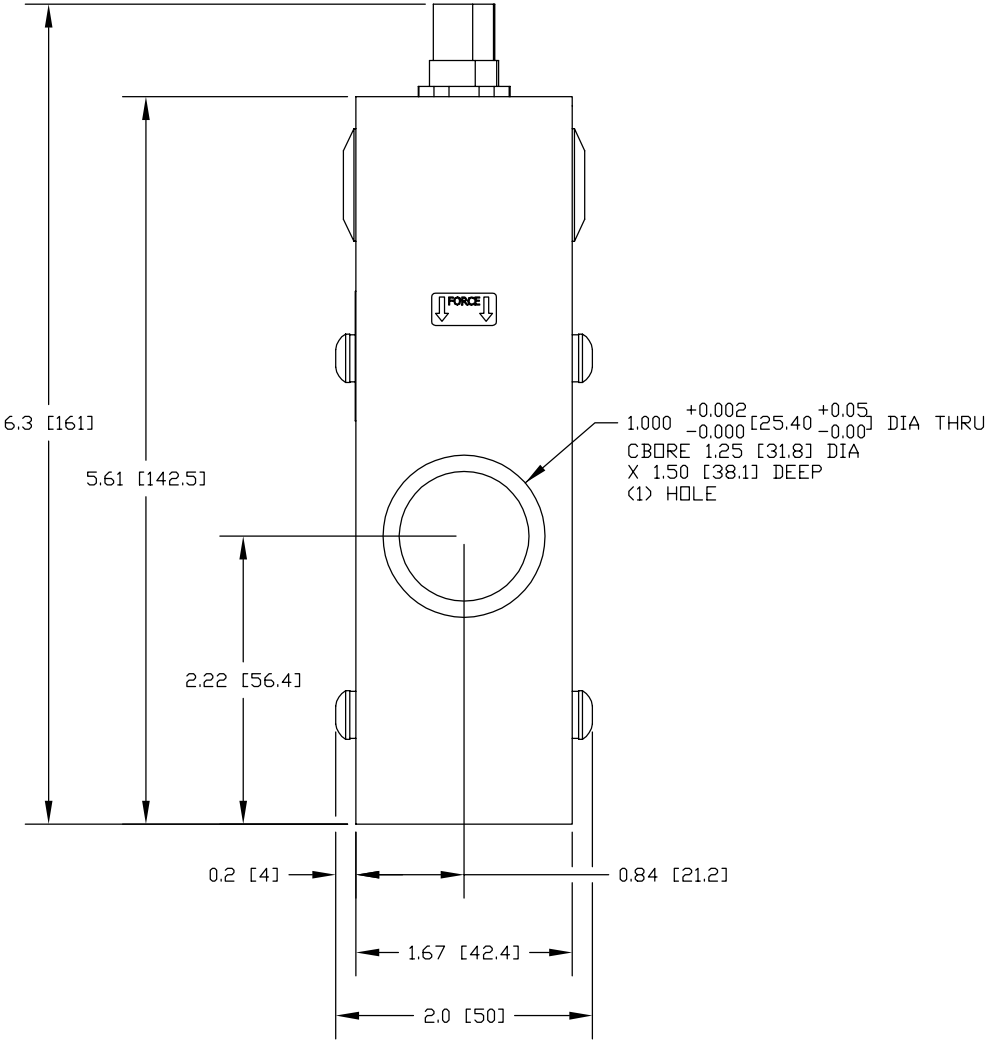
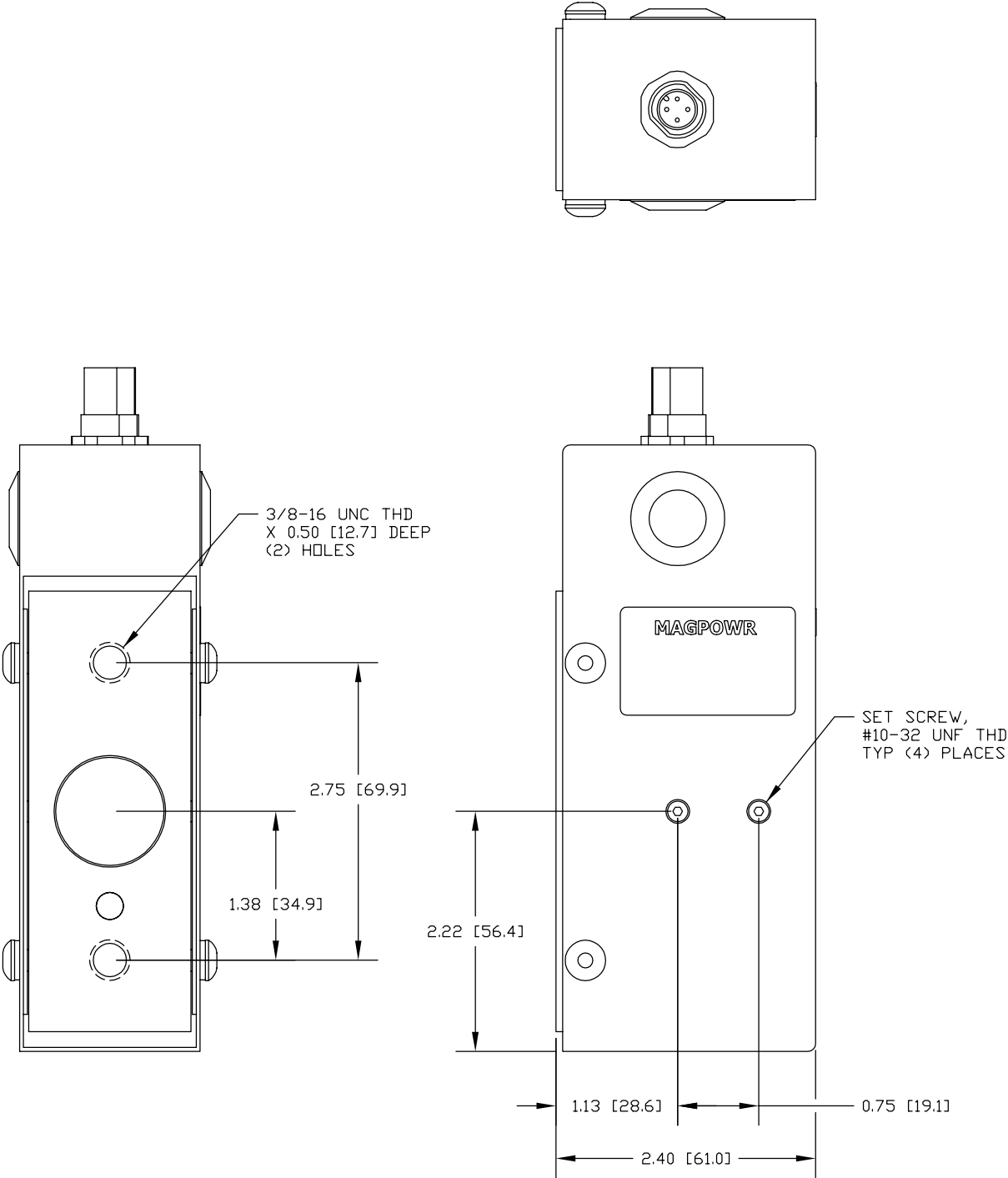


MAGPOWR INSTALLATION DRAWING
FOR FURTHER ASSISTANCE,
PLEASE CONTACT MAGPOWR AT
800-624-7697
WEB SITE: WWW.MAGPOWR.COM
E-MAIL: MAGPOWR@MAGPOWR.COM



		SYM		REVISION		BY DATE		APVD	
		BY		DATE		<div><div><div><div></div><div></div></div><div>THIRD ANGLE PROJECTION</div></div><div>DIMENSIONS ARE SHOWN IN INCHES (mm) UNLESS OTHERWISE NOTED</div></div> <div><div><div><div></div><div></div></div><div>TITLE</div></div><div>MAGPOWR OUTLINE DIMENSION DRAWING CANTILEVERED LOAD CELL MODEL CL2500-EC12S1 SIZE 2, 500 LB</div></div> <div><div><div><div></div><div></div></div><div>222 WEST MEMORIAL ROAD OKLAHOMA CITY, OK 73114 TEL: 405.755.1600 FAX: 405.755.8425 WWW.MAXCESSINTL.COM</div></div><div><div><div></div><div></div></div><div>MAXCESS</div></div></div>			
		DRAWN BP		03/02/15					
		CHECKED LZ		03/03/15					
		APPROVED LZ		03/03/15					
DRAWING REFERENCE		NUMBER							
TOLERANCES: UNLESS OTHERWISE SPECIFIED		This drawing is the property of FIFE CORPORATION. It is loaned with the understanding that it may not be reproduced nor may the information contained herein be used for the making of drawings or for manufacturing purposes without the written consent of FIFE CORPORATION. GEOMETRICAL SYMBOLS PER ANSI Y14.5M UNLESS OTHERWISE SPECIFIED							
INCHES X = ±.1 XX = ±.03 XXX = ±.010 FRACTIONS = STOCK SIZE		MM X = ±.25 .X = ±.8 .XX = ±.2							
SURFACE FINISH									
EXPOSED 250 AA		MACHINED 125 AA		STANDARD SHOP PRACTICES AND STANDARD SHOP RUN TOLERANCES PER DRAWING 40400		LOCATION OK		SCALE FULL	
DE-BURR ALL EDGES 0.020 [0.5] MAX								SIZE C	
						DRAWING NO. CL2500-EC12S1		SHEET NO. REV 1 OF 1	