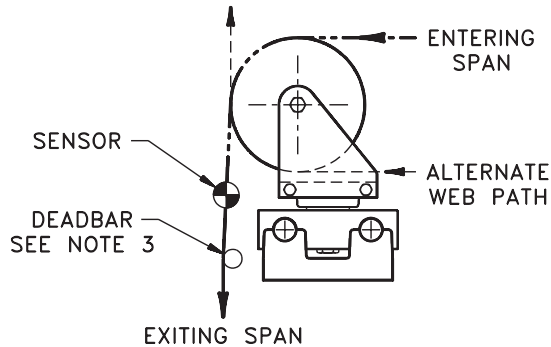




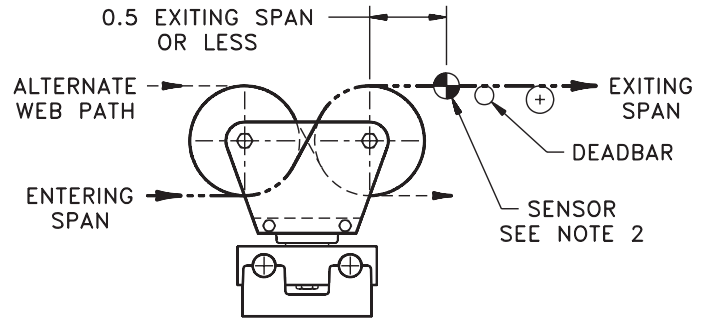
**FIFE CORPORATION**  
 Post Office Box 26508  
 Oklahoma City, Oklahoma 73126, U.S.A.  
 Phone: (405) 755-1600 Fax: (405) 755-8425  
 Telex: 747276

## INSTALLATION INSTRUCTIONS



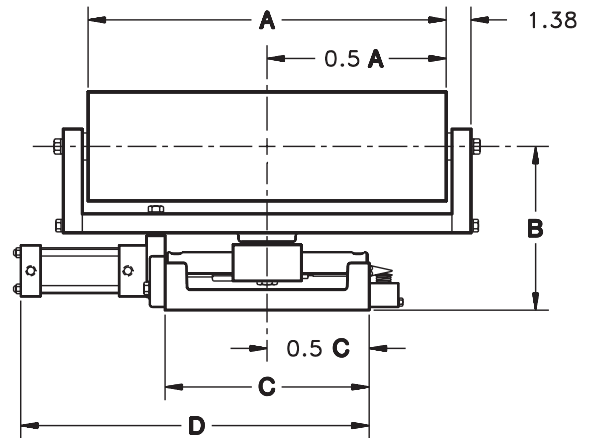
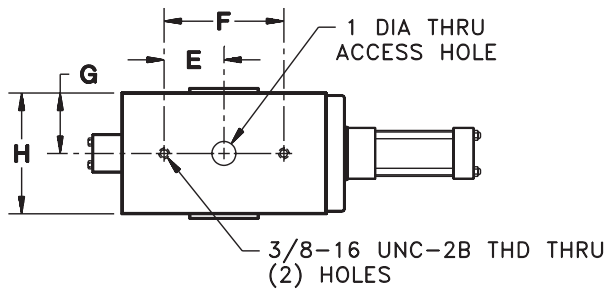
### SINGLE-ROLLER INSTALLATION

1. For satisfactory guiding results, a minimum of 27 inches is required in the free entering web span. The greater the error to be corrected, the greater the required free entering span must be. Also, stiff webs under high tension require long entering spans; flexible webs under low tension will require less. To insure stability at high web speeds, the entering span should not exceed 60 inches.



### DOUBLE-ROLLER INSTALLATION

2. Install the sensor downstream from the KANTIROLLER and as close to it as practical. The sensor should never be farther from the guide roll than 0.5 of the exiting span.
3. Where it is practical, a roller or a dead bar should be used to hold the plane of the exiting web constant and stabilize the web edge at the sensor.



RACEWAY MODEL	NUMBER OF ROLLERS	DIAMETER OF ROLLERS	A	B	C	D	E	F	G	H
KLB-R and -L	1	4	11	6.63	6.50	14.38	2	4	1.81	3.63
	2	2.25		5.75						
KA-R and -L	1	5	16	7.50	8.16	15.75	2.50	5	2.69	5.38
	2	3		6.50						

The hydraulic cylinder may be located on either end of the **KANTIROLLER**. Instructions to change the **KANTIROLLER** from right-hand assembly to left-hand assembly or vice-versa are given below.

The **KANTIROLLER** must be removed from its mounting bracket before performing the following steps.

1. Remove the roller or rollers and roller adapter brackets.
2. Remove the pivot plate and spindle bolt from the carrier block by moving the carrier block to the center of the raceway, removing the nut from the spindle bolt, and lifting the pivot plate and spindle bolt out of the carrier block.
3. Remove the roll pin from the pivot plate assembly and unscrew the spindle bolt.
4. Re-install the spindle bolt from the opposite side of the pivot plate.
5. Drill a 0.25 inch diameter hole through the pivot plate and the spindle bolt flange, using the existing hole in the pivot plate as a pilot hole. Re-install the roll pin.
6. Install the pivot plate and spindle bolt in the carrier block and install the nut on the spindle bolt.
7. Install the roller adapter brackets and the roller or rollers. On single-roll assemblies, be sure that the roller is offset toward the downstream side of the assembly.

