

PNEUMOHYDRAULIC POWER UNITS



Fife Pneumohydraulic Power Units are specifically designed to provide superior response and control with fully proportional corrective action. Power units are equipped with our exclusive four-way, spool-type servo valve to deliver unmatched sensitivity and stability in guiding applications for all types of materials, at any speed, under any load.

Completely self-contained, these Pneumohydraulic Power Units have a built-in regulated air system with a pump, filters, and regulator, as well as their own hydraulic reservoir, pump, filter and relief valve. External air is not required.

Pneumohydraulic power units can be supplied with one, two or three servo valves on a single power unit. One power unit simultaneously, yet independently, can handle up to three separate guiding operations.

For more than three guiding operations, a combination of power units may be used.



PRODUCT OPTIONS

All Fife power units are available with Servo-Center, Manual-Automatic and many other circuit system options

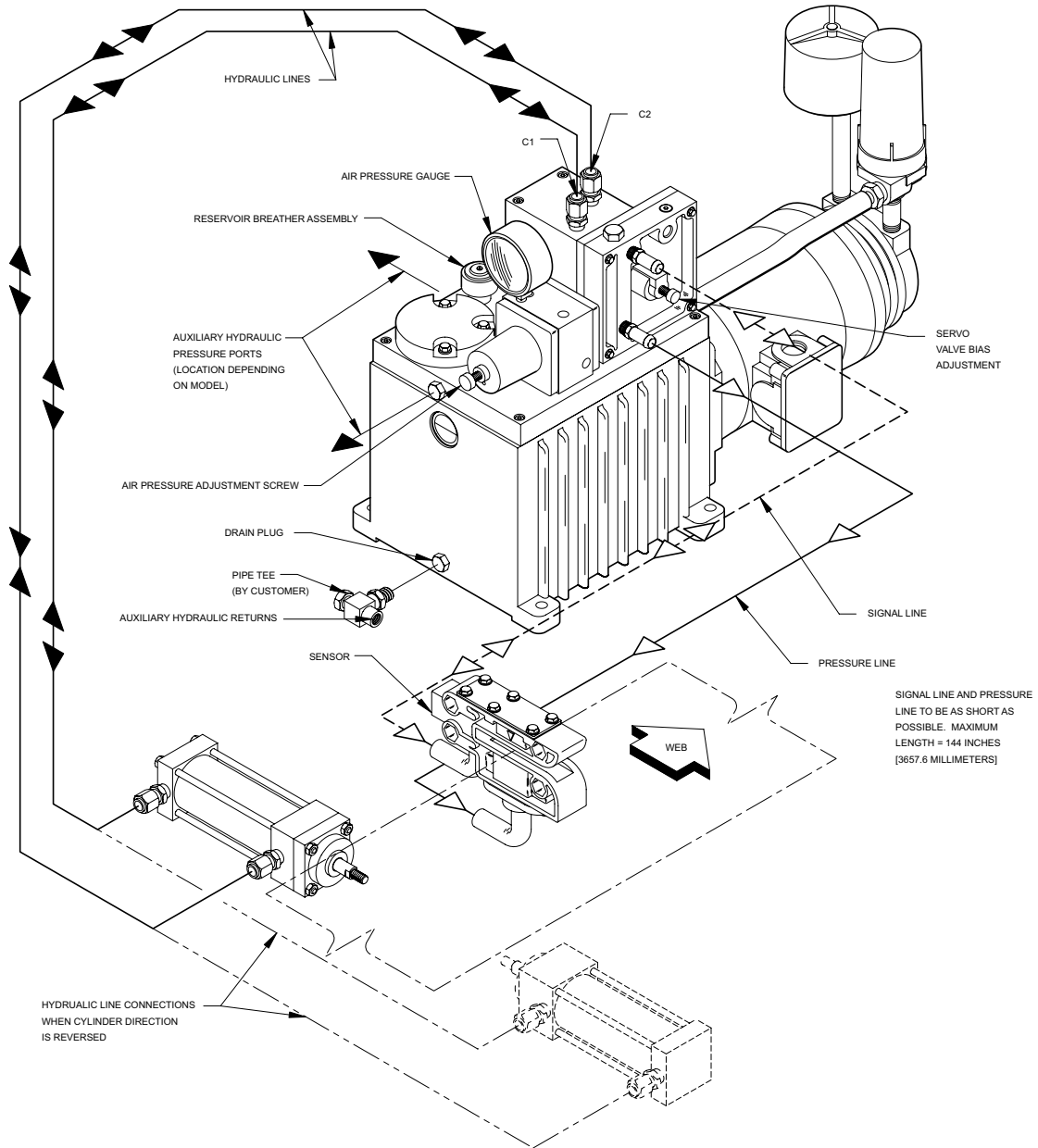
Floor or wall mounting brackets are available as requested

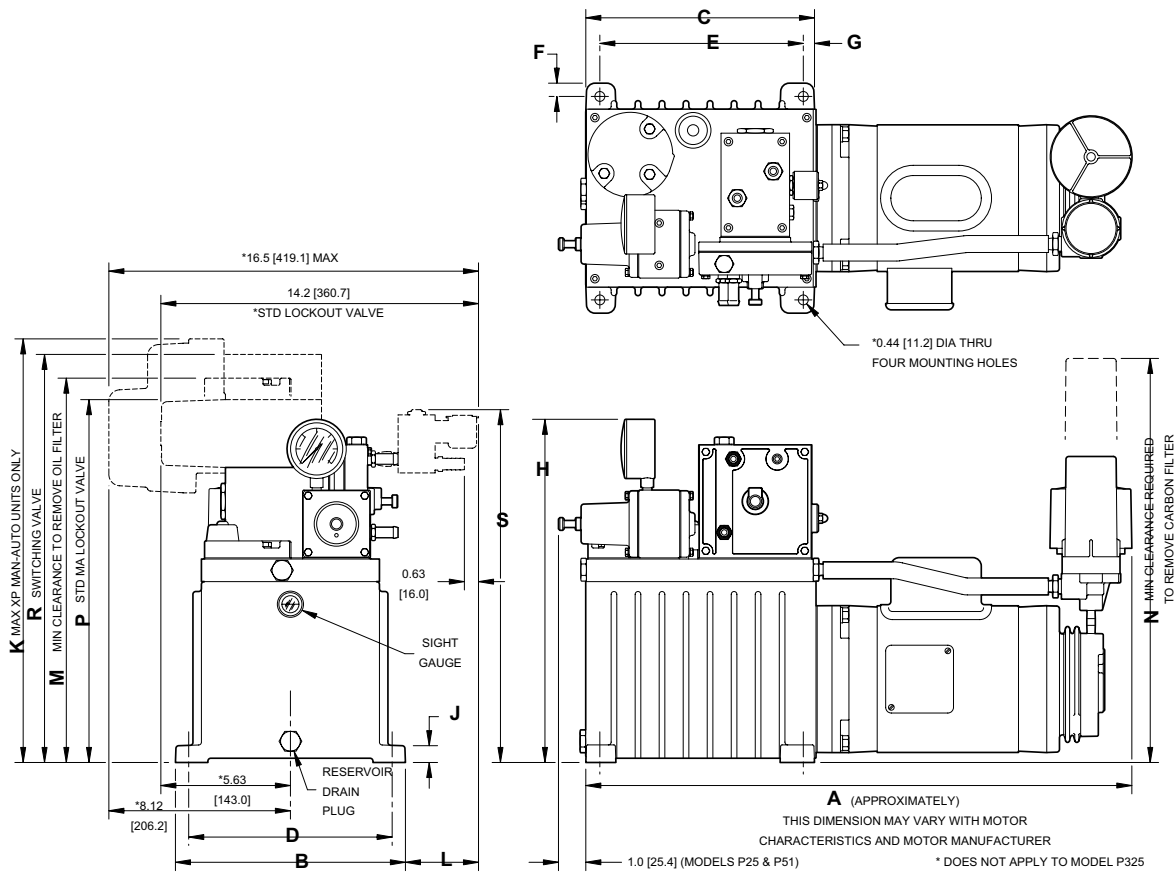
Heavy-duty and/or remote location air filters can be supplied

KEY FEATURES

- Provides superior response and control for any web guiding application
- Exclusive spool-type servo valve for unexcelled sensitivity and stability
- For use with Fife anti-clogging air sensors
- Adjustable air pressure system provides for sensitivity adjustment and is matched to the controller, sensor, and guide structure
- Compact, modular construction minimizes exterior tubing and provides maximum ease of servicing
- Totally enclosed, or explosion proof motors are both available
- Additional hydraulic ports are supplied on all units for use with optional Fife equipment

TYPICAL SINGLE POWER UNIT INSTALLATION





MODEL & NUMBER OF SERVO VALVES	A	B	C	D	E	F	G	H	J	K	L	M	N	P	R	S	APPROX GROSS WEIGHT
	MM	MM	MM	MM	MM	MM	MM	MM	MM	MM	MM	MM	MM	MM	MM	MM	KG
	INCH	INCH	INCH	INCH	INCH	INCH	INCH	INCH	INCH	INCH	INCH	INCH	INCH	INCH	INCH	INCH	LBS
P25-1	660	254	254	229	229	13	13	387	13	543	121	432	457	413	464	416	45
	26	10	10	9	9	0.5	0.5	15.25	0.5	21.38	4.75	17	18	16.25	18.25	16.38	100
P51-1	686	254	254	229	229	13	13	387	13	543	121	432	457	413	464	416	45
	27	10	10	9	9	0.5	0.5	15.25	0.5	21.38	4.75	17	18	16.25	18.25	16.38	100
P51S-1	686	254	254	229	229	13	13	387	13	543	N/A	432	457	413	464	416	50
	27	10	10	9	9	0.5	0.5	15.25	0.5	21.38		17	18	16.25	18.25	16.38	110
P50-1	813	318	375	286	348	16	14	419	19	568	83	457	483	438	489	457	73
	32	12.5	14.75	11.25	13.69	0.63	0.53	16.5	0.75	22.38	3.25	18	19	17.25	19.25	18	160
P50-2	813	318	375	286	348	16	14	419	19	568	83	457	483	438	489	441	77
	32	12.5	14.75	11.25	13.69	0.63	0.53	16.5	0.75	22.38	3.25	18	19	17.25	19.25	17.38	170
P50-3	914	318	514	286	483	16	16	419	19	568	83	457	483	438	489	441	82
	36	12.5	20.25	11.25	19	0.63	0.63	16.5	0.75	22.38	3.25	18	19	17.25	19.25	17.38	180
P50S-1	813	318	375	286	348	16	14	419	19	568	N/A	457	483	438	489	483	77
	32	12.5	14.75	11.25	13.69	0.63	0.53	16.5	0.75	22.38		18	19	17.25	19.25	19	170
P101-1	1016	318	514	286	483	16	16	419	19	568	83	457	483	438	489	441	91
	40	12.5	20.25	11.25	19	0.63	0.63	16.5	0.75	22.38	3.25	18	19	17.25	19.25	17.38	200
P101-2	1016	318	514	286	483	16	16	419	19	568	83	457	483	438	489	441	95
	40	12.5	20.25	11.25	19	0.63	0.63	16.5	0.75	22.38	3.25	18	19	17.25	19.25	17.38	210
P101S-1	1016	318	514	286	483	16	16	419	19	568	N/A	457	483	438	489	483	95
	40	12.5	20.25	11.25	19	0.63	0.63	16.5	0.75	22.38		18	19	17.25	19.25	19	210
P325-1	991	438	570	445	536	19	17	N/A	22	683	32	663	838	N/A	N/A	N/A	181
	39	19	22.43	17.5	21.12	0.75	0.66		0.88	26.88	1.25	26.12	33				400

PNEUMOHYDRAULIC POWER UNITS

SPECIFICATIONS

MODEL & NUMBER OF SERVO VALVES	AIR PUMP MODEL	AIR PUMP CAPACITY	MOTOR RATING	RESERVOIR CAPACITY	HYDRAULIC PUMP	OPERATING PRESSURE	PRESSURE AT CYLINDER	CYLINDER THRUST AND SPEED RELATIONS							
								51/SECOND (2/SECOND)		38/SECOND (1.5/SECOND)		25/SECOND (1/SECOND)		15/SECOND (0.06/SECOND)	
								BORE	THRUST	BORE	THRUST	BORE	THRUST	BORE	THRUST
								MM	N	MM	N	MM	N	MM	N
		M3/MIN	KW	LITERS	L/MIN	BAR	BAR	MM	N	MM	N	MM	N	MM	N
		CFM	HP	QUARTS	GPM	PSI	PSI	INCH	LBF	INCH	LBF	INCH	LBF	INCH	LBF
25-1	22	0.057	0.19	6.6	3	10.3	6.9	N/A	N/A	38	645	51	1268	64	2046
		2	0.25	7	0.8	150	100			1.5	145	2	285	2.5	460
P51-1	24	0.113	0.37	6.6	3	10.3	6.9	N/A	N/A	38	645	51	1268	64	2046
		4	0.5	7	0.8	150	100			1.5	145	2	285	2.5	460
P51S-1	26	0.17	0.37	6.6	3	10.3	6.9	N/A	N/A	38	1.5	51	1268	64	2046
		6	0.5	7	0.8	150	100			1.5	645	2	285	2.5	460
P50-1	22	0.057	0.37	13.3	6	17.2	11.4	51	2091	N/A	N/A	64	3381	83	5516
		2	0.5	14	1.6	250	165	2	470			2.5	760	3.25	1240
P50-1	24	0.113	0.37	13.3	6	17.2	7.9	51	1446	N/A	N/A	64	2358	83	3848
		4	0.5	14	1.6	250	115	2	325			2.5	530	3.25	865
P50-2	24	0.113	0.37	13.3	6	12.1	7.9	N/A	N/A	38	756	51	1446	64	2358
		4	0.5	14	1.6	175	115			1.5	170	2	325	2.5	530
P50-2	26	0.17	0.37	13.3	6	8.6	5.9	N/A	N/A	38	556	51	1068	64	1735
		6	0.5	14	1.6	125	85			1.5	125	2	240	2.5	390
P50-3	26	0.17	0.37	13.3	6	8.6	5.9	N/A	N/A	38	556	51	1068	64	1735
		6	0.5	14	1.6	125	85			1.5	125	2	240	2.5	390
P50S-1	26	0.17	0.37	13.3	6	8.6	5.9	51	1068	N/A	N/A	64	1735	83	2847
		6	0.5	14	1.6	125	85	2	240			2.5	390	3.25	640
P101-1	22	0.057	0.75	18.9	8.7	31	20.7	64	6139	N/A	N/A	83	10031	102	15725
		2	1	20	2.3	450	300	2.5	1380			3.25	2225	4	3535
P101-1	24	0.113	0.75	18.9	8.7	27.6	18.3	64	5427	N/A	N/A	83	8852	102	13879
		4	1	20	2.3	400	265	2.5	1220			3.25	1990	4	3120
P101-2	24	0.113	0.75	18.9	8.7	27.6	18.3	N/A	N/A	51	3336	64	5427	83	8852
		4	1	20	2.3	400	265			2	750	2.5	1220	3.25	1990
P101-2	26	0.17	0.75	18.9	8.7	24.1	16.2	N/A	N/A	51	2958	64	4804	83	7851
		6	1	20	2.3	350	235			2	665	2.5	1080	3.25	1765
P1-1S-1	26	0.17	0.75	18.9	8.7	24.1	16.2	64	4804	N/A	N/A	83	7851	102	12322
		6	1	20	2.3	350	235	2.5	1080			3.25	1765	4	2770
P325-1	22	0.057	2.24	56.8	12.5	86.2	57.6	N/A	N/A	83	25288	102	37743	127	61252
		2	3	60	3.3	1250	835			3.25	5685	4	8485	5	13770
P325-1	24	0.113	2.24	56.8	12.5	86.2	57.6	N/A	N/A	83	25288	102	37743	127	61252
		4	3	60	3.3	1250	835			3.25	5685	4	8485	5	13770



NORTH, CENTRAL AND SOUTH AMERICA
 Tel +1.405.755.1600
 Fax +1.405.755.8425
 sales@maxcessintl.com
 www.maxcessintl.com

INDIA

Tel +91.22.27602633
 Fax +91.22.27602634
 india@maxcessintl.com
 www.maxcess.in

EUROPE, MIDDLE EAST AND AFRICA
 Tel +49.6195.7002.0
 Fax +49.6195.7002.933
 sales@maxcess.eu
 www.maxcess.eu

JAPAN

Tel +81.43.421.1622
 Fax +81.43.421.2895
 japan@maxcessintl.com
 www.maxcess.jp

CHINA

Tel +86.756.881.9398
 Fax +86.756.881.9393
 info@maxcessintl.com.cn
 www.maxcessintl.com.cn

KOREA, TAIWAN AND SE ASIA

Tel +65.9620.3883
 Fax +65.6235.4818
 asia@maxcessintl.com