

Film Extrusion Specialist

Componex and WEBEX rolls, featuring Valley Roller roll coverings, are engineered to deliver reliable performance and long-lasting durability in the demanding environment of film manufacturing, with a wide range of innovative products that fit specific applications like coating, laminating or converting.

24/7 Service and Support for the Film Industry

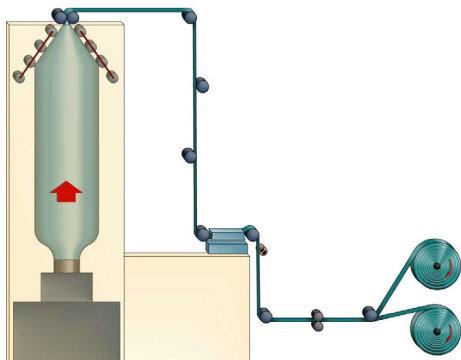
Uptime is everything—you need equipment that lasts. Maxcess delivers reliable solutions, with expert support just a call away. Do business with people you can trust to be there for you through thick and thin.

Maxcess Offers:

- American-Based Facilities
- Roll Disassembly and Inspection
- On-Site Service Technicians Ready When You Need Them

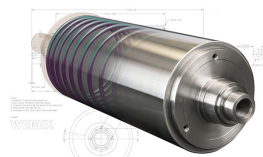
Learn More About Maxcess' Top Packaging Solutions

Maxcess helps film extrusion facilities run better, faster, and smarter by providing advanced roll solutions designed to optimize performance. Choose from Valley Roller's extensive catalog of coatings known for their outstanding resilience, heat stability, and wear characteristics. You deserve the best roll covers to extend maintenance periods and regrinds.



Componex Reverse Crown Rolls

- Eliminates Air Entrainment – Prevents air pockets for improved web quality.
- Reduces Wrinkles – Reverse Crown Spreader design minimizes waste and enhances material handling.
- Ensures Reliable Performance – Delivers smooth, consistent operation for maximum efficiency.



WEBEX Heat Transfer Roll

- Precise Control – Maintains uniform temp.
- Durable Design – Built for long service life.

Supporting Products

Maxcess understands how each stage of film processing impacts the next, underlining the importance of high quality equipment that you can rely on. Maxcess provides complementing products that work better together to increase productivity and help eliminate errors in the film industry.



Fife DSE-45

Controlling web width variation, working in harsh environments, and guiding multiple webs is easy with the DSE-45. The sensor requires no repositioning with web width changes. It's able to track up to 16 web edges or 8 webs, reducing the number of sensors needed.



Fife SmartDrive Actuator

The SmartDrive Actuator enables precise control of die gap, nip roll pressure, and cooling systems, ensuring consistent film thickness and quality. Its intelligent feedback and adaptive motion capabilities help reduce waste, improve efficiency, and minimize downtime.



Tidland Force5 Lightweight Air Chucks

The Tidland RD Scorer is engineered for accurate and repeatable score cuts, even on paper, film, and other challenging materials. Its durable design and quick-change blade holder make it ideal for high-efficiency slitting operations.



MAGPOWR TS Load Cells

Built for both live and dead shafts, these rugged load cells offer exceptional accuracy and versatile mounting options, all in a compact design that fits easily within machine frames.



Componex & WEBEX Plasma Spray Coatings

Componex and WEBEX plasma spray coatings provide exceptional wear resistance and a consistent coefficient of friction, preventing material damage, slippage, adhesive buildup, or air entrapment during high-speed web transport.