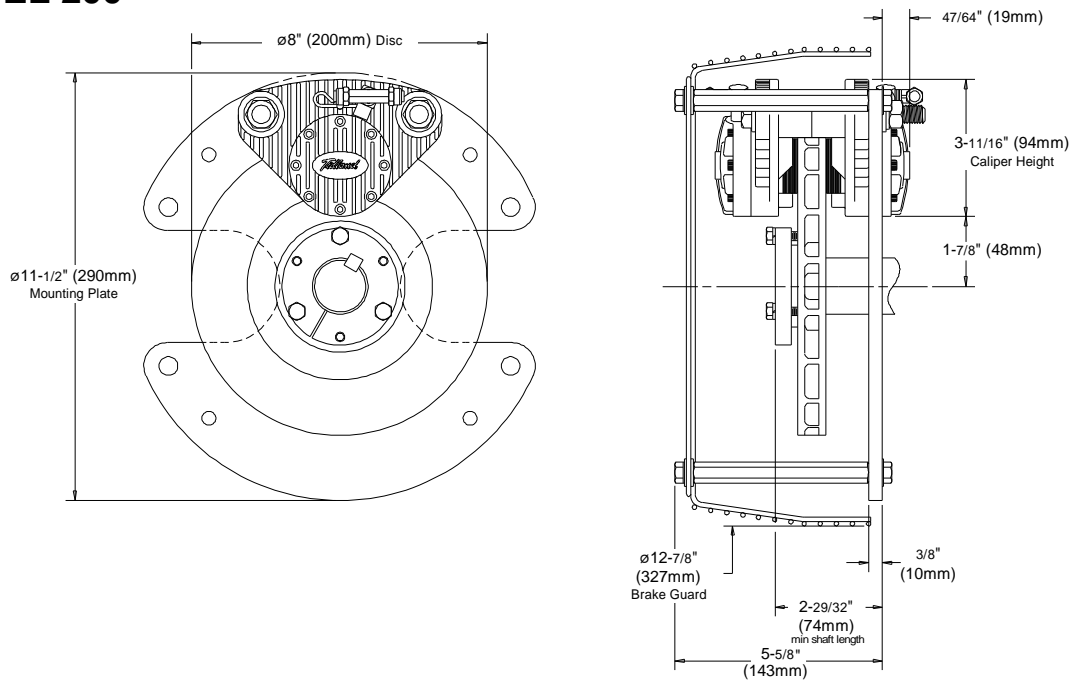


MODEL 200



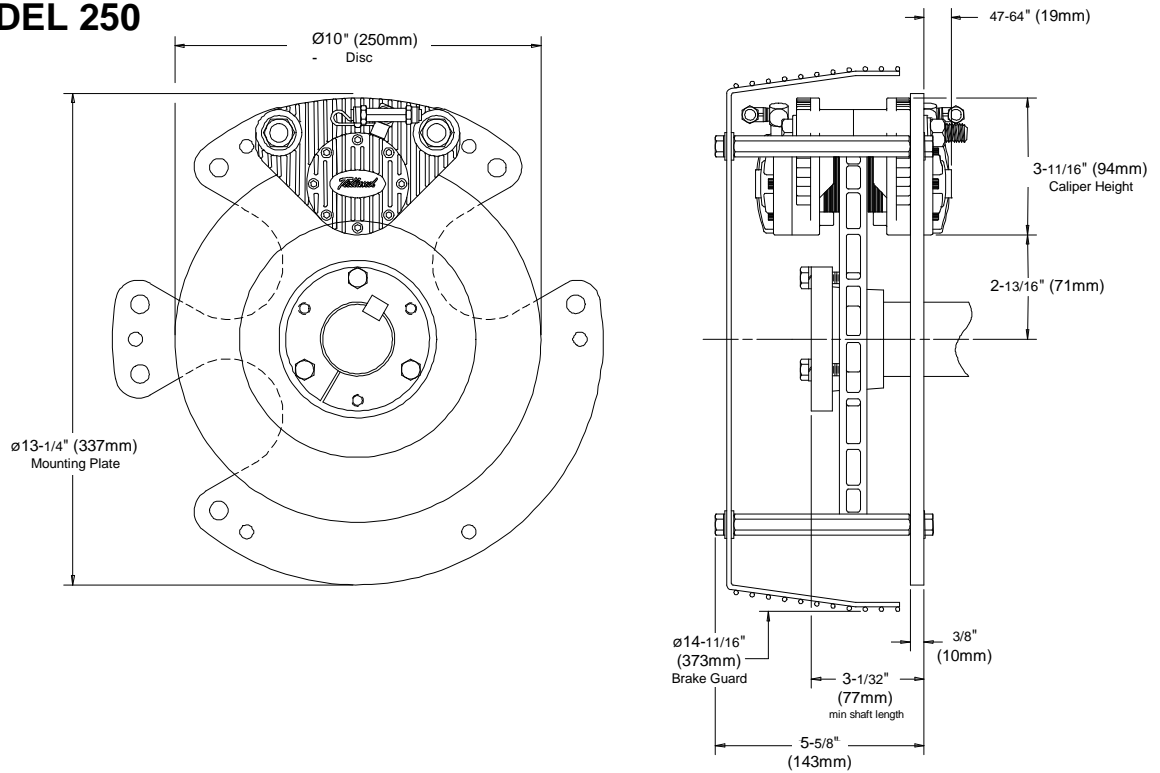
STANDARD—8" (200mm) Disc

| Brake Model | TORQUE (Pad Coefficient: 0.38) | | Max RPM | Continuous Heat Dissipation |
|-------------|-----------------------------------|----------------------|---------|-----------------------------|
| | 75psi (5.2 bar) | 0.5psi (0.04 bar) | | |
| 200-1-1 | 477 in-lb. (54 N·m) | 3.2 in-lb. (0.4 N·m) | 4700 | 1 HP (0.8 kW) |
| 200-1-2 | 954 in-lb. (108 N·m) | | | 1 HP (0.8 kW) |
| 200-1-3 | 1431 in-lb. (162 N·m) | | | 1 HP (0.8 kW) |
| 200-2-2 | 954 in-lb. (108 N·m) | | | 2 HP (1.5 kW) |
| 200-2-4 | 1908 in-lb. (216 N·m) | | | 2 HP (1.5 kW) |
| 200-2-6 | 2862 in-lb. (323 N·m) | | | 2 HP (1.5 kW) |
| 200-3-3 | 1431 in-lb. (162 N·m) | | | 3 HP (2.2 kW) |
| 200-3-6 | 2862 in-lb. (323 N·m) | | | 3 HP (2.2 kW) |
| 200-3-9 | 4293 in-lb. (485 N·m) | | | 3 HP (2.2 kW) |

OPTIONAL—8" (200mm) Disc

| Brake Model | TORQUE (Pad Coefficient: 0.12) | | Max RPM | Continuous Heat Dissipation |
|-------------|-----------------------------------|--------------------|---------|-----------------------------|
| | 75psi (5.2 bar) | 0.5psi (0.04 bar) | | |
| 200-1-1 | 150 in-lb. (17 N·m) | 1 in-lb. (0.1 N·m) | 4700 | 1 HP (0.8 kW) |
| 200-1-2 | 300 in-lb. (34 N·m) | | | 1 HP (0.8 kW) |
| 200-1-3 | 450 in-lb. (51 N·m) | | | 1 HP (0.8 kW) |
| 200-2-2 | 300 in-lb. (34 N·m) | | | 2 HP (1.5 kW) |
| 200-2-4 | 600 in-lb. (68 N·m) | | | 2 HP (1.5 kW) |
| 200-2-6 | 900 in-lb. (102 N·m) | | | 2 HP (1.5 kW) |
| 200-3-3 | 450 in-lb. (51 N·m) | | | 3 HP (2.2 kW) |
| 200-3-6 | 900 in-lb. (102 N·m) | | | 3 HP (2.2 kW) |
| 200-3-9 | 1350 in-lb. (153 N·m) | | | 3 HP (2.2 kW) |

MODEL 250



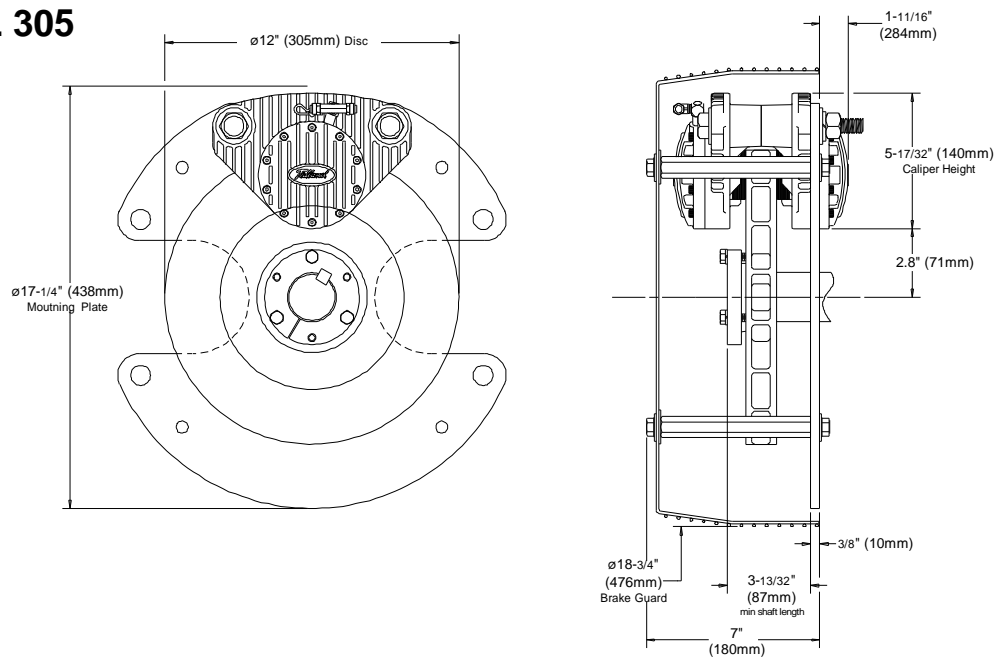
STANDARD—10" (250mm) Disc

| Brake Model | TORQUE (Pad Coefficient: 0.38) | | Max RPM | Continuous Heat Dissipation |
|-------------|-----------------------------------|----------------------|---------|-----------------------------|
| | 75psi (5.2 bar) | 0.5psi (0.04 bar) | | |
| 250-1-1 | 615 in-lb. (70 N·m) | 4.2 in-lb. (0.7 N·m) | 3800 | 2 HP (1.5 kW) |
| 250-1-2 | 1230 in-lb. (139 N·m) | | | 2 HP (1.5 kW) |
| 250-1-3 | 1845 in-lb. (209 N·m) | | | 2 HP (1.5 kW) |
| 250-1-4 | 2460 in-lb. (278 N·m) | | | 2 HP (1.5 kW) |
| 250-2-2 | 1230 in-lb. (139 N·m) | | | 4 HP (3 kW) |
| 250-2-4 | 2460 in-lb. (278 N·m) | | | 4 HP (3 kW) |
| 250-2-6 | 3690 in-lb. (417 N·m) | | | 4 HP (3 kW) |
| 250-2-8 | 4920 in-lb. (556 N·m) | | | 4 HP (3 kW) |

OPTIONAL—10" (250mm) Disc

| Brake Model | TORQUE (Pad Coefficient: 0.12) | | Max RPM | Continuous Heat Dissipation |
|-------------|-----------------------------------|----------------------|---------|-----------------------------|
| | 75psi (5.2 bar) | 0.5psi (0.04 bar) | | |
| 250-1-1 | 197 in-lb. (22 N·m) | 1.3 in-lb. (0.2 N·m) | 3800 | 2 HP (1.5 kW) |
| 250-1-2 | 394 in-lb. (45 N·m) | | | 2 HP (1.5 kW) |
| 250-1-3 | 591 in-lb. (67 N·m) | | | 2 HP (1.5 kW) |
| 250-1-4 | 788 in-lb. (89 N·m) | | | 2 HP (1.5 kW) |
| 250-2-2 | 394 in-lb. (45 N·m) | | | 4 HP (3 kW) |
| 250-2-4 | 591 in-lb. (89 N·m) | | | 4 HP (3 kW) |
| 250-2-6 | 1182 in-lb. (134 N·m) | | | 4 HP (3 kW) |
| 250-2-8 | 1576 in-lb. (178 N·m) | | | 4 HP (3 kW) |

MODEL 305



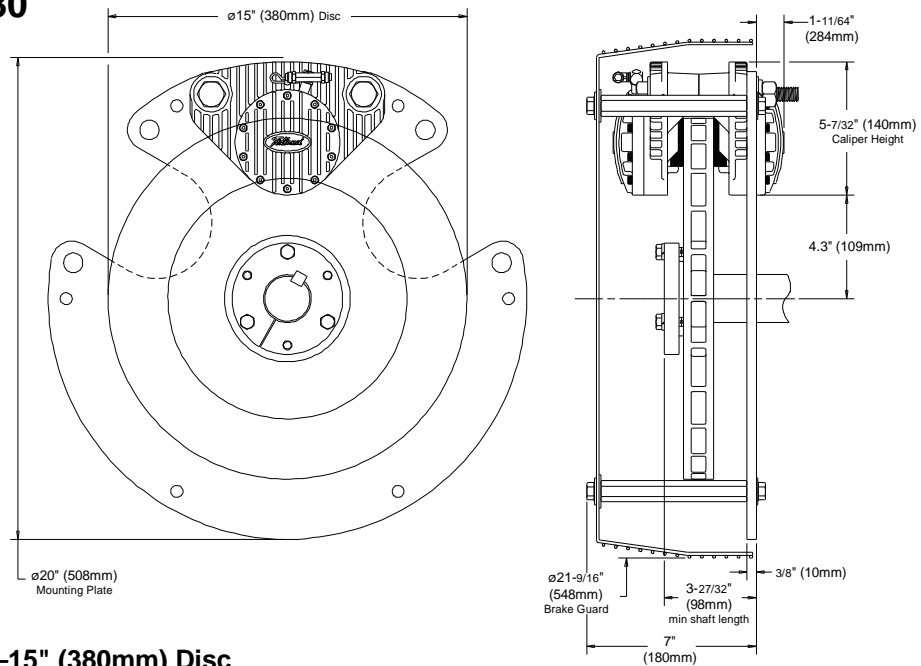
STANDARD—12" (305mm) Disc

| Brake Model | TORQUE (Pad Coefficient: 0.38) | | Max RPM | Continuous Heat Dissipation |
|-------------|-----------------------------------|------------------------|---------|-----------------------------|
| | 75psi (5.2 bar) | 0.5psi (0.04 bar) | | |
| 305-1-1 | 2274 in-lb. (257 N·m) | 15 in-lb. (1.7 N·m) | 3000 | 3 HP (2.2 kW) |
| 305-1-2 | 4548 in-lb. (514 N·m) | | | 3 HP (2.2 kW) |
| 305-1-3 | 6822 in-lb. (771 N·m) | | | 3 HP (2.2 kW) |
| 305-2-2 | 4548 in-lb. (514 N·m) | | | 6 HP (4.5 kW) |
| 305-2-4 | 9096 in-lb. (1028 N·m) | | | 6 HP (4.5 kW) |
| 305-2-6 | 13644 in-lb. (1542 N·m) | | | 6 HP (4.5 kW) |
| 305-3-3 | 6822 in-lb. (771 N·m) | | | 9 HP (6.7 kW) |
| 305-3-6 | 13644 in-lb. (1542 N·m) | | | 9 HP (6.7 kW) |
| 305-3-9 | 20466 in-lb. (2312 N·m) | | | 9 HP (6.7 kW) |

OPTIONAL—12" (305mm) Disc

| Brake Model | TORQUE (Pad Coefficient: 0.12) | | Max RPM | Continuous Heat Dissipation |
|-------------|-----------------------------------|-----------------------|---------|-----------------------------|
| | 75psi (5.2 bar) | 0.5psi (0.04 bar) | | |
| 305-1-1 | 715 in-lb. (81 N·m) | 4 in-lb. (0.5 N·m) | 3000 | 3 HP (2.2 kW) |
| 305-1-2 | 1430 in-lb. (162 N·m) | | | 3 HP (2.2 kW) |
| 305-1-3 | 2145 in-lb. (242 N·m) | | | 3 HP (2.2 kW) |
| 305-2-2 | 1430 in-lb. (162 N·m) | | | 6 HP (4.5 kW) |
| 305-2-4 | 2860 in-lb. (323 N·m) | | | 6 HP (4.5 kW) |
| 305-2-6 | 4290 in-lb. (485 N·m) | | | 6 HP (4.5 kW) |
| 305-3-3 | 2145 in-lb. (242 N·m) | | | 9 HP (6.7 kW) |
| 305-3-6 | 4290 in-lb. (485 N·m) | | | 9 HP (6.7 kW) |
| 305-3-9 | 6435 in-lb. (727 N·m) | | | 9 HP (6.7 kW) |

MODEL 380



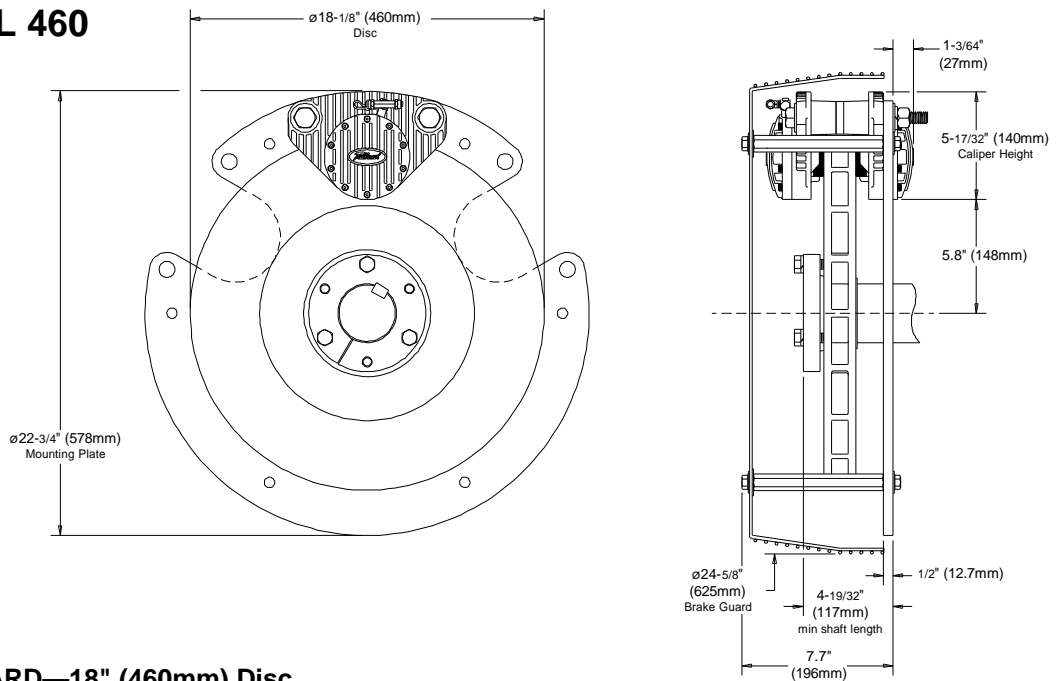
STANDARD—15" (380mm) Disc

| Brake Model | TORQUE (Pad Coefficient: 0.38) | | Max RPM | Continuous Heat Dissipation |
|-------------|-----------------------------------|------------------------|---------|-----------------------------|
| | 75psi (5.2 bar) | 0.5psi (0.04 bar) | | |
| 380-1-1 | 2956 in-lb. (334 N·m) | 19 in-lb. (2.2 N·m) | 2500 | 5 HP (3.7 kW) |
| 380-1-2 | 5912 in-lb. (668 N·m) | | | 5 HP (3.7 kW) |
| 380-1-3 | 8868 in-lb. (1002 N·m) | | | 5 HP (3.7 kW) |
| 380-2-2 | 5912 in-lb. (668 N·m) | | | 10 HP (7.5 kW) |
| 380-2-4 | 11824 in-lb. (1336 N·m) | | | 10 HP (7.5 kW) |
| 380-2-6 | 17736 in-lb. (2004 N·m) | | | 10 HP (7.5 kW) |
| 380-3-3 | 8868 in-lb. (1002 N·m) | | | 15 HP (11.2 kW) |
| 380-3-6 | 17736 in-lb. (2004 N·m) | | | 15 HP (11.2 kW) |
| 380-3-9 | 26604 in-lb. (3006 N·m) | | | 15 HP (11.2 kW) |

OPTIONAL—15" (380mm) Disc

| Brake Model | TORQUE (Pad Coefficient: 0.12) | | Max RPM | Continuous Heat Dissipation |
|-------------|-----------------------------------|-----------------------|---------|-----------------------------|
| | 75psi (5.2 bar) | 0.5psi (0.04 bar) | | |
| 380-1-1 | 930 in-lb. (105 N·m) | 6 in-lb. (0.7 N·m) | 2500 | 5 HP (3.7 kW) |
| 380-1-2 | 1860 in-lb. (210 N·m) | | | 5 HP (3.7 kW) |
| 380-1-3 | 2790 in-lb. (315 N·m) | | | 5 HP (3.7 kW) |
| 380-2-2 | 1860 in-lb. (210 N·m) | | | 10 HP (7.5 kW) |
| 380-2-4 | 3720 in-lb. (420 N·m) | | | 10 HP (7.5 kW) |
| 380-2-6 | 5580 in-lb. (630 N·m) | | | 10 HP (7.5 kW) |
| 380-3-3 | 2790 in-lb. (315 N·m) | | | 15 HP (11.2 kW) |
| 380-3-6 | 5580 in-lb. (630 N·m) | | | 15 HP (11.2 kW) |
| 380-3-9 | 8370 in-lb. (946 N·m) | | | 15 HP (11.2 kW) |

MODEL 460



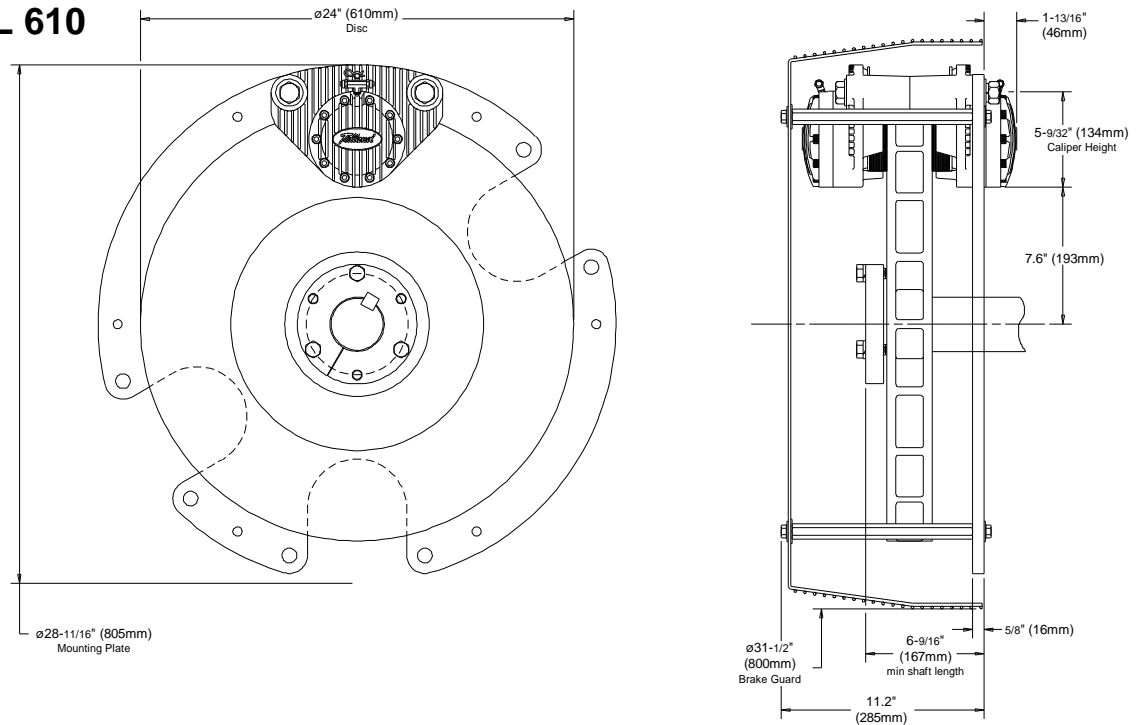
STANDARD—18" (460mm) Disc

| Brake Model | TORQUE (Pad Coefficient: 0.38) | | Max RPM | Continuous Heat Dissipation |
|-------------|-----------------------------------|--------------------------|---------|-----------------------------|
| | 75psi (5.2 bar) | 0.5psi (0.04 bar) | | |
| 460-1-1 | 3638 in-lb. (411 N·m) | 24.3 in-lb. (3.9 N·m) | 2100 | 8 HP (6 kW) |
| 460-1-2 | 7277 in-lb. (822 N·m) | | | 8 HP (6 kW) |
| 460-1-3 | 10914 in-lb. (1233 N·m) | | | 8 HP (6 kW) |
| 460-2-2 | 7277 in-lb. (822 N·m) | | | 16 HP (12 kW) |
| 460-2-4 | 14552 in-lb. (1644 N·m) | | | 16 HP (12 kW) |
| 460-2-6 | 21828 in-lb. (2466 N·m) | | | 16 HP (12 kW) |
| 460-3-3 | 10914 in-lb. (1233 N·m) | | | 24 HP (18 kW) |
| 460-3-6 | 21828 in-lb. (2466 N·m) | | | 24 HP (18 kW) |
| 460-3-9 | 32742 in-lb. (3699 N·m) | | | 24 HP (18 kW) |

OPTIONAL—18" (460mm) Disc

| Brake Model | TORQUE (Pad Coefficient: 0.12) | | Max RPM | Continuous Heat Dissipation |
|-------------|-----------------------------------|-------------------------|---------|-----------------------------|
| | 75psi (5.2 bar) | 0.5psi (0.04 bar) | | |
| 460-1-1 | 1149 in-lb. (130 N·m) | 7.7 in-lb. (1.3 N·m) | 2100 | 8 HP (6 kW) |
| 460-1-2 | 2298 in-lb. (260 N·m) | | | 8 HP (6 kW) |
| 460-1-3 | 3447 in-lb. (390 N·m) | | | 8 HP (6 kW) |
| 460-2-2 | 2298 in-lb. (260 N·m) | | | 16 HP (12 kW) |
| 460-2-4 | 4596 in-lb. (520 N·m) | | | 16 HP (12 kW) |
| 460-2-6 | 6894 in-lb. (780 N·m) | | | 16 HP (12 kW) |
| 460-3-3 | 3447 in-lb. (390 N·m) | | | 24 HP (18 kW) |
| 460-3-6 | 6894 in-lb. (780 N·m) | | | 24 HP (18 kW) |
| 460-3-9 | 10341 in-lb. (1170 N·m) | | | 24 HP (18 kW) |

MODEL 610



STANDARD—24" (610mm) Disc

| Brake Model | TORQUE (Pad Coefficient: 0.38) | | Max RPM | Continuous Heat Dissipation |
|-------------|-----------------------------------|---------------------|---------|-----------------------------|
| | 75psi (5.2 bar) | 0.5psi (0.04 bar) | | |
| 610-1-1 | 5925 in-lb. (670 N·m) | 39 in-lb. (4 N·m) | 1550 | 16 HP (12 kW) |
| 610-1-2 | 11850 in-lb. (1339 N·m) | 79 in-lb. (9 N·m) | | 16 HP (12 kW) |
| 610-1-3 | 17775 in-lb. (2008 N·m) | 118 in-lb. (13 N·m) | | 16 HP (12 kW) |
| 610-1-4 | 23700 in-lb. (2678 N·m) | 158 in-lb. (18 N·m) | | 16 HP (12 kW) |
| 610-2-2 | 11850 in-lb. (1339 N·m) | 79 in-lb. (9 N·m) | | 16 HP (12 kW) |
| 610-2-4 | 23700 in-lb. (2678 N·m) | 158 in-lb. (18 N·m) | | 32 HP (24 kW) |
| 610-2-6 | 35530 in-lb. (4014 N·m) | 236 in-lb. (27 N·m) | | 32 HP (24 kW) |
| 610-2-8 | 47400 in-lb. (5356 N·m) | 316 in-lb. (36 N·m) | | 32 HP (24 kW) |

OPTIONAL—24" (610mm) Disc

| Brake Model | TORQUE (Pad Coefficient: 0.12) | | Max RPM | Continuous Heat Dissipation |
|-------------|-----------------------------------|---------------------|---------|-----------------------------|
| | 75psi (5.2 bar) | 0.5psi (0.04 bar) | | |
| 610-1-1 | 1875 in-lb. (212 N·m) | 12 in-lb. (1 N·m) | 1550 | 16 HP (12 kW) |
| 610-1-2 | 3750 in-lb. (424 N·m) | 25 in-lb. (3 N·m) | | 16 HP (12 kW) |
| 610-1-3 | 5625 in-lb. (636 N·m) | 37 in-lb. (4 N·m) | | 16 HP (12 kW) |
| 610-1-4 | 7500 in-lb. (847 N·m) | 50 in-lb. (6 N·m) | | 16 HP (12 kW) |
| 610-2-2 | 3750 in-lb. (424 N·m) | 25 in-lb. (3 N·m) | | 16 HP (12 kW) |
| 610-2-4 | 7500 in-lb. (847 N·m) | 50 in-lb. (6 N·m) | | 32 HP (24 kW) |
| 610-2-6 | 11250 in-lb. (1271 N·m) | 74 in-lb. (8 N·m) | | 32 HP (24 kW) |
| 610-2-8 | 15000 in-lb. (1695 N·m) | 100 in-lb. (11 N·m) | | 32 HP (24 kW) |