



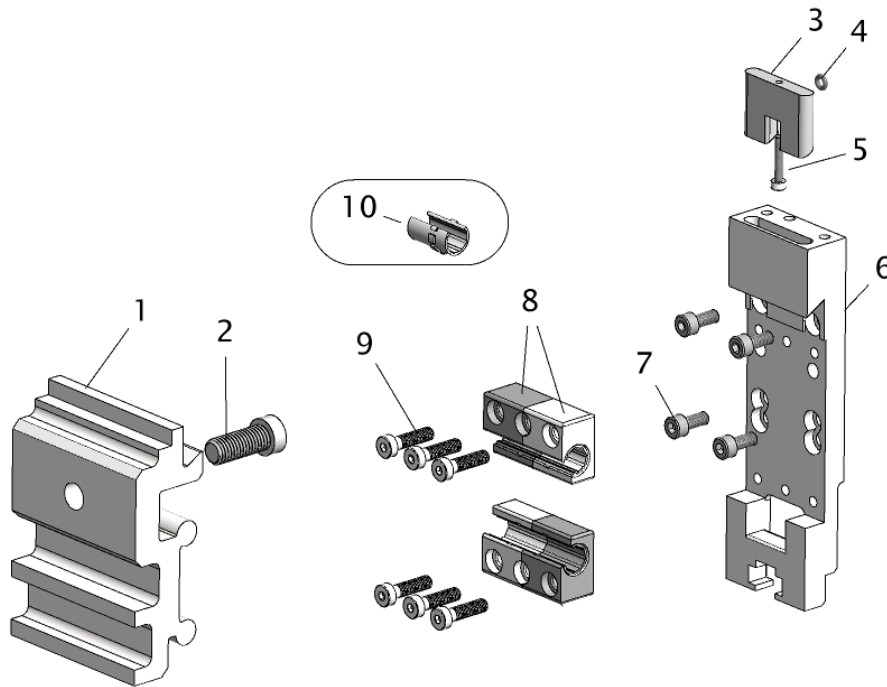
Follow all company safety procedures when working with knifeholders.

Blades are sharp – may cause bodily harm.

Wear protective gear or use tools when removing and handling blades.

## Interchangeable parts

The Tidland DuraGlide bearing mount system is interchangeable with the standard guide bar setup used with Tidland knifeholders. The DuraGlide guide bar is typically pre-drilled and cut to length to match your existing system. Parts supplied for a retrofit include:



Item	Description	Class II		Class III	
1	Guide bar extrusion	270020956	1	270020956	1
2	Soc hd, low head 3/8-16	270023032	a/r	270023032	a/r
<b>Kit Part Numbers</b>		<b>270022471</b>		<b>270022476</b>	
3	Brake shoe	27L531758	1	27L531758	1
4	O-ring (Parker 2-006)	27L130136	1	27L130136	1
5	Screw, brake shoe adjustment	27L598977	1	27L598977	1
6	Backplate	270022398	1	270022407	1
7	Soc hd cpscr	M5 x 12 mm	27L130467	4	-
		M6 x 12 mm	-	-	27L250116
8	Bearing*	270022463	2	270020869	4
		270022462	2	-	-
9	Soc hd, low head M5 x 20 mm	270022475	6	270022475	8
10	Bearing liners (replaceable)	270024599	-	270023370	-

\* Class II bearing is made up of two part numbers, sold only as a set.

## Install guide bar on support beam

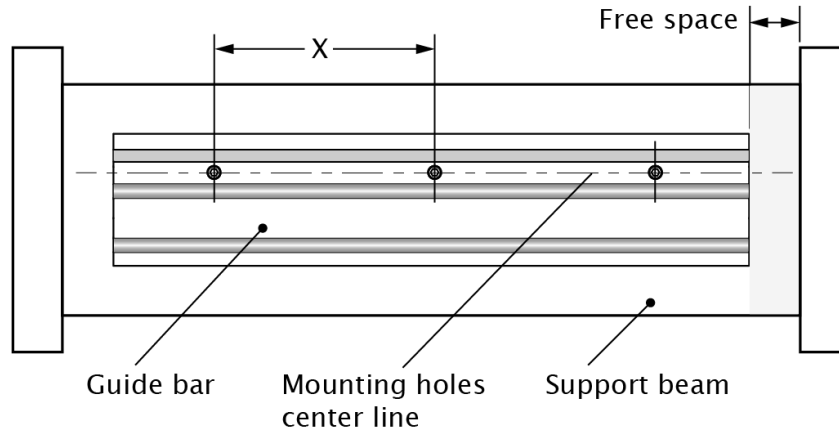
---



The guide bar must be straight within 0.010" (0.25 mm) on a rigid and vibration-free support.

Avoid scratches or dents to the guide bar during installation.

---



### Existing installation

Remove your guide bar and replace with the DuraGlide guide bar.

Use the low-head socket head cap screws provided with your retrofit kit.

### New installation

1. Recommended free space — Class II: 3" (76.2 mm)  
Class III: 4" (101.6 mm)
2. Determine the center-to-center distance between the mounting bolt holes (**X**) on the guide bar. Standard pre-drilled dimension is 12" (304.8 mm).
3. Drill and tap support beam for standard pre-drilled guide bar: 3/8"-16NC holes.\*
4. Use only low-head socket head bolts to mount guide bar.

\* Unless using non-standard bolts.

---

### If bearings bind on the guide bar

Knifemaker movement should be smooth along the length of the guide bar. If the bearings drag or catch, check the guide bar for debris and wipe it clean. Use a light coating of dry silicone lubricant spray; let dry and wipe off.

Serious binding indicates:

- possible damage to the guide bar
  - the guide bar may not have been installed per the specifications above
- 

### Maintenance

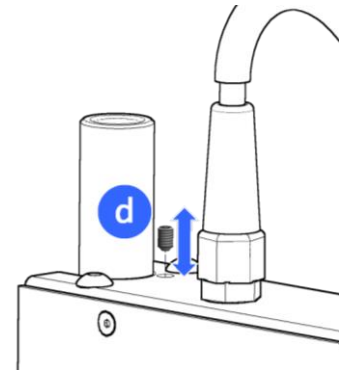
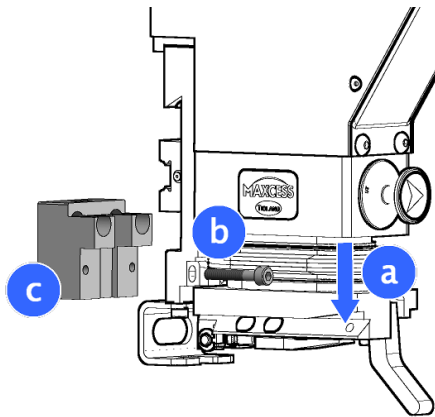
The bearing liners act as wipers and help to keep the guide bar clean. Check for build-up on the guide bar at regular intervals, which will vary depending on your slitting environment.

Lubricate the guide bar periodically with a silicone dry film lubricant. Tidland recommends using *Dow Corning 557 Silicone Dry Film Lubrication* to assure smoother knifemaker movement. Follow the manufacturer's instructions for use.

---

# Remove the existing guide bar mount assembly from the knifeholder

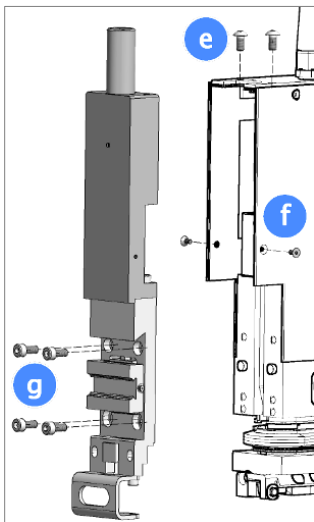
Gib or *EasyGlider* mount



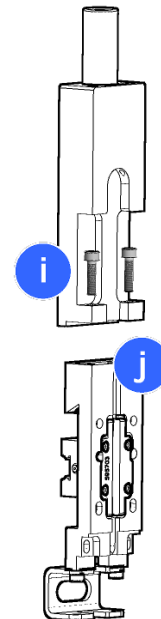
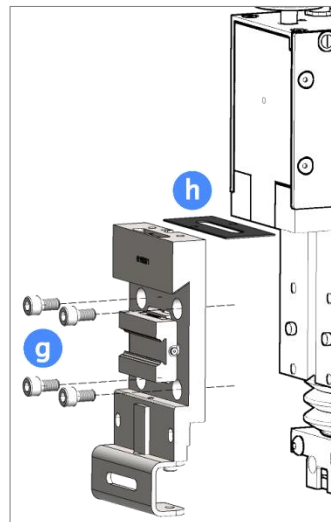
1. Extend the cartridge dovetail (a) to access two screws (b) that secure item (c) **gib** or **stop block**, depending on your mount type.

2. Check setscrew (d); either remove it or screw it down into the top block. It is not used with the DuraGlide.

## Class II



## Class III



3. **Class II:** Remove eight screws total (e, f, g) to detach mount assembly from the knifeholder. Keep screws for re-use.

**Class III:** Remove screws (g). Your electronic knifeholder may have a gasket (h), which you will need to save and reinstall.

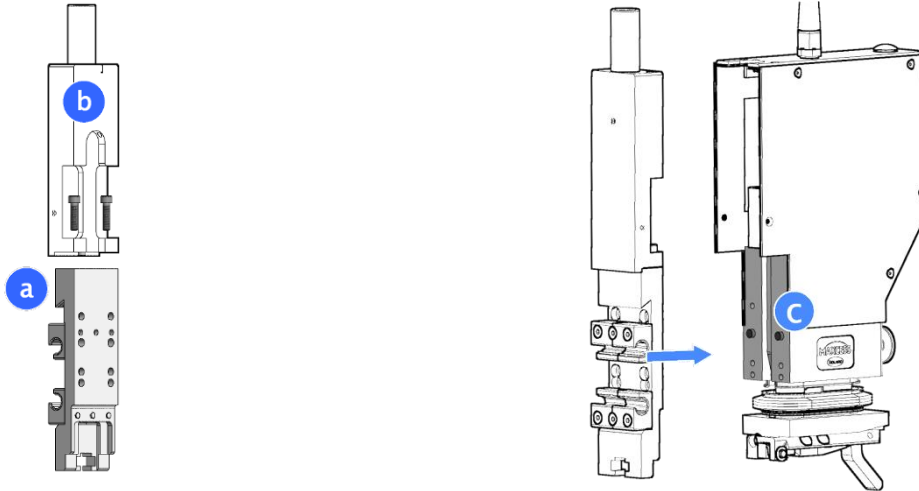
4. Remove two screws (i) to detach backplate (j). Keep screws for re-use.

## Install the DuraGlide mount assembly

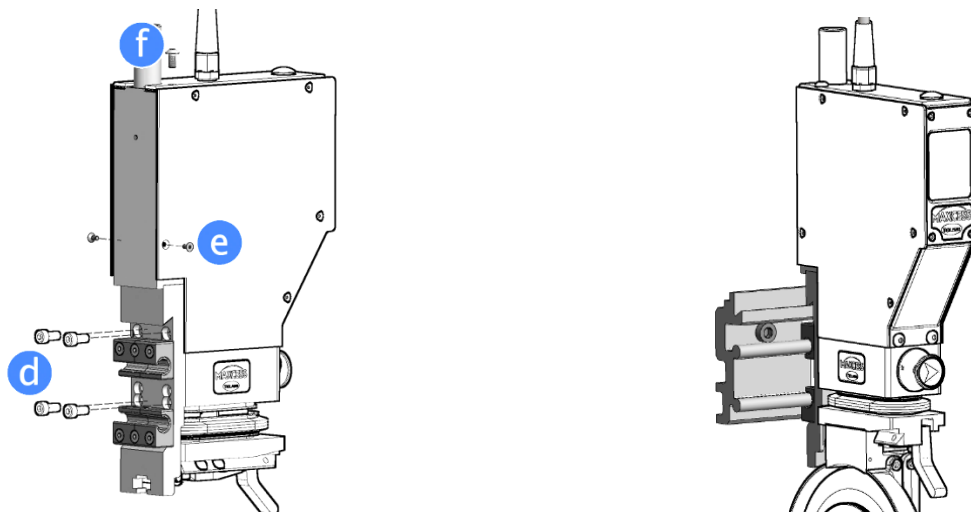
### Gib or *EasyGlider* mount

**Note:** The DuraGlide backplate is designed to accommodate the 360° Blade Guard cartridge.

**Class III:** You may need to loosen the bearings in order to install screws (d). After the backplate is mounted to the knifeholder, put the knifeholder on the short piece of guide bar (supplied with kit), align the bearings, checking for smooth movement, and tighten them down.



1. **Class II only:** Use two screws to attach pre-assembled mount components (a) to the top block (b).
2. When installing the mount assembly to the knifeholder, avoid pinching wiring at (c).



3. **Class II:** Secure the mount assembly with eight screws total (d, e, f).  
**Class III:** Secure backplate with screws (d).
4. Position the knifeholders on the DuraGlide guide bar and lock them in place.

# MAXCESS®

AMERICAS  
Tel +1.360.834.2345  
Fax +1.360.834.5865  
sales@maxcessintl.com  
www.maxcessintl.com

EUROPE, MIDDLE EAST  
AND AFRICA  
Tel +49.6195.7002.0  
Fax +49.6195.7002.933  
sales@maxcess.eu  
www.maxcess.eu

CHINA  
Tel +86.756.881.9398  
Fax +86.756.881.9393  
info@maxcessintl.com.cn  
www.maxcessintl.com.cn

INDIA  
Tel +91.22.27602633  
Fax +91.22.27602634  
india@maxcessintl.com  
www.maxcess.in

JAPAN  
Tel +81.43.421.1622  
Fax +81.43.421.2895  
japan@maxcessintl.com  
www.maxcess.jp

KOREA, TAIWAN,  
AND SE ASIA  
asia@maxcessintl.com  
www.maxcess.asia