



The GMA-BL is an integrated controller and actuator designed to improve the performance of your slitter/rewinder. GMA Actuators work with Fife Offset Pivot Guides for true plug-and play performance.

As Fife's first brushless actuator, the GMA-BL is virtually maintenance-free. Each actuator includes a color touch screen designed for ease of use with operation in 16 languages to support today's global manufacturing environment. This touch screen Operator Interface (OI) is optional on networked systems.



GENERAL SPECIFICATIONS

Power Supply

24 VDC ($\pm 25\%$)
Current 7.3 A, max

Certifications

UL61010, CE, CAN/CSA-C22.2,
CB Certificate
IP-52 Protection Class

Temperature Range

0 - 50°C

Stroke

50 mm - 305 mm
(approx. 2 inches to 12 inches)

Mounting Options

Rod End, Clevis, Flange, and
Rectangular

Inputs and Outputs

Sensor input (2)

Max Input ± 20 mA
Individually Programmable
0 to 10 mA (preferred)

Six Digital Inputs, Active High

Low Level: 0 to 0.9 V
High Level: 3.6 to 24 V

Four Outputs, Open Collector

55 mA at 1.6 V saturation
Max +30 VDC applied to output
+12 V available to port for
input reference

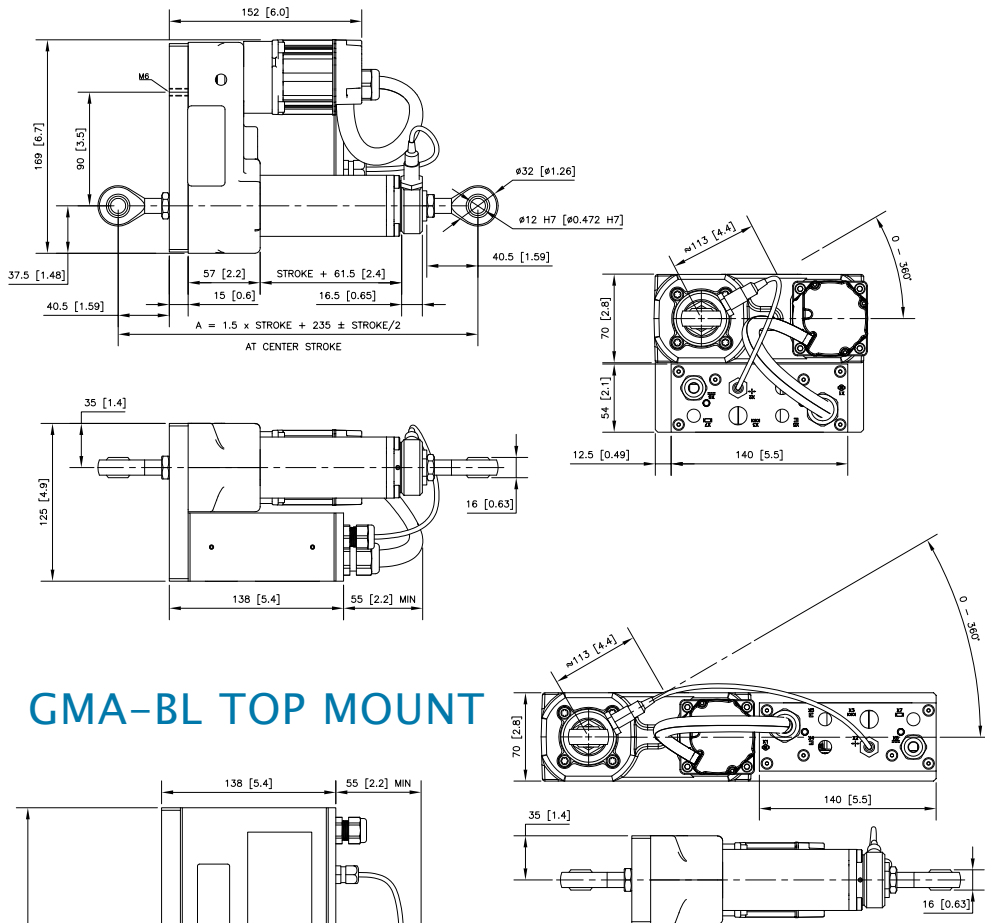
KEY FEATURES

- Integrated design for easy installation
- Brushless motor design means little to no maintenance
- Low inertia motor allows for faster actuator speeds
- Color touch screen Operator Interface (optional on networked systems) is easy to learn and operate
- Operation in 16 standard languages improves operator understanding
- Geared actuator can be optimized for thrust or speed
- Optional wall mount and panel mount available for Operator Interface

GMA-BL WEB GUIDING SYSTEM

GMA-BL TOP MOUNT

GMA-BL- a - b - ccc - d - 2 - ISCT - Z12



(d) = Controller Orientation
0 = none

(CCC)	STROKE	+/- STROKE
050	50 (2)	310 (12.2)
076	76 (3)	349 (13.7)
100	100 (4)	385 (15.2)
127	127 (5)	425.5 (16.8)
152	152 (6)	463 (18.2)
160	160 (6.3)	475 (18.7)
178	178 (7)	502 (19.8)
203	203 (8)	539.5 (21.2)
229	229 (9)	578.5 (22.8)
254	254 (10)	616 (24.3)
279	279 (11)	653.5 (25.7)
305	305 (12)	692.5 (27.3)

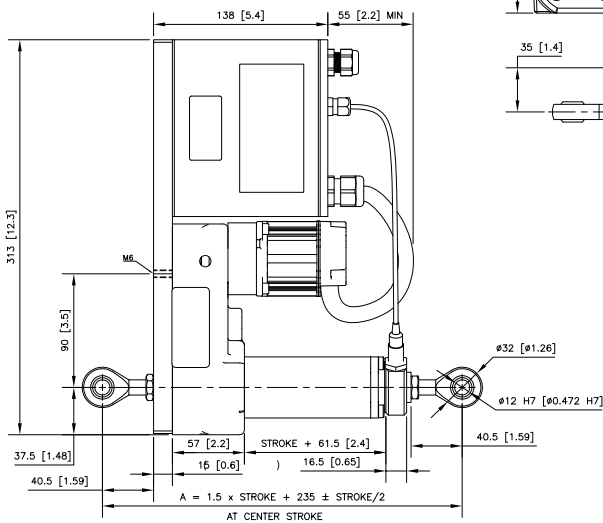
(b) = Gear Ratio

- 1 = 1.00
- 2 = 2.25
- 3 = 3.00
- 4 = 3.60
- 5 = 5.14
- 6 = 6.00
- 8 = 7.71

(a) = Motor Size

- 1 = Size 1
- 2 = Size 2

GMA-BL TOP MOUNT



Dimensions shown in mm (inches)

MODEL NUMBER	*MAXIMUM SHIFTABLE LOAD KG (LBS)	MAXIMUM DESIGN THRUST N (LBF)	MAXIMUM ACTUATOR SPEED MM/SEC (IN/SEC)
GMA-BL-1-3	1,043 (2,301)	614 (138)	59.5 (2.34)
GMA-BL-1-6	2,000 (4,410)	1177 (265)	29.8 (1.17)
GMA-BL-1-8	2,570 (5,666)	1512 (340)	23.2 (0.91)
GMA-BL-2-3	1,328 (2,927)	781 (176)	51.0 (2.01)
GMA-BL-2-6	2,545 (5,610)	1497 (337)	25.5 (1.00)
GMA-BL-2-8	3,269 (7,209)	1924 (433)	19.8 (0.78)

*The standard coefficient of friction is 0.06 for rolling bearings.



NORTH, CENTRAL AND SOUTH AMERICA

Tel +1.405.755.1600
Fax +1.405.755.8425
sales@maxcessintl.com
www.maxcessintl.com

INDIA

Tel +91.22.27602633
Fax +91.22.27602634
india@maxcessintl.com
www.maxcess.in

EUROPE, MIDDLE EAST AND AFRICA

Tel +49.6195.7002.0
Fax +49.6195.7002.933
sales@maxcess.eu
www.maxcess.eu

JAPAN

Tel +81.43.421.1622
Fax +81.43.421.2895
japan@maxcessintl.com
www.maxcess.jp

CHINA

Tel +86.756.881.9398
Fax +86.756.881.9393
info@maxcessintl.com.cn
www.maxcessintl.com.cn

KOREA, TAIWAN AND SE ASIA

asia@maxcessintl.com
www.maxcessintl.asia