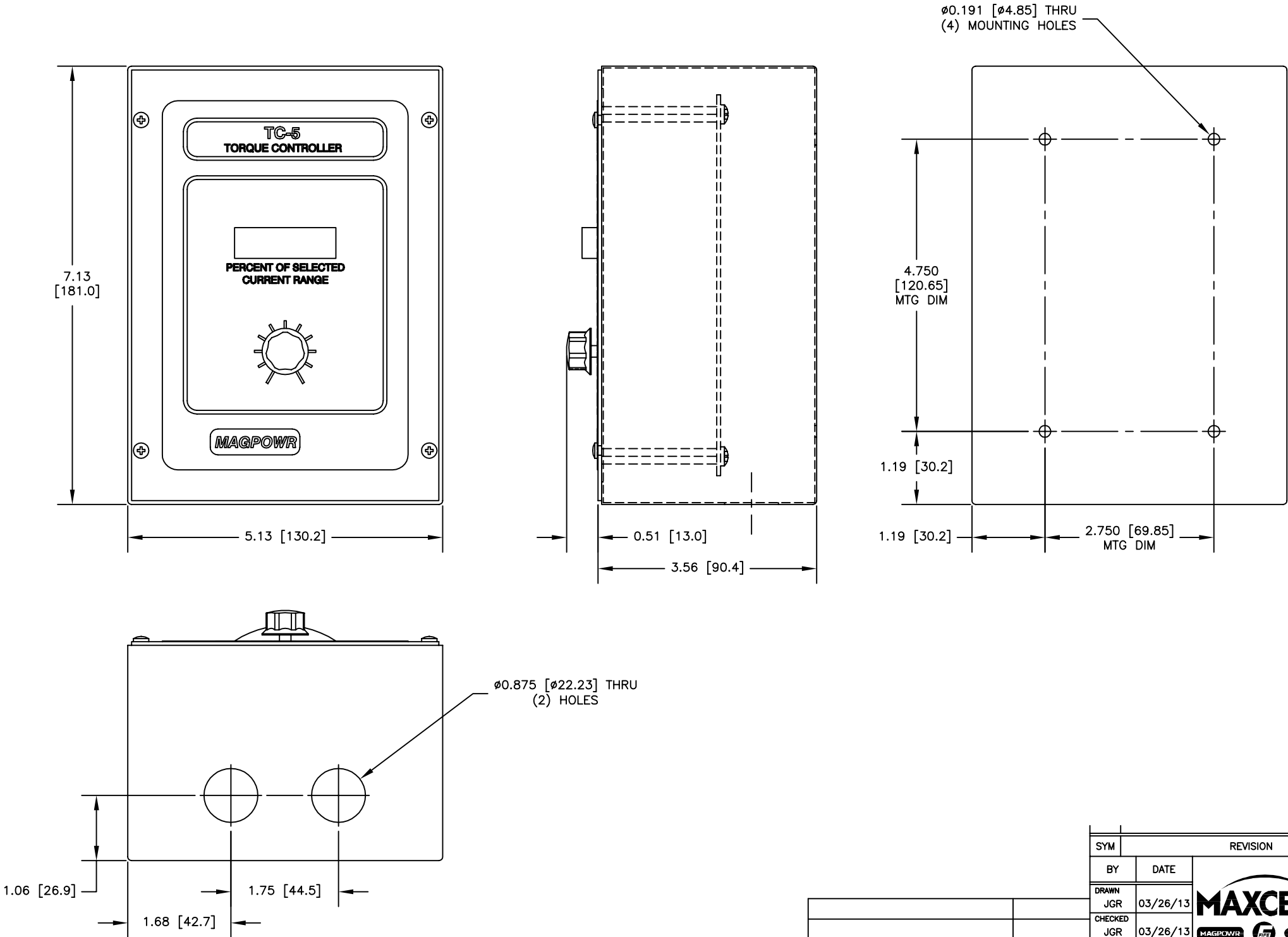


MAGPOWR INSTALLATION DRAWING  
FOR FURTHER ASSISTANCE,  
PLEASE CONTACT MAGPOWR AT  
800-624-7697  
WEB SITE: WWW.MAGPOWR.COM  
E-MAIL: MAGPOWR@MAGPOWR.COM



DRAWING REFERENCE		NUMBER	
TOLERANCES: UNLESS OTHERWISE SPECIFIED		This drawing is the property of FIFE CORPORATION. It is loaned with the understanding that it may not be reproduced nor may the information contained herein be used for the making of drawings or for manufacturing purposes without the written consent of FIFE CORPORATION.	
INCHES .X = $\pm 0.1$ .XX = $\pm 0.03$ .XXX = $\pm 0.01$		MM X = $\pm 0.25$ X = $\pm 0.5$ XX = $\pm 0.2$	
FRACTIONS = STOCK SIZE		GEOMETRICAL SYMBOLS PER ANSI Y14.5M UNLESS OTHERWISE SPECIFIED	
SURFACE FINISH EXPOSED 250 AA DE-BURR ALL EDGES 0.020 [0.5] MAX		STANDARD SHOP PRACTICES AND STANDARD SHOP RUN TOLERANCES PER DRAWING 40400	
LOCATION		OK	
SCALE		3/4	
SIZE		C	
DRAWING NO.		TC-5	
SHEET NO.		1 OF 1	
REV			