

**MAGPOWR Perma-Tork®**

**Copyright**

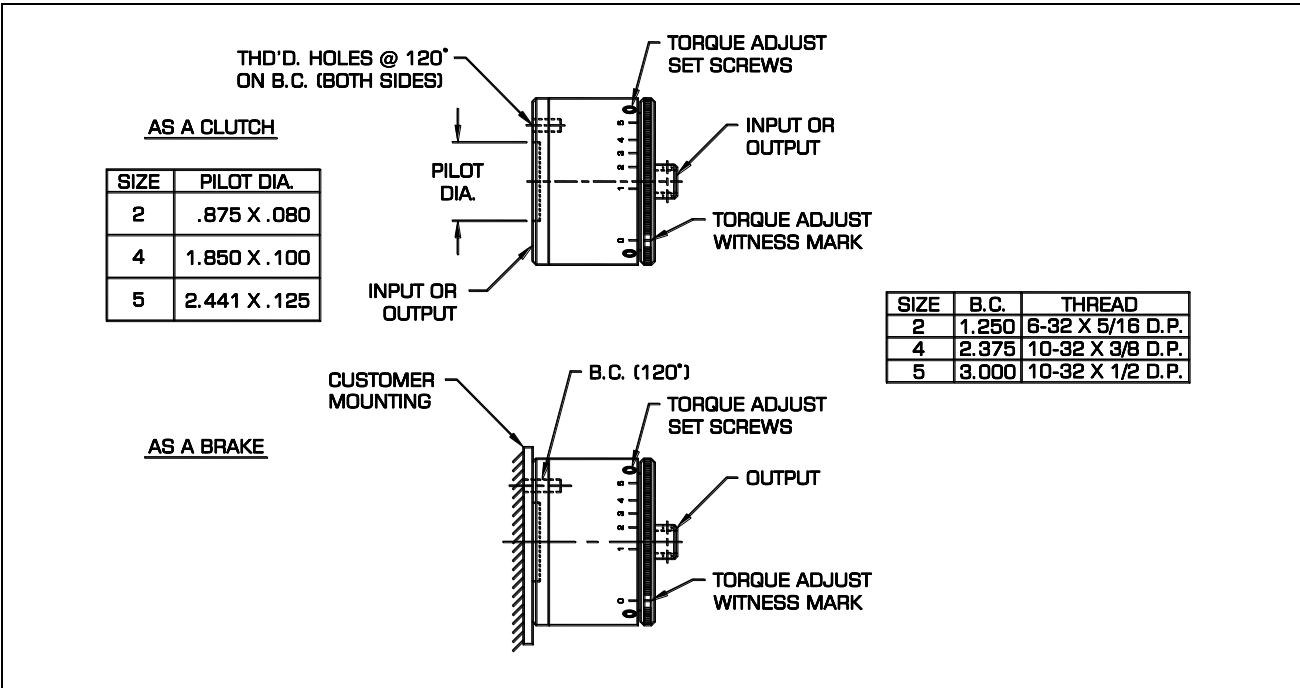
All of the information herein is the exclusive proprietary property of Maxcess International, and is disclosed with the understanding that it will be retained in confidence and will neither be duplicated nor copied in whole or in part nor be used for any purpose other than for which disclosed. Copyright 2004, all rights reserved. Periodically there will be updates to this manual. The latest version is available at our website or by calling the number on the back of this publication.

**Handling**

Handle and install with care. This is a precision-assembled unit with close internal clearances. Magnetic materials used are brittle by nature. **Avoid subjecting to shock loads. DO NOT DROP.**

**Installation**

Perma-Tork hollow shaft units are easily adaptable for use as either a clutch or brake. As a clutch, either the hollow shaft or the housing can be the input. The unit mounts on a shaft, and convenient bolt circles and a pilot diameter provide ease of attachment to a gear, pulley, etc. A stub shaft adapter can be used where a solid shaft interface is required.



**Adjustment**

Loosen the two torque adjust set screws and rotate large knurled adjustment ring to the desired relative setting. Re-tighten set screws to insure that the adjustment won't slip. Both hysteresis and eddy current units are adjustable.

## Cogging

With hysteresis units there can be a slight “memory” effect on the hysteresis disc when changing from a high to a low torque setting. This can result in “magnet lobes” or detents, causing minor cogging. It is correctable by rotating the output shaft slowly (25 to 250 rpm) while moving the adjustment from maximum to minimum.

## Heat Dissipation

For all continuous slip applications over 1500 rpm (size 2) and 450 rpm (size 4 and 5) heat generation and dissipation capacity should be considered.

Calculate as follows:  $W = .0118T \times \Delta\text{rpm}$

Where  $W$  = watts

$T$  = torque (lb-in)

$\Delta\text{rpm}$  = slip speed

For continuous duty applications, maximum watts should not exceed 10 (size 2), 22 (size 4) and 72 (size 5).

## Overhung Load Capacity

Distance from face of Perma-Tork unit is 1 inch.

Size	Size Load (lbs)
2	5
5	10
4	25

## Maintenance

Properly installed, these units are designed to be maintenance free.

## Specifications

Temperature range	Operation: 0 to 40° C [32 to 104° F]	Storage: -30 to 80° C [-22 to 176° F]
Relative humidity	5 to 85 %	
Pollution degree	2 (IEC664-1)	
Altitude	0 to 2000 meters [6562 feet]	



### AMERICAS

Tel +1.405.755.1600  
Fax +1.405.755.8425  
sales@maxcessintl.com  
www.maxcessintl.com

### EUROPE, MIDDLE EAST AND AFRICA

Tel +49.6195.7002.0  
Fax +49.6195.7002.933  
sales@maxcess.eu  
www.maxcess.eu

### CHINA

Tel +86.756.881.9398  
Fax +86.756.881.9393  
info@maxcessintl.com.cn  
www.maxcessintl.com.cn

### INDIA

Tel +91.22.27602633  
Fax +91.22.27602634  
india@maxcessintl.com  
www.maxcess.in

### JAPAN

Tel +81.43.421.1622  
Fax +81.43.421.2895  
japan@maxcessintl.com  
www.maxcess.jp

### KOREA, TAIWAN, AND SE ASIA

asia@maxcessintl.com  
www.maxcess.asia