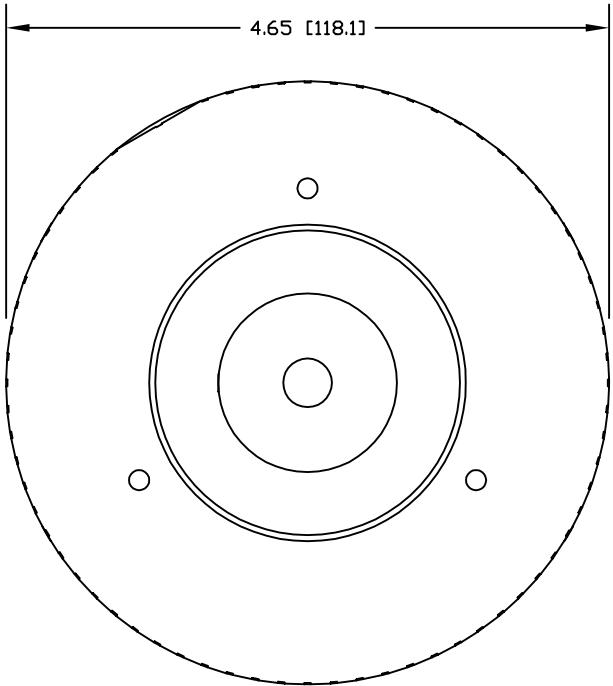
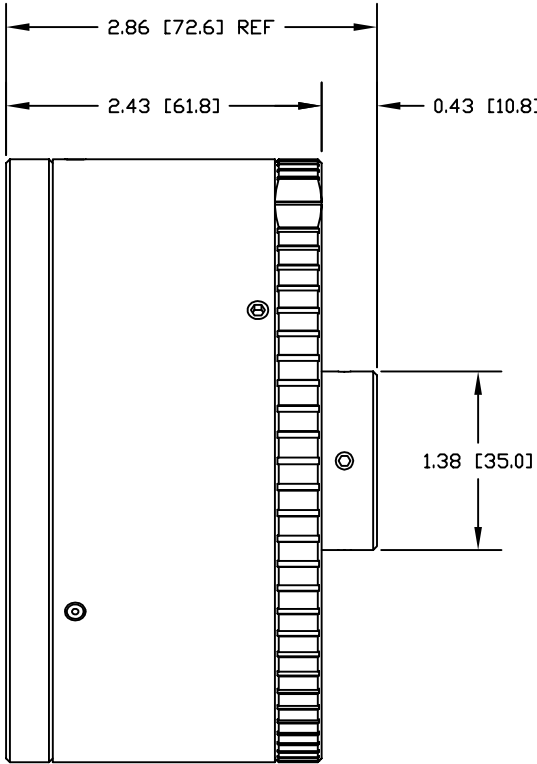
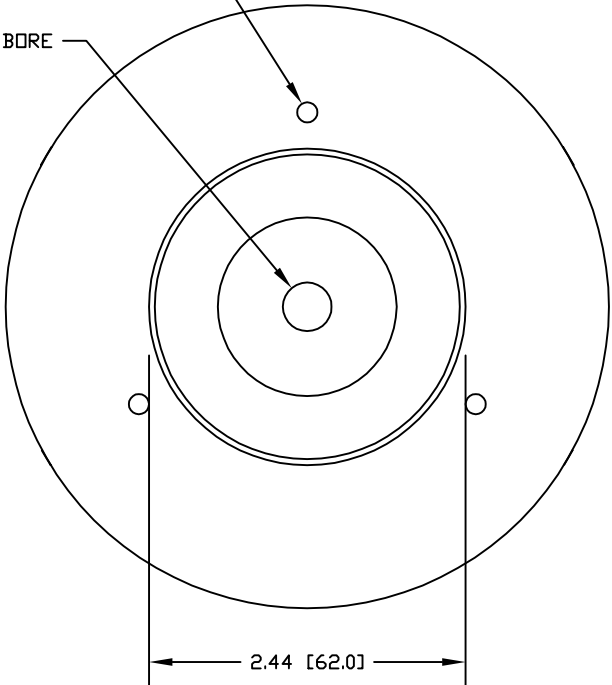


MAGPOWR INSTALLATION DRAWING
FOR FURTHER ASSISTANCE,
PLEASE CONTACT MAGPOWR AT
800-624-7697
WEB SITE: WWW.MAGPOWR.COM
E-MAIL: MAGPOWR@MAGPOWR.COM

#10-32 UNC X 0.50 [12.7] DP
(3) HOLES EVENLY SPACED ON A
3.000 [76.20] DIA BOLT CIRCLE
(TYP) BOTH SIDES

0.375 [9.53] DIA BORE



DRAWING REFERENCE		NUMBER	
TOLERANCES: UNLESS OTHERWISE SPECIFIED		This drawing is the property of FIFE CORPORATION. It is loaned with the understanding that it may not be reproduced nor may the information contained herein be used for the making of drawings or for manufacturing purposes without the written consent of FIFE CORPORATION.	
INCHES	MM	GEOMETRICAL SYMBOLS PER ANSI Y14.5M UNLESS OTHERWISE SPECIFIED	
.X = ±.1	X = ±2.5	STANDARD SHOP PRACTICES AND STANDARD SHOP RUN TOLERANCES PER DRAWING 40400	
.XX = ±.03	.X = ±.8	LOCATION	
.XXX = ±.010	.XX = ±.2	OK	
FRACTIONS = STOCK SIZE		SCALE	
SURFACE FINISH		SIZE	
EXPOSED	MACHINED	DRAWING NO.	
250 AA	125 AA	HC5-38	
DE-BURR ALL EDGES 0.020 [0.5] MAX		SHEET NO.	
		1 OF 1	
		REV	

SYM	REVISION	BY	DATE	APVD
BY	DATE			
DRAWN	12/30/10			
LZ				
CHECKED	09/30/13			
LZ				
APPROVED	09/30/13			
LZ				

222 WEST MEMORIAL ROAD (73114-2317) POST OFFICE BOX 26508 OKLAHOMA CITY, OK 73126-0508, U.S.A. PHONE: (405) 755-1600 FAX: (405) 755-8425
TITLE
MAGPOWR OUTLINE DIMENSION DRAWING PERMA-TORK CLUTCH SIZE 5, 3/8" BORE 2-25 LB-IN