

# FIFE SE-37 ULTRASONIC SENSOR

# MAXCESS®

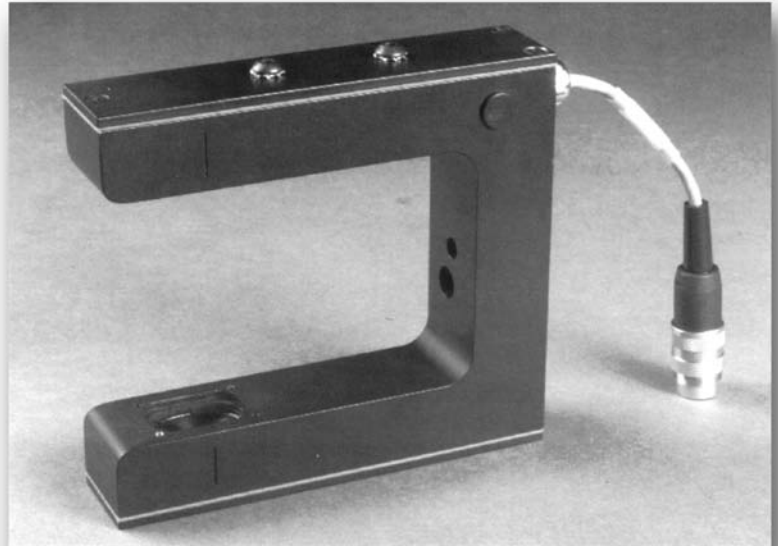
MAGPOWR



TIDLAND

With a control range of 25.4 mm (1 inch) and a sensing gap of 76.2 mm (3 inches), the SE-37 is our largest ultrasonic sensor. Temperature stabilized, this sensor is ideal for guiding both clear films and most opaque webs.

Because the SE-37 is unaffected by optical variation or ambient light, it eliminates the need for multiple sensors, resulting in decreased downtime and increased productivity. Improved circuitry reduces the effect of standing waves and temperature variations, which improves the overall operational performance.



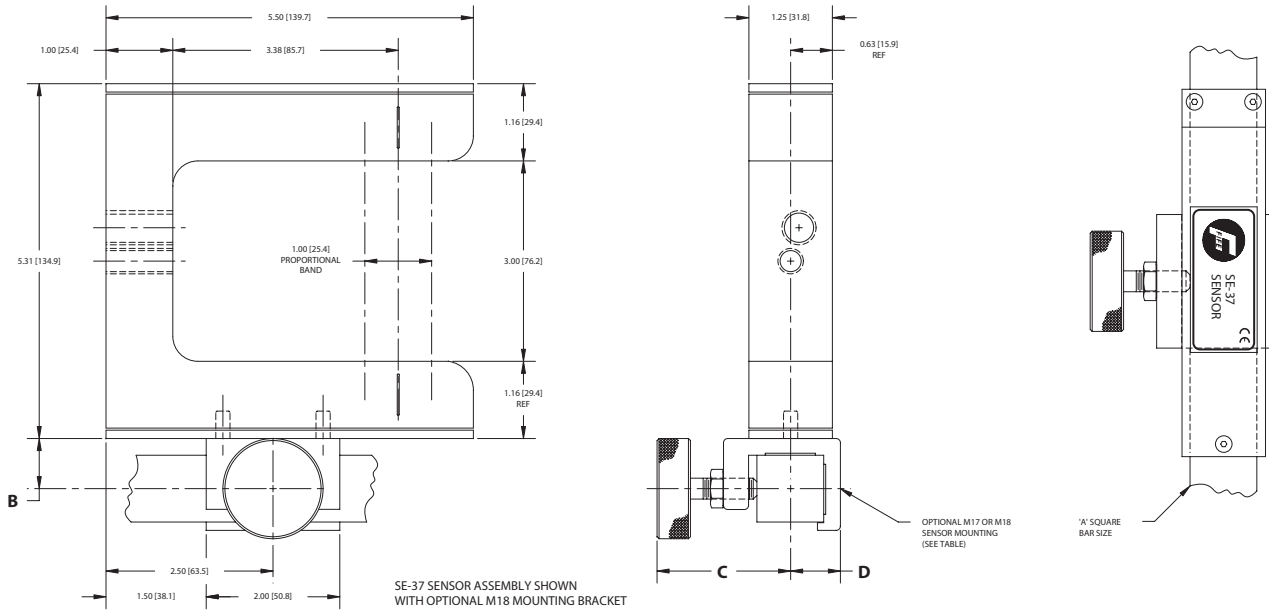
## GENERAL SPECIFICATIONS

<b>Product Name</b> SE-37 Ultrasonic Sensor	<b>Output Signal</b> 0 to 10 mA
<b>Linearity</b> 5% nominal maximum error	<b>Update Rate</b> 6 ms
<b>Plane Change</b> 5% nominal maximum error	<b>Weight</b> 566 grams (20 ounces)
<b>Power Required</b> 10 to 15 VDC at <27 mA	<b>Temperature Range</b> 0° to 60° C (32° to 140° F)

## KEY FEATURES

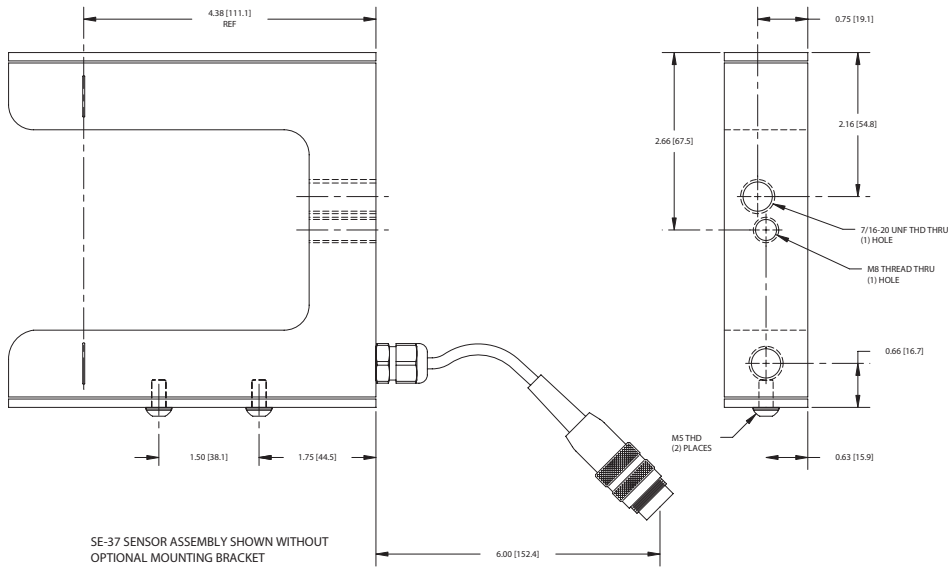
- The largest of the ultrasonic family, ideal for guiding the thinnest and clearest of films, as well as most opaque webs
- Immune to web plane changes and unaffected by optical variations or ambient light, including sunlight
- Will not affect photosensitive paper or film
- Compatible with all Fife controllers
- Flexible mounting and positioning assemblies ensure quick and easy installation
- Electrostatic discharge protected

# FIFE SE-37 ULTRASONIC SENSOR



Dimensions shown in parenthesis are in inches

SENSOR MOUNTING	A SQUARE BAR	B	C	D
M-17	19.05 mm (0.75 inch)	15.9 mm (0.63 inch)	38.10 mm (1.50 inches)	16.00 mm (0.63 inch)
M-18	25.4 mm (1 inch)	19.10 mm (0.75 inch)	50.80 mm (2.00 inches)	19.1 mm (0.75 inch)



# MAXCESS®



## NORTH, CENTRAL AND SOUTH AMERICA

Tel +1.405.755.1600  
Fax +1.405.755.8425  
sales@maxcessintl.com  
www.maxcessintl.com

## INDIA

Tel +91.22.27602633  
Fax +91.22.27602634  
india@maxcessintl.com  
www.maxcess.in

## EUROPE, MIDDLE EAST AND AFRICA

Tel +49.6195.7002.0  
Fax +49.6195.7002.933  
sales@maxcess.eu  
www.maxcess.eu

## JAPAN

Tel +81.43.421.1622  
Fax +81.43.421.2895  
japan@maxcessintl.com  
www.maxcess.jp

## CHINA

Tel +86.756.881.9398  
Fax +86.756.881.9393  
info@maxcessintl.com.cn  
www.maxcess.cn

## KOREA, TAIWAN AND SE ASIA

Tel +65.9620.3883  
Fax +65.6235.4818  
asia@maxcessintl.com