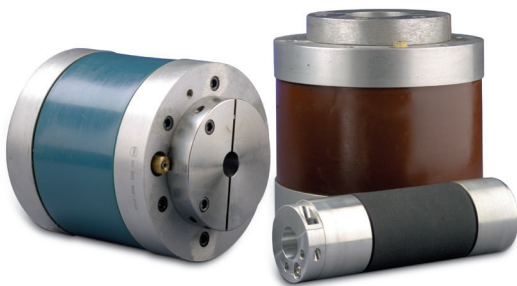
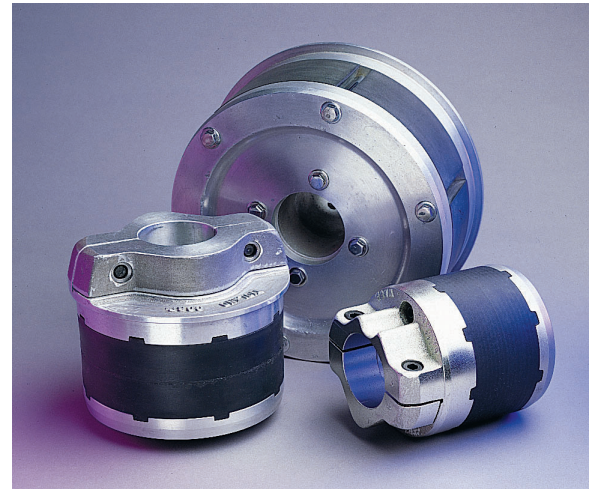


MAXCESS®

TIDLAND

UNWIND & REWIND APPLICATIONS

These rugged, high-torque air chucks have established a reputation for reliable, non-slip grip that delivers maximum roll control, and permits the running of machines at maximum speed. Air Chucks grip a wide area of the inside core wall with a firm, even pressure that prevents slippage and increases core life.



Popular models and sizes from NimCor have been added to the Tidland offering, creating the industry's largest selection of Air Chucks to suit any need.

GENERAL SPECIFICATIONS

Size Range

Core ID: 76 to 305 mm (3 to 12 inches)

Overall Length: 251 to 238 mm (9.88 to 9.38 inches)

Maximum Bore: From 38 to 184 mm (1.50 to 7.25 inches)

Maximum Square: From 32 to 130 mm (1.25 to 5.13 inches)

Torque Range (at 5.5 Bar/80 PSI)

From 271 to 2337 Nm (2,400 to 20,684 lb-in)

Weight Range

From 2 to 22 kg (4 to 48 lbs)

KEY FEATURES

- Standard models are heavy-duty, using cast aluminum parts
- High torque design provides maximum grip of the core – even at high speeds
- Simple, durable design for trouble-free operation
- Standard and large bore models available
- Easy to maintain with replaceable expanding elements
- Ergonomic alternative available as the Force5 Lightweight Air Chuck

SPECIFICATIONS, CONTINUED

CHUCK DIAMETER		CHUCK TYPE	OVERALL LENGTH WITH CLAMP		COLLAPSED DIAMETER		TORQUE PER CHUCK (80 PSI/ 5.5 BAR)		MAXIMUM BORE		MAXIMUM SQUARE		WEIGHT OF CHUCK	
mm	inch		mm	inch	mm	inch	mm	lb-inch	mm	inch	mm	inch	kg	lb
76	3	Air-Std	251	9.88	75	2.97	271	2,400	38	1.5	32	1.25	2	4
102	4	Air-Std	192	7.56	98	3.88	403	3,570	49	1.94	35	1.38	3	7
127	5	Air-Std	194	7.63	124	4.88	442	3,910	64	2.50	44	1.75	4	9
127	5	Air-Large bore	232	9.13	124	4.88	487	4,310	76	3.00	51	2.00	5	11
146	5.75	Air-Large bore	232	9.13	143	5.63	722	6,390	76	3.00	51	2.00	5	12
152	6	Air-Std	200	7.88	149	5.88	582	5,150	75	2.97	51	2.00	5	12
203	8	Air-Std	200	7.88	200	7.88	1683	14,900	89	3.50	76	3.00	10	22
254	10	Air-Std	200	7.88	251	9.88	1943	17,200	89	3.50	N/A	N/A	16	35
254	10	Air-Large bore	232	9.13	248	9.75	1808	16,000	184	7.25	N/A	N/A	14	30
305	12	Air-Std	200	7.88	302	11.88	2337	20,684	102	4.00	N/A	N/A	22	48
305	12	Air-Large Bore	238	9.38	298	11.75	2118	18,750	184	7.25	N/A	N/A	18	40

Other sizes available. Contact Tidland Customer Service for more information.



Tidland air chucks can also be mounted on a mandrel to create a light-weight chuck shaft. With an interconnecting hose, you have a single air inlet for ease of inflation and deflation. Our popular Force5 Lightweight Air Chucks are shown above mounted on a carbon fiber shaft creating a lightweight, but very strong shaft solution for a variety of applications.



NORTH, CENTRAL AND SOUTH AMERICA

Tel +1.360.834.2345
 Fax +1.360.834.5865
 sales@maxcessintl.com
 www.maxcessintl.com

INDIA

Tel +91.22.27602633
 Fax +91.22.27602634
 india@maxcessintl.com
 www.maxcess.in

EUROPE, MIDDLE EAST AND AFRICA

Tel +49.6195.7002.0
 Fax +49.6195.7002.933
 sales@maxcess.eu
 www.maxcess.eu

JAPAN

Tel +81.43.421.1622
 Fax +81.43.421.2895
 japan@maxcessintl.com
 www.maxcess.jp

CHINA

Tel +86.756.881.9398
 Fax +86.756.881.9393
 info@maxcessintl.com.cn
 www.maxcessintl.com.cn

KOREA, TAIWAN AND SE ASIA

Tel +65.9620.3883
 Fax +65.6235.4818
 asia@maxcessintl.com