



# NimCor Grabber Chuck

## Maintenance

---



---

EN

MI 780390 1



Do not inflate chuck outside of core!  
Inflation element may rupture and may result in personal injury.

## Required tools and equipment

5/16 hex key wrench  
socket wrench for valve:  
    7/16 (Schrader valve)  
    5/8 (quick exhaust)  
Several ounces of soapy water

## Disassembly

1. Using the hex key wrench, remove all socket head cap screws (4) and (7) from both ends of the chuck. This will automatically disassemble the clamping collar (6).
2. Using the socket wrench, remove the air valve (9).
3. Remove the flanges (3) and (5) by engaging the cap screw (7) in the jacking screw holes (10).
4. Remove the old inflation element (2) from the body. If necessary, cut the element away from the body.

## Assembly

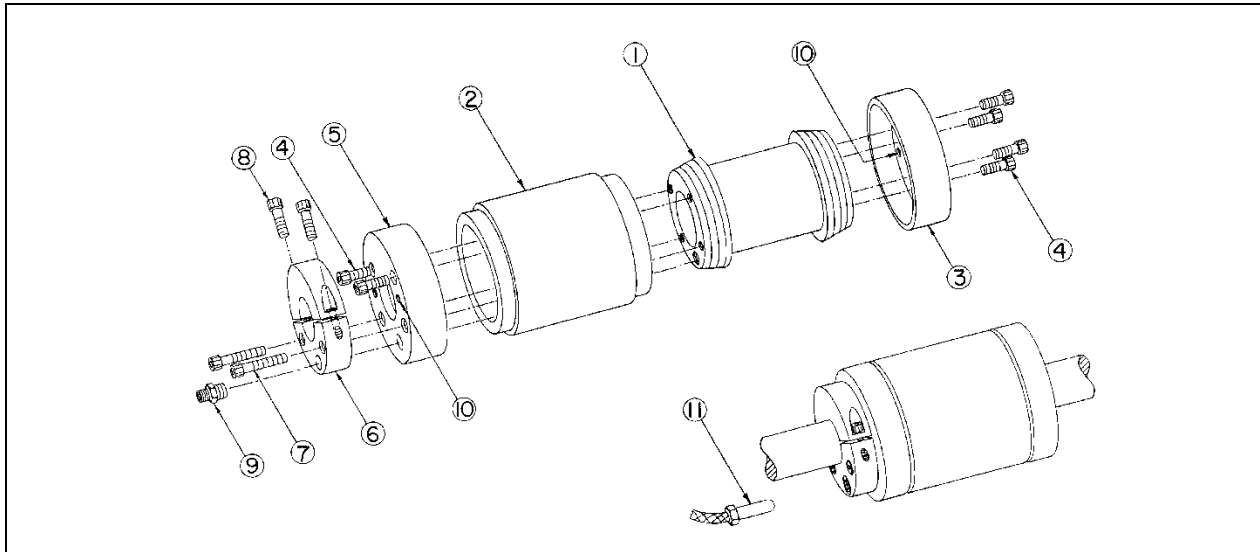
1. Apply a small amount of soapy water around periphery of serrated ends of the body.
2. Push a new inflation element onto the body and center it on the body.
3. Apply a small amount of soapy water around the inside of the flanges.
4. Push the flange onto the inflation element, aligning the tapped holes in the body with the countersunk holes in the flanges. Ensure that the air valve hole in the flange is aligned with the 1/8 pipe thread hole in the body.
5. Using the socket head cap screw (7), force the flanges onto the element until the socket head cap screw (4) can engage the threads in the body.
6. Assemble the clamping collar onto the flange using the socket head cap screws (7). Tighten all screws until the flanges are flush against the body.

### Note 1.

Tighten screws alternately to keep flanges square over the element.  
Alternate tightening the flanges to keep the element central on the body.

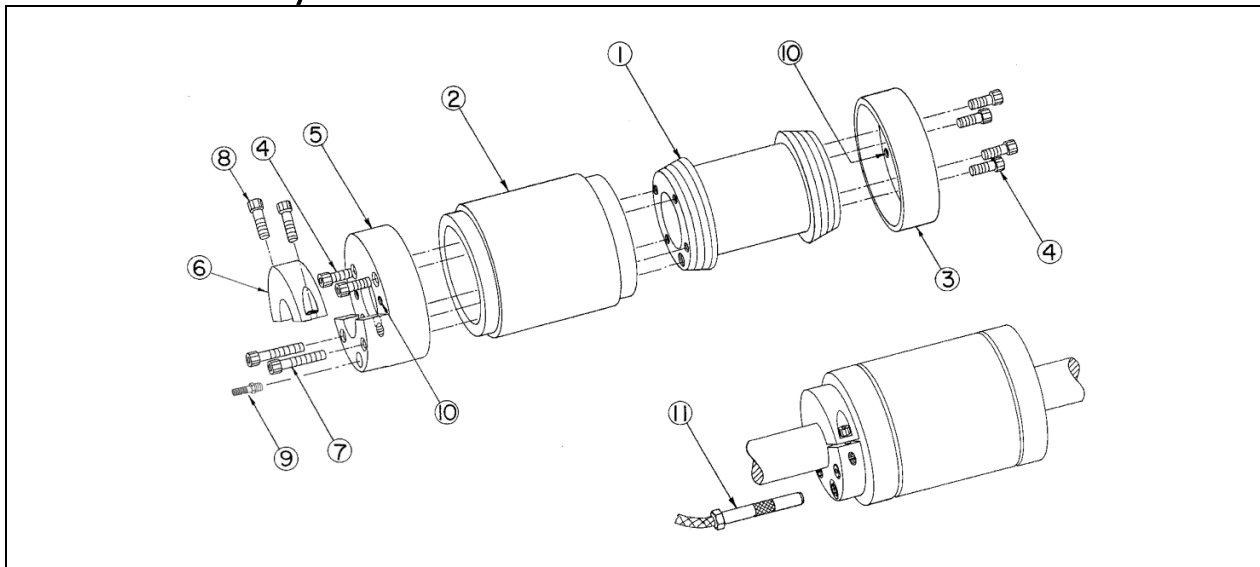
# MAINTENANCE PROCEDURE

## 4 inch to 20 inch chucks



Item	Description	Qty	Item	Description	Qty
1	Body	1	7	Cap screw, 3/8-16 UNC x 1 3/4 LG	2
2	Inflation element (elastomeric)	1	8	Cap screw, 3/8-16 UNC x 1 1/4 LG	2
3	Sealing flange (non-air end)	1	9	Air valve 1/8 NPT (quick exhaust)	1
4	Cap screw, 3/8-16 UNC x 3/4 LG	6	10	3/8-16 tapped holes (jacking screws)	2
5	Sealing flange (air end)	1	11	Air nozzle	1
6	Split clamping collar	1	* See chart on back page for valve part numbers.		

## 3 inch chucks only



Item	Description	Qty	Item	Description	Qty
1	Body	1	7	Cap screw, 3/8-16 UNC x 1 3/4 LG	2
2	Inflation element	1	8	Cap screw, 5/16-18 UNC x 3/4 LG	2
3	Sealing flange (non-air end)	1	9	Air valve 1/16 NPT (Schrader)	1
4	Cap screw, 10-32 UNC x 3/4 LG	8	10	3/8-16 tapped holes (jacking screws)	2
5	Sealing flange (air end)	1	11	Air nozzle (Shrader)	1
6	Half clamping collar	1	* See chart on back page for valve part numbers..		

# AIR VALVE PARTS

Quick exhaust valve		
	Part No.	
	old	new
Valve	18-LPT	VAL-43
Air nozzle	RT-100	AIR-08
Socket wrench 5/8	VAL/SOC-F-718	

Shrader valve		
	Part No.	
	old	new
Valve	02500	VAL-50
Air nozzle	5108	AIR-01
Socket wrench 7/16	VAL/SOC-11-214	



**NORTH, CENTRAL  
AND SOUTH AMERICA**  
 Tel +1.360.834.2345  
 Fax +1.360.834.5865  
 sales@maxcessintl.com  
 www.maxcessintl.com

**INDIA**

Tel +91.22.27602633  
 Fax +91.22.27602634  
 india@maxcessintl.com  
 www.maxcess.in

**EUROPE, MIDDLE EAST  
AND AFRICA**  
 Tel +49.6195.7002.0  
 Fax +49.6195.7002.933  
 sales@maxcess.eu  
 www.maxcess.eu

**JAPAN**

Tel +81.43.421.1622  
 Fax +81.43.421.2895  
 japan@maxcessintl.com  
 www.maxcess.jp

**CHINA**

Tel +86.756.881.9398  
 Fax +86.756.881.9393  
 info@maxcessintl.com.cn  
 www.maxcessintl.com.cn

**KOREA, TAIWAN,  
AND SE ASIA**

Tel +65.9620.3883  
 Fax +65.6235.4818  
 asia@maxcessintl.com