

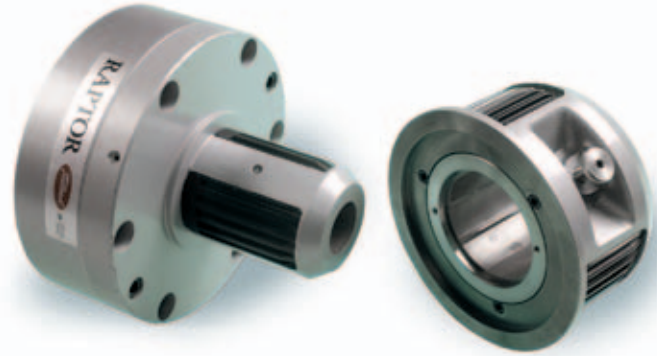


Raptor Series Air Powered Lug Chucks help eliminate core damage usually associated with shaftless applications. These chucks are designed for high speed printing, laminating, sheeting applications on unwind flying or zero speed splicers and other shaftless unwind/rewind applications.

Converters can dramatically improve splice reliability, increase operating speeds and save time and money by allowing repeated use of cores. Eliminating core end problems also reduces dust. Wide-footprint lugs provide a consistent grip on the core, without damaging the inside.

Ease of removal is maintained with mechanical and secondary pneumatic retraction of lugs, ensuring that the lugs never 'stick' in the core.

Unlike many chucks on the market, Raptor Series Air Powered Lug Chucks offer valuable time savings and ergonomic benefits. Operators no longer have to remove the entire chuck from the machine for routine maintenance or core size changes, reducing downtime and the risk of injury while increasing productivity.



GENERAL SPECIFICATIONS

NOMINAL CORE DIAMETER	MM	76.2	152.4
	INCHES	3.00	6.00
Maximum Roll Weight	KG	3181.8	5454.5
	LBS	7000	12000
Mounting Bolt Circle Diameter	MM	177.8	203.2
	INCH	7	8
Housing Width	MM	76.5	73.9
	INCH	3.01	2.91

KEY FEATURES

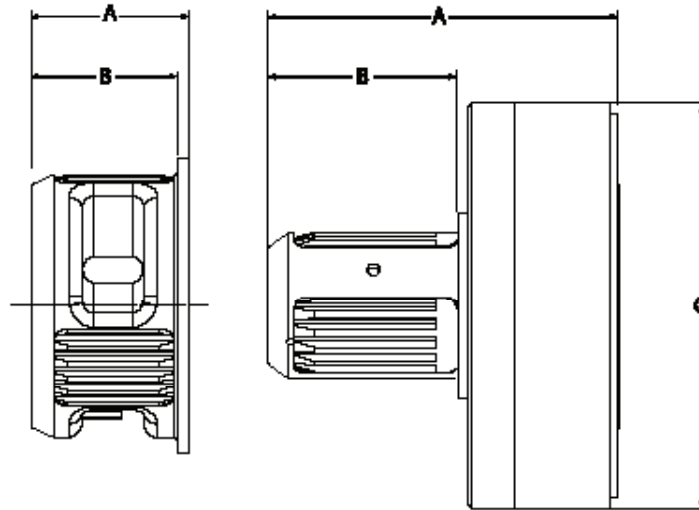
- Wide-footprint lug
- Non-destructive gripping of cores
- Positive mechanical retraction of lugs
- Secondary, pneumatic retraction of lugs (backup)
- Pneumatic activation of lugs
- Non-slip grip of core
- Durable construction
- Improved core centering (concentric) expansion within 0.381 mm (.015 inch) TIR
- Continuous expansion throughout roll set

RAPTOR SERIES

AIR POWERED LUG CHUCK

NOMINAL CORE DIAMETER	BASE CHUCKS				3 INCH (76.2 MM) ADAPTERS					6 INCH (152.4 MM) ADAPTERS		
	MM	76.2	152.4	127	150.1	152.4	171.5	188.5	203.2	203.2	254	304.8
	INCHES	3.00	6.00	5.00	5.91	6.00	6.75	7.42	8.00	8.00	10.00	12.00
Maximum Allowable Torque*	NM	795.3	2253.4	1325.8	1567	1591.5	1789.6	1968.1	2122	3005.5	3756.7	4507.8
	IN-LB	7040	19950	11730	13870	14080	15840	17410	18780	26600	33249	39900
Collapsed Diameter	MM	74.7	150.9	125.5	148.6	150.9	169.9	186.9	201.7	201.7	252.5	303.3
	INCH	2.94	5.94	4.94	5.84	5.94	6.69	7.36	7.94	7.94	9.94	11.94
Expanded Diameter	MM	81.5	159	131.8	155.4	157.2	177.3	193.5	208	209.8	260.6	311.4
	INCH	3.21	6.26	5.19	6.12	6.19	6.98	7.62	8.19	8.26	10.26	12.26
Expanding Lug Length	MM	84.1			67.6			71.1				
	INCH	3.31			2.66			2.80				
Expanding Lug Width	MM	43.7			49.8			60.2				
	INCH	1.72			1.96			2.37				
Overall Length (A)	MM	179.6	177	89.7			100.6					
	INCH	7.07	6.97	3.53			3.96					
Core Penetration (B)	MM	98			83.3			85.3	88.5	88.5		
	INCH	3.86			3.28			3.36	3.48	3.48		
Housing Diameter (C)	MM	203.2	245.4	N/A			N/A					
	INCH	8.00	9.66	N/A			N/A					

*Maximum Allowable Torque until core slips assuming 80 psi, good quality fiber core and two brakes/drives. If the application uses only one brake/drive then reduce the maximum allowable torque by 50%.



Raptor Series Air Powered Lug Chuck

MAXCESS®



NORTH, CENTRAL AND SOUTH AMERICA

Tel +1.360.834.2345
 Fax +1.360.834.5865
 sales@maxcessintl.com
 www.maxcessintl.com

INDIA

Tel +91.22.27602633
 Fax +91.22.27602634
 india@maxcessintl.com
 www.maxcess.in

EUROPE, MIDDLE EAST AND AFRICA

Tel +49.6195.7002.0
 Fax +49.6195.7002.933
 sales@maxcess.eu
 www.maxcess.eu

JAPAN

Tel +81.43.421.1622
 Fax +81.43.421.2895
 japan@maxcessintl.com
 www.maxcess.jp

CHINA

Tel +86.756.881.9398
 Fax +86.756.881.9393
 info@maxcessintl.com.cn
 www.maxcessintl.com.cn

KOREA, TAIWAN AND SE ASIA

Tel +65.9620.3883
 Fax +65.6235.4818
 asia@maxcessintl.com