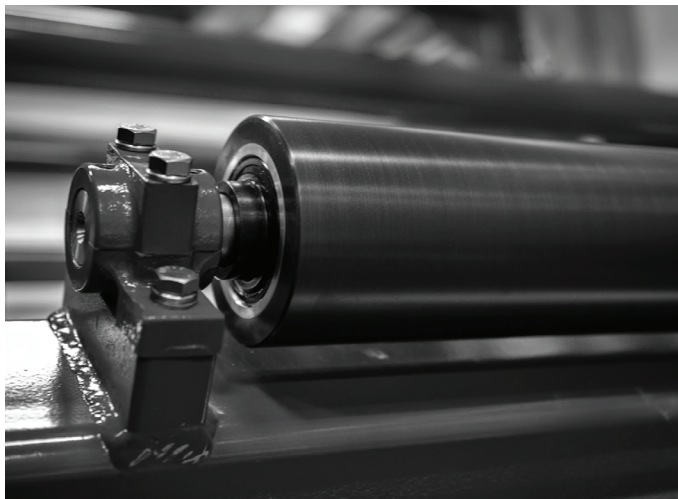


## Shafts and Mounts Dead Shaft Idler Rolls



### Steel and Stainless Steel Shafts

Ready to install  
Faced and chamfered ends  
Drilled and tapped ends available  
Easy, single source ordering

### Idler Mounts

Easy installation  
Fit all standard shafts  
Rugged enough to secure the largest dead shaft idler  
Quick between frame or adjustable to-frame mounting

Don't waste time shopping around for idler accessories. Complete your dead shaft idler order with Shafts and Mounts from Webex.

## STEEL AND STAINLESS STEEL SHAFTS

Our bearing quality carbon steel shafts are offered faced and chamfered or drilled and tapped for mounting through a frame. There is a shaft option here to meet most applications and installations.

Our Stainless Steel Shafts are made from Bearing Quality Type 303/304 Annealed and Centerless Ground Stainless Steel. Typical diameter tolerances are 0.0005 inch to 0.002 inch under the specified size.

### STEEL AND STAINLESS STEEL SHAFT SPECIFICATIONS

#### Shaft Weight

0.75 inch diameter = 0.125 lbs/inch
1.00 inch diameter = 0.233 lbs/inch
1.25 inch diameter = 0.348 lbs/inch
1.50 inch diameter = 0.501 lbs/inch
2.00 inch diameter = 0.890 lbs/inch

#### Standard Drilling and Tapping Specifications

0.75 inch diameter = 3/8-16 UNC x 0.75 inch deep
1.00 inch diameter = 1/2-13 UNC x 1 inch deep
1.25 inch diameter = 1/2-13 UNC x 1 inch deep
1.50 inch diameter = 1/2-13 UNC x 1 inch deep
2.00 inch diameter = 3/4-10 UNC x 1 inch deep

**SPECIAL SHAFT MATERIALS AVAILABLE**

*Speak with a roll expert!*

Call 1.920.729.6666 or email [sales@webexinc.com](mailto:sales@webexinc.com)

# STANDARD IDLER MOUNTS

Webex gives you three simple solutions to mounting any Webex Dead Shaft Idler Roll quickly and conveniently.

Split Flange Mounts

Quickie Mounts

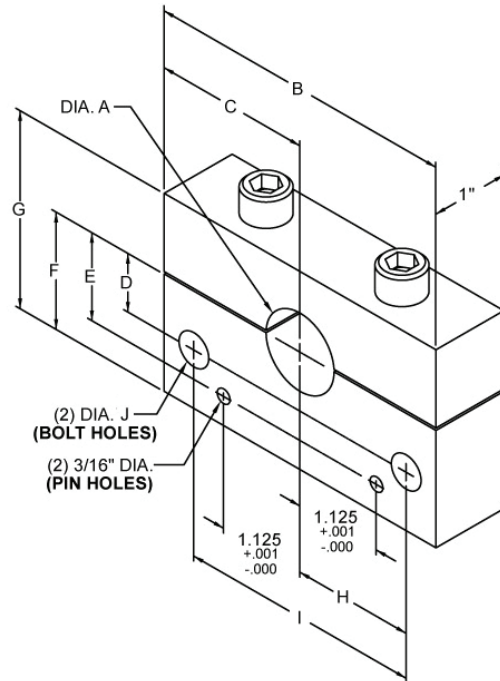
Rigid Mounts

Installation can be made easily to machine side-frames or to other machine framework.

Webex Mounts are designed to hold and secure all standard Dead Shaft Idler Rolls.

## Split Flange Mounts

Split flange mounts are available in sizes to fit a full range of shaft diameters. The split design allows mounting between frames and convenient replacement of idlers without disturbing alignment. Bottom half of closely dimensioned mount secures firmly to frame. Top of mount is fastened to bottom half with heavy steel bolts.

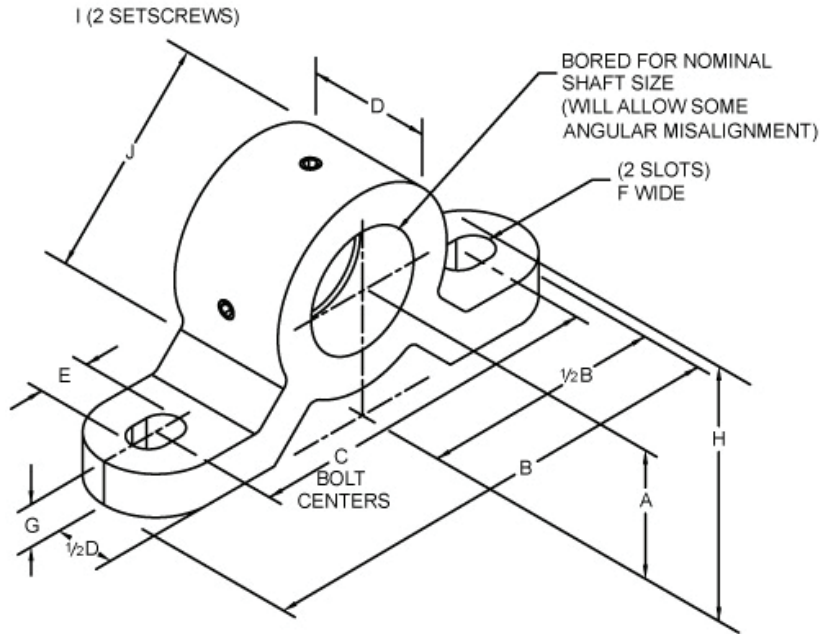


Shaft Nom. Diameter	A	B	C	D	E +.001	F	G	H	I	J	Part No.
0.5"	0.502" 0.500"	4"	2"	0.75"	1.125"	1.5"	2.531"	1.5625"	3.125"	0.4375"	4891-000-B050
0.625"	0.627" 0.625"	4"	2"	0.75"	1.125"	1.5"	2.531"	1.5625"	3.125"	0.4375"	4891-000-B063
0.75"	0.752" 0.750"	4"	2"	0.75"	1.125"	1.5"	2.531"	1.5625"	3.125"	0.4375"	4891-000-B075
1"	1.002" 1.000"	4"	2"	0.75"	1.125"	1.5"	2.531"	1.5625"	3.125"	0.4375"	4891-000-B100
1.25"	1.252" 1.500"	4"	2"	0.75"	1.125"	1.5"	2.531"	1.5625"	3.125"	0.4375"	4891-000-B125
1.5"	1.502" 1.500"	5"	2.5"	1.25"	1.625"	2"	3.406"	1.875"	3.75"	0.5625"	4892-000-B150
2"	2.002" 2.000"	5"	2.5"	1.25"	1.625"	2"	3.406"	1.875"	3.75"	0.5625"	4892-000-B200

# STANDARD IDLER MOUNTS

## Quickie Mounts

The quickie mount can accept minor misalignment and allows a great deal of flexibility for positioning, leveling and proper alignment. You can utilize these mounting blocks on unmachined structural steel framework.



Shaft Nom. Diameter	A	B	C	D	E	F	G	H	I	J	Part No.
0.75"	1.1875"	4.5"	3.5"	1.375"	0.625"	0.4375"	0.5"	2.0625"	0.25" - 20	1.75"	007-002-6
1"	1.3125"	5"	3.75"	1.375"	0.625"	0.4375"	0.5"	2.3125"	0.25" - 20	2"	007-002-1
1.25"	1.4375"	5.5"	4.125"	1.375"	0.625"	0.4375"	0.5"	2.5625"	0.25" - 20	2.25"	007-002-2
1.5"	1.5625"	6.5"	4.75"	1.5"	0.875"	0.5625"	0.5"	2.8125"	0.375" - 16	2.5"	007-002-3
2"	1.8125"	6.5"	5"	1.5"	0.875"	0.5625"	0.625"	3.3125"	0.375" - 16	3"	007-002-5

**ADDITIONAL SUPPORT AVAILABLE**

*Speak with a roll expert!*

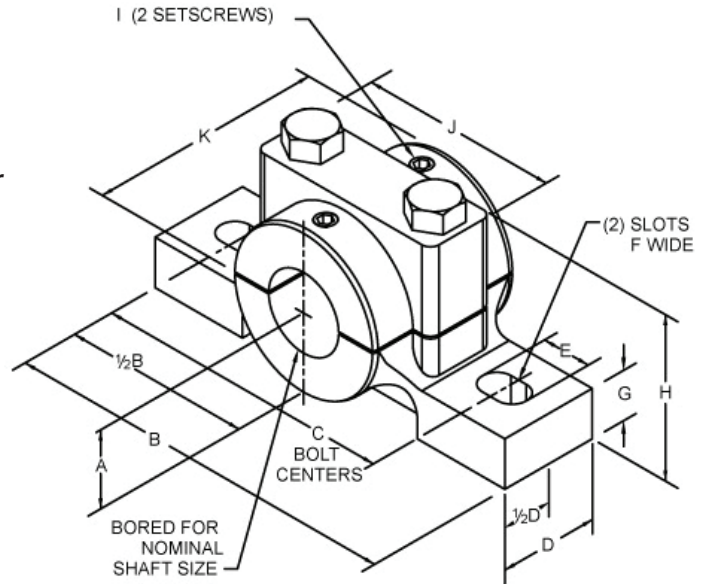
Call 1.920.729.6666 or email [sales@webexinc.com](mailto:sales@webexinc.com)

# STANDARD IDLER MOUNTS

## Rigid Mounts

Rigid mounts are a split-housing type of shaft mount. Unlike the "Quickie Mount" rigid mounts do not allow for any self-alignment. They must be mounted on flat and parallel surfaces or shimmed accordingly.

Rigid mounts support the shaft ends rigidly, reducing natural shaft deflections and bearing side thrust. The top half of the mount can be removed to change rolls without disturbing alignment. These are excellent mounts for applications with heavy loads and rolls with long shafts.



Shaft Nom. Diameter	A	B	C	D	E	F	G	H	I	J	K	Part No.
0.5"	0.5625"	2.75"	2.125"	0.625"	0.3125"	0.375"	0.3125"	1.125"	0.25" - 20	1.4375"	1"	1460-000-A
0.625"	0.8125"	3.75"	2.875"	1"	0.5"	0.333"	0.5"	1.625"	0.25" - 20	2"	1.5"	1461-000-A
0.75"	0.8125"	3.75"	2.875"	1"	0.5"	0.3125"	0.5"	1.625"	0.25" - 20	2"	1.5"	1462-000-A
1"	1.125"	5"	3.75"	1.25"	0.625"	0.4375"	0.625"	2.25"	0.3125" - 18	2.5"	2"	1463-000-A
1.25"	1.375"	6"	4.5"	1.5"	0.75"	0.5625"	0.75"	2.75"	0.375" - 16	3"	2.5"	1464-000-A
1.5"	1.375"	6"	4.5"	1.5"	0.75"	0.5625"	0.75"	2.75"	0.375" - 16	3"	2.5"	1465-000-A



**NORTH, CENTRAL AND  
SOUTH AMERICA**  
Tel +1.920.729.6666  
Fax +1.920.725.9992  
sales@webexinc.com  
www.maxcessintl.com

**EUROPE, MIDDLE EAST  
AND AFRICA**  
Tel +49.6195.7002.0  
Fax +49.6195.7002.933  
sales@maxcess.eu  
www.maxcess.eu

**CHINA**  
Tel +86.756.881.9398  
Fax +86.756.881.9393  
info@maxcessintl.com.cn  
www.maxcessintl.com.cn

**INDIA**  
Tel +91.22.27602633  
Fax +91.22.27602634  
india@maxcessintl.com  
www.maxcess.in

**KOREA, TAIWAN  
AND SE ASIA**  
asia@maxcessintl.com  
www.maxcess.asia

