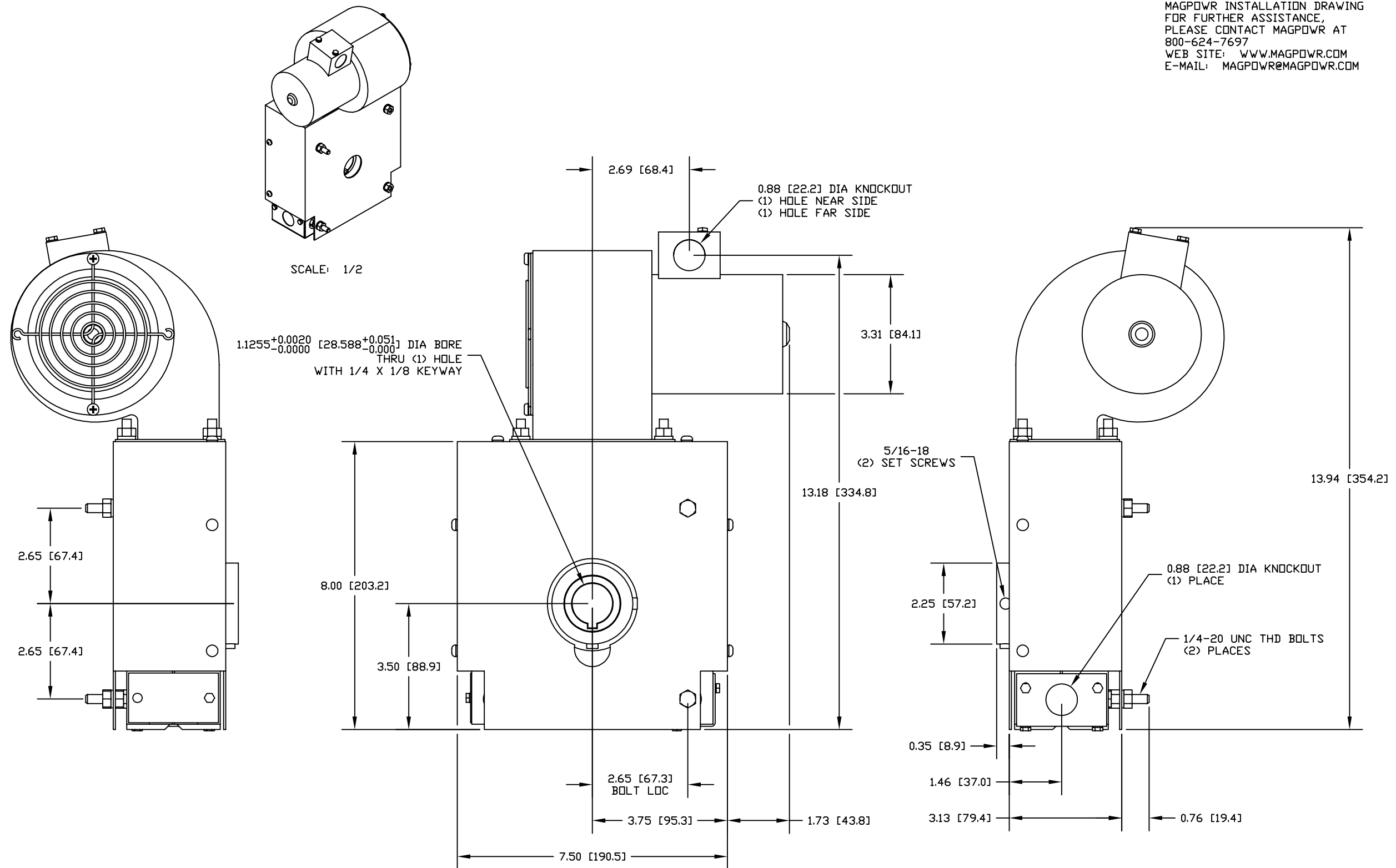


MAGPOWR INSTALLATION DRAWING
FOR FURTHER ASSISTANCE,
PLEASE CONTACT MAGPOWR AT
800-624-7697
WEB SITE: WWW.MAGPOWR.COM
E-MAIL: MAGPOWR@MAGPOWR.COM



DRAWING REFERENCE		NUMBER	
TOLERANCES: UNLESS OTHERWISE SPECIFIED		This drawing is the property of FIFE CORPORATION. It is loaned with the understanding that it may not be reproduced nor may the information contained herein be used for the making of drawings or for manufacturing purposes without the written consent of FIFE CORPORATION.	
INCHES		MILLIMETERS	
.X = ±.1		X = ±.25	
.XX = ±.03		X = ±.8	
.XXX = ±.010		.XX = ±.2	
FRACTIONS = STOCK SIZE		GEOMETRICAL SYMBOLS PER ANSI Y14.5M UNLESS OTHERWISE SPECIFIED	
SURFACE FINISH		STANDARD SHOP PRACTICES AND STANDARD SHOP RUN TOLERANCES PER DRAWING 40400	
EXPOSED 250 AA		MACHINED 125 AA	
DE-BURR ALL EDGES 0.020 [0.5] MAX		LOCATION OK	
SCALE 1/2		SIZE C	
DRAWING NO. B-25A		SHEET NO. 1 OF 1	
REV		REV	

SYM	REVISION	BY	DATE	APVD
BY	DATE			
DRAWN LZ	10/03/13			
CHECKED LZ	10/03/13			
APPROVED LZ	10/03/13			

MAXCESS 222 WEST MEMORIAL ROAD
OKLAHOMA CITY, OK 73114
TEL: 405.755.1600
FAX: 405.755.8425
WWW.MAXCESSINTL.COM

MAGPOWR FIFE TIDLAND

TITLE
MAGPOWR
OUTLINE DIMENSION DRAWING
B SERIES BRAKE
25 LB-FT
AIR COOLED