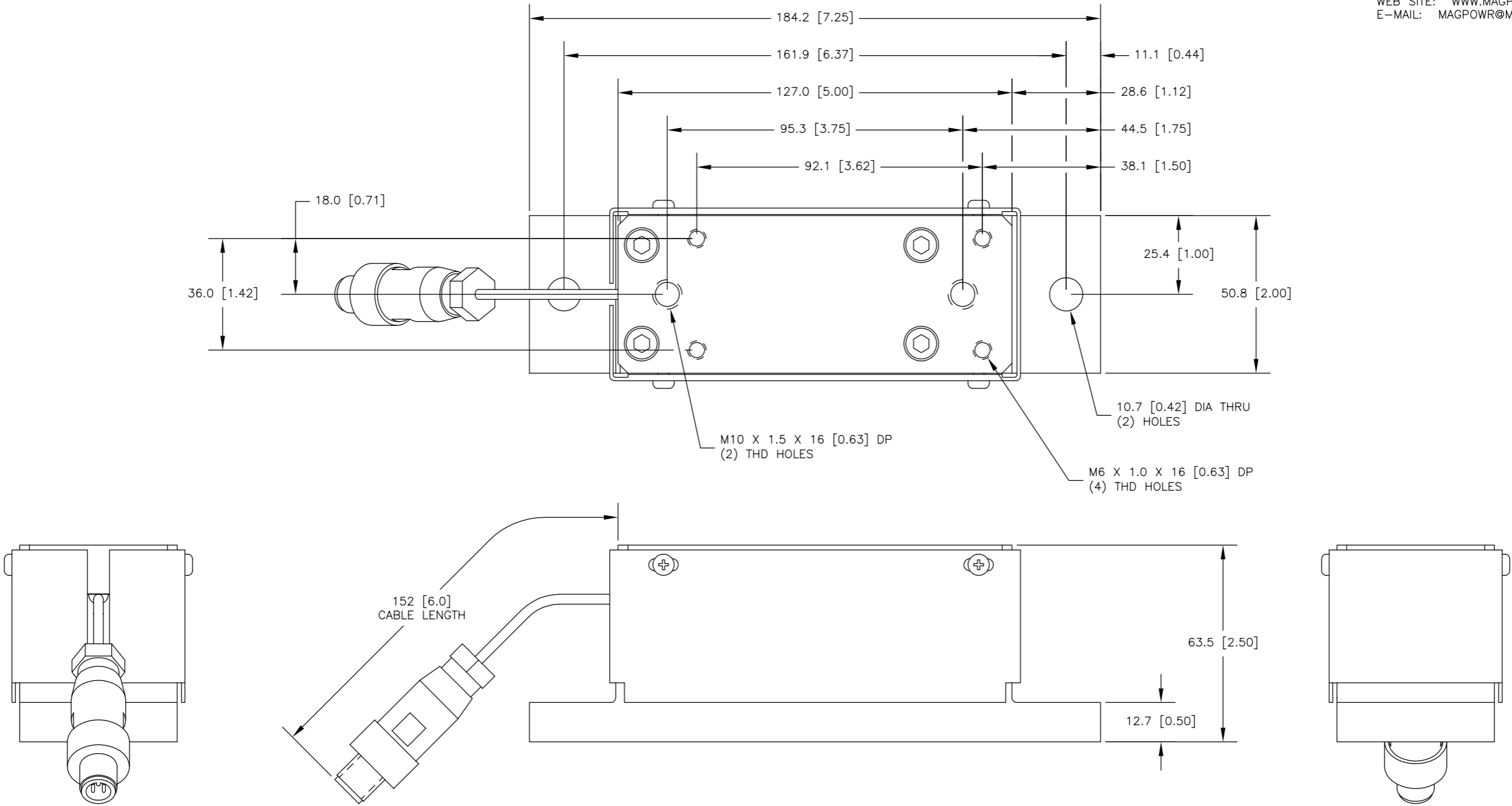

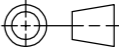


MAGPOWR INSTALLATION DRAWING
FOR FURTHER ASSISTANCE,
PLEASE CONTACT MAGPOWR AT
800-624-7697
WEB SITE: WWW.MAGPOWR.COM
E-MAIL: MAGPOWR@MAGPOWR.COM



		SYM		REVISION		BY DATE		APVD			
		BY		DATE		<div><div><div><div>MAXCESS</div><div>MAGPOWR</div><div></div><div>TIDLAND</div></div></div><div>222 WEST MEMORIAL ROAD OKLAHOMA CITY, OK 73114 TEL: 405.755.1600 FAX: 405.755.8425 WWW.MAXCESSINTL.COM</div></div>					
		DRAWN		LZ						04/10/12	
		CHECKED		JGR						05/03/12	
		APPROVED		JGR						05/03/12	
DRAWING REFERENCE				NUMBER		TITLE					
UNLESS OTHERWISE SPECIFIED		This drawing is the property of FIFE CORPORATION. It is loaned with the understanding that it may not be reproduced nor may the information contained herein be used for the making of drawings or for manufacturing purposes without the written consent of FIFE CORPORATION.				MAGPOWR OUTLINE DIMENSION DRAWING GLOBAL LOAD CELL FOR UNDER PILLOW BLOCK APPLICATIONS, METRIC SIZE A 25 KG					
GENERAL TOLERANCES: ISO 2768-mk GEOMETRICAL SYMBOLS: ISO 1101 SURFACES: ISO 1302				THIRD ANGLE PROJECTION		DIMENSIONS ARE SHOWN IN mm [INCHES] UNLESS OTHERWISE NOTED					
STANDARD SHOP PRACTICES AND STANDARD SHOP TOLERANCES PER DRAWING 201724		DE-BURR ALL EDGES 0.5 [0,020] MAX		LOCATION OK		SCALE 1:1		SIZE A2			
						DRAWING NO. GTSA25-EC12M		SHEET NO. 1 OF 1			
								REV			