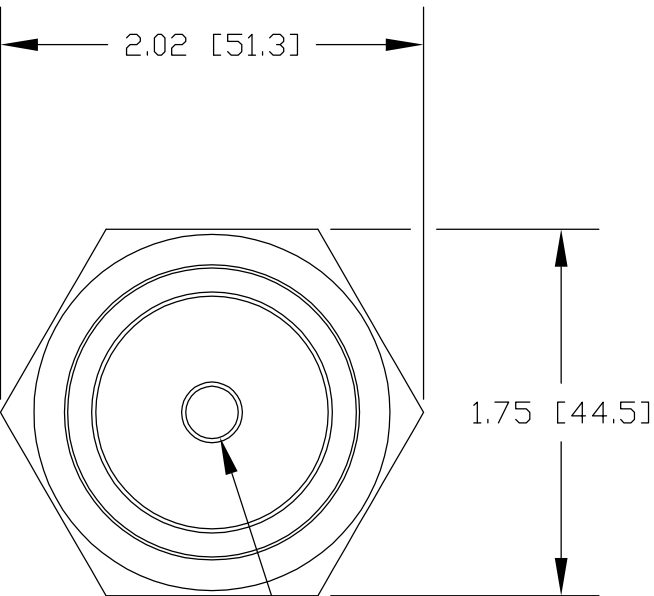
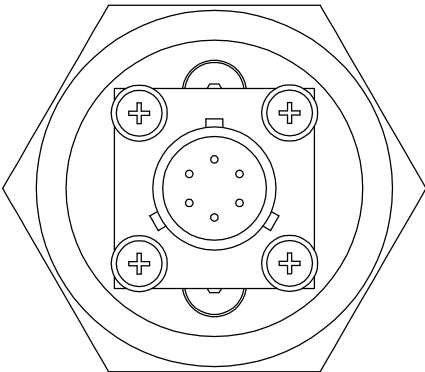
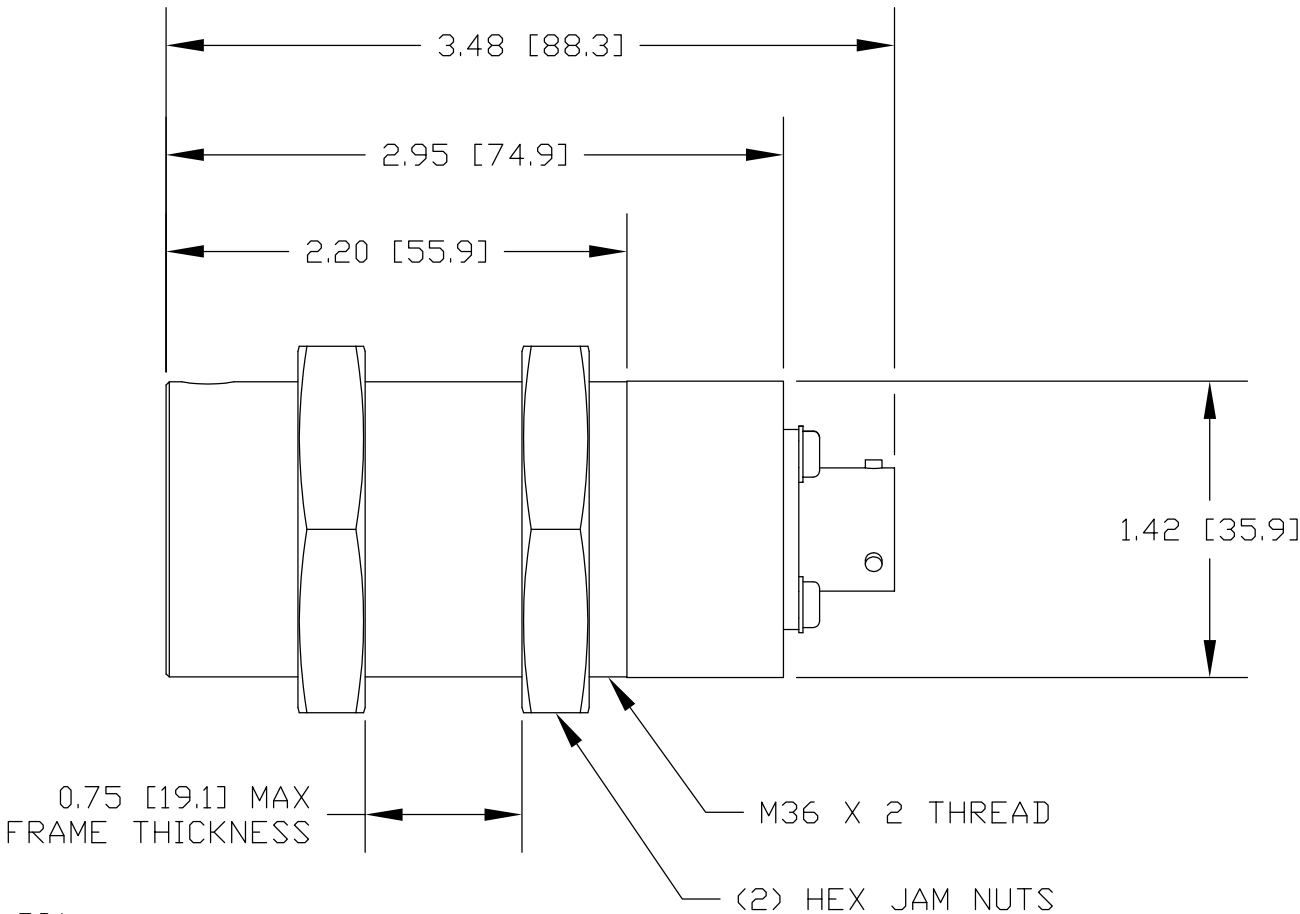




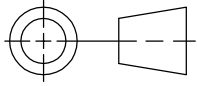


MAGPOWR INSTALLATION DRAWING  
FOR FURTHER ASSISTANCE,  
PLEASE CONTACT MAGPOWR AT  
800-624-7697  
WEB SITE: WWW.MAGPOWR.COM  
E-MAIL: MAGPOWR@MAGPOWR.COM



0.2500<sup>+0.0006</sup><sub>-0.0000</sub> [6.350<sup>+0.015</sup><sub>-0.000</sub>] DIA  
X 0.375 [9.53] DP  
(1) HOLE



				SYM	REVISION				BY	DATE	APVD								
				BY	DATE	<div></div> <p>222 WEST MEMORIAL ROAD (73114-2317) POST OFFICE BOX 26508 OKLAHOMA CITY, OK 73126-0508, U.S.A. PHONE: (405) 755-1600 FAX: (405) 755-8425</p>													
				DRAWN	LZ							08/16/10							
				CHECKED	LZ							06/11/12							
				APPROVED	LZ	06/11/12	<p>TITLE</p> <p>MAGPOWR</p> <p>OUTLINE DIMENSION DRAWING</p> <p>LOW TENSION LOAD CELL FOR SINGLE</p> <p>STRAND APPLICATIONS, SPECIAL</p> <p>500 GRAMS</p>												
						THIRD ANGLE PROJECTION													
				DIMENSIONS ARE SHOWN IN INCHES [mm] UNLESS OTHERWISE NOTED															
TOLERANCES: UNLESS OTHERWISE SPECIFIED				This drawing is the property of FIFE CORPORATION. It is loaned with the understanding that it may not be reproduced nor may the information contained herein be used for the making of drawings or for manufacturing purposes without the written consent of FIFE CORPORATION.															
INCHES		MM																	
.X = ±.1		X = ±2.5																	
.XX = ±.03		.X = ±.8																	
.XXX = ±.010		.XX = ±.2																	
FRACTIONS = STOCK SIZE				GEOMETRICAL SYMBOLS PER ANSI Y14.5M UNLESS OTHERWISE SPECIFIED															
SURFACE FINISH				STANDARD SHOP PRACTICES AND STANDARD SHOP RUN TOLERANCES PER DRAWING 40400				LOCATION		SCALE		SIZE		DRAWING NO.		SHEET NO.		REV	
EXPOSED 250 AA		MACHINED 125 AA						OK		FULL		B		LC-500GS1		1 OF 1			
DE-BURR ALL EDGES 0.020 [0.5] MAX																			