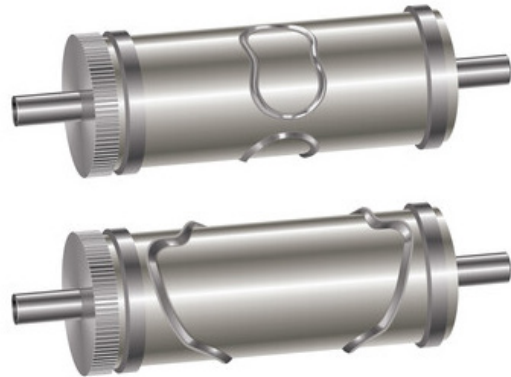




The Right Die for the Toughest Nonwoven Applications

The RD300 NW Solid Rotary Die is up to the challenge of cutting nonwoven material with the precision you need. Using high-chromium, through-hardened, heat-treated D2 steel and a proprietary machine finishing process, the RD300 NW offers industry-leading precision and the tightest tolerances in the market.

With decades of knowledge in the nonwoven market through our complementary brands of Fife, Tidland, and Webex, we understand your most challenging nonwoven



applications. This allows us to create custom blade profiles with unmatched consistency and repeatability, providing the most accurate solution for your application.

Key Features & General Specifications



- Ideal for metal-to-metal, kiss cut, or multi-level applications
- Custom-engineered blade profiles for maximum repeatability
- 100% machine finished
- Expertise in versatile applications, product durability, and material flexibility
- Extend die life and owning cost by resharpener
- Fastest D2 steel die delivery time in the industry

Material:

High-chromium steel
Through-hardened to 58-62 HRC

Special Options:

Material Movement options available

Detailed technical specifications:

For detailed technical specifications (blade angles, steel type, treatment options, and more), contact a RotoMetrics customer service representative

GLOBAL HEADQUARTERS & AMERICAS

P +1-844-MAXCESS
F +1-405-755-8425
sales@maxcessintl.com

maxcessintl.com

EUROPE & MIDDLE EAST

P +49-6195-7002-0
F +49-6195-7002-933
sales@maxcess.eu

maxcess.eu

ASIA PACIFIC

P +86-756-881-9398
F +86-756-881-9393
info@maxcessintl.com.cn

maxcessintl.com.cn



RELATED PRODUCTS ASK US ABOUT:

RotoMetrics Vacuum Anvils

Blade Sheeting Tools

Fife D-MAX Enhanced Web Guiding Controller