



Fife Corporation

P.O. Box 26508, Oklahoma City, OK 73126, USA
Phone: 405.755.1600 / Fax: 405.755.8425
www.fife.com / E-mail: fife@fife.com

MAINTENANCE INSTRUCTIONS SYMAT 50 OFFSET PIVOT GUIDE RACEWAY BASE ASSEMBLY

SYMAT 50 OFFSET PIVOT GUIDE

NOTES:

1. Lubricate O.D. of item 13 (spherical bearing) and the inside face of item 12 (carrier block) with molybdenum disulfide antiseize lubricant at assembly.
2. See Figure Sheet 3-323 for disassembly of spherical bearing and carrier block.
3. Place beveled side of item 22 (two actuator stop washers) towards bearings on item 4 (actuator bracket assembly) when assembling these parts.

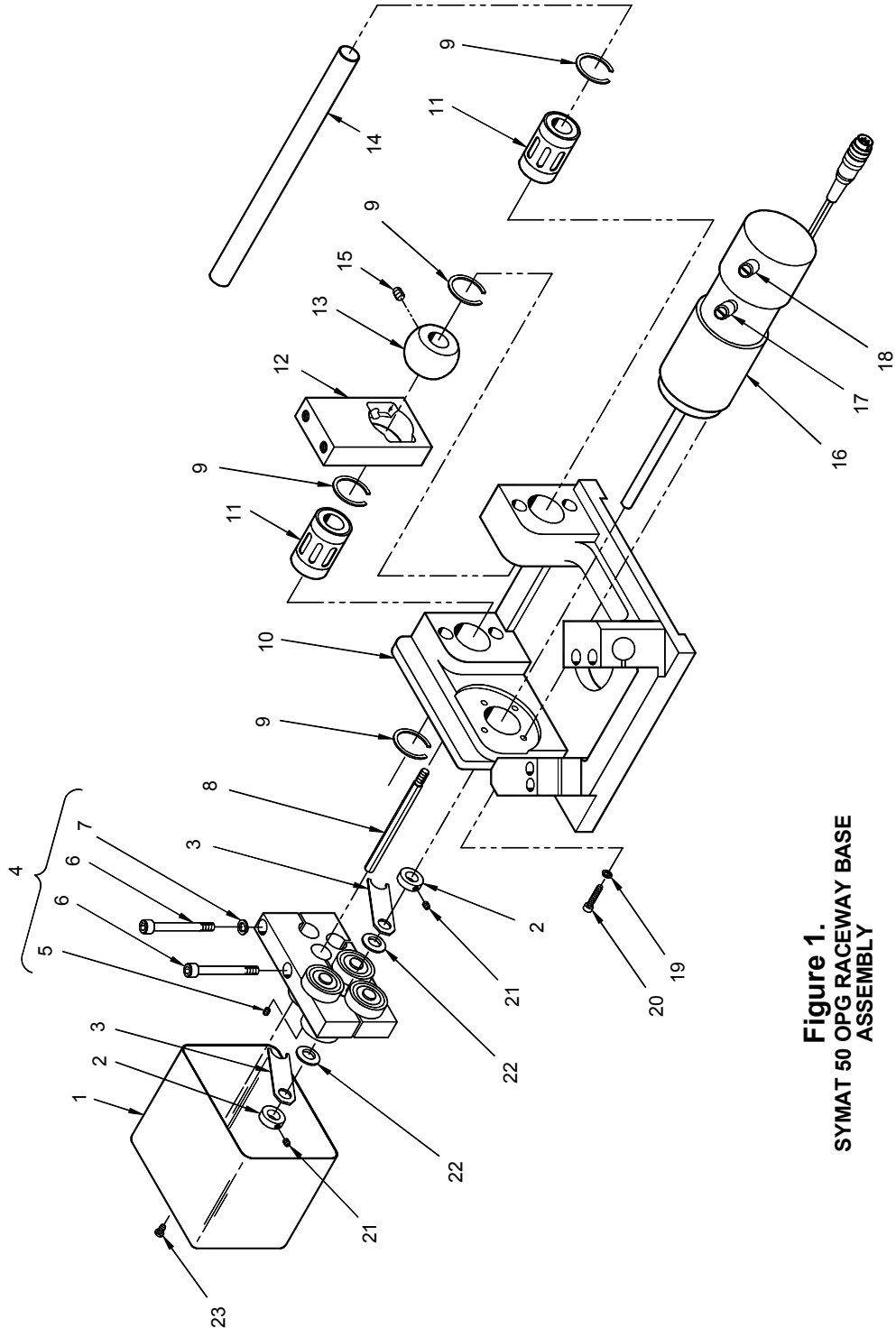


Figure 1.
SYMAT 50 OPG RACEWAY BASE
ASSEMBLY



MAINTENANCE INSTRUCTIONS SYMAT 50 OFFSET PIVOT GUIDE RACEWAY BASE ASSEMBLY

Parts List

ITEM NO	PART DESCRIPTION	PART NUMBER	ITEM QTY
—	Raceway Assembly, SYMAT 50-OPG, 1.57 inch stroke, 1.3 AMP Motor	87576-001	—
—	Raceway Assembly, SYMAT 50-OPG, 1.00 inch stroke, 1.3 AMP Motor	87576-002	—
—	Raceway Assembly, SYMAT 50-OPG, 0.50 inch stroke, 1.3 AMP Motor	87576-003	—
1	Actuator Cover	87575-001	1
2	Shaft Collar	78609-001	2
3	Actuator Brake	78608-001	2
4	Actuator Bracket Assembly	78603-001	1
5	Flat Point Socket Set Screw, M4 X 4 mm long	91016-001	1
6	Socket Head Cap Screw, M6 X 4 mm long	26707-012	2
7	Lockwasher, 6 mm	26715-004	1
8	Hex Standoff	78607-002	1
9	Retaining Ring, External	54324-004	4
10	Base	84787-001	1
11	Super Ball Bushing, Sealed	90022-002	2
12	Carrier Block	87452-001	1
13	Spherical Bearing	46815-001	1
14	Racerod	78797-003	1
15	Hex Socket Set Screw, Cup Point, M10 X 10 mm long	90252-001	1
16	Servo Motor 1.3 AMP (with Cable and Connector)	85626-001	1
17	Brush, Motor	45604-007	1
18	Brush, Tach	45604-008	1
19	Lockwasher, 5 mm	26715-003	4
20	Socket Head Cap Screw, M5 X 20 mm long	90870-008	4
21	Hex Socket Set Screw, M5 X 5 mm long	78610-001	2
22	Flatwasher, 10 mm	46861-001	2
23	Hex Socket (Low Head) Cap Screw, M5 X 8 mm long	91018-002	1

Items are indented in the bill of material to indicate their relationship to a higher assembly. All Items belonging to an assembly will be listed directly under that assembly and will be indented one column to the right.