



MAGPOWR

TS Load Cells are extremely accurate devices used to measure tension in any unwind, rewind or intermediate web processing application. Their low-profile design minimizes space requirements and maximizes potential web width.

Available in both imperial and metric models, the TS Load cells offer flexibility with a diverse range of mounting styles and coupling options. Ruggedly constructed with mechanical overload stops in both force directions, they eliminate sensor damage and the need to recalibrate after extreme overloads. In addition, our full Wheatstonebridge strain-gage arrangement on each load cell delivers the most accurate means of measuring web tension, with the least amount of drift from temperature change.



Adding two new ratings (150 kg and 330 lbs) and a standard IP67 certification, we now cover a large range of load cells from 2 to 250 kg (5 to 500 lbs). These additions, along with recent upgrades to the 12 mm connector and silver powder coating, make these load cells the most versatile, accurate and inviting in the industry.

GENERAL SPECIFICATIONS

Product Name TS Load Cells	Combined Non-linearity & Hysteresis 0.5% of full scale maximum
Gage Resistance 350 ohms nominal	Repeatability 0.2% of full scale maximum
Excitation Voltage 10 vdc maximum	Deflection at Full Load 0.41 mm (0.016 inch) maximum
Output Signal 21 mvdc maximum per sensor at full load rating	Temperature Effect on Zero 0.02% of rating per °C
Operating Temperature -30 to 80°C	Certifications CE IP67
Ratings 5, 25, 50, 150, 330 and 500 lbs 2, 10, 25, 75, 150 and 250 kg	

KEY FEATURES

- Multiple mounting and coupling options for maximum flexibility
- Capable of handling loads from 2 to 250 kg (5 to 500 lbs)
- Ruggedly constructed for long life and dependability
- Mechanical overload stops for protection under severe overloads
- Full Wheatstonebridge design for measurement accuracy and lowest temperature drift
- Coupling allows for live or dead shaft applications

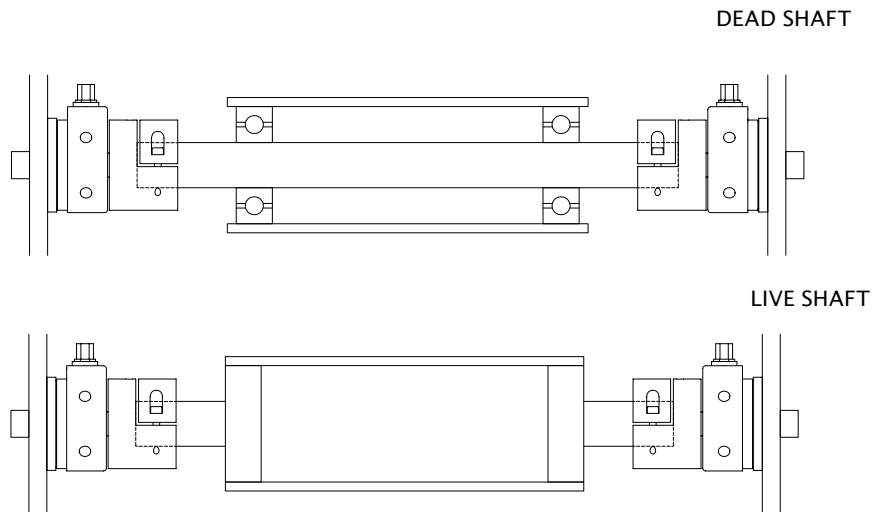
MODEL NUMBER

TS	150	F	C	EC12	M
Load Cell Model	Load Rating	Mounting Type	Coupling Type	12 mm connector	Metric or Imperial
		S- Stud F- Flange P- Pillow Block	C- Split Coupling R- In-Roll W- Wire Pulley		Blank- Imperial dimensions and load rating in pounds M- Metric dimensions and load rating in kg

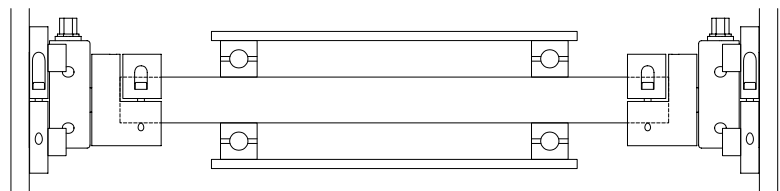
MOUNTING OPTIONS

STUD MOUNT

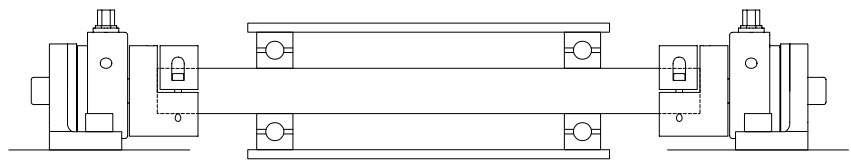
NOTE: All TS Load Cells can be used in dead shaft and live shaft applications as shown. Removal of anti-rotation screw required for live shaft



FLANGE MOUNT



PILLOW BLOCK MOUNT



NORTH, CENTRAL AND SOUTH AMERICA
 Tel +1.405.755.1600
 Fax +1.405.755.8425
 sales@maxcessintl.com
 www.maxcessintl.com

INDIA
 Tel +91.22.27602633
 Fax +91.22.27602634
 india@maxcessintl.com
 www.maxcess.in

EUROPE, MIDDLE EAST AND AFRICA
 Tel +49.6195.7002.0
 Fax +49.6195.7002.933
 sales@maxcess.eu
 www.maxcess.eu

JAPAN
 Tel +81.43.421.1622
 Fax +81.43.421.2895
 japan@maxcessintl.com
 www.maxcess.jp

CHINA
 Tel +86.756.881.9398
 Fax +86.756.881.9393
 info@maxcessintl.com.cn
 www.maxcessintl.com.cn

KOREA, TAIWAN AND SE ASIA
 asia@maxcessintl.com
 maxcessintl.asia