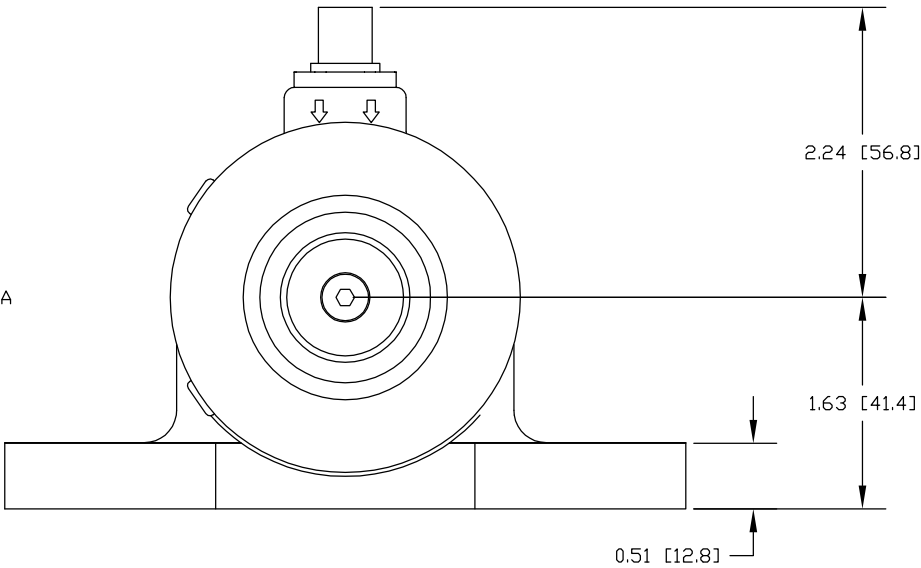
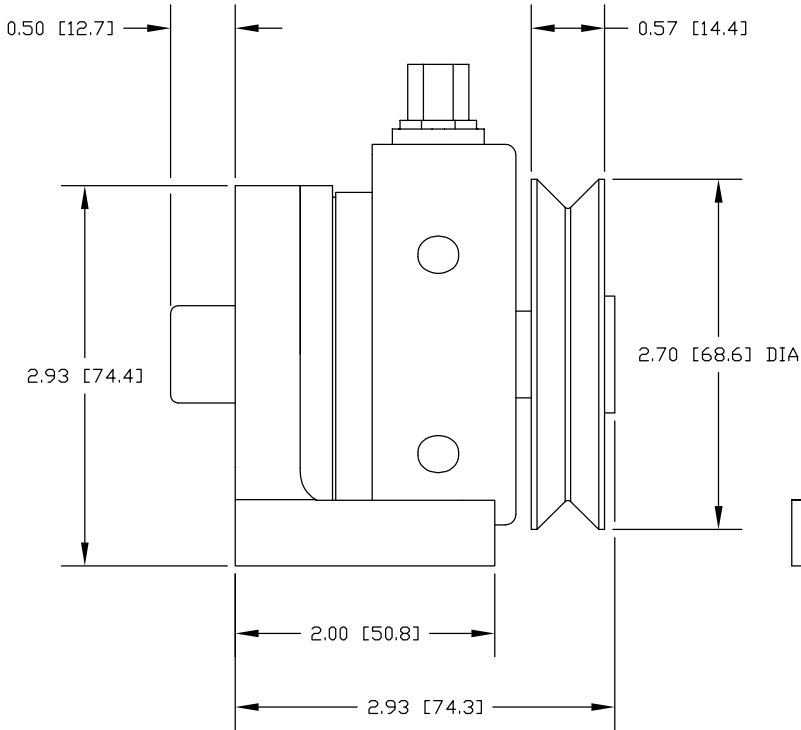
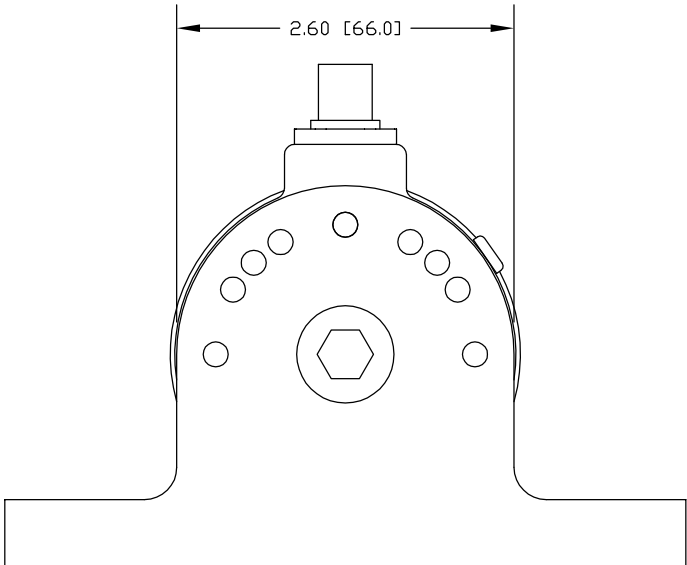
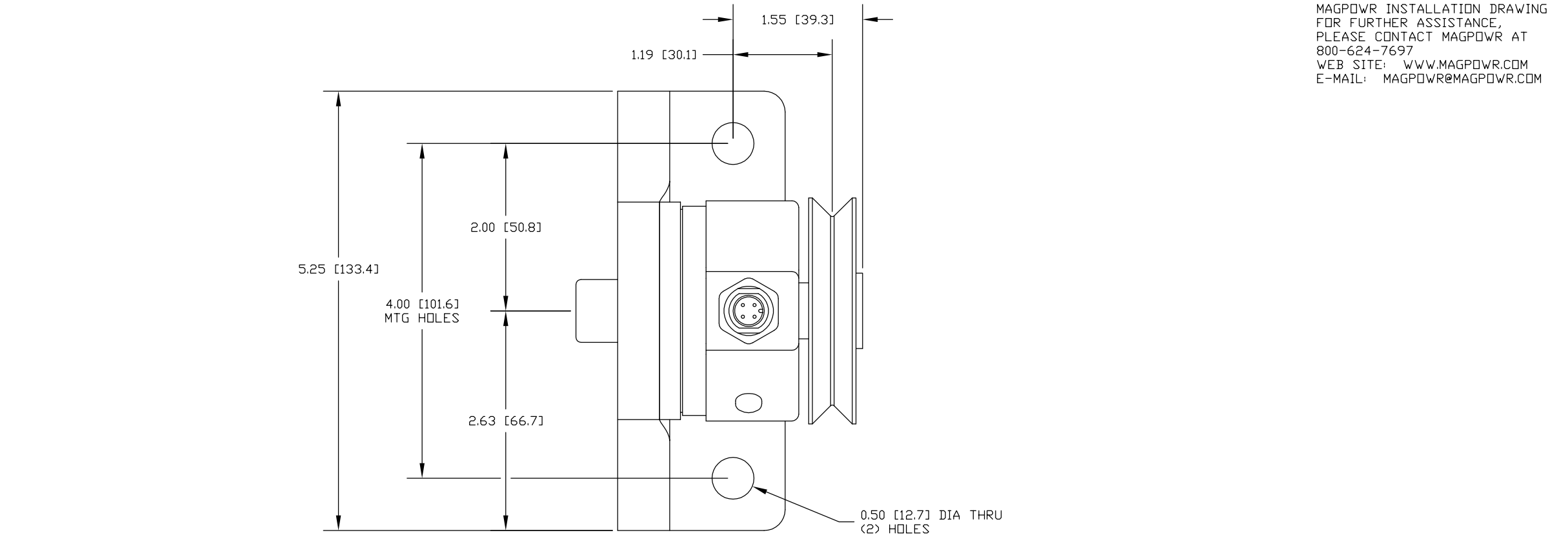



MAGPOWR INSTALLATION DRAWING  
FOR FURTHER ASSISTANCE,  
PLEASE CONTACT MAGPOWR AT  
800-624-7697  
WEB SITE: WWW.MAGPOWR.COM  
E-MAIL: MAGPOWR@MAGPOWR.COM



				LZ		04/04/12		<div>MAXCESS</div> <div>ORLAHOMA CITY, OK 73114</div> <div>TEL: 405.755.1600</div> <div>FAX: 405.755.8425</div> <div>WWW.MAXCESSINTL.COM</div> <div>MAGPOWR</div> <div>FDI</div> <div>TIDLAND</div>									
				CHECKED		JGR				04/05/12							
				APPROVED		JGR				04/05/12							
DRAWING REFERENCE				NUMBER				TITLE									
TOLERANCES: UNLESS OTHERWISE SPECIFIED				This drawing is the property of FIFE CORPORATION. It is loaned with the understanding that it may not be reproduced nor may the information contained herein be used for the making of drawings or for manufacturing purposes without the written consent of FIFE CORPORATION.				<div>MAGPOWR</div> <div>OUTLINE DIMENSION DRAWING</div> <div>WIRE PULLEY MODEL LOAD CELL</div> <div>PILLOW BLOCK</div> <div>500 LB</div>									
INCHES X = ±.1 XX = ±.03 XXX = ±.010		MM X = ±.25 X = ±.8 .XX = ±.2		<div></div> <div>THIRD ANGLE PROJECTION</div> <div>DIMENSIONS ARE SHOWN IN INCHES [mm] UNLESS OTHERWISE NOTED</div>													
FRACTIONS = STOCK SIZE																	
SURFACE FINISH				GEOMETRICAL SYMBOLS PER ANSI Y14.5M UNLESS OTHERWISE SPECIFIED													
EXPOSED 250 AA		MACHINED 125 AA		STANDARD SHOP PRACTICES AND STANDARD SHOP RUN TOLERANCES PER DRAWING 40400		LOCATION OK		SCALE FULL		SIZE C		DRAWING NO. TS500PW-EC12		SHEET NO. 1 OF 1		REV	
DE-BURR ALL EDGES 0.020 [0.5] MAX																	