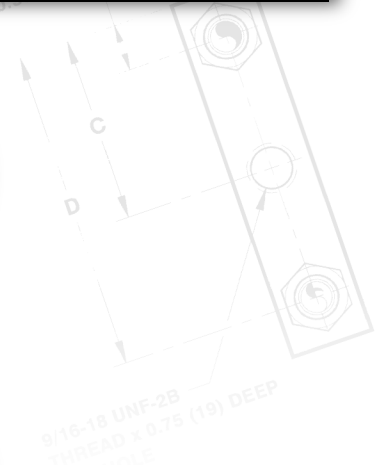
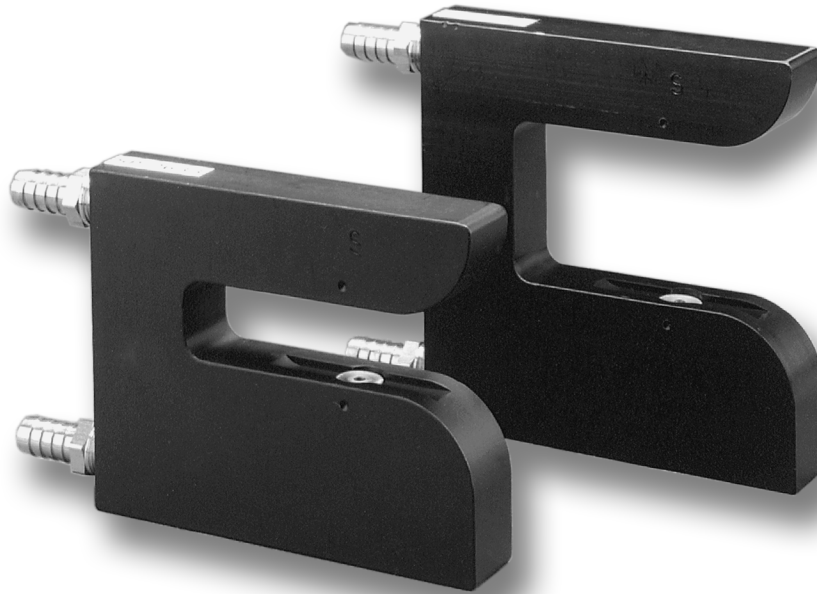




A Maxcess  
International  
Company

# SP-2317, SP-2633 Pneumatic Sensors



**R**uggedly built for the most physically demanding applications, these sensors are used to accurately guide most types of materials, especially opaque webs and clear films. The two sensors are basically the same, differing only in overall height and sensing gap. The SP-2317 has a sensing gap of 2.25" (57 mm), the widest of any standard Fife pneumatic sensor, while the SP-2633 has a sensing gap of 1.0" (25 mm).

These sensors are designed for use with Fife pneumohydraulic power units and control systems. Standard sensor bodies are black anodized aluminum, with optional corrosion-resistant assemblies available. Both sensors are intrinsically safe, capable of reliable operation in hazardous areas where combustible gases are present.

## SPECS

### General Specifications

**Part Number:**

SP-2317, SP-2633  
Pneumatic Sensors

**Air Pressure:**

SP-2317: 20 to 35 in. water  
SP-2633: 12 to 17 in. water

**Proportional Band:**

SP-2317: 0.2" (5 mm)  
SP-2633: 0.13" (3.3 mm)

**Weight:**

SP-2317: 8 oz (225 grams)  
SP-2633: 9 oz (252 grams)

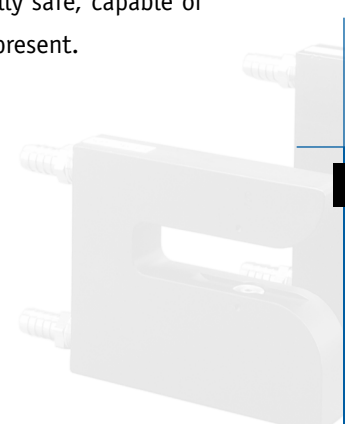
**Temperature Range:**

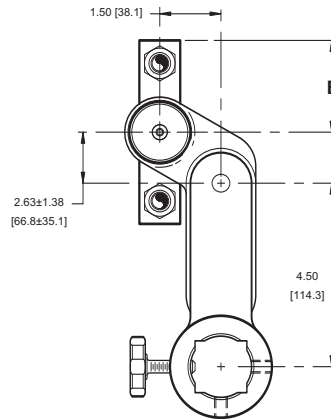
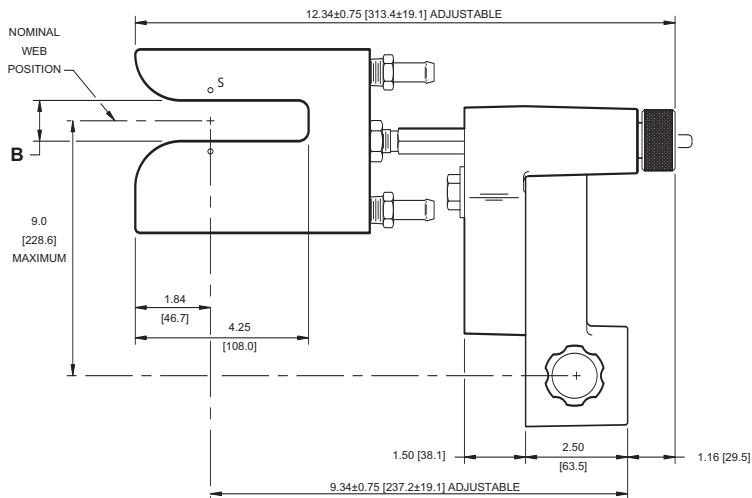
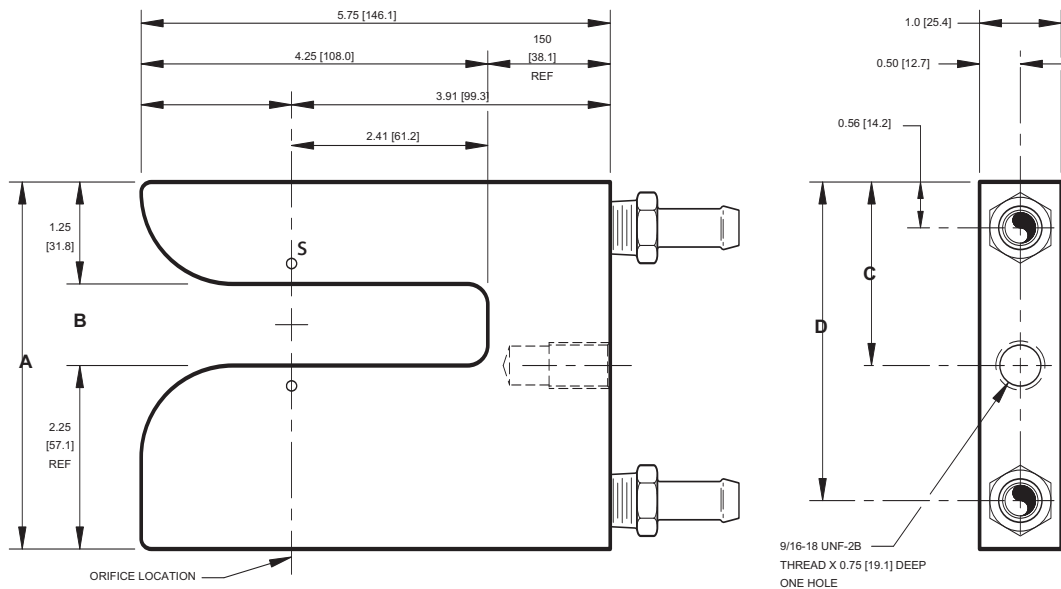
32° to 180° F (0° to 82 °C)

### Key Features:

- Larger, more rugged sensors used for guiding all varieties of webs, especially opaque and clear films.
- Non-corrosive body construction for long-lasting, reliable performance.
- Intrinsically safe; usable in hazardous areas where combustible gases are present.
- Durable and clog-resistant.
- Flexible mounting and positioning assemblies ensure quick and easy installation.
- Electrostatic discharge protected (electronic sensors only).

KEY FEATURES





**NOTES**

1. Sensor shown with M-6360 F.A.M.B.
2. All dimensions in parenthesis are millimeters.

Model Number	A	B	C	D	E
SP-2317	5.75" (146 mm)	2.25" (57 mm)	2.88" (73 mm)	5.16" (131 mm)	2.88" (73 mm)
SP-2633	4.5" (114 mm)	1.00" (25 mm)	2.25" (57 mm)	3.91" (99 mm)	2.25" (57 mm)



A Maxcess International Company

**Fife Corporation**  
 222 West Memorial Road  
 Oklahoma City, OK 73114, USA  
 Phone: 405-755-1600  
 Fax: 405-755-8425  
 E-mail: fife@fife.com  
 Web: www.fife.com

**Fife-Tidland GmbH**  
 Fifestrasse 1, D-65779  
 Kelheim/Ts., Germany  
 Phone: (49) 6195-7002-0  
 Fax: (49) 6195-7002-933  
 E-mail: info@maxcess.de

**Maxcess Asia**  
 300 Orchard Road, No. 15-05  
 Orchard Towers  
 Singapore 238875  
 Phone: (65) 6834-1998  
 Fax: (65) 6835-4818  
 E-mail: jwongmax@singnet.com.sg



MAXCESS INTERNATIONAL COMPANIES



**GUIDING · INSPECTION**  
 1-800-639-3433  
 (405) 755-1600



**TENSION CONTROL**  
 1-800-MAGPOWR  
 (405) 755-1600



**SLITTING · WINDING**  
 1-800-426-1000  
 (360) 834-2345