



# DP-20 PLUS WEB GUIDE CONTROLLER INSTALLATION INSTRUCTIONS





# DP-20 PLUS Installation Instructions

## Table of Contents

1	DP-20 PLUS PANEL MOUNT	3
2	DP-20 PLUS WALL MOUNT BRACKETS	4
2.1	Wall Mount Bracket Installation .....	5
2.2	DP-30 to DP-20 PLUS Mounting Bracket .....	6
3	SPECIFICATIONS	7
	Inputs and Outputs .....	7
	Certifications and Compatibility with Industrial Environments .....	8
	Maximum Cable Lengths .....	8
4	SERVICE	9

## Table of Figures

Figure 1 - DP-20 PLUS Front and Side Views (Panel Mount shown with 90° connector option) .....	3
Figure 2 - DP-20 PLUS Rear View (Panel Mount).....	3
Figure 3 - DP-20 PLUS Wall Mount Bracket Dimensions (Part Number 69930-001).....	4
Figure 4 - Wall Mount Bracket (Rear and Bottom Views) .....	5
Figure 5 - DP30 to DP-20 PLUS Bracket (Part Number 69631-001).....	6

# DP-20 PLUS

## Installation Instructions

### 1 DP-20 PLUS Panel Mount

- 1) Prior to installing, remove Holding Screws and Slide Bars (2) and place DP-20 into metal cutout. Use dimensions in Figures 1 and 2 for cutout.
- 2) After placement in cutout, re-install Slide Bars and Holding Screws. Tighten Holding Screws until the DP-20 is secure in the panel.
- 3) NOTE: All dimensions and specifications are in mm [inches] unless specified otherwise.

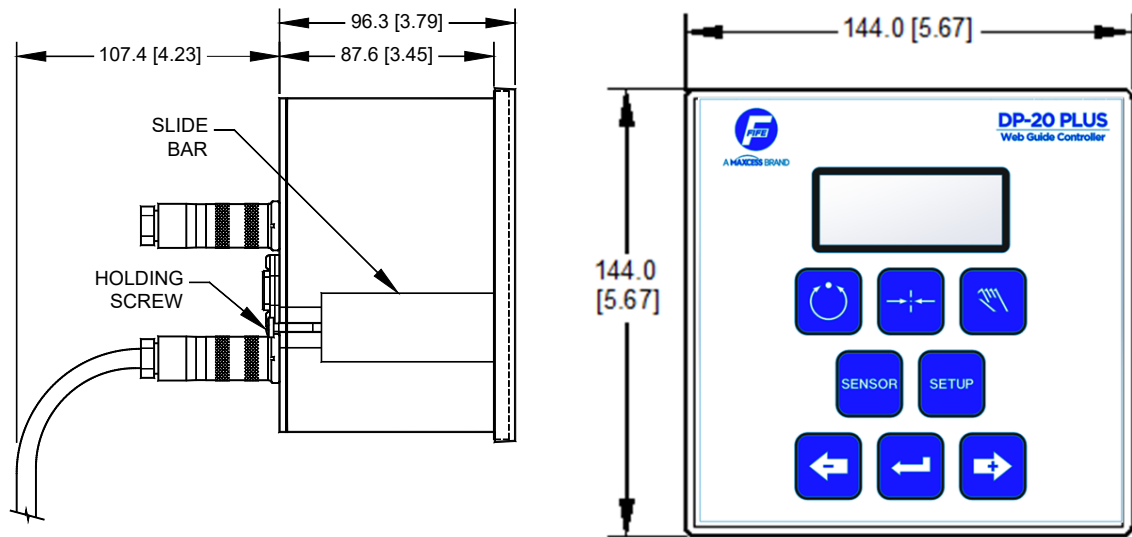


Figure 1 - DP-20 PLUS Front and Side Views (Panel Mount shown with 90° connector option)

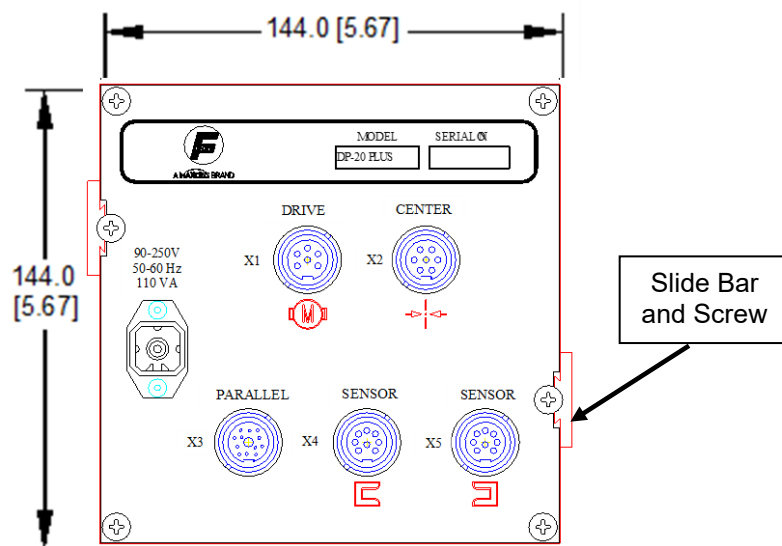


Figure 2 - DP-20 PLUS Rear View (Panel Mount)

# DP-20 PLUS Installation Instructions

## 2 DP-20 PLUS Wall Mount Brackets

The wall mount bracket dimensions for new DP-20 PLUS users are provided below in Figure 3. Bracket Part Number is 69930-001. The bracket dimensions and Part Number for clients transitioning from DP-30 to DP-20 PLUS are provided in Figure 5.:

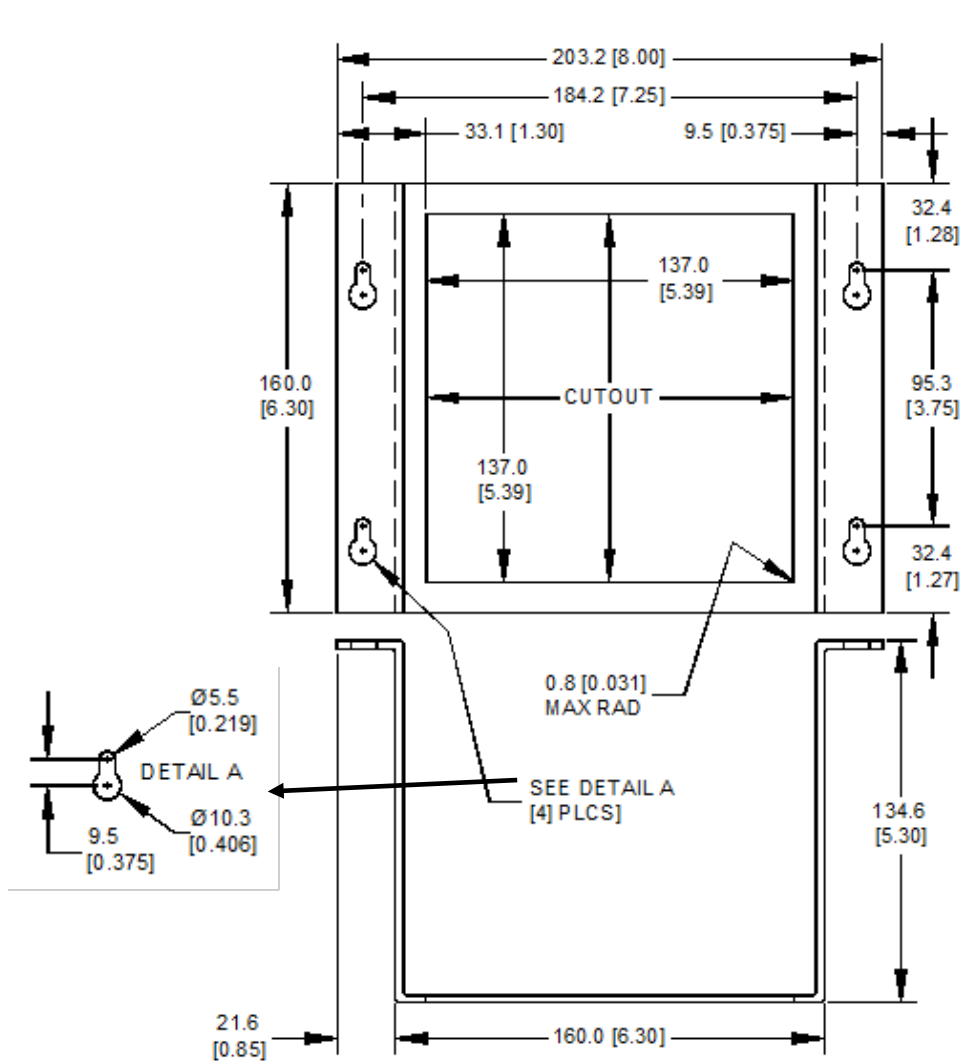


Figure 3 - DP-20 PLUS Wall Mount Bracket Dimensions (Part Number 69930-001)

# DP-20 PLUS

## Installation Instructions

### 2.1 Wall Mount Bracket Installation

- 1) Prior to installing remove Holding Screws and Slide Bars and place DP-20 into applicable bracket.
- 2) After placement re-install Slide Bars and Holding Screws. Tighten Holding Screws until the DP-20 is secure in the bracket.

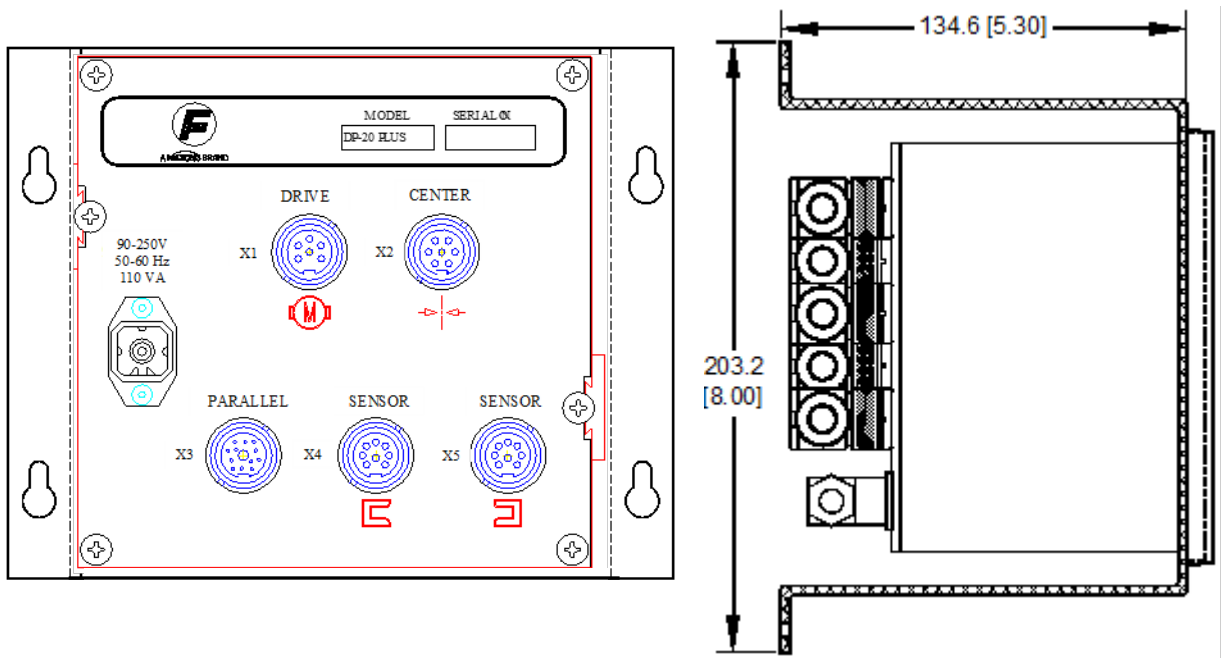
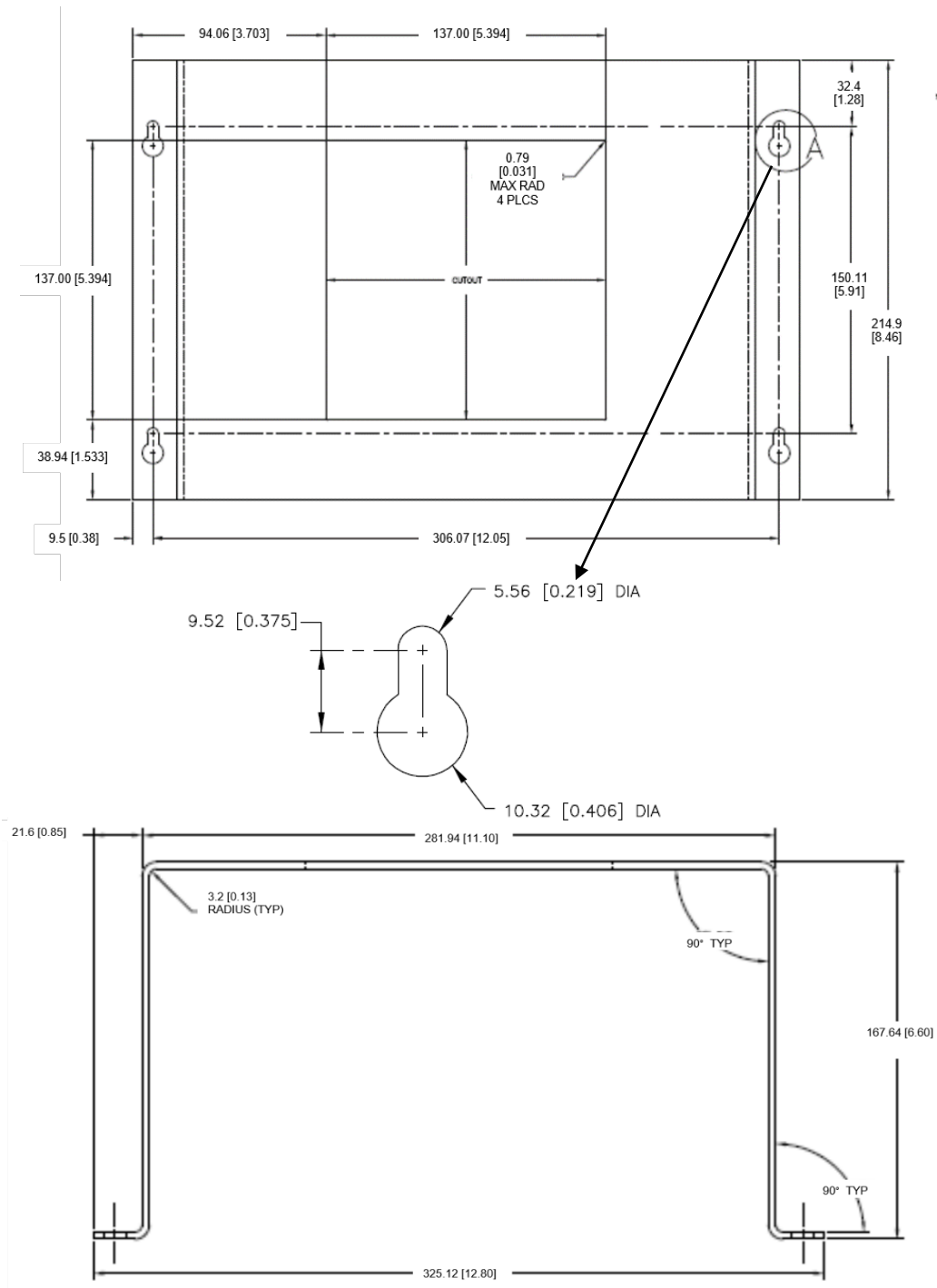


Figure 4 - Wall Mount Bracket (Rear and Bottom Views)

**NOTE – Wall mount bracket shown with and without 90° connectors.**

# DP-20 PLUS Installation Instructions



**Figure 5 - DP30 to DP-20 PLUS Bracket (Part Number 69631-001)**

## 2.2 DP-30 to DP-20 PLUS Mounting Bracket

This bracket (Part No. 69631-001) can be ordered by customers who are transitioning from DP-30 to DP-20 PLUS.



# DP-20 PLUS

## Installation Instructions

### 3 Specifications

#### General

Universal Input Line Voltage Range	- 90 VAC To 250 VAC
Input Line Frequency	- 50 To 60 Hz
Power consumption	- 180 VA
Operating Ambient Temp.	- 0° to 50°C (32° to 122°F)
Dimensions	- Height 144 mm (5.67") Width 144 mm (5.67") Depth 103 mm (4.06") (without cables attached)
Approximate Weight	- 1.6 Kg (3.5 lbs)

#### Inputs and Outputs

Electromechanical Actuator	- 3.5 A, 46 V maximum
Hydraulic Servo Valve	- $\pm 50$ mA With or without Lockout Valve (Max 39 W at 24 V or 48 V)
MPA (with MPA Lockout Signal)	- $\pm 10$ mA
Servo Center	- Analog Inductive type
Sensor Input (2) Individually Programmable	- Max Input $\pm 20$ mA 0 to 10 mA (Preferred)
Parallel port	- Six Digital Inputs Low Level: 0 – 0.9 V High level: 4.6 – 24 V, max 6 mA Two open collector outputs connected to ground, max 30 V (NPN open collector) 55 mA at 1.6 V Switchable Logic Polarity +12V / +15V available to port for input reference
Supply to Sensors	+12V or +15V $\pm 5\%$ , 600 mA (+15V only for legacy FNA sensors) See Quick Start Guide
Supply to Accessories	-12V $\pm 5\%$ , 100 mA



# DP-20 PLUS

## Installation Instructions

### Certifications and Compatibility with Industrial Environments

- |                                |   |  |
|--------------------------------|---|--|
| Product Certification          | - | CE<br>UL/CSA/IEC 61010-1   |
| Protection Class               | - | Designed to meet IP 54   |
| <b>Industrial Environments</b> |   | Indoor Use<br>Altitude <2000 Meters<br>Relative Humidity up to 95%<br>Pollution Degree 2 |

### Maximum Cable Lengths

- |   |   |               |
|---|---|---------------|
| Sensors (Except SE-26A)                   | - | 50 m (165 ft) |
| SE-26A Sensor<br>(SE-26 is not supported) | - | 25 m (82 ft)  |
| Parallel Port                             | - | 50 m (165 ft) |
| Servo-Center                              | - | 50 m (165 ft) |
| Servo Valve                               | - | 50 m (165 ft) |
| Lockout Valve                             | - | 50 m (165 ft) |
| Actuator                                  | - | 14 m (46 ft)  |





# DP-20 PLUS

## Installation Instructions

### 4 Service

If you have any questions about one of our products or need to speak with a Customer Service representative, please use the contact information below.



GLOBAL HEADQUARTERS  
AND AMERICAS  
Tel +1.844.MAXCESS  
Fax +1.360.834.5865  
sales@maxcessintl.com  
www.maxcessintl.com

EUROPE, MIDDLE EAST  
AND AFRICA  
Tel +49.6195.7002.0  
Fax +49.6195.7002.933  
sales@maxcess.eu  
www.maxcess.eu

CHINA  
Tel +86.756.881.9398  
Fax +86.756.881.9393  
info@maxcessintl.com.cn  
www.maxcessintl.com.cn

INDIA  
Tel +91.22.27602633  
Fax +91.22.27602634  
india@maxcessintl.com  
www.maxcess.in

JAPAN  
Tel +81.43.421.1622  
Fax +81.43.421.2895  
japan@maxcessintl.com  
www.maxcess.jp

KOREA, TAIWAN,  
AND SE ASIA  
asia@maxcessintl.com  
www.maxcess.asia

© 2020 Maxcess

