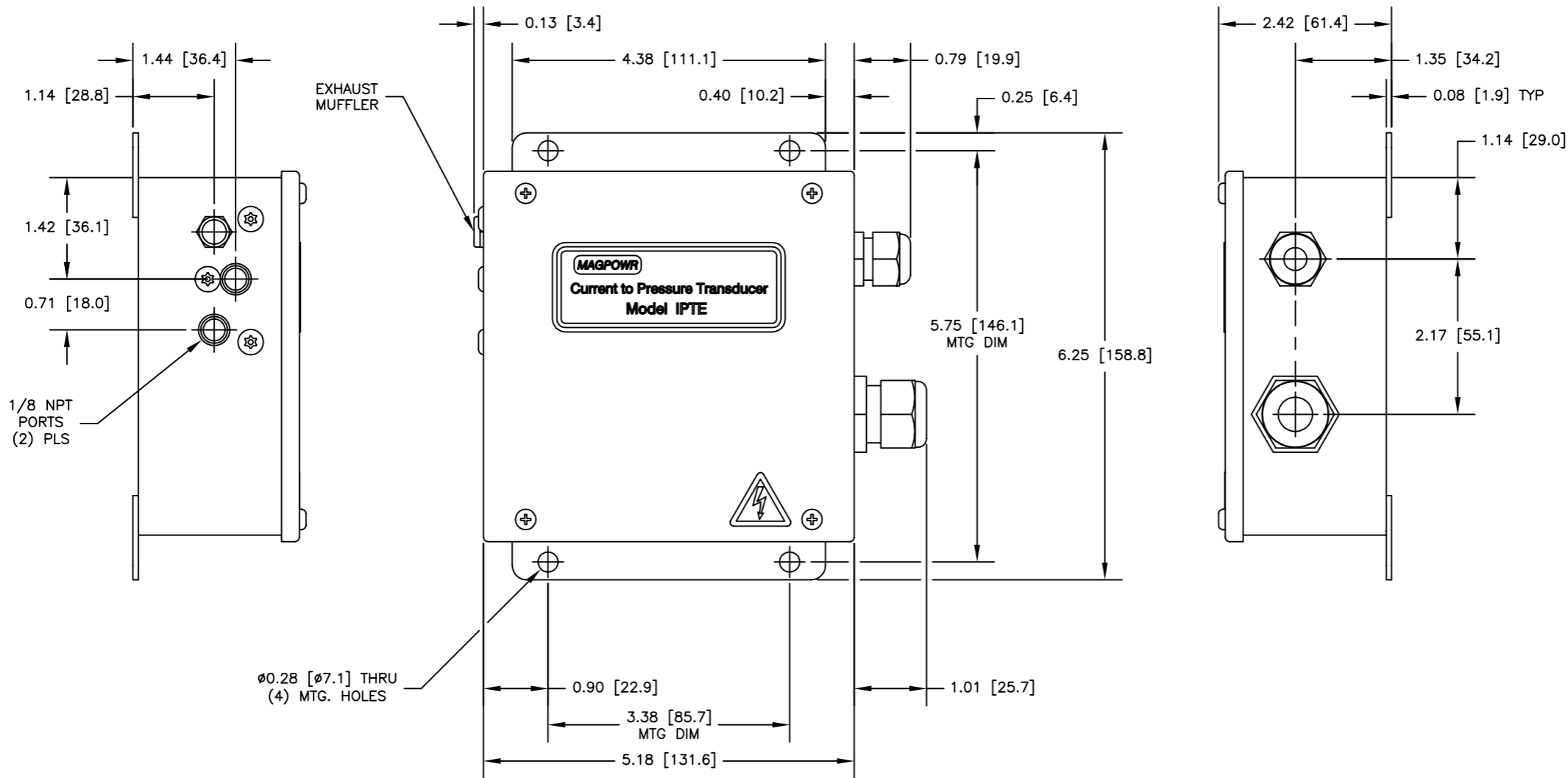


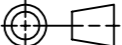


MAGPOWR INSTALLATION DRAWING
FOR FURTHER ASSISTANCE,
PLEASE CONTACT MAGPOWR AT
800-624-7697
WEB SITE: WWW.MAGPOWR.COM
E-MAIL: MAGPOWR@MAGPOWR.COM



				SYM		REVISION				BY DATE		APVD											
				BY		DATE		<div><div><div>MAXCESS</div><div>222 WEST MEMORIAL ROAD OKLAHOMA CITY, OK 73114 TEL: 405.755.1600 FAX: 405.755.8425 WWW.MAXCESSINTL.COM</div></div><div><div>MAGPOWER</div><div></div><div></div></div></div>															
				DRAWN		JGR								01/28/13									
				CHECKED		JGR								03/26/13									
				APPROVED		LZ								03/26/13									
				THIRD ANGLE PROJECTION																			
TOLERANCES: UNLESS OTHERWISE SPECIFIED				THIS DRAWING IS THE PROPERTY OF FIFE CORPORATION. IT IS LOANED WITH THE UNDERSTANDING THAT IT MAY NOT BE REPRODUCED NOR MAY THE INFORMATION CONTAINED HEREIN BE USED FOR THE MAKING OF DRAWINGS OR FOR MANUFACTURING PURPOSES WITHOUT THE WRITTEN CONSENT OF FIFE CORPORATION.								TITLE											
INCHES X = ±.1 .XX = ±.03 .XXX = ±.010				MM X = ±2.5 .X = ±.5 .XX = ±.2				FRACTIONS = STOCK SIZE				MAGPOWR OUTLINE DIMENSION DRAWING TENSION CONTROLS CURRENT TO PRESSURE TRANSDUCER IP65 ENCLOSURE											
SURFACE FINISH				GEOMETRICAL SYMBOLS PER ANSI Y14.5M UNLESS OTHERWISE SPECIFIED				DIMENSIONS ARE SHOWN IN INCHES [mm] UNLESS OTHERWISE NOTED															
EXPOSED 250 AA				MACHINED 125 AA				STANDARD SHOP PRACTICES AND STANDARD SHOP RUN TOLERANCES PER DRAWING 40400				LOCATION OK		SCALE 3/4		SIZE C		DRAWING NO. IPT-E		SHEET NO. 1 OF 1		REV	
DE-BURR ALL EDGES 0.020 [0.5] MAX																							