



Fife Corporation

P.O. Box 26508, Oklahoma City, OK 73126, USA
 Phone: 405.755.1600 / Fax: 405.755.8425
 www.fife.com / E-mail: fife@fife.com

INSTALLATION INSTRUCTIONS DS-25 KANTIROLLER

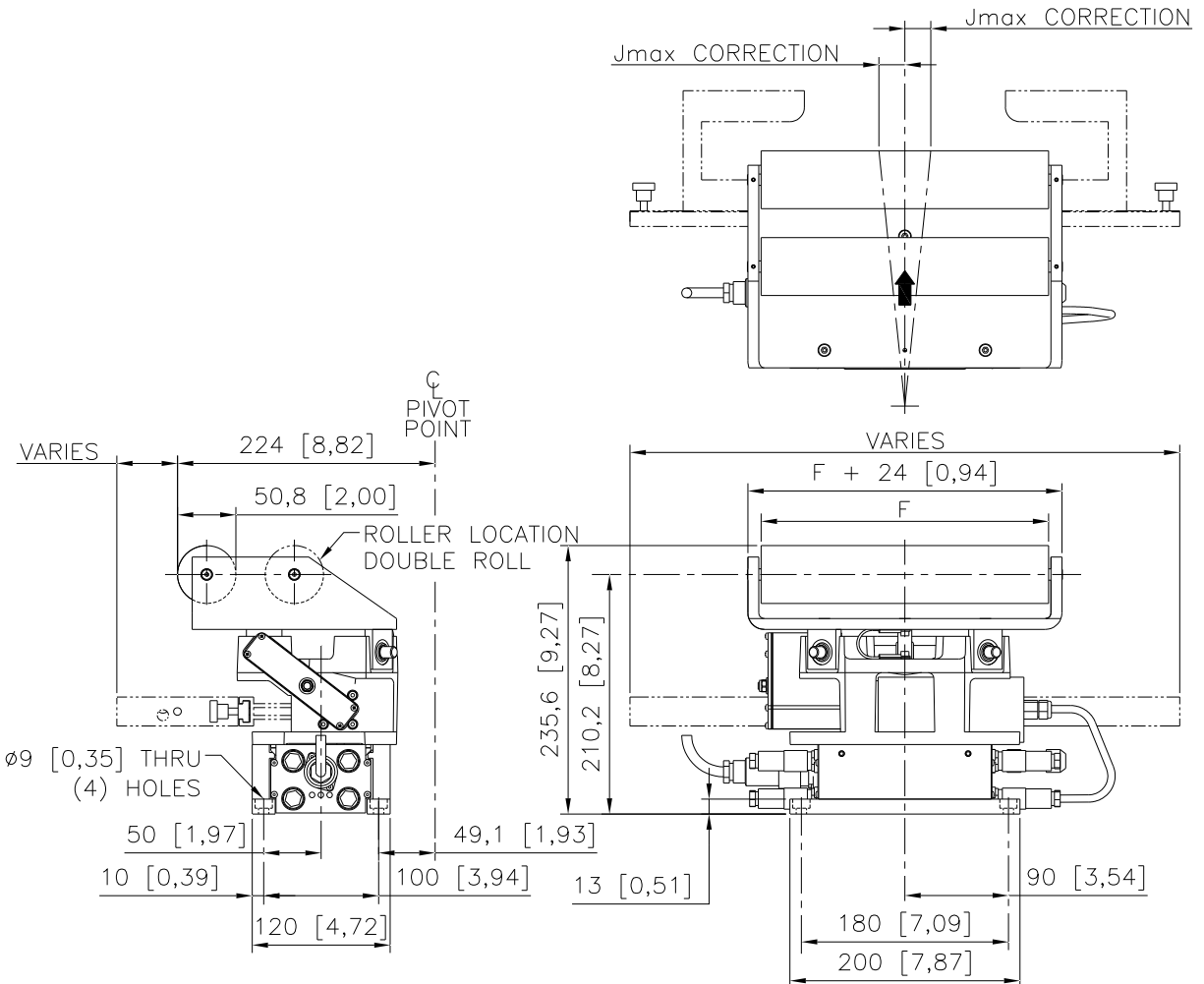


Figure 1.
DS-25 KANTIROLLER WITH
PROCESSOR AND INTEGRATED
SENSOR MOUNTING
 Dimensions are mm [inches]

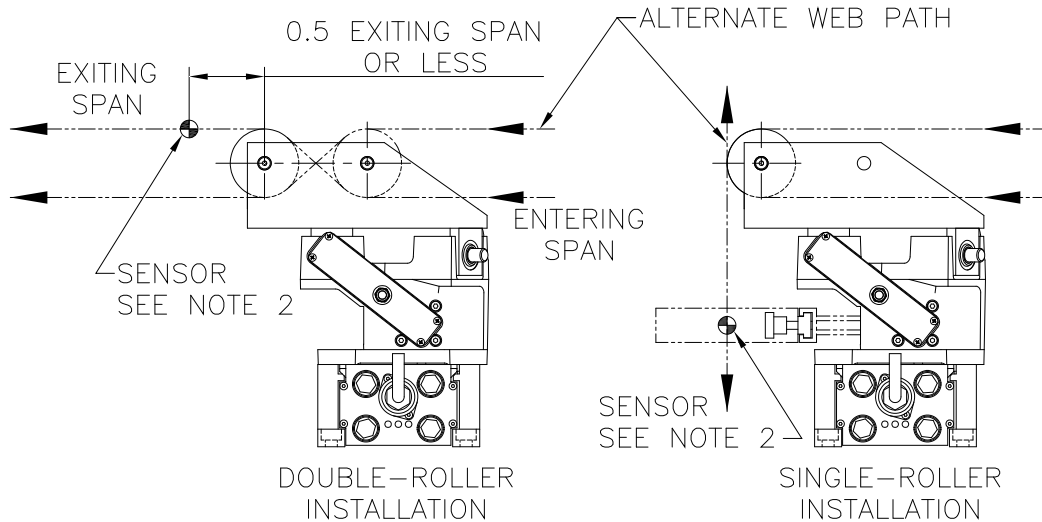
1. Install the DS-25 Kantiroller Guide in the process line such that the rollers, when in the servo center position, are parallel to the entry and exit rollers.
2. The DS-25 must be installed on a flat, machined surface that is flat within 0,5 [0,02] total indicated runout.
3. Ensure that the WEB DIRECTION ARROW on the guide is pointed in the direction of web travel.



Fife Corporation

P.O. Box 26508, Oklahoma City, OK 73126, USA
 Phone: 405.755.1600 / Fax: 405.755.8425
 www.fife.com / E-mail: fife@fife.com

INSTALLATION INSTRUCTIONS DS-25 KANTIROLLER



1. For satisfactory guiding results, do not exceed a maximum of 508 mm [20 in] in the free entering web span. The greater the error to be corrected, the greater the required free entering span must be. Also, stiff webs under high tension require long entering spans; flexible webs under low tension will require less.
2. Install the sensor downstream from the DS-25 Kantiroller and as close to it as practical. The sensor should never be farther from the guide roll than $\frac{1}{2}$ of the exiting span.
3. Where it is needed, a roller or a deadbar should be used to hold the plane of the exiting web constant and stabilize the web edge at the sensor.
4. Integrated processor and sensor mounting is optional. Integrated sensor mounting is only available for wrap styles exiting towards the raceway base.

Table A. General Specifications

Available Roll Face (F), mm [in]	160 [6,30], 200 [7,88], 250 [9,84]
Maximum Correction (Jmax), mm [in]	0,05 x L + 9,9 [0,05 x L + 0,39]
Maximum Tension (Tmax), N [lbs]	150 [34], for 'S' wrap styles
Maximum Tension (Tmax), N [lbs]	200 [45], for other wrap styles
Maximum Actuator Thrust (Tmot), N [lbs]	222 [50]
Maximum Actuator Speed (Vmot), mm/s [in/s]	56 [2,2]
Maximum Correction Speed (Vcorr), mm/s [in/s]	Jmax x 3,72 [Jmax x 3,72]
Maximum Operating Temperature °C [°F]	60 [140]
Weight, kg [lbs]	8,6 [19]