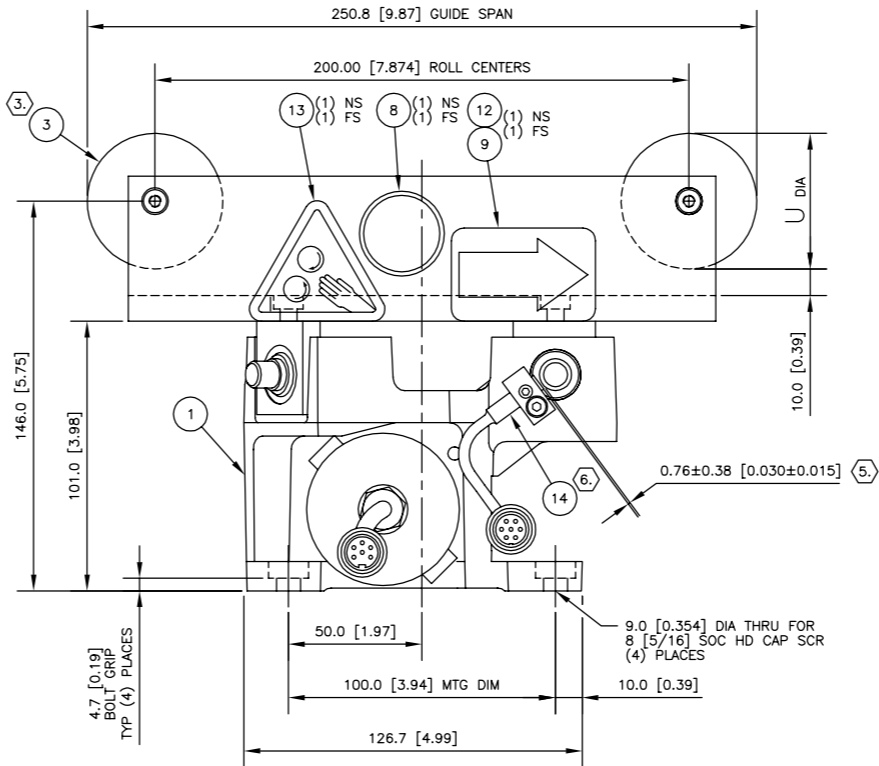


- NOTES:
- THIS GUIDE HAS BEEN APPROVED FOR ALL WRAP STYLES. POSITION THE LOGOS TO BE RIGHT SIDE UP AFTER THE GUIDE IS INSTALLED. SEE WRAP STYLE FOR PROPER ORIENTATION.
 - MAXIMUM ANGLE OF CORRECTION = 5.7°
 - STANDARD FACTORY ALIGNMENT OF GUIDE ROLLERS TO EACH OTHER AND MOUNTING BASE TO BE WITHIN 0.254 [0.010] TIR.
 - ALIGN THE CARRIER BLOCKS TO BE PERPENDICULAR TO THEIR RESPECTIVE RACERODS WHEN THE PIVOT CARRIER IS CENTERED AT MID-STROKE.
 - THE NOTED DIMENSION IS THE 'AIR GAP' BETWEEN THE END OF THE SERVO CENTER AND THE O.D. OF THE 12mm RACEROD IF THE GUIDE IS EQUIPPED WITH THE SERVO CENTER OPTION.
 - APPROXIMATE WEIGHT IS 3 KG [6.6 LB]

NO. REQD											LIST OF MATERIAL						
29L213203010	29L213203009	29L213203008	29L213203007	29L213203006	29L213203005	29L213203004	29L213203003	29L213203002	29L213203001		ITEM NO.	M	K	PART NO.	DESCRIPTION	MATERIAL	REMARKS
1	1	1	1	1	1	1	1	1	1	1					DS-25 OFFSET PIVOT GUIDE ASSEMBLY		
1	1	1	1	1	1	1	1	1	1	2				29L201003001	RACEWAY BASE ASSEMBLY		
1	1	1	1	1	1	1	1	1	1	2				29L202582008	PIVOT CARRIER		
-	-	-	-	-	-	-	-	-	2	2	3			29L76881001	ROLLER ASSY, 50.8 [2.00] DIA X 160.0 [6.30] FACE	STANDARD	
-	-	-	-	-	-	-	2	2	-	-				29L76881006	ROLLER ASSY, 50.8 [2.00] DIA X 160.0 [6.30] FACE	HARD COAT ANODIZE	
-	-	-	-	-	2	2	-	-	-	-				29L76881009	ROLLER ASSY, 50.8 [2.00] DIA X 160.0 [6.30] FACE	D.E. II PLASMA COAT	
-	-	2	2	-	-	-	-	-	-	-				29L76881016	ROLLER ASSY, 50.8 [2.00] DIA X 160.0 [6.30] FACE	RUBBER CORK TAPE	
2	2	-	-	-	-	-	-	-	-	-				29L76881020	ROLLER ASSY, 50.8 [2.00] DIA X 160.0 [6.30] FACE	11036 PLASMA COAT	
4	4	4	4	4	4	4	4	4	4	4	4			29L76882001	STUB SHAFT		
4	4	4	4	4	4	4	4	4	4	4	5			29L26704001	CUP PT SET SCR, M4 X 4mm LG		
3	3	3	3	3	3	3	3	3	3	3	6			29L90907002	SOC HD CAP SCR (LOW HD), M6 X 12mm LG		
3	3	3	3	3	3	3	3	3	3	3	7			29L26715004	SPRING LOCKWASHER, M6		
2	2	2	2	2	2	2	2	2	2	2	8			29L16409001	FIFE LOGO, 32 [1-1/4] DIA		
1	1	1	1	1	1	1	1	1	1	1	9			29L76938001	WEB DIRECTION LABEL, RIGHT HAND		
1	1	1	1	1	1	1	1	1	1	1	10			29L202984001	OPG NAMEPLATE		
1	1	1	1	1	1	1	1	1	1	1	11			29L46833004	GROUNDING STRAP KIT		
1	1	1	1	1	1	1	1	1	1	1	12			29L76938002	WEB DIRECTION LABEL, LEFT HAND		
2	2	2	2	2	2	2	2	2	2	2	13			29L92403051	WARNING LABEL		
1	-	1	-	1	-	1	-	1	-	-	14			29L201848006	ISCT-03 SERVO CENTER KIT W/ CABLE 5 M LG		

FIFE P/N	SERVO CENTER	ROLLER FINISH	U NOMINAL DIA
29L213203001	WITHOUT	STANDARD	50.8 [2.00]
29L213203002	WITH	STANDARD	50.8 [2.00]
29L213203003	WITHOUT	HARD COAT ANODIZE	50.8 [2.00]
29L213203004	WITH	HARD COAT ANODIZE	50.8 [2.00]
29L213203005	WITHOUT	DRAGON ELITE II PLASMA COAT	50.8 [2.00]
29L213203006	WITH	DRAGON ELITE II PLASMA COAT	50.8 [2.00]
29L213203007	WITHOUT	RUBBER CORK TAPE	54.0 [2.13]
29L213203008	WITH	RUBBER CORK TAPE	54.0 [2.13]
29L213203009	WITHOUT	11036 PLASMA COAT	50.8 [2.00]
29L213203010	WITH	11036 PLASMA COAT	50.8 [2.00]

LOGO POSITION	1.	WRAP STYLE
	ALL	ALL
	1	
	2	
	3	
	4	
	5	
	6	
	7	
	8	
	9	
	10	
	11	
	12	
	13	
	14	
	15	
	16	



DRAWING REFERENCE		NUMBER	APPROVED JMP 08/15/12		TITLE	
UNLESS OTHERWISE SPECIFIED		THIS DRAWING IS THE PROPERTY OF FIFE CORPORATION. IT IS LOANED WITH THE UNDERSTANDING THAT IT MAY NOT BE REPRODUCED NOR MAY THE INFORMATION CONTAINED HEREIN BE USED FOR THE MAKING OF DRAWINGS OR FOR MANUFACTURING PURPOSES WITHOUT THE WRITTEN CONSENT OF FIFE CORPORATION.		FIFE DS-25 OFFSET PIVOT GUIDE ASSEMBLY (INSTALLATION)		
GENERAL TOLERANCES:		ISO 2768-mk		THIRD ANGLE PROJECTION		
GEOMETRICAL SYMBOLS:		ISO 1101		DIMENSIONS ARE SHOWN IN mm (INCHES) UNLESS OTHERWISE NOTED		
SURFACES:		ISO 1302		250.8 [9.87] GUIDE SPAN X 160.0 [6.30] ROLL FACE		
STANDARD SHOP PRACTICES AND STANDARD SHOP TOLERANCES PER DRAWING 201724		DE-BURR ALL EDGES 0.5 [0.020] MAX	LOCATION OK	SCALE 3:4	SIZE A1	
				DRAWING NO. 213203	SHEET NO. REV 1 OF 1 A	

UPDATED MAXCESS LOGO DELETED NOTE 6 ITEM 14 WAS P/N 201848-XXX UPDATED BOM AND TABLE TO EPICOR STANDARDS ECR #82314		JGR 10/06/15	PO 10/06/15
SYM	REVISION	BY DATE	APVD
BY	DATE		
DRAWN PO	08/15/12		
CHECKED JMP	08/15/12		
APPROVED JMP	08/15/12		
THIRD ANGLE PROJECTION			
DIMENSIONS ARE SHOWN IN mm [INCHES] UNLESS OTHERWISE NOTED			
TITLE			
FIFE DS-25 OFFSET PIVOT GUIDE ASSEMBLY (INSTALLATION) 250.8 [9.87] GUIDE SPAN X 160.0 [6.30] ROLL FACE			
222 WEST MEMORIAL ROAD OKLAHOMA CITY, OK 73114 TEL: 405.755.1800 FAX: 405.755.8425 WWW.MAXCESSINTL.COM			