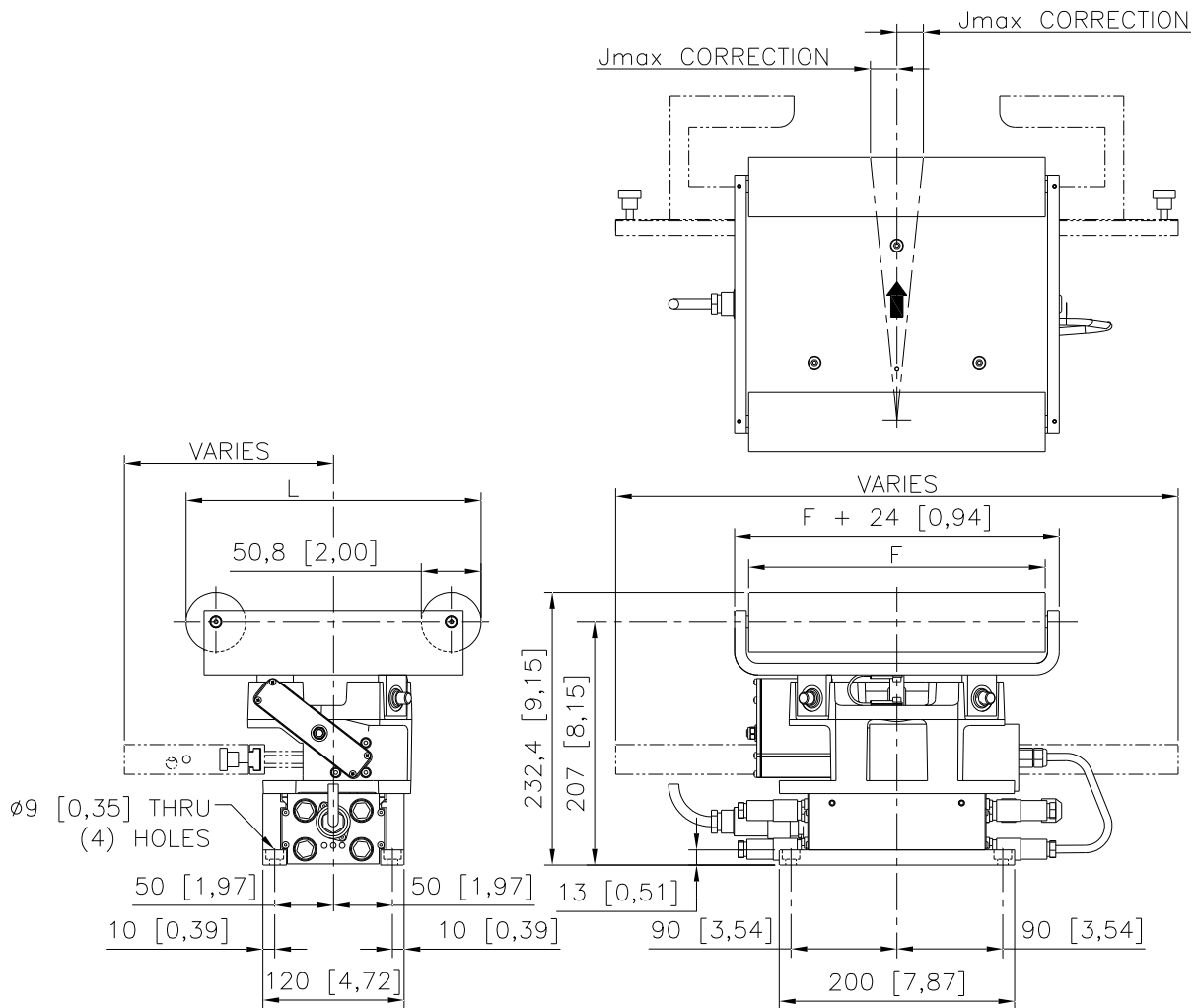




# Fife Corporation

P.O. Box 26508, Oklahoma City, OK 73126, USA  
 Phone: 405.755.1600 / Fax: 405.755.8425  
 www.fife.com / E-mail: fife@fife.com

# INSTALLATION INSTRUCTIONS DS-25 OFFSET PIVOT GUIDE



**Figure 1.**  
**DS-25 WITH PROCESSOR AND**  
**INTEGRATED SENSOR MOUNTING**  
 Dimensions are mm [inches]

1. Install the DS-25 Offset Pivot Guide in the process line such that the rollers, when in the servo center position, are parallel to the entry and exit rollers.
2. The DS-25 must be installed on a flat, machined surface that is flat within 0,5 [0,02] total indicated runout.
3. Ensure that the WEB DIRECTION ARROW on the guide is pointed in the direction of web travel.
4. See Figure sheet 1-558 for factors to consider on where and how to install the DS-25 Offset Pivot Guide for the best guiding result.
5. Integrated processor and sensor mounting is optional. Integrated sensor mounting is only available for wrap styles exiting towards the raceway base



## Fife Corporation

P.O. Box 26508, Oklahoma City, OK 73126, USA  
 Phone: 405.755.1600 / Fax: 405.755.8425  
 www.fife.com / E-mail: fife@fife.com

## INSTALLATION INSTRUCTIONS DS-25 OFFSET PIVOT GUIDE

**Table A. General Specifications**

Available Roll Face (F), mm [in]	160 [6,30], 200 [7,88], 250 [9,84]
Available Guide Span (L), mm [in]	160 [6,30], 200 [7,88], 250 [9,84]
Maximum Correction (Jmax), mm [in]	0,05 x L + 9,9 [0,05 x L + 0,39]
Maximum Tension (Tmax), N [lbs]	150 [34], for 'S' wrap styles
Maximum Tension (Tmax), N [lbs]	200 [45], for other wrap styles
Maximum Actuator Thrust (Tmot), N [lbs]	222 [50]
Maximum Actuator Speed (Vmot), mm/s [in/s]	56 [2,2]
Maximum Correction Speed (Vcorr), mm/s [in/s]	Jmax x 3,72 [Jmax x 3,72]
Maximum Operating Temperature °C [°F]	60 [140]
Weight, kg [lbs]	8,6 [19]