

INSTALLATION INSTRUCTIONS

**DS-70B
OFFSET PIVOT GUIDE**

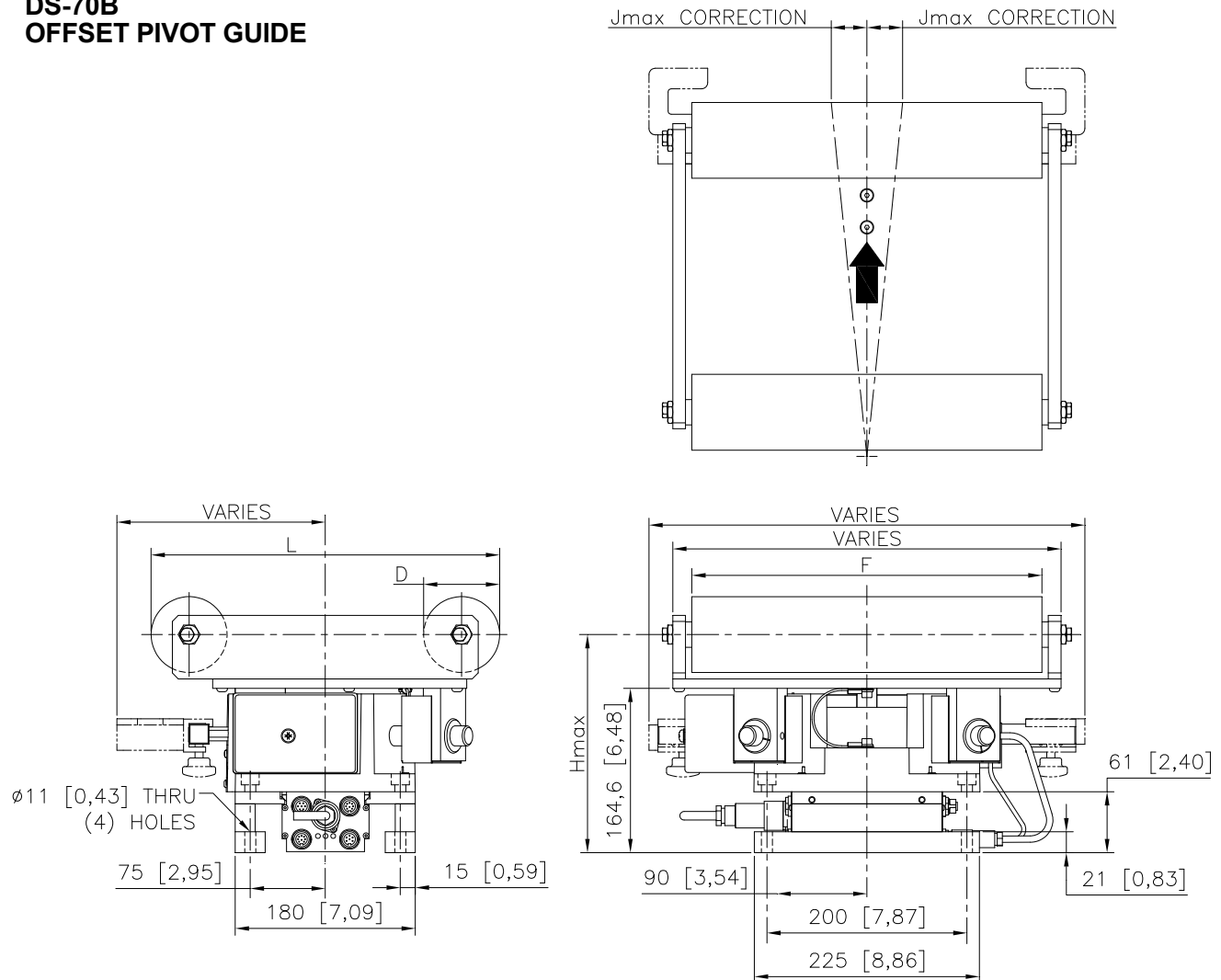


Figure 1.
**DS-70B WITH PROCESSOR
AND INTEGRATED SENSOR MOUNTING**
Dimensions are mm [inches]

1. Install the DS-70B Offset Pivot Guide in the process line such that the rollers, when in the servo center position, are parallel to the entry and exit rollers.
2. The DS-70B must be installed on a flat, machined surface that is flat within 0,5 [0,02] total indicated runout.
3. Ensure that the WEB DIRECTION ARROW on the guide is pointed in the direction of web travel.
4. See Figure sheet 1-558 for factors to consider on where and how to install the DS-70B Offset Pivot Guide for the best guiding result.
5. Integrated processor and sensor mounting is optional. Integrated sensor mounting is only available for wrap styles exiting towards the raceway base
6. Guide span L in minimum condition of 241 [9,5] is contingent upon sensor type used.

INSTALLATION INSTRUCTIONS

General Specifications

Table 1.
DS-70B OFFSET PIVOT GUIDE
General Guide Specifications

Available Guide Span (L), mm [in] for wrap styles 2, 3, 4, 5, 8, 10, 11, 14, 16	241 [9,5] thru 610 [24]
Available Guide Span (L), mm [in] for wrap styles 1, 4, 6, 7, 9, 12, 13, 15	254 [10] thru 610 [24]
Available Roll Diameters (D), mm [in]	57 [2,25], 76 [3], 102 [4], 127 [5], 152 [6]
Maximum Height (H), mm [in]	$D / 2 + 185$ [$D / 2 + 7.3$]
Maximum Correction (Jmax), mm [in]	$L / 70 + 23$ [$L / 70 + 0.9$]
Maximum Tension (Tmax), N [lbs]	311 [70], for 'S' wrap styles
Maximum Tension (Tmax), N [lbs]	623 [140], for other wrap styles
Maximum Actuator Thrust (Tmot), N [lbs]	334 [75]
Maximum Actuator Speed (Vmot), mm/s [in/s]	56 [2,2]
Guide/Actuator Ratio (GuR)	$L / 1250 + 1,2$ [$L / 50 + 1,2$]
Maximum Correction Speed (Vcorr), mm/s [in/s]	$V_{mot} \times GuR$ [$V_{mot} \times GuR$]
Maximum Operating Temperature °C [°F]	60 [140]



MAXCESS INTERNATIONAL COMPANIES



GUIDING - INSPECTION



TENSION CONTROL



SLITTING - WINDING

FIFE CORPORATION

222 W. Memorial Road, Oklahoma City, OK 73114-2317, USA / Post Office Box 26508, Oklahoma City, OK 73126-0508, USA
Phone: 405.755.1600 / 800.639.3433 / Fax: 405.755.8425 / E-mail: fife@fife.com / Web: www.fife.com