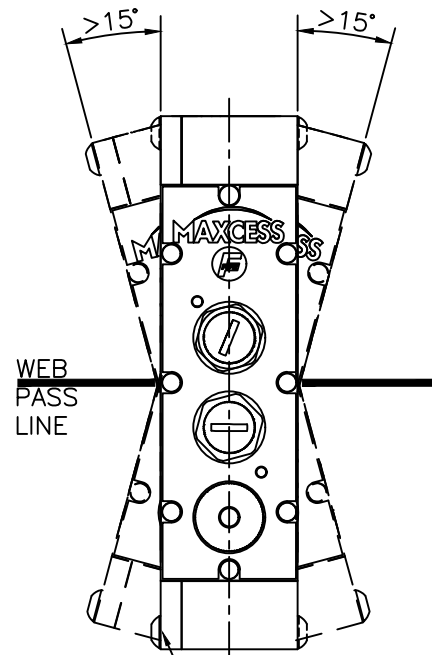


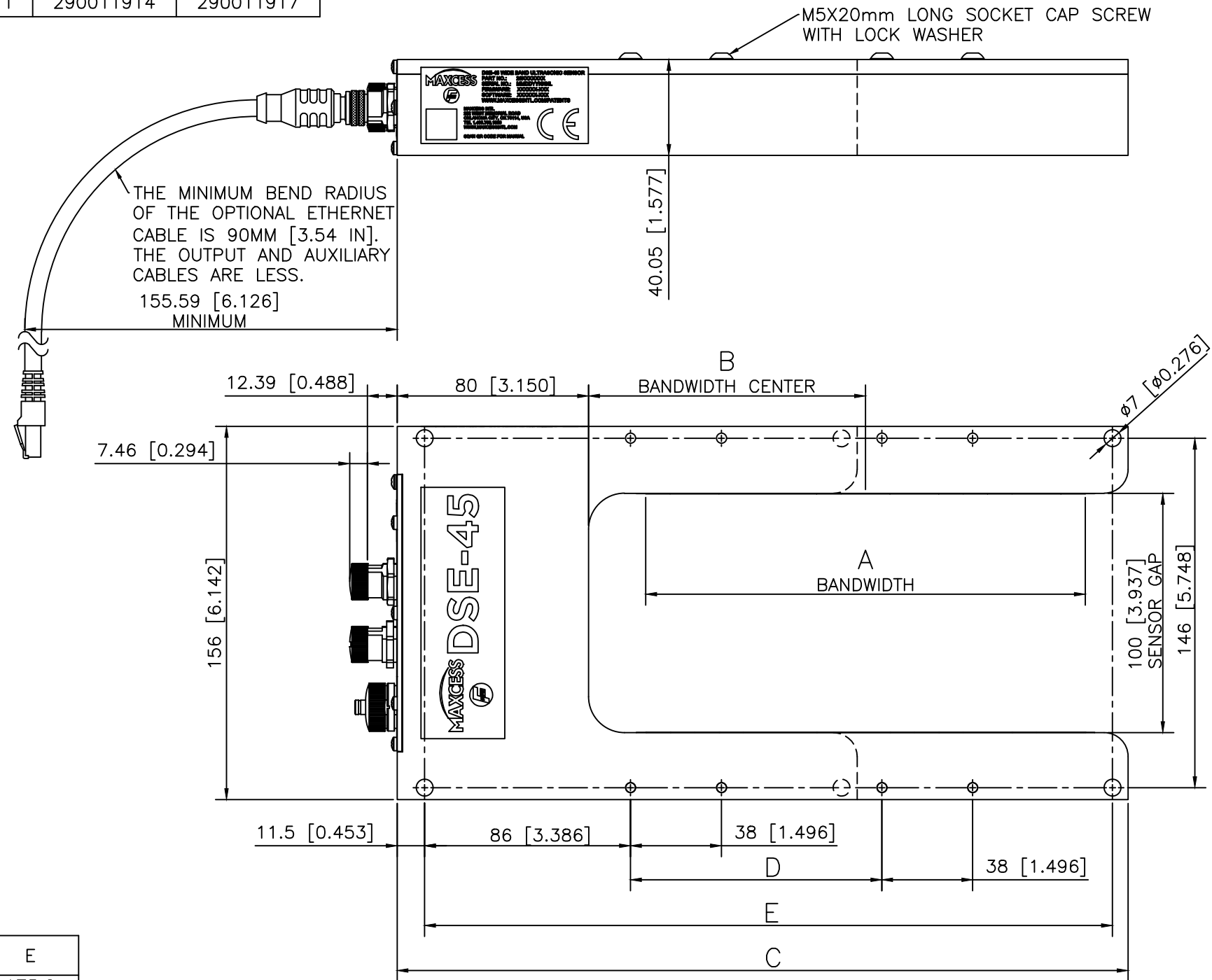
CONFIGURATION	DSE-45-52*	DSE-45-31*	DSE-45-18*	DSE-45-11*	DSE-45-07*
STANDARD ASSY (* N/A)	290011903	290011906	290011909	290011912	290011915
INDIVIDUAL CAL (* '-W')	290011904	290011907	290011910	290011913	290011916
STD + INDV CAL (* '-H')	290011905	290011908	290011911	290011914	290011917

CENTER LINE OF SENSOR SHOULD BE OFFSET 15° OR MORE OF PERPENDICULAR TO THE WEB PASS LINE



MOUNTING SCREWS CAN BE MOVED

SENSOR MODEL	A	B	C	D	E
DSE-45-07	66.2 [2.606]	59.72 [2.351]	193.2 [7.606]	N/A	175.2 [6.898]
DSE-45-11	107 [4.213]	80 [3.149]	234 [9.213]	N/A	216 [8.504]
DSE-45-18	178.4 [7.024]	115.69 [4.555]	305.4 [12.024]	105 [4.134]	287.4 [11.315]
DSE-45-31	311 [12.244]	181.98 [7.164]	438 [17.244]	210.1 [8.272]	420 [16.535]
DSE-45-52	515 [20.276]	283.96 [11.179]	642 [25.276]	420 [16.353]	624 [24.567]



M5X20mm LONG SOCKET CAP SCREW WITH LOCK WASHER

THE MINIMUM BEND RADIUS OF THE OPTIONAL ETHERNET CABLE IS 90MM [3.54 IN]. THE OUTPUT AND AUXILIARY CABLES ARE LESS.
155.59 [6.126]
MINIMUM

40.05 [1.577]

12.39 [0.488]

80 [3.150]

B BANDWIDTH CENTER

7.46 [0.294]

156 [6.142]

A BANDWIDTH

100 [3.937]

146 [5.748]

SENSOR GAP

11.5 [0.453]

86 [3.386]

38 [1.496]

D 38 [1.496]

E

C

BY		REVISION		BY DATE	APVD
DRWN	RTO	01/17/20			
CHEK	TH	01/17/20			
APPR	JH	01/17/20			

222 WEST MEMORIAL ROAD
OKLAHOMA CITY, OK 73114
TEL: 405.755.1600
FAX: 405.755.9425
WWW.MAXCESSINTL.COM

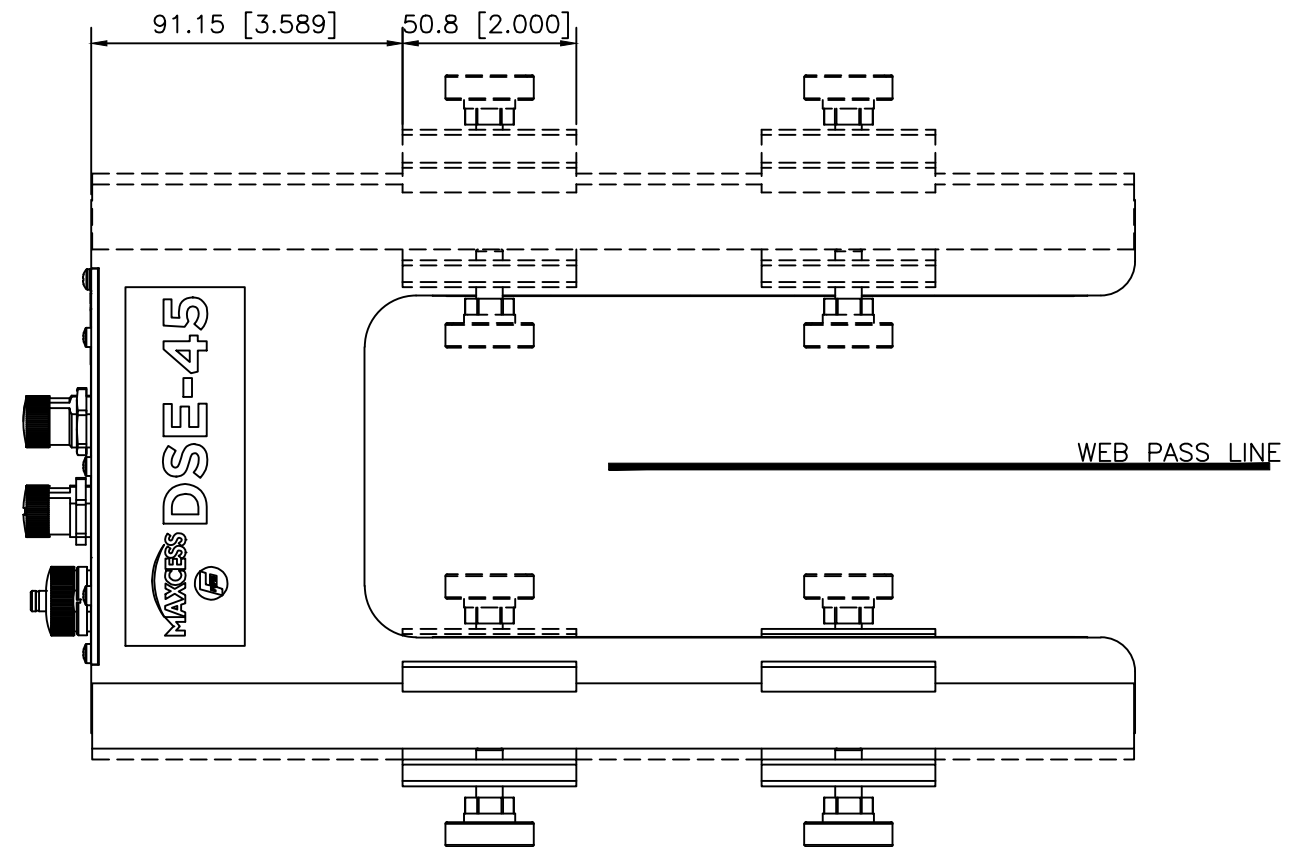
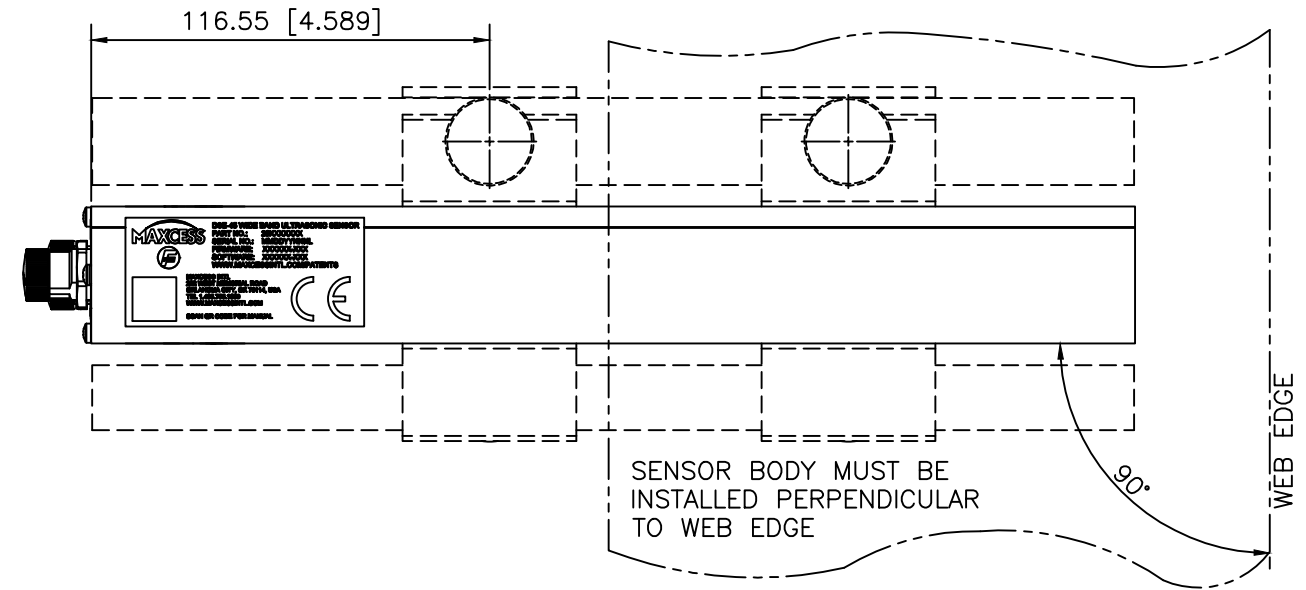
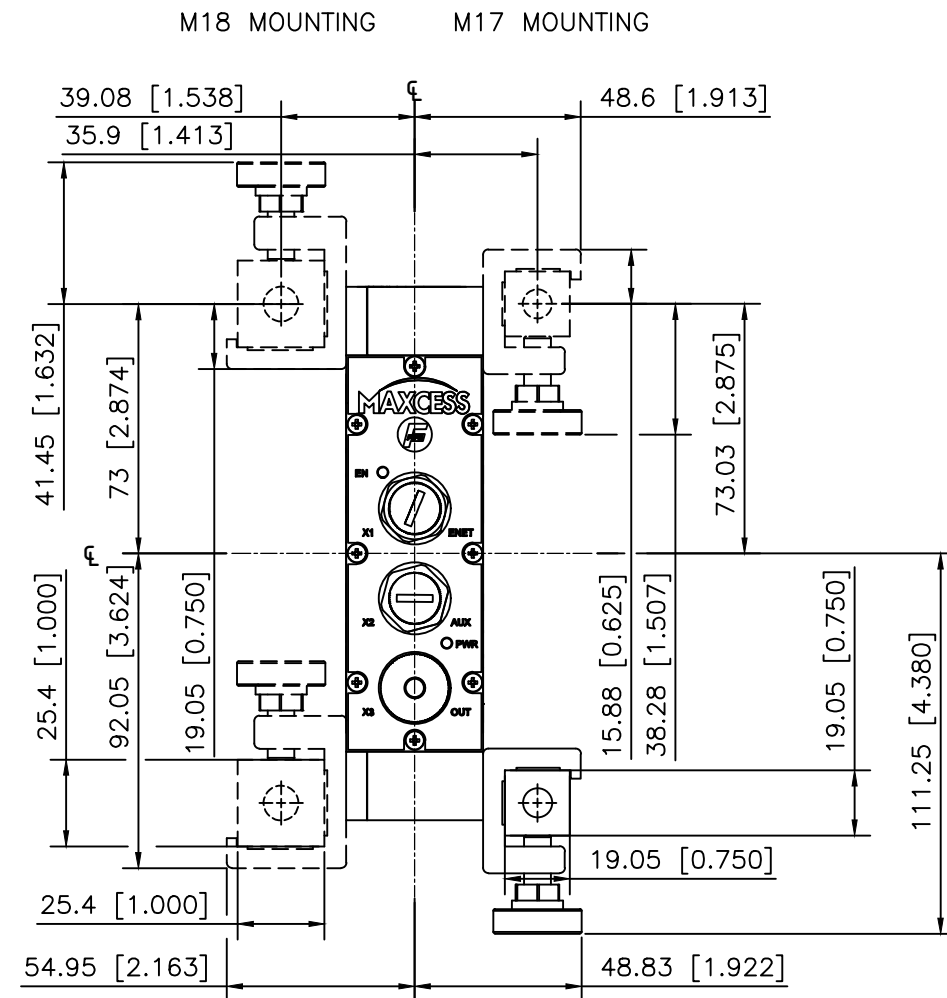
MAXCESS

TITLE
FIFE
INSTALLATION
DSE-45-XX SENSOR

STANDARD SHOP PRACTICES AND STANDARD SHOP TOLERANCES PER DRAWING 201724	DE-BURR ALL EDGES 0.5 (0.025) MAX	LOCATION	SCALE	SIZE	DRAWING NO.	SHEET NO.	REV
		OK	1:1	A1	227201	1 OF 2	—

SPECIFICATIONS:
 PROTECTION CLASS IP65
 OPERATING AMBIENT TEMPERATURE RANGE .. 0° to +60°C [+32° to +140°F]
 OPERATING HUMIDITY RANGE 15 to 90% RELATIVE HUMIDITY WITH NO CONDENSATION
 SUPPLY VOLTAGE 12 to 48 VOLTS DC NOMINAL
 MAXIMUM CURRENT AT 10.5 VOLTS DC DSE-45-07: 0.225 Amps
 DSE-45-11: 0.235 Amps
 DSE-45-18: 0.245 Amps
 DSE-45-31: 0.285 Amps
 DSE-45-52: 0.335 Amps

MAINTENANCE:
 THE SE-45 SENSOR REQUIRES NO SCHEDULED MAINTENANCE. WHEN NECESSARY, CLEAN THE SURFACE OF THE TRANSDUCERS USING A CLEAN, WATER DAMPENED CLOTH. IF NECESSARY, A MILD SOAP SOLUTION MAY BE USED TO DAMPEN THE CLOTH. DO NOT USE CHEMICAL CLEANERS OR SOLVENTS WHEN CLEANING THE TRANSDUCERS SINCE THOSE MATERIALS MAY CAUSE DAMAGE TO THE TRANSDUCERS.



BY		DATE		REVISION		BY DATE		APVD	
DRAWN	RTO	01/17/20							
CHECKED	TH	01/17/20							
APPROVED	JH	01/17/20							
DRAWING REFERENCE				NUMBER					
UNLESS OTHERWISE SPECIFIED				THIS DRAWING IS THE PROPERTY OF FFE CORPORATION. IT IS LOANED TO THE UNDERSIGNED AND IS NOT TO BE REPRODUCED OR USED FOR ANY PURPOSES WITHOUT THE WRITTEN CONSENT OF FFE CORPORATION.					
GENERAL TOLERANCES:				ISO 2768-mk					
GEOMETRICAL SYMBOLS:				ISO 1101					
DIMENSIONS ARE SHOWN IN				MM (INCHES) UNLESS OTHERWISE NOTED					
STANDARD SHOP PRACTICES AND STANDARD SHOP TOLERANCES PER DRAWING 201724				DE-BURR ALL EDGES 0.5 (0.020) MAX		LOCATION OK		SCALE 1:1	
SIZE A1				DRAWING NO. 227201		SHEET NO. 2 OF 2		REV -	

222 WEST MEMORIAL ROAD
 OKLAHOMA CITY, OK 73114
 TEL: 405.755.1600
 FAX: 405.755.9425
 WWW.MAXCESSINTL.COM

TITLE
 FIFE
 INSTALLATION
 DSE-45-XX SENSOR