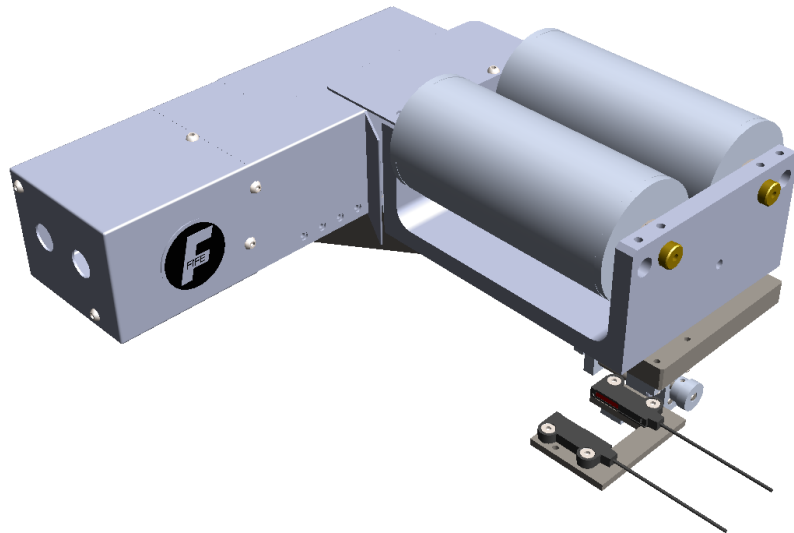




Fife-200 Web Guiding System

User Manual



EN

MI 2-277 1 B

CONTENTS

INTRODUCTION	1-1
Copyright information	1-1
Language	1-1
Theory of operation	1-1
SAFETY INSTRUCTIONS	2-1
Symbols used	2-2
Basic safety information	2-3
Warnings	2-5
DISPLAY DEFINITIONS	3-1
Button functions and definitions	3-3
Status bar definitions	3-5
Manual menu tree	3-8
Servo-Center menu tree	3-10
Automatic menu tree.....	3-11
Security strategy	3-12
Authorization levels.....	3-12
Access modes.....	3-13
Keypad operation	3-14
MENU DESCRIPTIONS	4-1
Security	4-1
Logout.....	4-1
Login	4-1
Passwords	4-2
Menu protection	4-3
Display	4-4
Language.....	4-4
Brightness	4-5
Rotate.....	4-6
Calibrate touch	4-7
OI settings	4-8
Service	4-10
About	4-10
Measure.....	4-11
Control outputs	4-13
Color test	4-14
Motor type.....	4-15
Com statistics.....	4-16
Remote control.....	4-18
ASC	4-19
ASC Off.....	4-19
ASC On	4-19
ASC settings	4-20
Gain	4-22

CONTENTS

SC Gain	4-25
Sensor setup	4-26
SE-47 sensor setup	4-26
Button descriptions	4-28
Calibration procedure.....	4-29
Autosetup	4-31
Guide settings.....	4-33
Control options	4-35
Power On mode.....	4-37
Backup	4-38
Restore.....	4-39
Hardlock	4-40
Name	4-41
Network	4-42
DIGITAL INPUT/OUTPUT MATRIX	5-1
Digital input matrix.....	5-1
Digital output matrix.....	5-2
SYSTEM NOTES	5-1
TROUBLESHOOTING	7-1
Fault diagnostics and rectification.....	7-1
SERVICE AND REPLACEMENT PARTS	8-1

Introduction

Copyright information All of the information herein is the exclusive proprietary property of Maxcess International, and is disclosed with the understanding that it will be retained in confidence and will neither be duplicated nor copied in whole or in part nor be used for any purpose other than for which disclosed.

Language These are the original instructions, written in English.

Theory of operation The Fife-200 Web Guiding System is designed for use in industrial equipment that is involved with processing a moving web. It is typically installed in line with the web travel to provide lateral steering of the web in critical areas such as winding, rewinding, or any important mid-stream process. It is not uncommon to find multiple web guides steering the same web at different locations of web travel. Guiding a web is accomplished by applying several concepts with each directed at a particular part of the task. The basic concepts are:

- Sense the lateral position of the web edge (sensors)
- Generate a correction signal proportional to the error (signal processor)
- Apply forces to the web to non-destructively move it to the desired location (motor-controlled mechanical pivoting rollers)

Sensing

Sensing the lateral position of the web edge can be done by a variety of sensing technologies with the most common being infrared or ultrasonic. The sensing technology employed in any given application is driven by the respective web properties in combination with the amount of sensor proportional band that is needed. For optically opaque webs, infrared sensors are common, but for webs that are highly transparent, ultrasonic methods are more successful.

continued

Theory of operation

(continued)

Infrared sensing

Infrared sensors direct infrared light from a transmitter through the sensing gap to the opposing receiver. In this arrangement, web lateral position is determined by the amount of light that arrives at the receiver. Modulation techniques and infrared filtering is commonly used to combat interference from ambient light sources.

Ultrasonic sensing

Ultrasonic sensors work similar to infrared methods except they use high frequency sound waves instead of light.

Correction signal

The sensor information is provided to a signal processor that can provide many types of signal conditioning, including amplification, guide point offset compensation, etc. The final result, however, is simply a motor drive signal of the proper polarity to cause web movement to the desired web position. Additional provisions are present in the signal processor to control manual guide positioning, select from multiple sensor inputs, perform automatic guide centering, and support remote control.

Web guiding

The output of the signal processor is fed to a motor that is coupled to a set of pivoting rollers. In order to ensure enough friction exists between the moving web and the guide rollers, the web path and location of the guide rollers are designed to ensure a certain amount of surface area contact with the roller surface. Under these conditions, the pivoting roller set in combination with web movement over the rollers, provides the forces needed to control lateral web displacement.

As a system, these concepts work together to sense the web lateral position and generate a motor drive signal of proper polarity to cause the web to move toward the desired location. This cycle is repeated continuously thus forming a closed loop control system to actively maintain the web at the desired position.

Safety instructions

Instructions for use



To ensure safe and problem free installation of the Fife-200 Web Guiding System, the web guiding system must be properly transported and stored, professionally installed and placed in operation. Proper operation and maintenance will ensure a long service life of the device. Only persons who are acquainted with the installation, commissioning, operation and maintenance of the system and who possess the necessary qualifications for their activities may work on the Fife-200 Web Guiding System.

Note: The safety information may not be comprehensive.

Please note the following:

- The content of these operating instructions
- Any safety instructions on the device
- The machine manufacturer's specifications
- All national, state, and local requirements for installation, accident prevention and environmental protection

Information about safety instructions

The safety instructions and symbols described in this section are used in these operating instructions. They are used to avoid possible dangers for users and to prevent material damage.



SIGNAL WORD

Source of danger and its results
Avoiding dangers

The signal word **DANGER** refers to the danger of death or serious bodily injuries.

The signal word **WARNING** refers to the danger of moderate to severe bodily injuries.

The signal word **CAUTION** refers to the danger of slight to moderate bodily injuries or material damage.

The signal word **NOTICE** refers to the possibility of damage to equipment.

Symbols used

The following safety identification symbols are used in these operating instructions.



WARNING/CAUTION - General danger or important note
Reference to general hazards that may result in bodily injuries or damage to device or material.



WARNING/CAUTION - Danger due to crushing
Reference to danger of injury caused by crushing.



WARNING/CAUTION - Danger due to cutting
Reference to danger of injury caused by cutting.



WARNING/CAUTION - Danger due to voltage, electric shock
Reference to danger of injury caused by electric shock due to voltage.



WARNING/CAUTION - Danger due to hot surfaces
Reference to risk of injury caused by burning.

Basic safety information

Proper use

- The Fife-200 Web Guiding System is intended to be used on machines or systems to guide a web of material.
- For indoor operation, see environmental specifications.

Improper use

- Operation outside the technical specifications
- Operation in an Ex-area or intrinsically safe area
- Operation as a safety component. The Fife-200 Web Guiding System does not hold the web position if power fails.
- Outdoor operation
- Any other use than the proper use shall be deemed inappropriate

Installation and commissioning

- Disconnect power from the Fife-200 Web Guiding System before connecting or disconnecting any cables.
- All cable bushings must be tightened sufficiently to provide the required connection for the cable shielding.
- Any Fife-200 Web Guiding System which is damaged must not be installed or put into operation.
- Only perform installation, maintenance or repair tasks on the Fife-200 Web Guiding System when the machine has been stopped and is secured from being turned on.
- Only perform installation, maintenance or repair tasks on the Fife-200 Web Guiding System when there is no electrical power in the system.
- The Fife-200 Web Guiding System must be securely mounted before being placed in operation.
- Only replacement parts obtained from Fife may be used.
- No modifications may be made to the Fife-200 Web Guiding System.
- Do not place electrical cables under mechanical strain.



WARNING – Death or injury can result from static electric shocks. Moving webs of material can produce large static voltage potentials. Protect against electric shocks by connecting the PE conductor to the PE circuit of the building or machine.



WARNING – The Fife-200 Web Guiding System contains rotating and moving parts which could cause injury due to crushing. Appropriate protective guards must be installed by the user according to his use of this product.



WARNING – Death or injury can result from unexpected movement. Protect against unexpected movement by removing electrical power from the Fife-200 Web Guiding System and the machine into which the Fife-200 Web Guiding System is being installed.

Operation



WARNING – The Fife-200 Web Guiding System contains rotating and moving parts which could cause injury due to crushing. Do not touch anything on or in the vicinity of the moving or rotating parts. Appropriate protective guards must be installed by the user according to his use of this product.

Maintenance and Repair



WARNING – Death or injury can result from unexpected movement. Protect against unexpected movement by removing electrical power from the Fife-200 Web Guiding System and the machine into which the Fife-200 Web Guiding System is installed.



WARNING – Danger of injury from crushing. Maintenance and repair tasks on the Fife-200 Web Guiding System must be performed only when the machine has been stopped and has been secured from being turned on again.

Decommissioning

The Fife-200 Web Guiding System must be disposed of in accordance with all the applicable national, state and local regulations.

Warnings

Lockout/Tagout

The Fife-200 Web Guiding System may be remotely controlled via a digital port connection. As with any remotely-controlled device, when remote control of the device is implemented, there is the possibility of movement of the guiding structure when remote commands are issued. Therefore, any time personnel are near the guiding structure, it is recommended that standard safeguards be taken to prevent injury. During servicing of the equipment, to prevent injury to personnel, it is recommended that standard Lockout/Tagout procedures be used.

Display definitions

The Fife-200 Web Guiding System operator interface uses a QVGA Touchscreen for operator command inputs and status displays.

The status display is divided into four sections and displays the status of four guides and shown in Figure 1. Touching any section will take the focus to a specific guide's control panel. Each guide has an address from 1 to 28 and a single Fife-200 Controller can control up to four guides. Each Fife-200 controller allocates four consecutive addresses.

The status for each guide shows the guide point, actual sensor position and mode information Automatic, Manual, or Servo-Center. This screen is displayed when power is turned on.

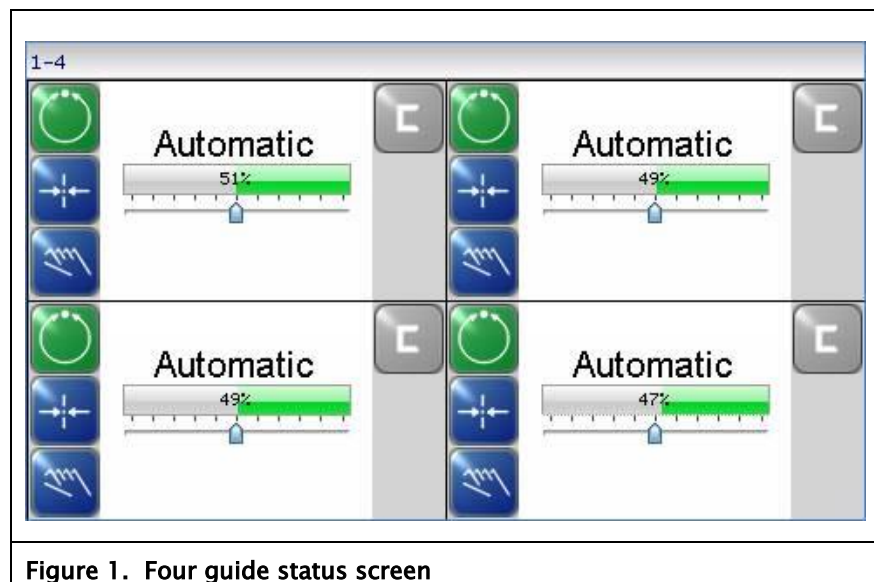


Figure 1. Four guide status screen

DISPLAY DEFINITIONS (continued)

The control panel is divided into five sections of information for which brief descriptions follow. Refer to Figure 2 for the button locations in the standard, horizontal control panel.

- The vertical section on the left side contains the operation mode selection buttons (Automatic, Servo-Center, and Manual) and indicates the current operation mode selection by displaying the corresponding button in a green color. (Other buttons are blue.)
- The horizontal section at the top, above the line, contains the status bar which always contains the screen number. It may also indicate statuses, errors, and digital I/O.
- The middle section indicates the current operation mode, the selected sensor signal level in a bar graph, and the position of the system guide point. This section also contains buttons for Guidepoint Shift and Guidepoint Reset.
- The lower middle section contains the left and right jog buttons. At the left is a button to return to the four guide status screen.
- The vertical section on the right side contains the Sensor Selection and Setup buttons and indicates the current sensor mode selection by displaying the proper sensor symbol on the Sensor Select button.

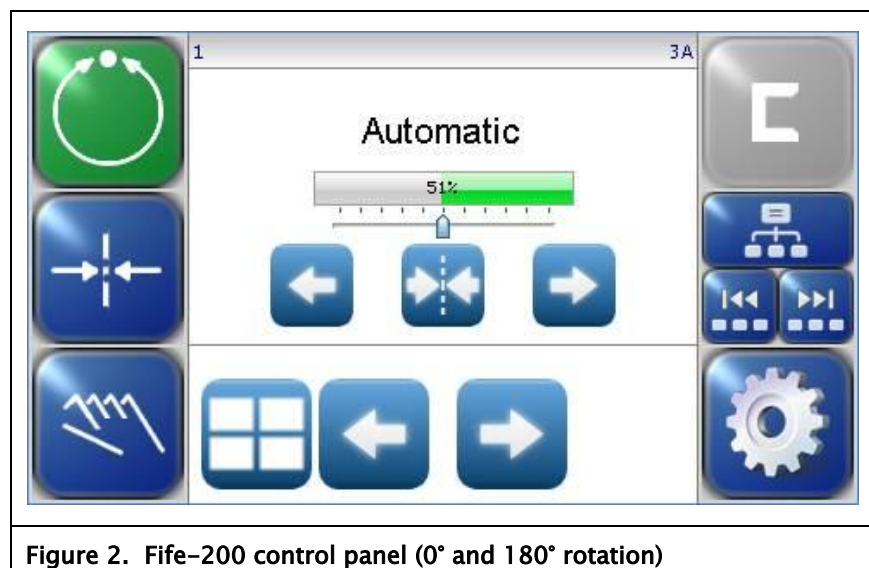


Figure 2. Fife-200 control panel (0° and 180° rotation)

Button functions and definitions



AUTOMATIC Initiates the Automatic mode. Correction is applied to the web by moving the guide in response to the output of the sensor(s) that have been selected.



SERVO-CENTER Initiates the Servo-Center mode. The guide is centered in its travel. The guide moves first to both hard stops and then centers the guide between the stops and holds this position. This initial movement occurs each time Servo-Center mode is entered from another mode.



MANUAL Initiates the Manual mode. No correction is applied to the guide.



SENSOR Use to select the sensor(s) to be used for monitoring the web position when the system is in Automatic mode. Sensor selection is allowed in Manual and Servo-Center modes only.



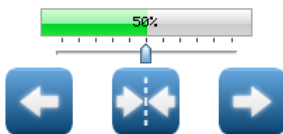
SETUP Use to enter the Setup Menus for configuring and adjusting the guiding system.



4 GUIDE STATUS Use to display status of 4 guides.



ARROWS Use these buttons to jog the guide. The direction of guide movement is configurable.



GUIDE POINT CONTROL Use the two arrow buttons to adjust the System Guide Point while in Automatic Mode or Manual Mode. Use the center button to reset the System Guide Point to the default value, which is 50% of the sensor bandwidth. The slider control indicates the guide point position. The color of the guide point pointer is blue when the guide point is zero, yellow when a guide point shift is present and red when the guide point shift has reached either extreme.



GUIDE POINT CAPTURE This optional button (which can be enabled from the "OI Settings" menu) sets the guide point of the active sensor mode to the current web location. This allows guiding to begin at the current web location when the Automatic mode is initiated.

BUTTON FUNCTIONS (continued)



DRIVE SELECT This button will only appear in networked systems. When available, it displays a list of available drives in the network and allows the OI to be switched directly to any of them.



DRIVE SELECT These buttons will only appear in networked systems. When available, they allow the operator interface to be connected to the previous or next sequential drive in the network.



LINK DRIVES This optional button (which can be enabled from the “OI Settings” menu) will only appear in networked systems. When the “linked mode” is active (indicated by the green button appearance), Automatic, Manual, and Servo-Center commands initiated from this Operator Interface are directed to all drives in the network simultaneously.



BACK Use this menu navigation button to return to the previous menu level.



HOME Use to return to the Operator Level screen.



MENU ARROWS Use in the menu system to page forward or backward when multiple pages of menu choices are available. The arrows are disabled when no more choices are available in the respective direction.



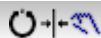
ACCEPT Use to save a changed value and return to the previous screen



REJECT Use to discard a changed value and return to the previous screen.

Status bar definitions

The status bar located horizontally across the top of the Operator Level screen remains visible at all times. The number on the left side of the status bar contains the numerical address of the connected motor controller and it should always be 1 (except in networked systems, where it will indicate the address of the currently selected drive). The number on the right side of the status bar indicates a hierarchical screen number. The first numerical value indicates the operation mode (1=Manual, 2=Servo-Center, 3=Automatic). The second alphabetic character indicates the sensor mode (A=S1, B=S2, C=S1-S2). This screen number uniquely identifies each screen of the operator interface. The status bar also displays various icons which are described below.



OPERATION MODE One of these icons will appear to indicate the operation mode of the guide. These do not appear on the Operator Level screen since the mode buttons already indicate this information. These will only appear while in the setup screens.











SENSOR SELECTION One of these icons will appear to indicate the currently selected sensor mode. These do not appear on the Operator Level screen since the SENSOR button already contains this information. Typically, only sensor S1 is active per guide for the Fife-200 Web Guiding System unless configured for line sensor mode.




MENU TIMEOUT The menu screens close automatically after 3 minutes of touch screen inactivity. The inactivity timeout option and the timeout value are configurable. The clock icons will appear during stages of the timeout process as the inactivity timer counts down. If a timeout occurs, the respective menu will abort any changes applied and return to the Operator Level screen. Some service-related screens are immune from the timeout option and are indicated by the presence of the orange clock icon.

STATUS BAR DEFINITIONS (continued)

	LOGIN AUTHORIZATION LEVEL When security has been configured, one of these icons will appear to indicate the authorization level of the current user. Level 1 has the least access while level 3 has the most. Security is disabled in the factory default configuration so these icons will not be displayed. All menu screens are accessible when security is disabled.
	READ ONLY MENU When security is enabled, options are available to make menus “read only”, allowing an operator to view the settings but not change them. This icon will appear when the active menu is a “read only” menu.
	DIGITAL INPUT COMMAND This icon appears when a valid digital input command is present. Depending on the command, some touch panel controls may be disabled during this time. A red arrow in the down direction indicates digital input influence is disabled. A red up arrow indicates the digital outputs are disabled. The Fife-200 Web Guiding System only has 3 digital inputs per guide.
	GUIDE POINT CHANGED This icon appears when a new System Guidepoint has been applied. This icon will appear on the status bar until the System Guidepoint remains unchanged for approximately 20 seconds.
	EXTERNAL LOCK This icon indicates the acceptance of the “External Lock” digital input command. Automatic guide movement is prohibited while in this state.
	ASC ON Automatic Sensor Control (ASC) is enabled for the current sensor mode. See the menu description for ASC for more information about ASC operation.
	ASC ACTIVE Automatic Sensor Control (ASC) is enabled and the ASC state has been triggered. Automatic guide movement is prohibited. See the menu description for ASC for more information about ASC operation.
	MOTOR BLOCKED This icon indicates the motor is stalled.

STATUS BAR DEFINITIONS (continued)

	COMMUNICATION ERROR This error icon indicates communication is not working between the operator interface and the motor controller.
	VOLTAGE ERROR This error icon appears when the input voltage, motor rail voltage, or internal 12 volt power is outside acceptable range.
	NETWORK ERROR This icon appears when the operator interface is unable to gain network control.
	LINKED MODE This icon appears when the “linked mode” is active. Linked mode is used in networked systems to send the Automatic, Manual, and Servo-Center commands to all network devices simultaneously.
	MOTOR TYPE FAULT This icon appears when there is no motor type configured.
	COMMUNICATION FAULT This icon appears when a problem is detected with the communication signals. This can be caused by hardware or an addressing conflict in a networked system.
	LINE SPEED ZERO This icon appears when line speed control is enabled and the sensed line speed is zero. Guide correction is inhibited in Automatic mode under these conditions. Not available in the Fife-200 Web Guiding System.
	MCP-05 SEEK If the MCP-05 option has been enabled, this icon will blink while a seek operation is in progress. Not available in the Fife-200 Web Guiding System.
	MOTOR ENCODER FAULT This icon appears when a problem is detected with the encoder signals from the motor. Not available in the Fife-200 Web Guiding System.
	MOTOR HALL STATE FAULT This icon appears when a problem is detected with the motor hall state transitions. Not available in the Fife-200 Web Guiding System.

Manual menu tree

The menus that are available in the operator interface vary depending on the active operation mode. The following information provides a quick reference to summarize the menu tree for each mode. Each menu is described in more detail later in this document.



1X MANUAL



SETUP



1X.1.1 SECURITY



1X.1.1.1 LOGOUT



1X.1.1.2 LOGIN



1X.1.1.3 PASSWORDS



1X.1.1.4 MENU PROTECTION



1X.1.2 DISPLAY



1X.1.2.1 LANGUAGE



1X.1.2.2 BRIGHTNESS



1X.1.2.3 ROTATE



1X.1.2.4 CALIBRATE TOUCH



1X.1.2.5 OI SETTINGS



1X.1.3 SERVICE



1X.1.3.1 ABOUT



1X.1.3.2 MEASURE



1X.1.3.3 CONTROL OUTPUTS



1X.1.3.4 COLOR TEST



1X.1.3.5 MOTOR TYPE



1X.1.3.6 COM STATISTICS



1X.1.4 REMOTE CONTROL



1X.1.5 ASC



1X.1.5.1 ASC OFF



1X.1.5.2 ASC ON



1X.1.5.3 ASC SETTINGS



1X.1.6 GAIN



1X.1.7 SENSOR SETUP



1X.1.8 AUTOSETUP



Page forward/back



1X.2.1 GUIDE SETTINGS



1X.2.2 CONTROL OPTIONS



1X.2.3 POWER ON MODE



1X.2.4 BACKUP



1X.2.5 RESTORE



1X.2.6 HARDLOCK



1X.2.7 NAME



1X.2.8 NETWORK

Servo-Center menu tree



2X SERVO-CENTER



SETUP



2X.1.1 SECURITY



2X.1.1.1 LOGOUT



2X.1.1.2 LOGIN



2X.1.1.3 PASSWORDS



2X.1.1.4 MENU PROTECTION



2X.1.2 DISPLAY



2X.1.2.1 LANGUAGE



2X.1.2.2 BRIGHTNESS



2X.1.2.3 ROTATE



2X.1.2.4 CALIBRATE TOUCH



2X.1.2.5 OI SETTINGS



2X.1.3 SERVICE



2X.1.3.1 ABOUT



2X.1.3.2 MEASURE



2X.1.3.3 CONTROL OUTPUTS



2X.1.3.4 COLOR TEST



2X.1.3.5 MOTOR TYPE



2X.1.3.6 COM STATISTICS



2X.1.4 REMOTE CONTROL



2X.1.5 ASC



2X.1.5.1 ASC OFF



2X.1.5.2 ASC ON



2X.1.5.3 ASC SETTINGS



2X.1.6 SC GAIN



2X.1.7 CONTROL OPTIONS

Automatic menu tree



3X AUTOMATIC



SETUP



3X.1.1 SECURITY



3X.1.1.1 LOGOUT



3X.1.1.2 LOGIN



3X.1.1.3 PASSWORDS



3X.1.1.4 MENU PROTECTION



3X.1.2 DISPLAY



3X.1.2.1 LANGUAGE



3X.1.2.2 BRIGHTNESS



3X.1.2.3 ROTATE



3X.1.2.4 CALIBRATE TOUCH



3X.1.2.5 OS SETTINGS



3X.1.3 SERVICE



3X.1.3.1 ABOUT



3X.1.3.2 MEASURE



3X.1.3.3 CONTROL OUTPUTS



3X.1.3.4 COLOR TEST



3X.1.3.5 MOTOR TYPE



3X.1.3.6 COM STATISTICS



3X.1.4 REMOTE CONTROL



3X.1.5 ASC



3X.1.5.1 ASC OFF



3X.1.5.2 ASC ON



3X.1.5.3 ASC SETTINGS



3X.1.6 GAIN



3X.1.7 CONTROL OPTIONS

Security strategy

The operator interface can be configured with security features to prevent unauthorized changes to the various settings that can be changed from the menu system, such as gain, polarity, etc. Security features are disabled by default but are easily configured and enabled. Access to every menu is individually programmable for one of three authorization levels. The following text describes the customer-configurable security strategy.

Authorization levels

Security features are designed around three authorization levels with three access modes for each level. When security is enabled, the current login authorization level is indicated by a “key” icon in the status bar with the authorization level next to it. Level 1 has the lowest privileges and level 3 has the highest. If security is not in use, these icons will not appear. The three authorization levels and their associated icons are described below.



OPERATOR LEVEL 1 This level requires no password knowledge and is intended to have the most restrictions.



PRIVILEGED OPERATOR/SUPERVISOR This level is intended for operators who are able to make some adjustments.



ADMINISTRATOR The administrator normally has unrestricted access to all menus, but if desired, even this level can be configured for restricted access to any menu as long as it is not related to administrative activities.

Access modes

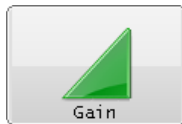
The SETUP button on the Operator Level screen and each menu in the operator interface has programmable access modes for each of the three possible authorization levels. The button appearance of each menu item indicates which access mode is active for the current login authorization level. The possible button appearances are shown below using the GAIN button as an example.



NO ACCESS The “lock” icon superimposed on a button indicates that access is not allowed from the current login authorization level. Pressing the button will prompt for numeric pass code entry and will only allow access if the entered code raises the login authorization level high enough to permit access.



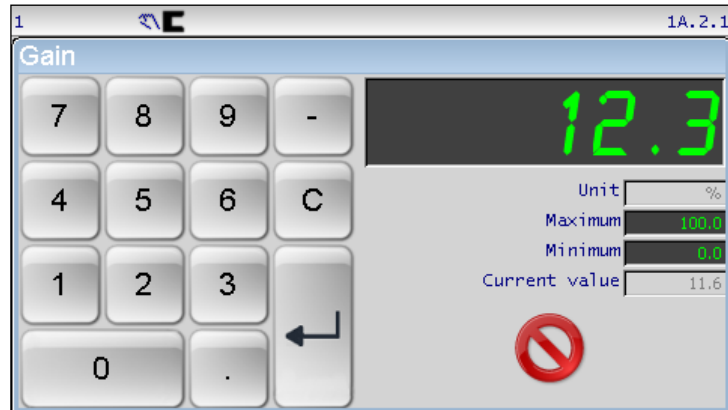
READ ONLY ACCESS The “magnifier” icon superimposed on a button indicates that the menu has read-only access from the current login authorization level. The user is allowed to view the settings but not change them.



FULL ACCESS The button will appear with no access modifier when there are no restrictions for the menu. This is also the button appearance when security is disabled.

Keypad operation

All of the menu screens that require numeric entry use a common keypad control. An example of the gain entry screen is shown below.



New values are entered using the numeric keypad buttons. Entry format similar to data entry using a calculator where new values appear on the right and shift existing data left. The exception to this is when the first button is pressed the displayed value is cleared first.



Some entries accept a decimal point and polarity. When editing values that do not accept decimal points or signed entry, these buttons will be disabled.



The CLEAR button erases the current entry.



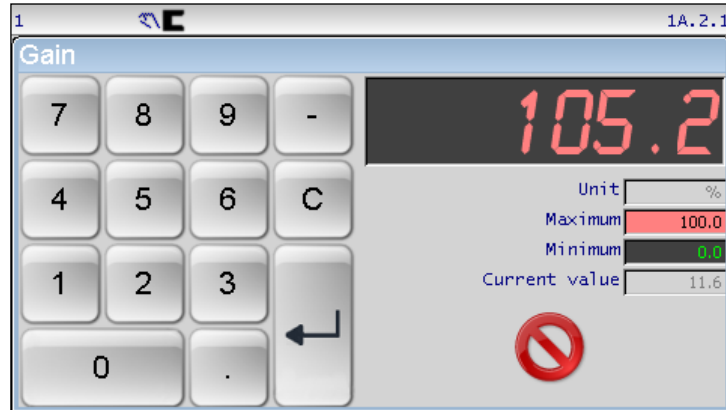
Use the CANCEL button to close the edit window without saving any changes.

continued

KEYPAD OPERATION (continued)



The ENTER button checks the value according to the maximum and minimum limits and applies the new value if it is within acceptable range. If the entered value is outside either of the applicable limits, the entered number and the violated limit are marked in red as shown in the example below.



If this occurs:



Press CLEAR to erase the entry and try again, or,



Press CANCEL to cancel the editing operation and close the window.

Other controls:

Unit optionally shows the active unit of measurement for the edited value.

Maximum shows the maximum allowed value.

Minimum shows the minimum allowed value.

Current Value shows the current setting.

Menu descriptions



SECURITY This submenu provides access to all security related menu items. They are each described below. The security submenu is available from all operation modes.



LOGOUT Logout sets the authorization level to one if security is enabled.

Navigation:



MANUAL / SERVO-CENTER / AUTOMATIC



SETUP



SECURITY



LOGOUT

This button is ignored, if security is not enabled.



LOGIN If security has been enabled, login prompts for numeric code entry. The authorization level is changed according to the entered code.

Navigation:



MANUAL / SERVO-CENTER / AUTOMATIC



SETUP



SECURITY



LOGIN

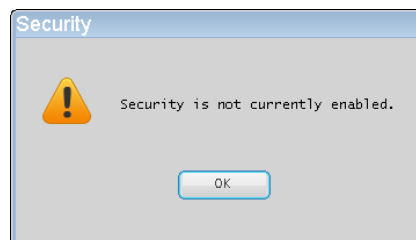


Enter the password and press the ENTER key.



Press the CANCEL button to abort the login process.

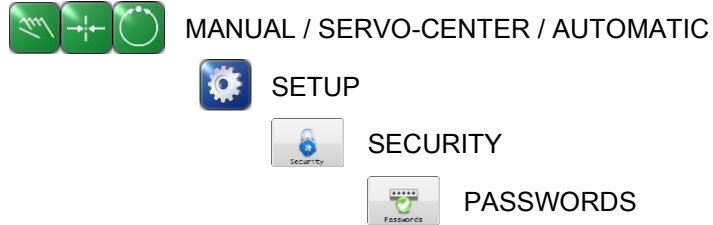
The following message appears if security is not enabled.





PASSWORDS This menu is intended for administration level use to assign passwords for level 2 and level 3 users. Other options configurable from this menu include overall security on/off control and automatic logout operation after a programmable time.

Navigation:



Enable Security Turns security feature on when checked.

Automatically logout after timeout When security is enabled, this option logs out after the specified time. This returns the login level to level 1. Touch the seconds edit control to modify the timeout value.

Access level 2 The level 2 pass code. Touch the edit control to enter or modify the level 2 pass code and enter the new pass code when prompted. The same code must be entered twice for verification.

Access level 3 The level 3 (administrator) pass code. Touch the edit control to enter or modify the level 2 pass code and enter the new pass code when prompted. The same code must be entered twice for verification.



Press to save changes made while in the menu. If **Enable Security** is checked but no level 3 pass code has been assigned, an error dialog will appear. This protection is present to prevent enabling security before having an administrative password in place.



Press to exit the menu without saving any changes.

Note: Pass codes should be from 1 to 9 digits in length.



MENU PROTECTION This administration level menu is used to control the access protection for each individual menu.

Navigation:



MANUAL / SERVO-CENTER / AUTOMATIC



SETUP



SECURITY



MENU PROTECTION

Menu	Level 1	Level 2	Level 3
Setup	No access	Full	Full
Security	No access	Full	Full
Logout	Full	Full	Full
Login	Full	Full	Full
Passwords	No access	No access	Full
Menu Protection	No access	No access	Full
Display	No access	Full	Full
Language	No access	Full	Full
Setup	No access	Full	Full

Buttons: Clear, Default

Each menu is represented in the list control along with the access permission for each of the three authorization levels. Submenu entries are indented according to the menu hierarchy. The first item in the list (Setup) can be used to block access to all setup menus.

To modify an entry, select the menu entry in the list, and then press the button in the columns labeled as level 1, 2, or 3 as needed to cycle through the permission options of Full, Read only, or No access.

The CLEAR button applies full access to all entries.

The DEFAULT button presets the factory default settings.



Press to apply changes and return to the previous screen.



Press to exit this menu without saving changes and return to the previous screen.



DISPLAY The display submenu provides access to the operator interface settings. The display submenu is available in all operation modes.



LANGUAGE The operator interface supports multiple languages. Use this selection to choose from the supported list of languages.

Navigation:



MANUAL / SERVO-CENTER / AUTOMATIC



SETUP



DISPLAY



LANGUAGE



Use the page arrows to move forward or backward to view more choices.



Select the desired language and press ACCEPT to save. The screen will return to the Operator Level screen.



Press to exit without saving changes and return to the previous screen



BRIGHTNESS Adjusts the LCD backlight intensity.

Navigation:



MANUAL / SERVO-CENTER / AUTOMATIC



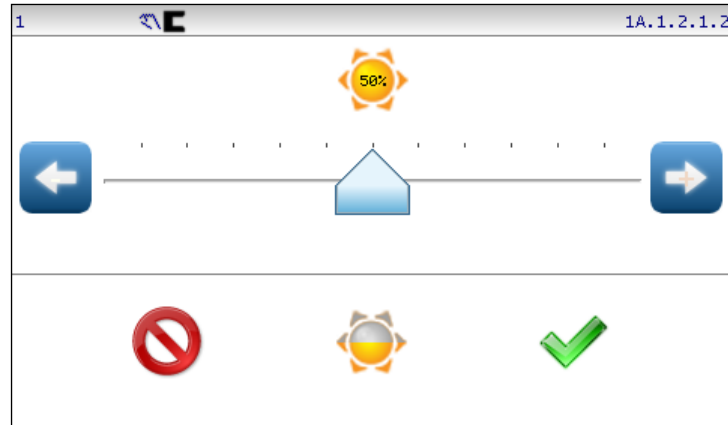
SETUP



DISPLAY



BRIGHTNESS



Press or hold the arrow buttons for fine control of the screen brightness or use the slider handle for quick movement.



Press to set the brightness level to 50%.



Press to save new brightness setting and return to the previous screen.

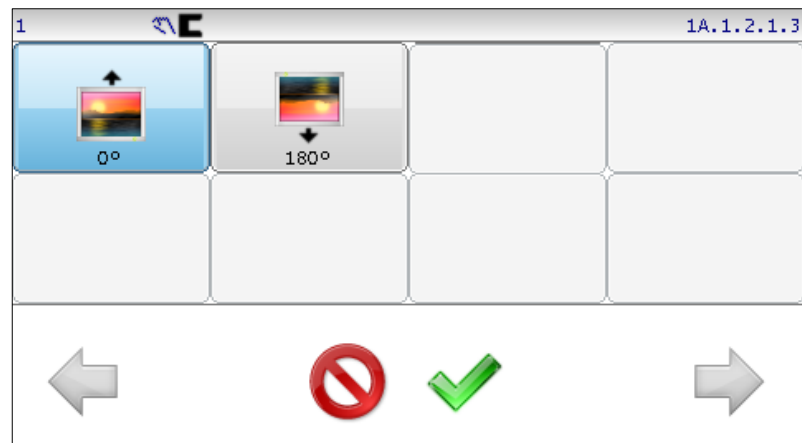
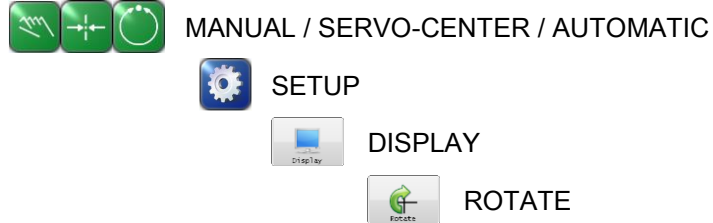




Press to return to the previous screen without saving changes.



ROTATE The operator interface supports only two rotation orientations of the operator interface. Choose from 0°, or 180° settings.

Navigation:



-  Select the desired screen rotation and press the ACCEPT button to save. The screen will go blank for a moment and restart in the new orientation.
-  Press to return to the previous screen without saving changes.



CALIBRATE TOUCH Use this menu to recalibrate the touch panel sensitivity. This is only necessary if button reactions appear to be out of sync with the displayed button locations. The screen will go blank for a moment followed by prompts to touch the screen in two locations.

Note: A stylus is recommended to improve the accuracy of calibration.

Navigation



MANUAL / SERVO-CENTER / AUTOMATIC



SETUP



DISPLAY



CALIBRATE TOUCH



OI SETTINGS Provides access to various operator interface settings.

Navigation:



MANUAL / SERVO-CENTER / AUTOMATIC



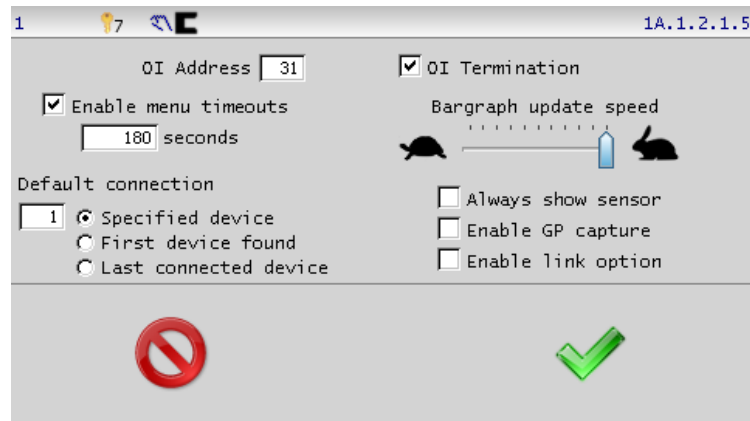
SETUP




DISPLAY



OI SETTINGS



Enable menu timeouts Check this box to force menus to close after a specified number of seconds. To adjust the timeout value, press the seconds control and enter the desired value. Some menus are immune from the timeout option.

 Menus that are immune from timeout will show this icon in the status bar (only when timeouts are enabled).

OI Address Address of the OI in a networked system. Any value between 1 and 30 is valid. The default value of 30 is recommended in a non-networked system.

OI Termination Should always be checked in a non-networked system. In a networked system, should be checked if the OI is at the end of the line and unchecked otherwise.

Bar graph update speed This slider controls the update speed of the sensor signal bar graph on the Operator Level screen.

Continued

OI SETTINGS (continued)

Default Connection To specify which device this OI should connect to when power is applied.

- Specified device – The Operator Interface will always connect to the drive address specified in the associated edit control.
- First device found – The Operator Interface will connect to the first drive it finds in the network.
- Last connected device – Connect to the same drive the Operator Interface was connected to when powered off.

Always show sensor Causes the bar graph on the main screen to show sensor value for the current sensor mode instead of the Servo–Center transducer signal. The default setting (unchecked) displays the Servo–Center sensor value while in the Servo–Center mode.

Enable GP capture Enables the appearance of an additional button in the guide point control area of the Operator Level screen. The GP capture button (available only in Manual and Servo–Center modes) sets the guide point of the active sensor mode to match the current location of the web. This allows guiding to begin at the current web location when the Automatic mode is initiated.

Enable link option Checking this option enables an additional button in the drive select area of the Operator Level screen. When the link option is enabled, and the link mode is active, Auto, Manual, and Servo–Center commands initiated from this Operator Interface are directed to all drives in the network allowing modes of all network devices to be synchronized.



Press to save changes and return to the previous screen.



Press to close this menu without saving changes.



SERVICE The service submenu provides access to maintenance screens. The service submenu is available in all operation modes.



ABOUT This screen provides firmware version information.

Navigation:



MANUAL / SERVO-CENTER / AUTOMATIC



SETUP



SERVICE



ABOUT





MEASURE This menu displays information using two additional tabbed screens. The Main tab displays information about the state of the digital inputs, outputs, sensors, line speed input, and power supply values. The Motor Current tab provides indicators for monitoring motor current. Motor current and line speed are not available in the Fife-200 Web Guiding System. Press the respective tab to bring it forward for viewing. This menu is immune from any configured menu timeouts.

Navigation:



MANUAL / SERVO-CENTER / AUTOMATIC



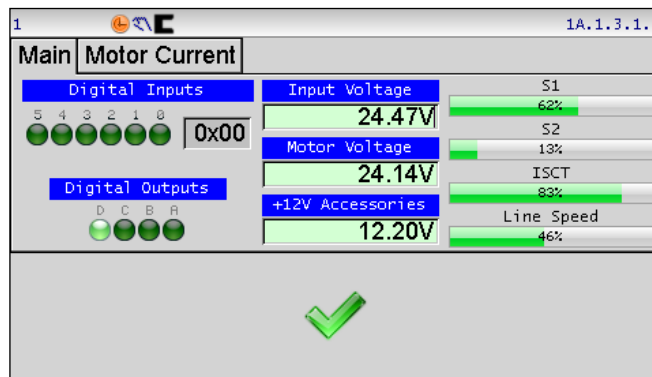
SETUP



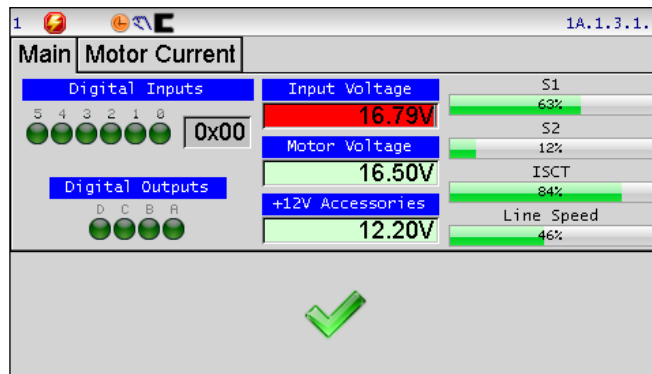
SERVICE



MEASURE



Voltages that are out of range will be marked with a red background as shown below. Notice that the voltage error icon is visible on the status bar. Since voltages are monitored at all times, the status bar can indicate this error regardless of which screen is active.

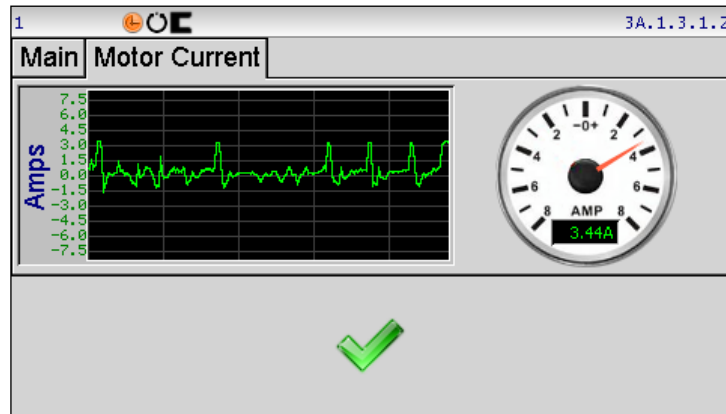


continued

MEASURE (continued)

Note: There are only three digital inputs and one digital output per Fife-200 Web Guiding System. The ISCT bar graph is only valid after Servo-Center mode has been activated at least once after power up. The line speed bar graph is not active.

The Motor Current tab contains an analog/digital ammeter indicating the motor current and polarity. A graph is also present to display history of the recent motor current activity. The Motor Current is not active in the Fife-200 Web Guiding System.



✓ Press to close this menu and return to the previous screen.



CONTROL OUTPUTS This screen contains buttons to test the output signals. Each signal can be individually set or cleared. Only one output per guide is available in the Fife-200 Web Guiding System. Changes made in this screen are temporary, so the outputs resume their normal operation when exiting this screen. This menu is immune from menu timeouts.

Navigation:



MANUAL / SERVO-CENTER / AUTOMATIC



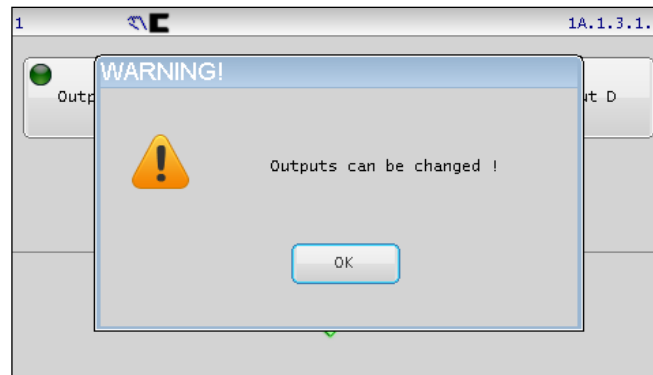
SETUP



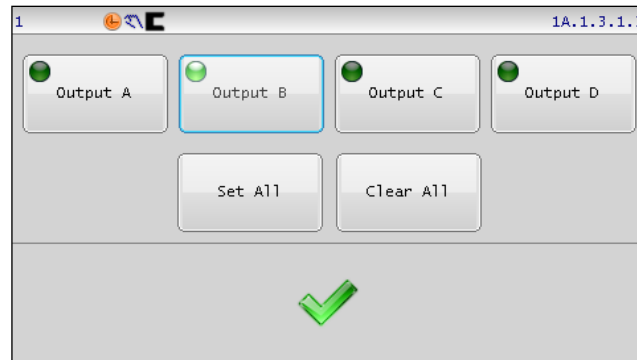
SERVICE



CONTROL OUTPUTS



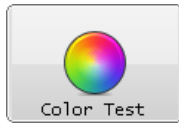
Press OK to close this window.



Press to return to the previous screen. A reminder message will be displayed indicating the digital outputs will resume their normal operation.

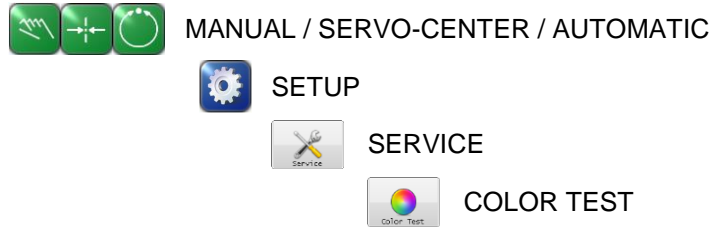


WARNING - Death or injury can result from unexpected movement. The web guiding system has four independent outputs that can be connected to other components into which the Fife-200 Web Guiding System is installed. Take appropriate precautions to ensure no one may be killed or injured by activation of any of these outputs.

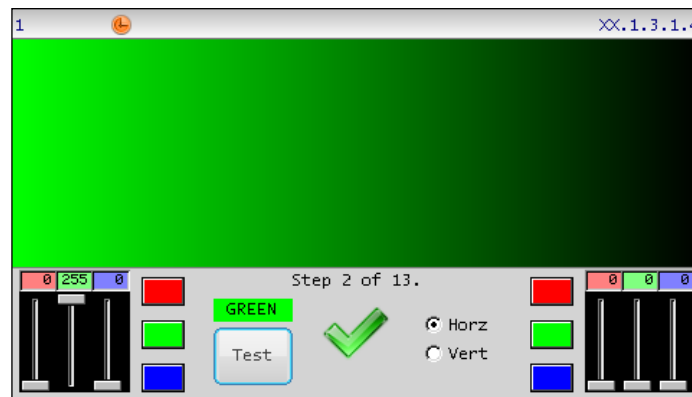


COLOR TEST This menu is used to verify display screen control signals by providing configurable color gradient screens.

Navigation:



The six slider controls can be used to vary the red, green, and blue brightness for the left and right sides of the screen. (If the Vertical mode is selected, the sliders control the top and bottom colors respectively.)



Test The Test button cycles through a sequence of gradient settings which would most likely identify hardware related signal issues.

Horz/Vert This control selects the gradient direction (horizontal or vertical).

The red, green, and blue buttons on each side cycle through an 8-bit binary sequence selected to drive each signal separately in the color circuitry. Small changes present in this sequence typically produce no visually discernable screen change and are only used in conjunction with more detailed service activities.

Color values vary from 0 to 255, with a value of zero representing no color and 255 representing maximum color. To specify a color value, touch the respective red, green or blue edit control and enter the desired value.

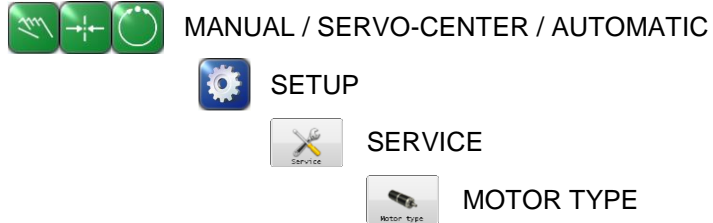


Press to return to the previous screen.



MOTOR TYPE This menu is used to view the configured motor type.

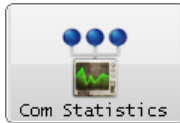
Navigation:



The resulting screen will display the currently configured motor type as shown in the example below. The motor type for your system may be different than that shown here.

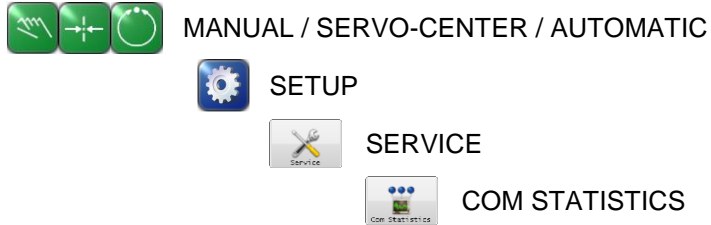
ID	Model	Mfg number	Part number
0	Model - None	None - 0	None
250	FIFE-200	42M704L530	C200405-001

Press to close this menu.



COM STATISTICS This menu is used to view the communication statistics maintained by each device.

Navigation:



The Operator Interface communicates with one or more motors using a serial communication bus. The bus topology is a half-duplex multi-drop configuration. The COM STATISTICS screen shows a live update of the running network communication statistics as shown in the following example.

	OI	MC
Sent	128295	104123
Received	119790	112068
Rcv-Mine	119643	
Rcv-Not mine	0	7912
Buffer full	0	
Bad checksum	2	0
No reply	26	
Token cycles	0	

Sent Indicates the total number of packets sent.

Received Indicates the total packets received.

Rcv-Mine Indicates the total number of packets received that were addressed to the respective device.

Rcv-Not mine The number of packets received (and discarded) because they were not addressed to the respective device.

Buffer full Indicates the number of packets discarded because the devices receive buffers were full.

Bad checksum Each packet received is verified using a checksum algorithm. Packets that fail the checksum validation are discarded. Checksums can occur at a low frequency under normal circumstances due to noise, power cycles, etc. A rapidly increasing checksum count is an indication of a communication problem.

continued

COM STATISTICS (continued)

No Reply Counts the occurrences where the Operator Interface expected a reply but did not receive one. These errors occur occasionally under normal circumstances but, like the checksum fault, should not increase rapidly.

Token Cycles This counter will only increase in systems containing multiple Operator Interfaces. It signifies the activity conducted by multiple Operator Interface devices to share access to the communication bus.

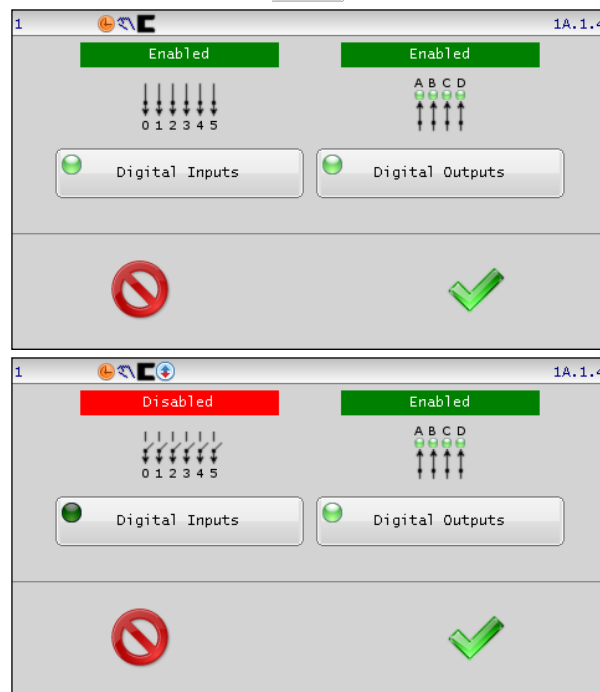


Press to return to the previous screen.






REMOTE CONTROL This menu is used to enable or disable influence from the digital inputs and turn off the digital output signals. This menu is immune from menu timeouts. An icon is displayed on the status bar if inputs, outputs, or both inputs and outputs are disabled. The Fife-200 Web Guiding System has three inputs and one output per guide.

Navigation:



Status bar indicators:

-  Digital inputs disabled (red down arrow).
-  Digital outputs are disabled (red up arrow).
-  Both input and output signals are disabled (red arrows).



Press to save changes and return to the previous screen.



Press to close this menu without saving changes.



WARNING – Death or injury can result from unexpected movement. The Fife-200 Web Guiding system has one independent output per guide that can be connected to other components into which the Fife-200 Web Guiding System is installed. Take appropriate precautions to ensure no one may be killed or injured by activation of any of these outputs.



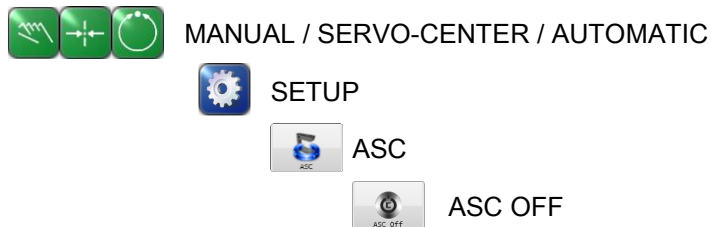
ASC Automatic Sensor Control (ASC) can be used under certain conditions where it is desirable to ignore sudden sensor input changes. A typical use for ASC is to ignore a “tearout” in the web preventing the guide from reacting to the subsequent large sensor signal change.

ASC can be configured and enabled separately for each sensor mode. To prevent unintended ASC activation, it must be enabled for each sensor mode that is needed using the ASC SETTINGS menu before the ASC ON button will work.



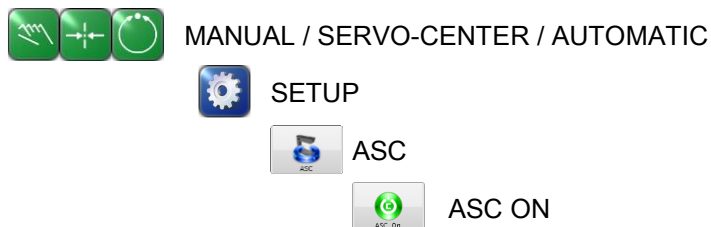
ASC OFF Disable ASC operation for the selected sensor mode. This button has no effect if ASC is already off or has not been configured.


Navigation:




ASC ON ASC ON enables ASC processing, if ASC control has been enabled in the configuration screen for the active sensor mode. Each sensor mode can be individually configured with different ASC settings. The availability of ASC for each sensor mode is among the configurable settings.

Navigation:



 This icon will be displayed in the status bar when ASC is enabled.

 The ASC icon will change to this when ASC is enabled and the configured ASC threshold has been triggered. When ASC is enabled, this icon works in manual mode also which provides an easy way to view the ASC trigger thresholds.

Note: ASC must be enabled for the active sensor mode before the ASC ON function will work.



ASC SETTINGS This menu controls all programmable aspects of ASC operation for each sensor mode. The first three tabs have identical sets of controls for each sensor mode. The last tab contains polarity controls to set the polarity used for each sensor signal during ASC processing.

Navigation:



MANUAL / SERVO-CENTER / AUTOMATIC



SETUP



ASC



ASC SETTINGS

Touch the tab controls at the top as needed to switch to the desired page before making changes.

ASC State The ASC State button enables or disabled the availability of ASC use for the selected sensor mode. The LED displayed on the button indicates the present state. Press the button to toggle the ASC availability for this sensor mode on or off.

Source Selects the sensor that is monitored for ASC thresholds. Typically this is the same sensor used for guiding but in some applications it could be desirable to monitor a different input. Source input choices include the sensor signal S1, S2, S1+S2, or S1S2. Typically, only S1 is available for Fife-200 Web Guiding Systems unless a line sensor is enabled.

continued

ASC SETTINGS (continued)

Mode The mode setting controls how the source signal threshold is processed. These modes are used to configure ASC operation for specific application requirements. There are six modes available:

- | | |
|-------------|---|
| Above + | Signal is greater than the positive threshold. The negative threshold is not used. |
| Below - | Signal is less than the negative threshold. The positive threshold is not used. |
| Outside +/- | Signal is less than the negative threshold or greater than the positive threshold. |
| Below + | Signal is less than the positive threshold. The negative threshold is not used. |
| Above - | Signal is greater than the negative threshold. The positive threshold is not used. |
| Inside +/- | Signal is greater than the negative threshold AND less than the positive threshold. |

ASC Threshold 2 (Neg) The ASC signal negative threshold. Touch the threshold value to open an edit screen to change it.

ASC Threshold 1 (Pos) The ASC signal positive threshold. Touch the threshold value to open an edit screen to change it.



Press to save changes and return to the previous screen.



Press to exit without saving changes and return to the previous screen.

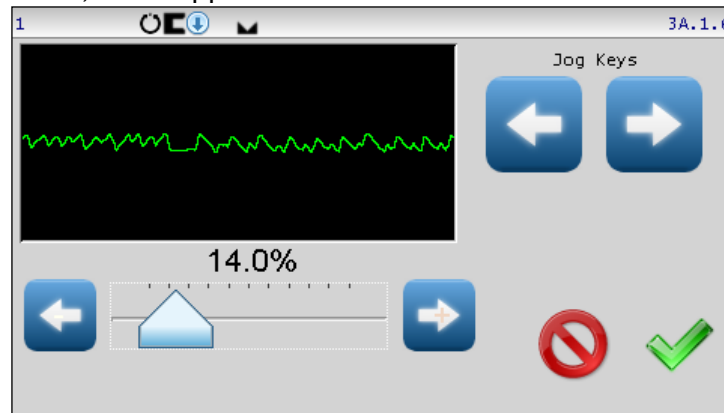


GAIN The gain menu is used to view or set the system gain for the active sensor mode.

Navigation:



If the gain screen is accessed while the system is in Automatic mode, it will appear as shown below.



Use the smaller arrows buttons to decrease or increase the system gain, or for fast gain changes use the slider control. The gain value is applied as soon as it is changed while in this menu, so the effects of gain changes can be observed if the system is in Automatic mode. The graph area shows the amplified output of the active sensor signal to provide feedback about guide movement as the gain is changed.



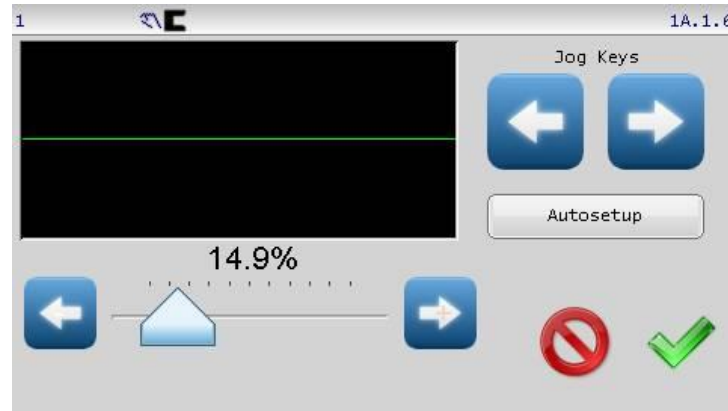
Press to save changes and return to the previous screen.




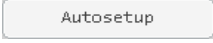
Press to exit without saving changes and return to the previous screen. If the gain has been changed, it will be restored to its previous value.

GAIN (continued)

If the system is in Manual mode, the Gain screen will have an additional button (as shown below) to allow the Autoseup function to be initiated from this screen, if desired.



When the gain menu is accessed from Manual mode, the Autoseup button will be shown in one of the following two states, depending on the sensor signal level of the active sensor mode:


<p>Autoseup is available: The system is in Manual mode and the active sensor signal is within the allowable range.</p> <p> button available</p>	<p>Autoseup is NOT available: The system is in Manual mode but the sensor signal is not within the allowable range.</p> <p> button not available</p>
--	---

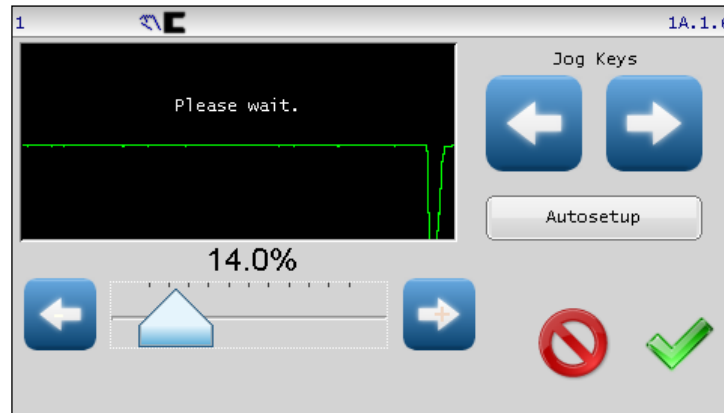




If the Autoseup button is not available, use the larger arrow buttons to jog the guide in either direction, until the sensor signal is within the allowable range and the Autoseup button is available.

Continued

GAIN (continued)

 Press Autosetup to initiate the Autosetup cycle. The guide will move a short distance and the system gain value will be automatically set. The screen will display `Please wait` during this operation as shown in the example below.



-  Press to save changes and return to the previous screen.
-  Press to exit without saving changes and return to the previous screen. If the gain has been changed, it will be restored to its previous value.



WARNING – Death or injury can result from unexpected movement. Autosetup operation causes guide movement. Take appropriate precautions to ensure no one is in the vicinity of the guide path of travel.



SC GAIN The Servo-Center gain menu is used to view or set the gain for Servo-Center operation.

Navigation:



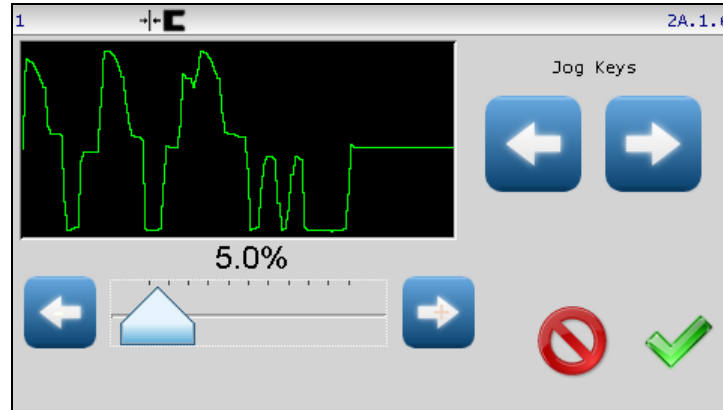
SERVO-CENTER



SETUP



SC GAIN



The larger arrow buttons may be used to jog the guide in either direction, if desired.



Use the smaller arrows buttons to decrease or increase the system gain or for fast gain changes, use the slider control. The gain value is applied as soon as it is changed while in this menu, so the effects of the Servo-Center gain changes can be observed. The graph area shows the Servo-Center position to provide feedback about guide movement as the gain is changed.



Press to save changes and return to the previous screen.



Press to exit without saving changes and return to the previous screen. If the Servo-Center gain has been changed, it will be restored to its previous value.



WARNING - Death or injury can result from unexpected movement. Servo-Center operation causes guide movement. Take appropriate precautions to ensure no one is in the vicinity of the guide path of travel.



SENSOR SETUP The factory sensor settings are for webs that are 100% opaque using the installed sensors. The sensor setup menu is used to calibrate the Fife-200 Web Guiding System to maximize sensor signal sensitivity when used with webs that are not totally opaque. This procedure involves teaching the Fife-200 Web Guiding System using a sample of the web material.

When using the SE-47 sensor, the sensor amplifier must first be calibrated before calibrating the controller. Each guide typically only has sensor S1 unless line guide mode is selected.

SE-47 sensor setup

If using other FIFE sensors, skip to section 4-28.

This procedure adjusts the transmitted light intensity to prevent the received light signal from saturating when the sensors are fully uncovered.

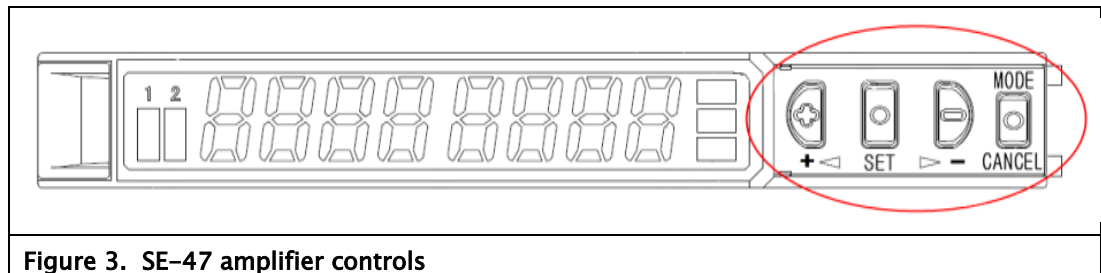


Figure 3. SE-47 amplifier controls

Lift the small cover on the SE-47 amplifier to access the control buttons. Control button labels are shown in [brackets] below.

i If you navigate the menu out of order, you will need to recycle the power to the FIFE-200 controller and start from the beginning.

- 1) Make sure the sensor heads are fully uncovered.
- 2) Press [MODE] three times until **Pro** is shown in the yellow mode indicator and the red digits display **Pro**.
- 3) Press [SET], the display should show **Pro1**.
- 4) Press [SET], the display should show **Pro1SPEd**.
- 5) Press [+], the display should show **Pro1dELY**.
- 6) Press [+], the display should show **Pro1HYS**.
- 7) Press [+], the display should show **Pro1SHFt**.
- 8) Press [+], the display should show **Pro1PctL**.

continued

SENSOR SETUP (continued)

- 9) Press [SET] and the display will show the present power setting. There are three power settings: Low, Medium, and High.

Low power = "Pctl L-P"

Medium power = "Pctl n-P"

High power = "Pctl H-P"

Select a power mode by pressing [+] or [-]. Press [SET] when finished.

- 10) The display will now show the received signal value in green with a saturated value of 4000 and the percent output of the transmitted light will be shown in red. 4000 100P

Use [-] to decrease the transmitted light and [+] to increase the transmitted light until the green display shows between 3500 and 3800.

If the green display will not go below 4000 or up to 3800, then a different transmitted power setting range must be selected (Low, Medium, or High).

Press [SET] to save the value.

- 11) The display will now show Pro1PctL

Press [MODE/CANCEL] three times to return to normal operation.

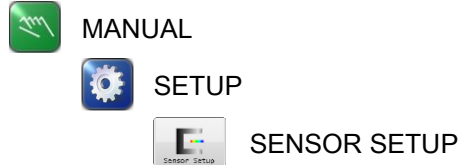
In normal mode, with the sensors uncovered, verify the received signal shown in green is not saturated at 4000.

- 12) Continue with setup procedure on the following pages.

Sensor setup

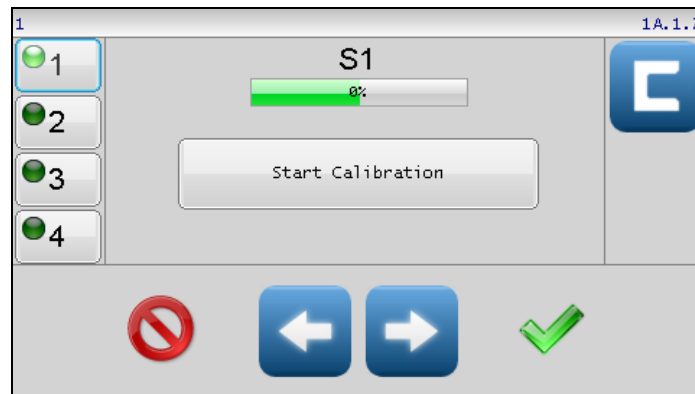
If you are using the SE-47 sensor, you must first complete the procedure starting in section 4-26. Then continue here.

Navigation:



The Fife-200 Web Guiding System stores separate calibration data for the S1 and S2 sensor inputs so the procedure should be done on each sensor input that will be used.

The Fife-200 Web Guiding System can store/recall up to four sets of calibration settings for S1 and S2 supporting the possibility to store and quickly recall sensor settings for four different web opacities.



Button descriptions



CALIBRATION SET These buttons select one of four sets of calibration values. Only one calibration set may be active at any given time with the active set indicated by the green LED on the button face. Set 1 is active by default. Touch the button for the desired set to make it active. Note: This change takes effect immediately while in this menu but will only become permanent if the ACCEPT button is pressed to save it.



Note: If calibration set 2, 3, or 4 is in use, the sensor button on the Operator Level screen will reflect this by displaying a 2, 3, or 4 as shown here. When calibration set 1 is active, the sensor button on the Operator Level screen will not display a number.

SENSOR BUTTONS (continued)



The arrow buttons are used to jog the guide in either direction. This can be used to move the web in and out of the sensor during the calibration process.



Use the sensor select button to select the sensor input channel before calibration. Pressing this button alternates between the S1 and S2 sensor input channels.



Press ACCEPT to save the results of the last sensor calibration and return to the previous screen. This button is also required to save the results of selecting a different calibration set.



Press CANCEL to exit without saving the results of the last calibration, and return to the previous screen. Any changes to the sensor calibration set are restored to previous setting.

Calibration procedure

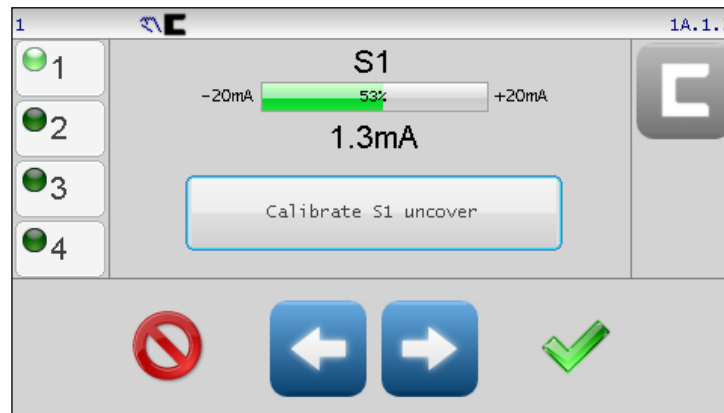


Select which set of calibration values will be used.



Select S1 or S2 sensor input.

Press the START CALIBRATION button. The bar graph indicator will be rescaled to show the full signal range of -20mA to $+20\text{mA}$ on the selected sensor input. The sensor current will also be displayed under the bar graph as shown is the example screen below.



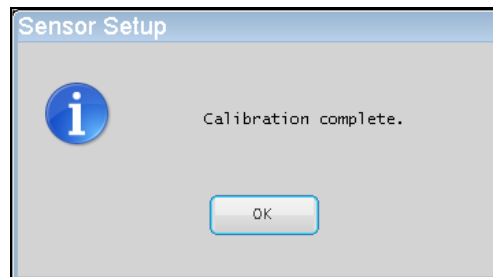
continued

SENSOR CALIBRATION (continued)

Move the web material completely out of the sensor field of view and press the CALIBRATE S1 UNCOVER button.

Move the web material into the sensor field of view until the entire proportional band of the sensor is covered, and press the CALIBRATE S1 COVER button.

If the calibration was successful, the following message will appear.



Press OK to close this window.

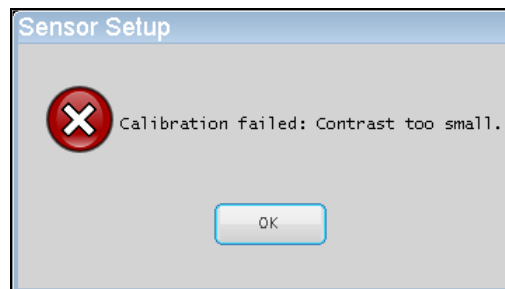
If other calibrations (for example, the opposite sensor channel) need to be done, proceed with sensor selection and repeat the calibration process.



Otherwise, press ACCEPT to save these changes and return to the previous screen.

Note: If a different calibration set is chosen after a successful calibration has been completed, it will be permanently saved before switching to the new calibration set. In this case, exiting this menu with the CANCEL button will not restore this calibration to its previous setting.

If the sensor signal difference between the uncovered and covered states is too low, the web opacity is beyond calibration compensation and the message shown below will be displayed.



Press OK to close this window.



AUTOSETUP The Fife-200 Web Guiding System gain and polarity can be set manually as described in other areas of this manual. Using this menu however, the system gain and polarity can be determined automatically.

Navigation:



MANUAL



SELECT SENSOR MODE



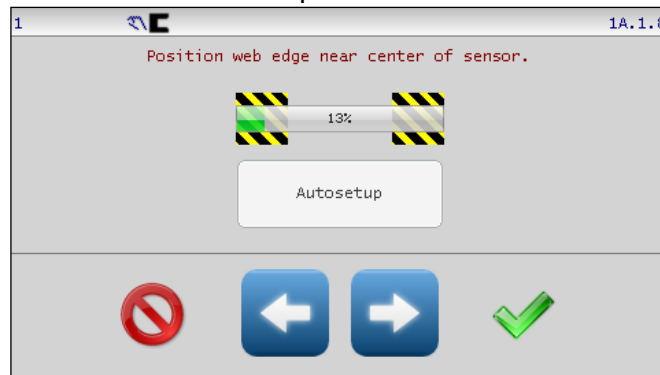
SETUP



AUTOSETUP

Note: The autosetup procedure should be done with the web at a standstill.

Autosetup is performed using the sensor mode that has been selected from the Operator Level screen. Before autosetup can begin, the web must be within the selected sensor field of view. The bar graph indicator shows the acceptable limits for the sensor signal and the Autosetup button will remain disabled until the correct conditions are present.



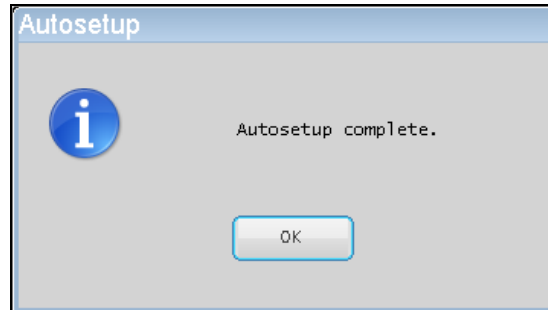
Use the jog buttons to position the web edge near the center of the sensor proportional band as shown below.





continued

AUTOSETUP (continued)

Press the Autosetup button to start. The guide will move a short distance as it completes the autosetup process. Successful completion is indicated by the message shown below.



Press OK to close this window.

-  Press to return to the previous screen. The gain and polarity settings are stored automatically when autosetup completes.
-  The gain and polarity settings are stored automatically when autosetup completes. Pressing the CANCEL button does not restore previous gain and polarity settings.



WARNING – Death or injury can result from unexpected movement. Autosetup operation causes guide movement. Take appropriate precautions to ensure no one is in the vicinity of the guide path of travel.

Note: For most installations, the Autosetup routine sets the system gain at the proper level for good guiding performance. However, in some applications, for optimal guiding performance, it may be desirable to manually adjust the system gain. Refer to GAIN in the Menu Description section 4-22.



GUIDE SETTINGS The guide settings screen provides controls to set the gain, polarity and dead band for all modes of operation. The jog polarity is also located on this screen.

Navigation:



MANUAL



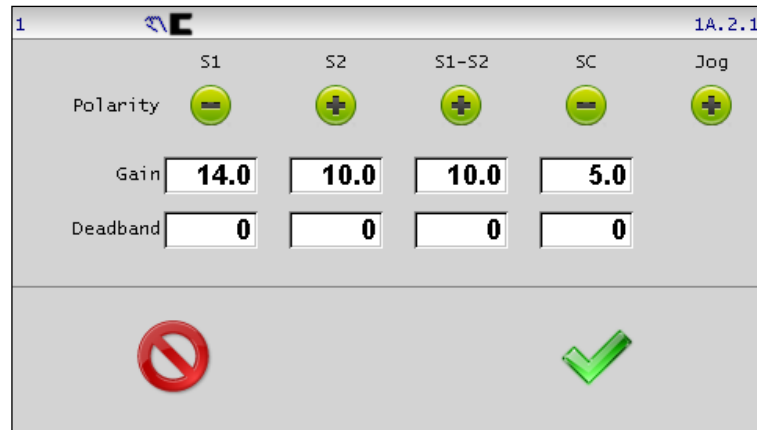
SETUP



Page forward



GUIDE SETTINGS



Polarity – The polarity buttons display the current polarity settings active for Servo-Center, guiding (each sensor mode), and jog operations. Using these controls polarity can be set manually. To change polarity, touch the desired polarity button to toggle between positive and negative settings.

The autoseup procedure for each sensor mode configures polarity automatically so changes to the sensor mode polarities are typically not needed.

Polarity changes are used to correct the situation if guide correction moves in the wrong direction. Jog polarity controls the direction of guide movement when the jog buttons are pressed.

continued

GUIDE SETTINGS (continued)

Gain The gain controls display the gain settings for each mode of operation. The gain values are set automatically if the autotsetup procedure is used. This screen provides controls to support manual gain tuning. To edit a gain setting, touch the desired gain value to open an edit window. An example edit window is shown on page 3-14.

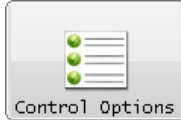
Dead band The dead band value provides a configurable zone around the system guide point where no guiding correction occurs. A dead band setting of zero provides the most accurate guiding but in some applications where webs have ragged edges, dead band can be used to prevent guide reactions to these conditions. To edit a dead band setting, touch the desired dead band value and enter the new value in the displayed edit window.



Press to save any changes made.



Press to exit without saving any changes.



CONTROL OPTIONS This menu provides the controls used to limit operation modes, sensor modes, and system guide point shift controls on the Operator Level screen.

Navigation:



MANUAL



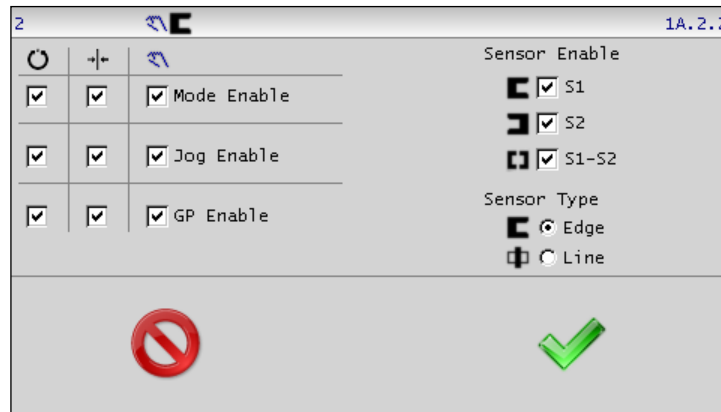
SETUP



Page forward



CONTROL OPTIONS



Mode Enable These checkboxes enable or disable use of automatic, Servo-Center, and manual operation modes. A check-mark in the box indicates that the mode is available. When a mode is disabled, its corresponding button on the Operator Level screen is removed. At least one mode must remain enabled at all times. The menu will not permit saving a configuration with all checkboxes cleared.

Jog Enable These three checkboxes enable or disable jog operations in automatic, Servo-Center, and manual operation modes. A check-mark in the box indicates that jogs are permitted. When jogs are disabled, the jog buttons on the Operator Level screen are disabled.

GP Enable These checkboxes enable or disable the system guidepoint controls on the Operator Level screen in automatic, Servo-Center, and manual operation modes. A check-mark in the box indicates guide point controls are enabled. When disabled, the guide point controls on the Operator Level screen are disabled. This control does not affect guide point control from the digital inputs.

continued

CONTROL OPTIONS (continued)

Sensor Enable These controls configure which sensor modes can be selected using the SENSOR button on the Operator Level screen. The menu will not permit saving a configuration with all sensor modes disabled.

Sensor Type Used to select the desired icon appearance for sensor modes. The default setting uses a standard “C” style sensor appearance, but “line” sensors can be specified when applicable.

Note: When line sensor icons are selected, the center guiding mode consisting of S1–S2 is disabled since it has no purpose in line guiding applications.



Press to save any changes made to this screen.



Press to exit without saving any changes.



POWER ON MODE This menu controls the Power On mode for the Fife-200 Web Guiding System. Default operation returns to the mode that was active when power was removed, however, configuration choices in this screen allow any mode to be selected as the Power On mode.

Navigation:



MANUAL



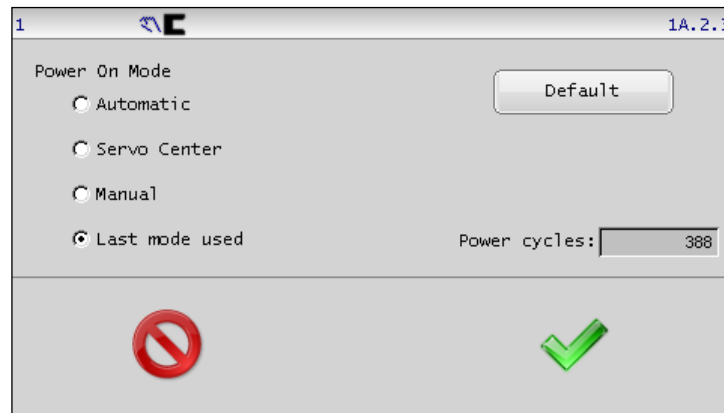
SETUP



Page forward



POWER ON MODE



Default The default button selects the factory setting, which is Last mode used.

Power cycles shows the number of power cycles the system has recorded.



Press to save changes and return to the previous screen.



Press to close this screen and return to the previous screen without saving any changes.



WARNING - Death or injury can result from unexpected movement. Selecting Automatic or Servo-Center modes for power up options can cause guide movement when power is applied.

Take appropriate precautions to ensure no one is in the vicinity of the guide path of travel when power is applied to the Fife-200 Web Guiding System.



BACKUP Backup is used to make a copy of all configurable settings. These settings can be recalled using the RESTORE menu.

Navigation:



MANUAL



SETUP

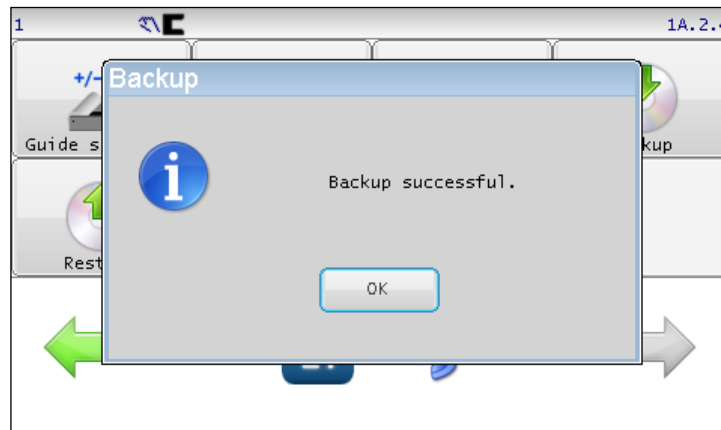


Page forward

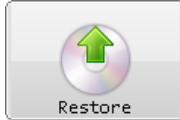


BACKUP

If a backup already exists, the system will ask for confirmation before replacing it. The screen below will be shown after the backup completes. Press the OK button to continue and return to the previous menu screen.



Press OK to close this window.



RESTORE The restore function reloads all configurable options from a backup image if available.

Navigation:



MANUAL



SETUP

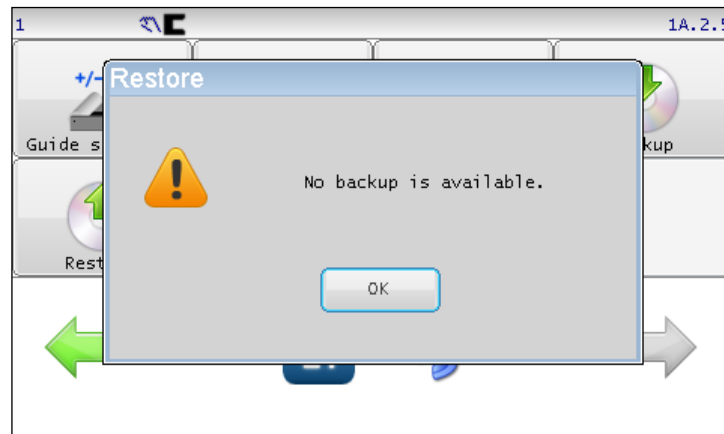


Page forward



RESTORE

If no backup image is present or it is corrupted, the following message will appear. Restore is not possible in this case.



Press OK to close this window.

Note: RESTORE reloads all user-configurable settings such as gains, polarities, etc. In order to prevent unintended password modification. RESTORE does not replace active passwords from the backup image.



HARDLOCK Hard lock modifies actuator reaction while in manual mode. Normal manual posture removes all motor drive signals. In some applications, forces due to gravity or web tension can cause unwanted actuator movement when the motor is not driven. The hard lock option changes manual operation so the actuator position is actively maintained to prevent movement from outside forces while in manual mode. Hard lock, if enabled, is applied in all cases where manual posture is active, such as when external lock from the digital inputs is active.

Navigation:



MANUAL



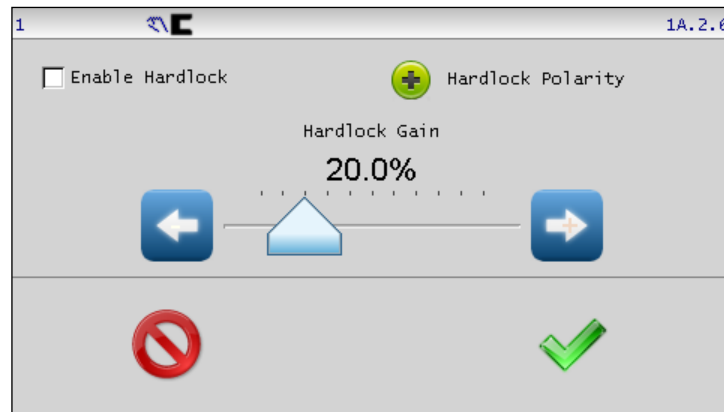
SETUP



Page forward



HARDLOCK



Enable Hardlock Check this box to turn the hard lock feature on.

Hardlock Polarity Sets the hard lock correction polarity.

Hardlock Gain Sets the hard lock control loop gain. This can be changed with the slider control or with the arrow buttons for finer control.



Press to save any changes made to this screen.



Press to exit without saving any changes.



NAME Use the name menu to enter a drive name. The specified name can be 15 characters or less and is displayed on the Operator Level screen. This can be useful in a networked environment to identify the connected drive.

Navigation:



MANUAL



SETUP



Page forward



NAME



Enter up to 15 characters to describe the drive. Edit functions include:

del Delete characters to the right of the cursor.

back Backspace function deletes characters to the left of the cursor.

The cursor can be moved by touching the desired position in the edit control.



Press to save any changes made to this screen.



Press to exit without saving any changes.



NETWORK This menu is used for network administration. It is used when commissioning a network or replacing a device in the network. All devices in the network can be configured from any Operator Interface using this menu.

Navigation:



MANUAL



SETUP



Page forward



NETWORK

The initial screen shows a list of all devices present in the network. Select a device to be presented with configuration options for it.



continued

NETWORK (continued)

The screenshot shows a configuration window with a title bar containing the number '2' on the left and '1A.2.8' on the right. Below the title bar, there is a 'Device address' label followed by a text input field containing the number '2'. Below that is a 'Name' label followed by a text input field containing 'Rewind 1'. At the bottom of the window, there are two large icons: a red circle with a diagonal line (prohibited) on the left and a green checkmark on the right.

Device address Used to assign a new address to the device. Each Fife-200 Web Guiding System controller takes four consecutive addresses. The starting address of each controller must be either 1, 5, 9, 13, 17, 21, or 25. Selecting an address other than listed above will cause the controller to choose the lowest address closest to one of the above addresses. This only applies when changing the address and not when changing the name.

Name This control only appears when configuring a drive. Use it to specify the drive name which will appear on the Operator Level screen when connected to this drive.

Termination Termination should only be enabled on devices connected to the network ends. In a single Operator Interface and single Fife-200 Web Guiding Controller configuration, both devices should have termination enabled.

Note: When assigning network addresses, it is recommended to start the controller addresses at 5 or higher. Leaving address 1 vacant facilitates replacing or adding a new controller. Since the default controller address is 1, it will initially appear at this address where it can be easily reassigned.



Press to save any changes made to this screen.



Press to exit without saving any changes.

Digital input matrix

There are three digital inputs available per guide for remote control functions. The following table describes the input states to change mode.

MODE	INPUTS		
	2	1	0
EXTERNAL LOCK	-	-	1
MANUAL	-	1	-
AUTOMATIC	1	-	-

0 = LOW

1 = HIGH

- = IGNORE

Note: To ensure that a command is properly executed, all pertinent inputs for each command must be switched high or low within 20 mS of each other and maintained for at least 30 mS.



WARNING – Death or injury can result from unexpected movement.

Autosetup operation causes guide movement. Take appropriate precautions to ensure no one is in the vicinity of the guide path of travel.

Digital output matrix

There is one digital output per guide initially configured as an alarm for Loss of Null.

	OUTPUTS*
STATUS	A
LOSS OF NULL (AUTOMATIC MODE)	1

* Digital outputs are active low.

1 = ACTIVE

- = IGNORE

System notes

1. Disconnect power from the Fife-200 Web Guiding System before connecting or disconnecting any cables.
2. Sensor selection changes are allowed in Manual and Servo-Center modes, only.
3. In Automatic mode, jog commands on the keypad are allowed (if enabled in the Set Jog Enable menu).
4. In Automatic and Manual modes, the bar graph in the Control Panel indicates the signal level of the selected sensor(s).
5. In Servo-Center mode, the bar graph in the Control Panel indicates the position of the guide in the range of travel.
6. When any command is detected on the Digital Port, a down arrow icon is displayed at the top of the display.
7. The External Lock command is used to temporarily disable all motor commands. If External Lock is commanded while in Automatic mode, when the External Lock command is removed, the system reverts back to normal guiding operation. The External Lock command is not to be used as an E-stop.

Troubleshooting

Fault Diagnostics – Fault Rectification

An incorrect setting on the Fife-200 Web Guiding System is often the cause of incorrect or undesirable guiding characteristics. Faults and the procedures for rectifying the faults are described below.

Fault Description	Probable Cause	Remedy	Reference
Actuator does not move in Automatic mode.	System Gain set too low. or Sensor Calibration is not correct.	Increase the System Gain. Perform Sensor Setup.	1X.1.6, System Gain or 3X.1.6, System Gain 1X.1.7, Sensor Setup
Actuator is unstable in Automatic mode.	System Gain set too high. or Sensor Calibration is not correct.	Decrease the System Gain. Perform Sensor Setup.	1X.1.6, System Gain or 3X.1.6, System Gain 1X.1.7, Sensor Setup
Actuator moves the wrong direction in Automatic mode.	Guide Polarity is incorrect. or Incorrect sensor mode selected. or Sensor Calibration is not correct.	Perform Autosetup or Change the Guide Polarity manually. Select MANUAL mode, then verify the correct sensor mode is selected. If necessary, press the SENSOR key to select the correct sensor mode. Perform Sensor Setup.	Autosetup Configuration, 1X.1.8, Autosetup or Manual Configuration, 1X.2.1 Guide Settings 1X.1.7, Sensor Setup

Actuator does not move in Servo-Center mode.	Servo-Center Gain is set too low.	Increase the Servo-Center Gain.	2X.1.6, Servo-Center Gain
Actuator is unstable in Servo-Center mode.	Servo-Center Gain is set too high.	Decrease the Servo-Center Gain.	2X.1.6, Servo-Center Gain
Actuator moves to either end of the stroke in Servo-Center mode and stays there.	Servo-Center Polarity is set incorrectly.	Select MANUAL mode then change the Servo-Center Polarity.	Guide Settings, 1X.2.1, Servo-Center Polarity

Service

Return Shipment Instructions

If it is necessary to return the Fife-200 Web Guiding System for service, care must be taken to properly package the unit to prevent damage during shipment. If possible, use the original shipping containers.

Service Requests and Replacement Parts

When ordering replacement parts, please indicate, where possible, part number, drawing number and model description.

To request service or to get replacement parts, contact one of the addresses listed below.

Maxcess
222 West Memorial Rd.
Oklahoma City, OK, 73114, USA
Tel +1.405.755.1600
Fax +1.405.755.8425
www.maxcessintl.com

Fife-Tidland GmbH
Max-Planck-Strasse 8
65779 Kelkheim
Deutschland
Telefon: +49.6195.7002.0
Fax +49.6195.7002.933
www.maxcess.eu

Maxcess (Zhuhai) Industrial Automation Equipment Co., Ltd.
#7 Warehousing Factory
Hengli Industrial Park
#5 Land of Zhuhai
Free Trade Zone
Guangdong PR 519030
China
Tel +86.756.881.9398



**NORTH, CENTRAL
AND SOUTH AMERICA**

Tel +1.405.755.1600
Fax +1.405.755.8425
sales@maxcessintl.com
www.maxcessintl.com

INDIA

Tel +91.22.27602633
Fax +91.22.27602634
india@maxcessintl.com
www.maxcess.in

**EUROPE, MIDDLE EAST
AND AFRICA**

Tel +49.6195.7002.0
Fax +49.6195.7002.933
sales@maxcess.eu
www.maxcess.eu

JAPAN

Tel +81.43.421.1622
Fax +81.43.421.2895
japan@maxcessintl.com
www.maxcess.jp

CHINA

Tel +86.756.881.9398
Fax +86.756.881.9393
info@maxcessintl.com.cn
www.maxcessintl.com.cn

**KOREA, TAIWAN,
AND SE ASIA**

Tel +65.9620.3883
Fax +65.6235.4818
asia@maxcessintl.com