

GMA-BL-a-b-ccc-d-2-ISCT-A

– (ccc)=STROKE

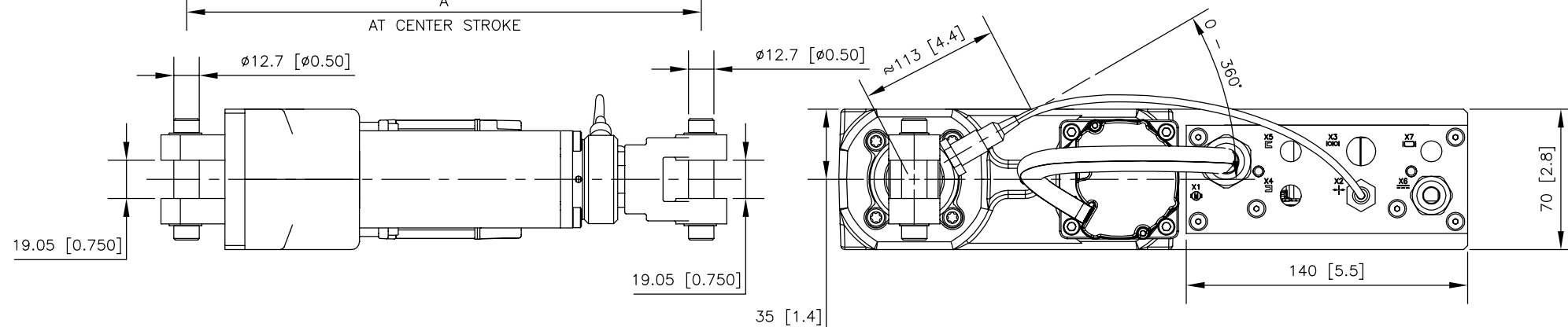
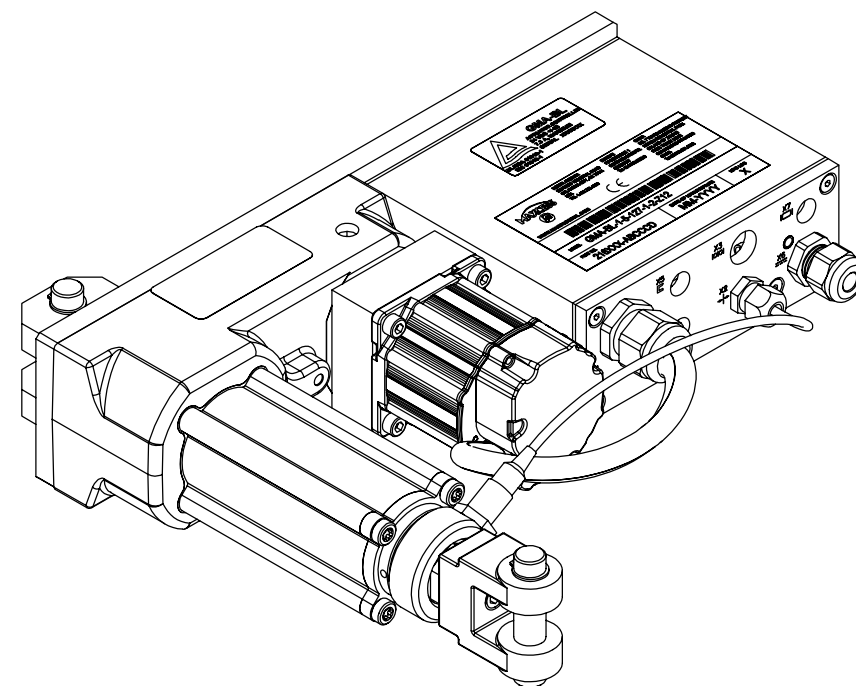
050 = 50mm
076 = 76mm
100 = 100mm
127 = 127mm
152 = 152mm
160 = 160mm
178 = 178mm
203 = 203mm
229 = 229mm
254 = 254mm
279 = 279mm
305 = 305mm

-(b)=GEAR RATIO



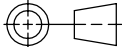
1 = 1.00
2 = 2.25
3 = 3.00
4 = 3.60
5 = 5.14
6 = 6.00
8 = 7.71

— (a)=MOTOR

```
1 = SIZE 1
2 = SIZE 2
```

[illegible]

1. SOME CABLES NOT SHOWN.

~	PRODUCTION RELEASE		TH 07/18/12	MAJ 07/18/12
SYM	REVISION		BY DATE	APVD
BY	DATE	 <p>222 WEST MEMORIAL ROAD OKLAHOMA CITY, OK 73114 TEL: 405.755.1600 FAX: 405.755.8425 WWW.MAXCESSINTL.COM</p> <p>MAGPOWER  TIDLAND</p>		
DRAWN SA	06/13/12			
CHECKED MAJ	7/17/12			
APPROVED JH	7/18/12			
 <p>THIRD ANGLE PROJECTION</p>				
<p>DIMENSIONS ARE SHOWN IN mm [INCHES] UNLESS OTHERWISE NOTED</p>		<p>TITLE</p> <p>FIFE</p> <p>ACTUATOR ASSY WITH CONTROLLER</p> <p>SIDE MOUNT, A-CLEVIS MOUNTING</p> <p>GMA-BL OUTLINE DIMENSION</p>		
SCALE	SIZE	DRAWING NO.	SHEET NO.	REV
1:2	A2	216656	1 OF 1	