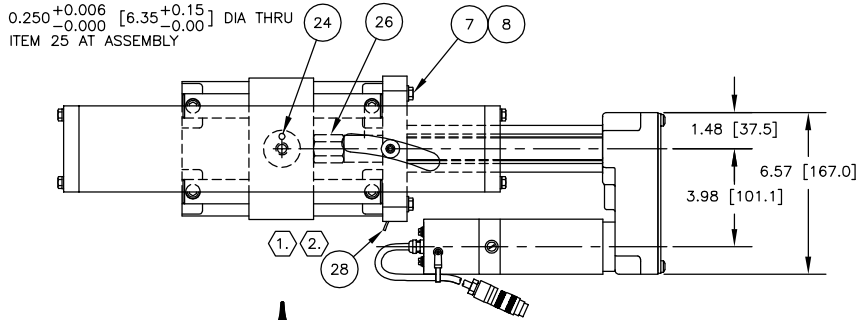


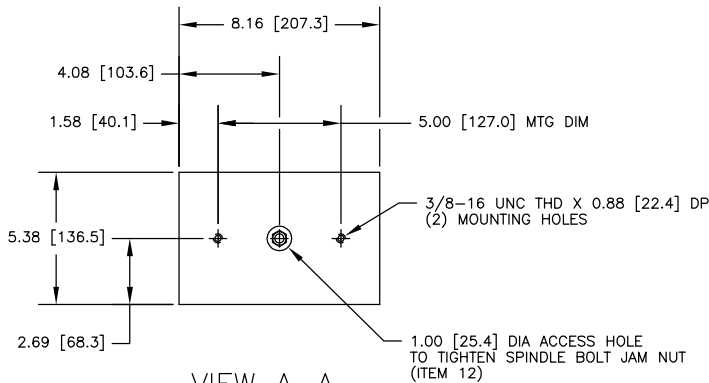
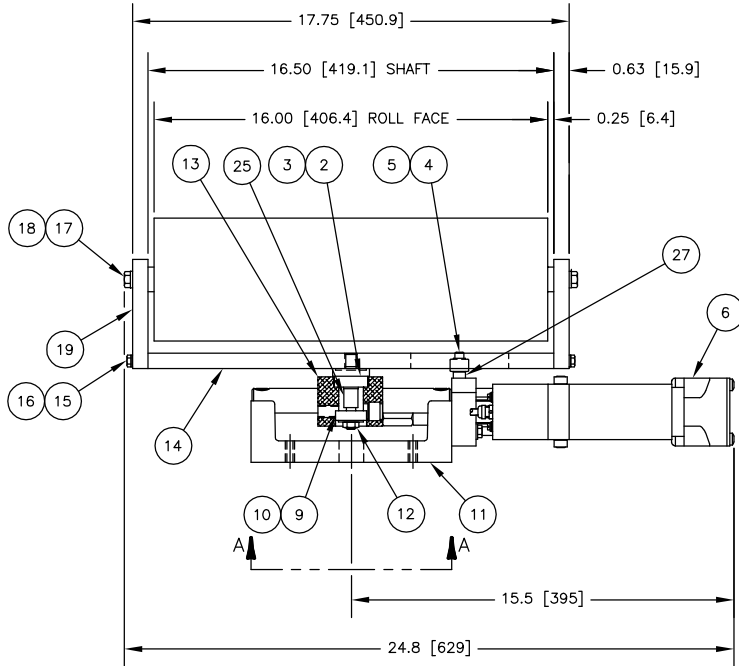
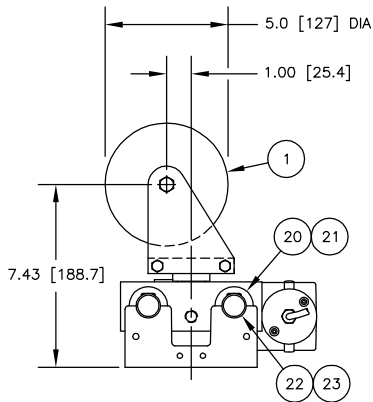
WEB TRAVEL
LEFT HAND ACTUATOR
P/N'S -003 AND -004

ROLLER AND MOUNTING HARDWARE NOT SHOWN IN THIS VIEW



WEB TRAVEL
RIGHT HAND ACTUATOR
P/N'S -001 AND -002

ROLLER AND MOUNTING HARDWARE NOT SHOWN IN THIS VIEW







VIEW A-A
MOUNTING HOLE DETAIL

| NO. REQD | | | | LIST OF MATERIAL | | |
|----------|-----|-----|-----|------------------|--|----------------|
| 213115- | | | | ITEM NO. | M K | REMARKS |
| | | | | PART NO. | DESCRIPTION | |
| 004 | 003 | 002 | 001 | | KA KANTIROLLER ASSEMBLY | |
| - | - | 1 | 1 | 1 | 04338-008 ROLLER, 5.0 [127] DIA X 16.00 [406.4] FACE | STANDARD |
| 1 | 1 | - | - | | 04338-012 ROLLER, 5.0 [127] DIA X 16.00 [406.4] FACE | RCT WRAP |
| 1 | 1 | 1 | 1 | 2 | 09983-002 BEARING CUP | TIMKEN #A-4138 |
| 1 | 1 | 1 | 1 | 3 | 09982-002 BEARING CONE | TIMKEN #A-4059 |
| 1 | 1 | 1 | 1 | 4 | 11685-007 SOCKET HEAD CAP SCREW, 1/4-20 UNC X 1-1/4 LG | |
| 1 | 1 | 1 | 1 | 5 | 08773-001 CAM FOLLOWER | |
| 1 | 1 | 1 | 1 | 6 | M335655 GMA-D1-3 ACTUATOR ASSEMBLY, 3.0 [76] STROKE | |
| 2 | 2 | 2 | 2 | 7 | 11647-007 HEX HEAD BOLT, 5/16-18 UNC X 1-1/2 LG | |
| 2 | 2 | 2 | 2 | 8 | 13450-002 FLATWASHER, 5/16 | |
| 1 | 1 | 1 | 1 | 9 | 09983-001 BEARING CUP | TIMKEN #A-2126 |
| 1 | 1 | 1 | 1 | 10 | 09982-001 BEARING CONE | TIMKEN #A-2037 |
| 1 | 1 | 1 | 1 | 11 | 09622-001 RACEWAY BASE | |
| 1 | 1 | 1 | 1 | 12 | 09173-005 SELF-LOCKING JAM NUT, 3/8-24 UNF | |
| 1 | 1 | 1 | 1 | 13 | 09571-001 CARRIER BLOCK | |
| 1 | 1 | 1 | 1 | 14 | 09584-002 PIVOT PLATE | |
| 4 | 4 | 4 | 4 | 15 | 11645-005 HEX HEAD BOLT, 1/4-20 UNC X 1 LG | |
| 4 | 4 | 4 | 4 | 16 | 11718-009 LOCKWASHER, 1/4 | |
| 2 | 2 | 2 | 2 | 17 | 11649-007 HEX HEAD BOLT, 3/8-16 UNC X 1-1/2 LG | |
| 2 | 2 | 2 | 2 | 18 | 11718-011 LOCKWASHER, 3/8 | |
| 2 | 2 | 2 | 2 | 19 | 09591-002 ROLLER BRACKET | |
| 2 | 2 | 2 | 2 | 20 | 07826-004 BALL BUSHING | |
| 4 | 4 | 4 | 4 | 21 | 07830-002 RACE ROD SEAL | |
| 2 | 2 | 2 | 2 | 22 | 01389-003 RACE ROD | |
| 4 | 4 | 4 | 4 | 23 | 11689-006 SOCKET HEAD CAP SCREW, 3/8-16 UNC X 1-1/4 LG | |
| 1 | 1 | 1 | 1 | 24 | 11948-004 ROLL PIN, 1/4 DIA X 3/4 LG | |
| 1 | 1 | 1 | 1 | 25 | 09546-001 SPINDLE BOLT | |
| 1 | 1 | 1 | 1 | 26 | 211214-002 HEX ADAPTER | |
| 1 | 1 | 1 | 1 | 27 | 79553-009 SPACER | |
| 1 | 1 | 1 | 1 | 28 | 62392-XXX ISCT-03 SERVO CENTER W/CABLE | SEE NOTE 1. |

| FIFE P/N | MODEL NO. | ROLLER FINISH | ACTUATOR LOCATION |
|------------|-----------|---------------|-------------------|
| 213115-001 | KA-R1 | STANDARD | RIGHT HAND |
| 213115-002 | KA-L1 | STANDARD | LEFT HAND |
| 213115-003 | KA-R1 | RCT WRAP | RIGHT HAND |
| 213115-004 | KA-L1 | RCT WRAP | LEFT HAND |

- NOTES:
- REFER TO SALES ORDER OR SYSTEM BLOCK DIAGRAM FOR SERVO CENTER REQUIREMENT AND CABLE LENGTH.
 - WITH CONTROLLER CONNECTED AND IN SERVO CENTER MODE, ADJUST DEPTH OF TRANSDUCER UNTIL ACTUATOR STOPS AT CENTER STROKE. IT MAY BE NECESSARY TO REVERSE POLARITY. TIGHTEN SET SCREW TO SECURE TRANSDUCER.

| SYM | | REVISION | | BY | DATE | DATE | APVD |
|---|--|--|--|--|------|---|------|
| DRAWN | | PO | | 08/23/10 | | <div><div>222 WEST MEMORIAL ROAD OKLAHOMA CITY, OK 73114 TEL: 405.755.1600 FAX: 405.755.8425 WWW.MAXCESSINTL.COM</div><div></div></div> | |
| CHECKED | | TWK | | 06/10/11 | | | |
| APPROVED | | TWK | | 06/10/11 | | | |
| DRAWING REFERENCE | | NUMBER | | | | | |
| KA KANTIROLLER (GMA-1-3) | | 213114 | | | | | |
| TOLERANCES: UNLESS OTHERWISE SPECIFIED | | THIS DRAWING IS THE PROPERTY OF FIFE CORPORATION. IT IS LOANED WITH THE UNDERSTANDING THAT IT MAY NOT BE REPRODUCED NOR MAY THE INFORMATION CONTAINED HEREIN BE USED FOR THE MAKING OF DRAWINGS OR FOR MANUFACTURING PURPOSES WITHOUT THE WRITTEN CONSENT OF FIFE CORPORATION. | | THIRD ANGLE PROJECTION | | TITLE FIFE KA KANTIROLLER ASSEMBLY WITH (1) 5.0 [127] DIA ROLLER AND GMA-D1-3 ELECTROMECHANICAL ACTUATOR | |
| INCHES .X = ±.1 .XX = ±.03 .XXX = ±.010 | | MILLIMETERS X = ±.25 X = ±.8 XX = ±.2 | | DIMENSIONS ARE SHOWN IN INCHES (mm) UNLESS OTHERWISE NOTED | | | |
| FRACTIONS = STOCK SIZE | | SURFACE FINISH EXPOSED 250 AA MACHINED 125 AA DE-BURR ALL EDGES 0.020 (0.5) MAX | | STANDARD SHOP PRACTICES AND STANDARD SHOP RUN TOLERANCES PER DRAWING 40400 | | | |
| SCALE 1/4 | | SIZE D | | DRAWING NO. 213115 | | | |
| LOCATION OK | | SHEET NO. 1 OF 1 | | REV | | | |