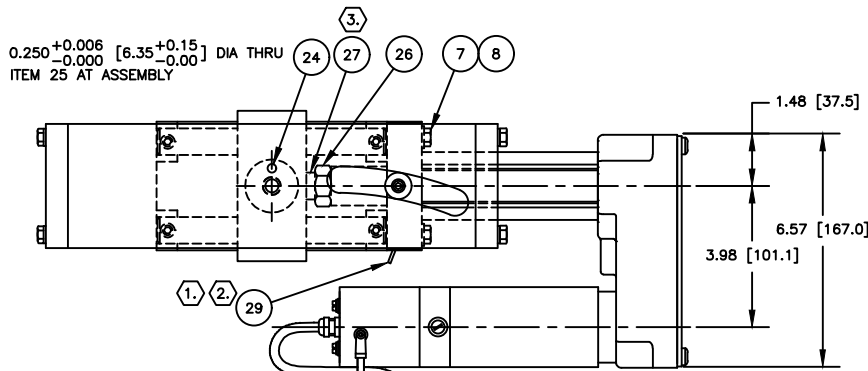
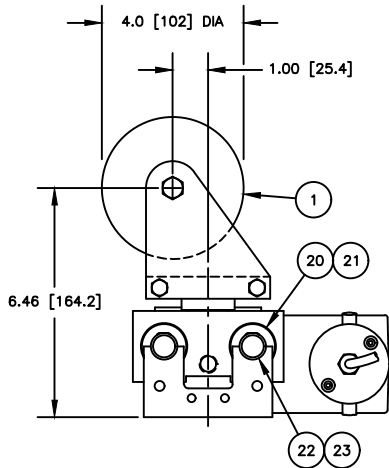


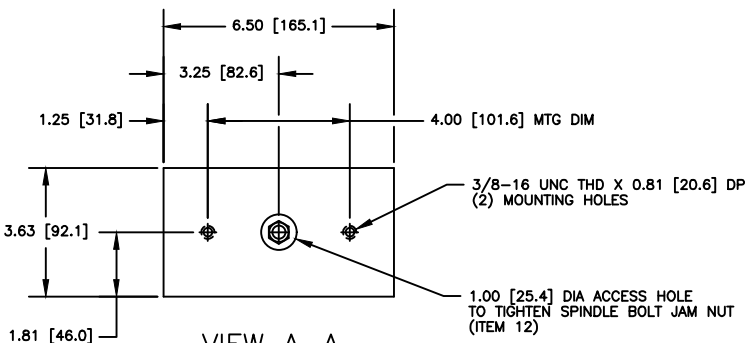
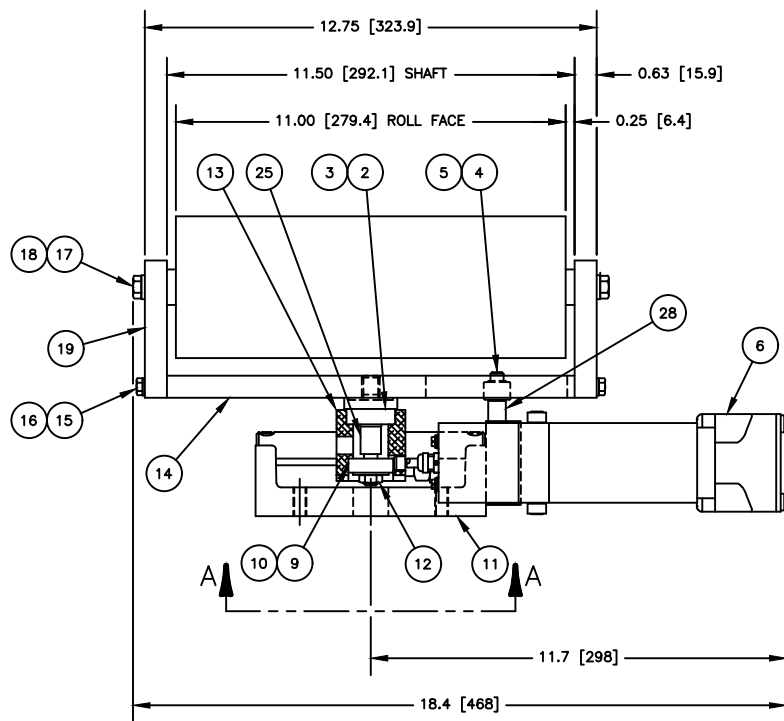
WEB TRAVEL
LEFT HAND ACTUATOR
P/N'S -003, & -004

ROLLER AND MOUNTING HARDWARE NOT SHOWN IN THIS VIEW



WEB TRAVEL
RIGHT HAND ACTUATOR
P/N'S -001, & -002

ROLLER AND MOUNTING HARDWARE NOT SHOWN IN THIS VIEW



VIEW A-A
MOUNTING HOLE DETAIL

NO. REQD					LIST OF MATERIAL		
29L213111--					ITEM NO.	M	K
004 003 002 001					PART NO.		
					DESCRIPTION		
					REMARKS		
1					KLB KANTIROLLER ASSEMBLY		
1					29L04338010 ROLLER, 4.0 [102] DIA X 11.00 [279.4] FACE		
1					29L04338014 ROLLER, 4.0 [102] DIA X 11.00 [279.4] FACE		
1					29L09983002 BEARING CUP		
1					29L09982002 BEARING CONE		
1					29L11685008 SOCKET HEAD CAP SCREW, 1/4-20 UNC X 1-1/2 LG		
1					29L08773001 CAM FOLLOWER		
1					52M335648 GMA-D1-3 ACTUATOR ASSEMBLY, 3.0 [76] STROKE		
2					29L11645007 HEX HEAD BOLT, 1/4-20 UNC X 1-1/2 LG		
2					29L13450001 FLATWASHER, 1/4		
1					29L09983001 BEARING CUP		
1					29L09982001 BEARING CONE		
1					29L05018001 RACEWAY BASE		
1					29L09173005 SELF-LOCKING JAM NUT, 3/8-24 UNF		
1					29L09547001 CARRIER BLOCK		
1					29L09582002 PIVOT PLATE		
4					29L11645005 HEX HEAD BOLT, 1/4-20 UNC X 1 LG		
4					29L11718009 LOCKWASHER, 1/4		
2					29L11649007 HEX HEAD BOLT, 3/8-16 UNC X 1-1/2 LG		
2					29L11718011 LOCKWASHER, 3/8		
2					29L09598002 ROLLER BRACKET		
2					29L07826002 BALL BUSHING		
4					29L07830001 RACE ROD SEAL		
2					29L01389001 RACE ROD		
4					29L11685006 SOCKET HEAD CAP SCREW, 1/4-20 UNC X 1 LG		
1					29L11948004 ROLL PIN, 1/4 DIA X 3/4 LG		
1					29L09546001 SPINDLE BOLT		
1					29L211214001 HEX ADAPTER		
1					29L27943002 CYLINDER ROD SPACER		
1					29L79553008 SPACER		
1					29L69392016 ISCT-03 SERVO CENTER W/CABLE, 5M LG		

FIFE P/N	MODEL NO.	ROLLER FINISH	ACTUATOR LOCATION
29L213111001	KLB-R1	STANDARD	RIGHT HAND
29L213111002	KLB-L1	STANDARD	LEFT HAND
29L213111003	KLB-R1	RCT WRAP	RIGHT HAND
29L213111004	KLB-L1	RCT WRAP	LEFT HAND

NOTES:

- REFER TO SALES ORDER OR SYSTEM BLOCK DIAGRAM FOR SERVO CENTER REQUIREMENT AND CABLE LENGTH.
- WITH CONTROLLER CONNECTED AND IN SERVO CENTER MODE, ADJUST DEPTH OF TRANSDUCER UNTIL ACTUATOR STOPS AT CENTER STROKE. IT MAY BE NECESSARY TO REVERSE POLARITY. TIGHTEN SET SCREW TO SECURE TRANSDUCER.
- TO INSTALL ROD SPACER (ITEM 27), USE HIGH STRENGTH LOCTITE ON THREADS AT ASSEMBLY. USE #271 OR #277 WITH PRIMER 'T'.

KLB KANTIROLLER (GMA-1-3)		213110	DRAWING REFERENCE		NUMBER	06/10/11
TOLERANCES:		UNLESS OTHERWISE SPECIFIED:		INCHES		MM
X = ±.1		X = ±.1		X = ±.1		X = ±.1
XX = ±.05		XX = ±.05		XX = ±.05		XX = ±.05
XXX = ±.010		XXX = ±.010		XXX = ±.010		XXX = ±.010
FRACTIONS = STOCK SIZE		FRACTIONS = STOCK SIZE		FRACTIONS = STOCK SIZE		FRACTIONS = STOCK SIZE
SURFACE FINISH		EXPOSED		MACHINED		250 AA
DE-BURR ALL EDGES		0.020 [0.5] MAX		MACHINED		125 AA
STANDARD SHOP PRACTICES		AND STANDARD SHOP		RUN TOLERANCES		PER DRAWING 40400
OK		OK		OK		OK
SCALE		3/8		SIZE		D
DRAWING NO.		213111		SHEET NO.		1 OF 1
REV		A		REV		A