

MODEL LRB-OPG
RACEWAY BASE ASSEMBLY

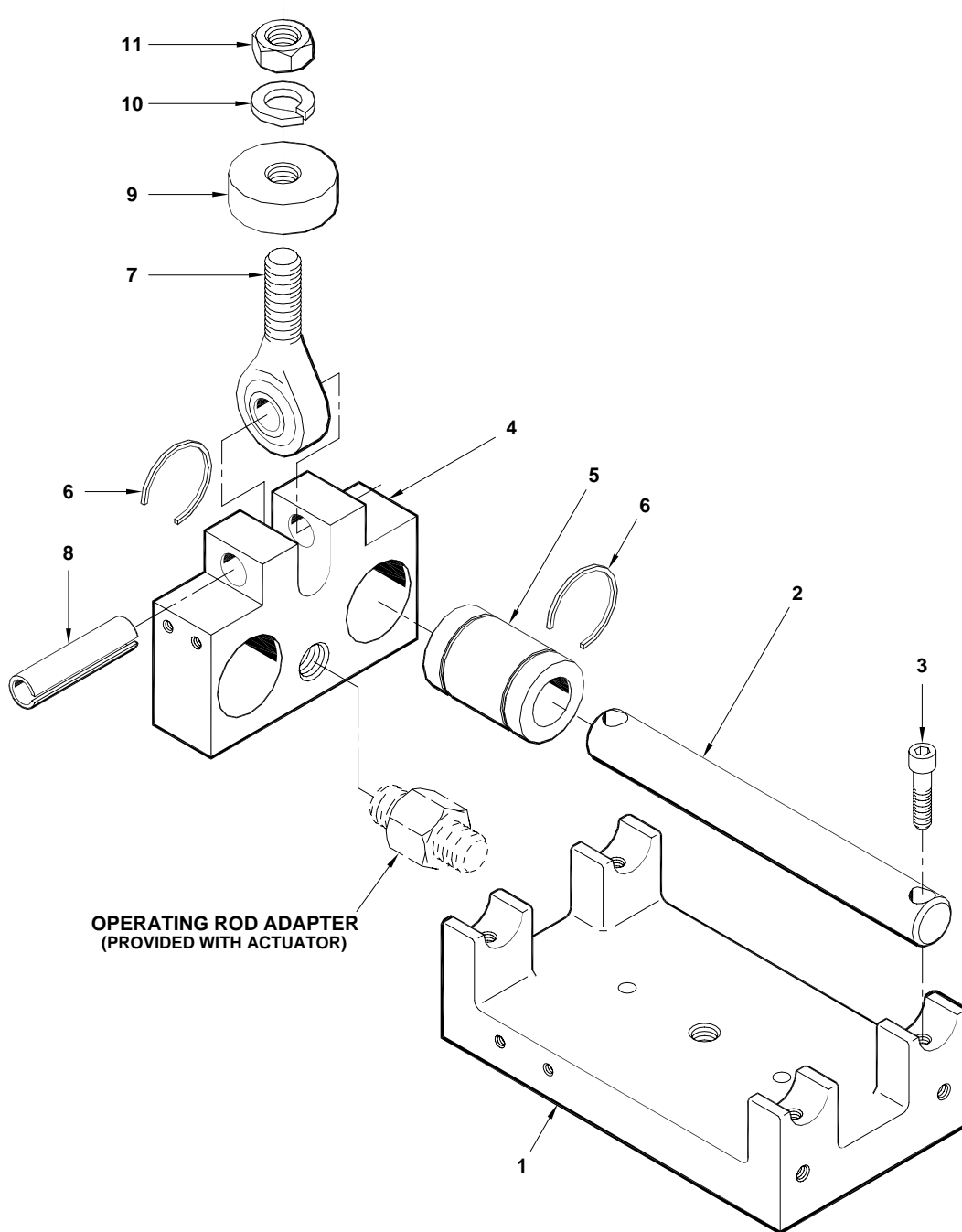


Figure 1.
MODEL LRB-OPG RACEWAY BASE ASSEMBLY



**RACEWAY BASE ASSEMBLY
MODEL LRB-OPG ACTUATOR END**

MAINTENANCE INSTRUCTIONS

Parts List

ITEM NUMBER	DESCRIPTION	PART NUMBER	QUANTITY	USED ON*
--	RACEWAY BASE ASSEMBLY, MODEL LRB-OPG, ACTUATOR END, 3-INCH MAXIMUM STROKE WITH SUPER BALL BUSHINGS	44355-001	--	A
--	RACEWAY BASE ASSEMBLY, MODEL LRB-OPG, ACTUATOR END, 5-INCH MAXIMUM STROKE WITH SUPER BALL BUSHINGS	44355-002	--	B
--	RACEWAY BASE ASSEMBLY, MODEL LRB-OPG, ACTUATOR END, 3-INCH MAXIMUM STROKE WITH TEFLON BUSHING	44355-003	--	C
--	RACEWAY BASE ASSEMBLY, MODEL LRB-OPG, ACTUATOR END, 5-INCH MAXIMUM STROKE WITH TEFLON BUSHINGS	44355-004	--	D
1	• RACEWAY BASE	44442-001	1	A, C
	• RACEWAY BASE	44590-001	1	B, D
2	• RACEROD, 3/4 DIAMETER X 6-7/16 LG	01389-001	2	A
	• RACEROD, 3/4 DIAMETER X 8-11/16 LG	01389-052	2	B
	• RACEROD, 3/4 DIAMETER X 6-7/16 LG (SST)	01389-010	2	C
	• RACEROD, 3/4 DIAMETER X 8-11/16 LG (SST)	01389-053	2	D
3	• HEX SOCKET HEAD CAP SCREW, 1/4-20 UNC X 1 LG	11685-006	4	
4	• CARRIER BLOCK	44356-001	1	
5	• SUPER BALL BUSHING WITH INTERNAL SEALS	90022-003	2	A, B
	• TEFLON BUSHING WITH SST CASE	48100-003	2	C, D
6	• RETAINING RING	54324-005	4	A, B
	• RETAINING RING, SST	54324-013	4	C, D
7	• SPHERICAL ROD END BEARING	90155-006	1	
8	• ROLL PIN, 1/2 DIAMETER X 2 LG	11951-010	1	
9	• ADJUSTING NUT	44443-001	1	
10	• LOCKWASHER, 1/2	11718-013	1	
11	• JAM NUT, 1/2-20 UNF	08756-015	1	

*Code letters show variations in parts on two or more similar assemblies. Parts unique to a particular assembly are identified by the same code letter as the main assembly. Common parts are uncoded.

Items are indented in the bill of material to indicate their relationship to a higher assembly. All items belonging to an assembly will be listed directly under that assembly and will be indented one column to the right.



MAXCESS INTERNATIONAL COMPANIES



GUIDING · INSPECTION



TENSION CONTROL



SLITTING · WINDING

FIFE CORPORATION

222 W. Memorial Road, Oklahoma City, OK 73114-2317, USA / Post Office Box 26508, Oklahoma City, OK 73126-0508, USA
Phone: 405.755.1600 / 800.639.3433 / Fax: 405.755.8425 / E-mail: fife@fife.com / Web: www.fife.com