

RACEWAY BASE CARRIER BLOCK ALIGNMENT
LRB AND LRC OFFSET PIVOT GUIDES

If the moving guide structure has been removed from the fixed guide structure or for any reason the carrier blocks have been loosened, carrier block alignment is necessary. To adjust carrier blocks, proceed as follows:

1. Place guide in centered position.
2. Loosen bolts that attach the pivot carrier to the carrier blocks. (On model LRB, also loosen jam nut that attaches the spherical rod end to the pivot carrier.)

3. Rotate each carrier block until it is perpendicular to the race rod (see *Illustration A*) and tighten the attaching bolt.

On Model LRB, rotate the spherical rod end until the flat surfaces on it are perpendicular to the clevis-like carrier block (see *Illustration B*) and tighten the attaching jam nut.

4. Jog the guide to its maximum pivot in both directions and ensure that the carrier blocks (and spherical rod end on model LRB) do not bind.

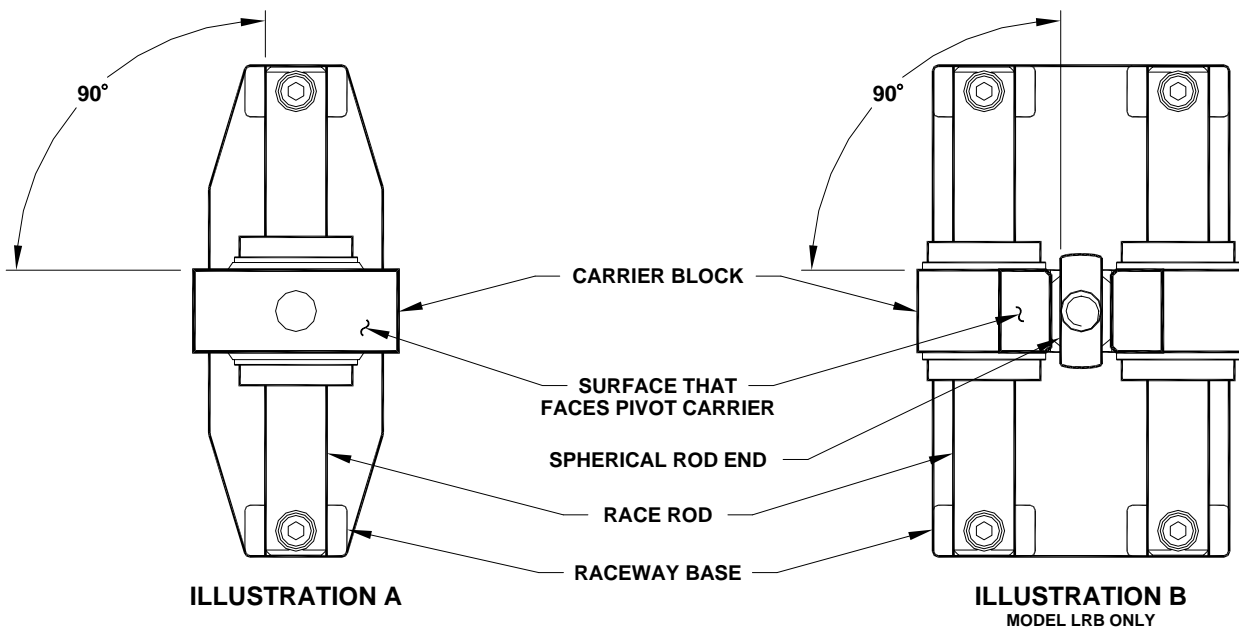


Figure 1.
RACEWAY BASE CARRIER BLOCK ALIGNMENT



MAXCESS INTERNATIONAL COMPANIES



GUIDING · INSPECTION



TENSION CONTROL



SLITTING · WINDING

FIFE CORPORATION

222 W. Memorial Road, Oklahoma City, OK 73114-2317, USA / Post Office Box 26508, Oklahoma City, OK 73126-0508, USA
Phone: 405.755.1600 / 800.639.3433 / Fax: 405.755.8425 / E-mail: fife@fife.com / Web: www.fife.com