

FIFE P/N	'A' REFLECTOR LENGTH	'B' MOUNTING DIMENSION	'C' OVERALL LENGTH	MAXIMUM SENSOR TRAVEL
78436-002	37.20 [944.9]	38.88 [987.6]	39.88 [1013.0]	33.27 [845.1]
78436-003	53.35 [1355.1]	55.00 [1397.0]	56.00 [1422.4]	49.41 [1255.0]
78436-004	21.10 [535.9]	22.76 [578.1]	23.76 [603.5]	17.17 [436.1]
78436-005	65.43 [1661.9]	67.09 [1704.1]	68.09 [1729.5]	61.50 [1562.1]

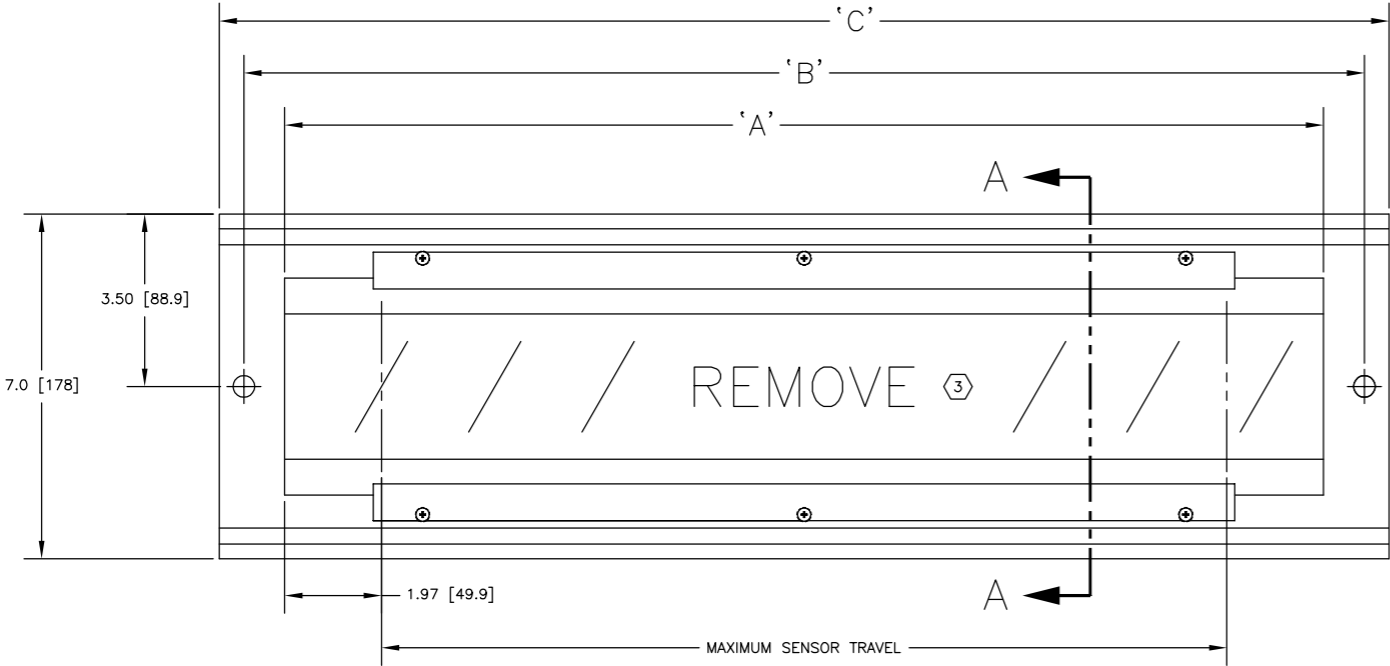
NOTES:

1. PART NO. 78436-001 IS OBSOLETE, REFLECTOR IS NO LONGER AVAILABLE.
2. DIMENSIONS IN BRACKET [mm]

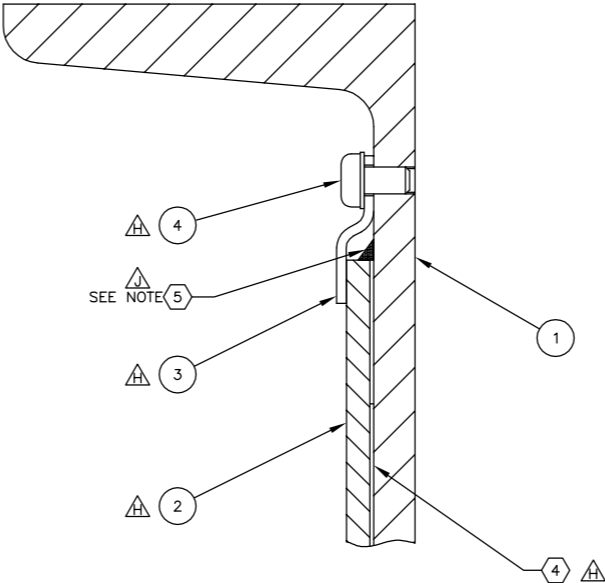
3 USING A PERMANENT MARKER, WRITE "REMOVE" ON BLUE FILM.
ADD SEVERAL DIAGONAL LINES.

4 REMOVE ADHESIVE PROTECTIVE FILM AND APPLY ADHESIVE SIDE DOWN
TO CHANNEL.

5 ADD A LIQUID TIGHT SEAM OF LOCTITE 5810A ALL AROUND THE REFLECTOR (ITEM 2)
BEFORE CLAMPING IN PLACE WITH WINDOW CLAMPS (ITEM 3).

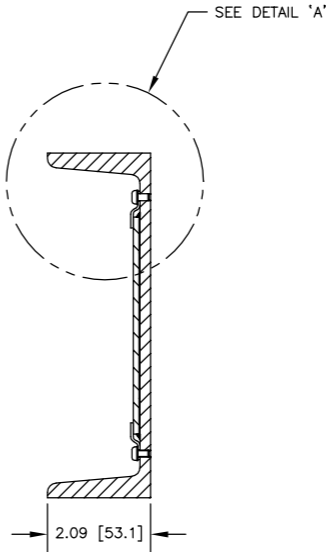


(P/N 78436-004 AS SHOWN)



DETAIL 'A'

SCALE: 4X



SECTION A-A

NO. REQD				LIST OF MATERIAL				
78436-				ITEM NO.	M K	PART NO.	DESCRIPTION	MATERIAL
005	004	003	002	1			REFLECTOR ASSEMBLY	
		1	1			212057-002	REFLECTOR MOUNTING BRACKET	
						212057-003	REFLECTOR MOUNTING BRACKET	
	1					212057-001	REFLECTOR MOUNTING BRACKET	
1						212057-004	REFLECTOR MOUNTING BRACKET	
			1	2		92880-006	REFLECTOR	
		1				92880-007	REFLECTOR	
	1					92880-005	REFLECTOR	
						92880-008	REFLECTOR	
			2	3		24935-003	WINDOW CLAMP	
		2				24935-005	WINDOW CLAMP	
	2					24935-001	WINDOW CLAMP	
						24935-007	WINDOW CLAMP	
2								
16	6	14	10	4		29A195-1	PHILLIPS PAN HD MACH SCREW, #6-32 UNC X 1/4 LG	

J	ADDED NOTE 5. ECR #80833	BP 07/16/14	JMP 07/17/14
H	ITEM 2: P/N 78436-002 WAS 92880-002 P/N 78436-003 WAS 92880-003 P/N 78436-004 WAS 92880-001 P/N 78436-005 WAS 92880-004 ITEM 3 WAS 42742-002 ITEM 4 WAS 13450-001 DELETED ITEM 5 AND NOTE 5 REPLACED NOTE 4 ECR #77820	JGR 02/14/12	BC 02/15/12
G	ADDED NOTE 5. ECR #76046	LZ 11/29/11	JMP 01/16/12
F	ITEM 2 WAS TIDLAND GMBH P/N ITEM 4 WAS 42742-001 ADDED ITEM 5, NOTES 3 AND 4 REDRAWN IN D-SIZE ENLARGED SECTION A-A VIEW ECR #73380	LZ 03/02/10	JMP 03/05/10
E	ADDED P/N 78436-004 AND -005 ITEM 1 P/N WAS 78435-XXX ITEM 2 P/N WAS 78434-XXX ITEM 3 P/N WAS 20334-008 ITEM 4 P/N WAS 27547-006 DELETED ITEM 5 ECR #73284	DOW 02/01/10	JMP 02/01/10
D	PART NO. -001 OBSOLETE PER REV 'D' ECR #71499	RDF 06/17/08	RP 06/17/08
C	DIM 'B' FOR P/N -003 WAS 55.50 ECR #56078	12/08/98	CR 12/8/98
B	REDRAWN ON CAD ECR #47593	06/26/97	CR 07/03/97

SYM		REVISION		BY	DATE	APVD
BY		DATE				
DRAWN		MW		7/3/97		
CHECKED		CR		7/3/97		
APPROVED		HDC		7/3/97		
DRAWING REFERENCE		NUMBER				
TOLERANCES: UNLESS OTHERWISE SPECIFIED: INCHES .X = ±.1 .XX = ±.03 .XXX = ±.010 FRACTIONS = STOCK SIZE SURFACE FINISH EXPOSED 250 AA DE-BURR ALL EDGES 0.020 (0.5) MAX		This drawing is the property of FIFE CORPORATION. It is loaned with the understanding that it may not be reproduced nor may the information contained herein be used for the making of drawings or for manufacturing purposes without the written consent of FIFE CORPORATION. GEOMETRICAL SYMBOLS PER ANSI Y14.5M INCHES (mm) UNLESS OTHERWISE NOTED		STANDARD SHOP PRACTICES AND STANDARD SHOP RUN TOLERANCES PER DRAWING 40400		OK
SCALE		SIZE		1/2		D
DRAWING NO.		SHEET NO.		REV		
78436		1 OF 1		J		

MAXCESS 222 WEST MEMORIAL ROAD
OKLAHOMA CITY, OK 73114
TEL: 405.755.1600
FAX: 405.755.8425
WWW.MAXCESSINTL.COM

TITLE
FIFE
REFLECTOR ASSEMBLY
SE-20 SENSOR