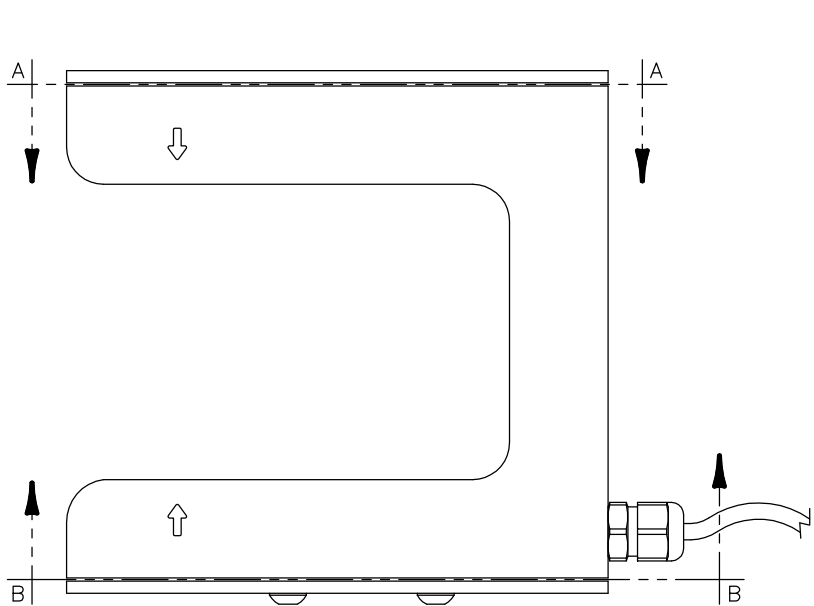
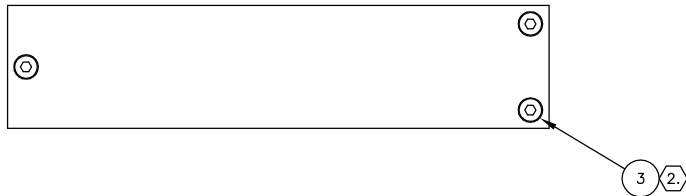


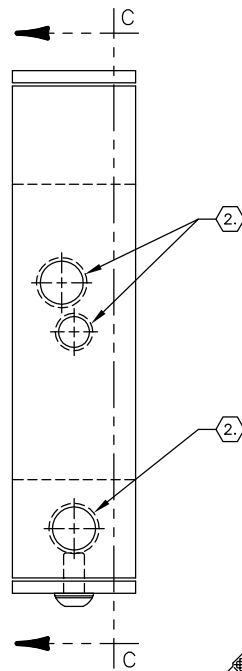
SCHEMATIC

NOTES—

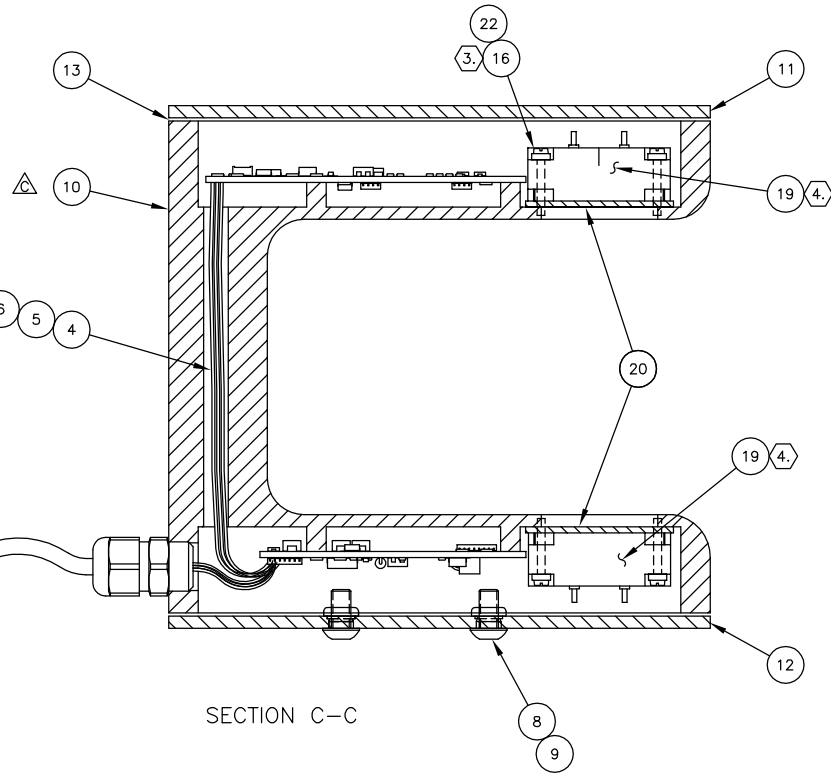
1. THE NOTED WIRES MUST BE LONG ENOUGH TO PROVIDE A SERVICE LOOP.
2. TO ENSURE PROPER GROUNDING;  
A. BEFORE INSTALLING THE CABLE ASSY (ITEM 18) BE SURE THE COATING IS REMOVED FROM THE THREADED HOLE IN THE SENSOR HOUSING.  
B. BEFORE INSTALLING THE SCREWS (ITEM 3) BE SURE THE COATING IS REMOVED FROM THE TAPERED SURFACE OF ONE MOUNTING HOLE IN THE COVER AND THE MATING TAPPED HOLE IN THE SENSOR BODY.  
C. BE SURE THE COATING IS REMOVED FROM BOTH OF THE TAPPED FAMB MOUNTING HOLES IN THE SENSOR HOUSING (ITEM 10).
3. APPLY LOCTITE #222 TO THE THREADS OF THE NOTED SCREWS AT INSTALLATION.
4. TRIM THE LEADS ON THE TRANSDUCER (ITEM 19) TO 0.125 LG MAX.



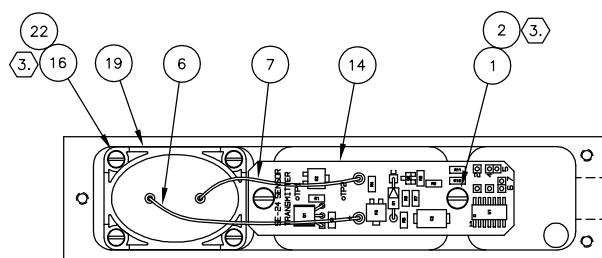
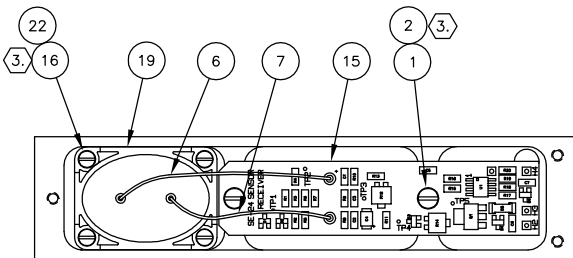
SECTION A—A  
RECIEVER ASSY



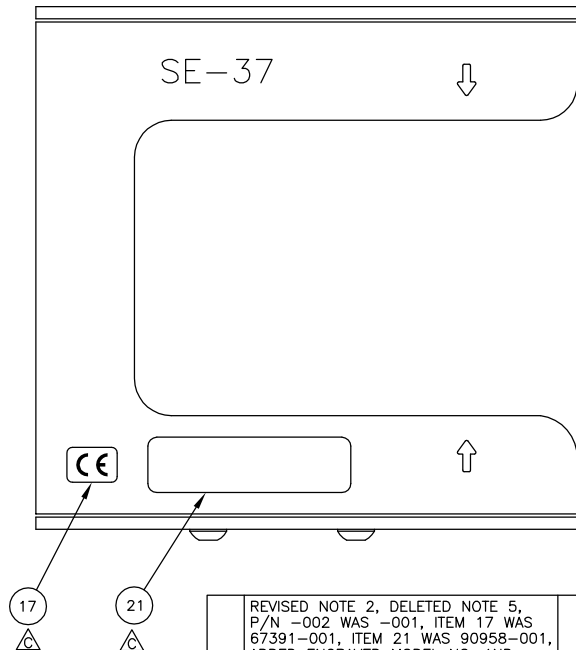
SECTION B—B  
TRANSMITTER ASSY



SECTION C—C



| NO. REQD |     | LIST OF MATERIAL |  |          |         |
|----------|-----|------------------|--|----------|---------|
| ITEM NO. | M K | PART NO.         | DESCRIPTION                                    | MATERIAL | REMARKS |
|          |     |                  |  |          |         |
| 67386—   | 001 |                  | SENSOR ASSEMBLY                                |          |         |
| 4        | 1   | 13655—008        | FLAT FIBER WASHER, #4                          |          |         |
| 4        | 2   | 90911—004        | CHEESE HEAD MACHINE SCREW, M3 X 6mm LG         |          |         |
| 6        | 3   | 91059—001        | FLAT HD MACH SCR, M3 X 8mm LG, PHILLIPS RECESS | SST      |         |
| 1        | 4   | 22409—007        | WIRE, #24 AWG X LENGTH AS REQUIRED             | YELLOW   |         |
| 1        | 5   | 22409—011        | WIRE, #24 AWG X LENGTH AS REQUIRED             | VIOLET   |         |
| 3        | 6   | 22409—013        | WIRE, #24 AWG X LENGTH AS REQUIRED             | WHITE    |         |
| 2        | 7   | 22409—001        | WIRE, #24 AWG X LENGTH AS REQUIRED             | BLACK    |         |
| 2        | 8   | 27547—005        | EXTERNAL TOOTH LOCKWASHER, 5mm                 |          |         |
| 2        | 9   | 28119—001        | BUTTON SOC HD MACH SCR, M5 X 10mm LG           |          |         |
| 1        | 10  | 213324—001       | SENSOR BODY                                    |          |         |
| 1        | 11  | 67389—001        | COVER PLATE                                    |          |         |
| 1        | 12  | 67389—002        | COVER PLATE ASSEMBLY                           |          |         |
| 2        | 13  | 67390—001        | GASKET, COVER PLATE                            |          |         |
| 1        | 14  | 84184—101        | PCB ASSEMBLY, TRANSMITTER                      |          |         |
| 1        | 15  | 84188—101        | PCB ASSEMBLY, RECEIVER                         |          |         |
| 8        | 16  | 91939—008        | CHEESE HD MACH SCR, SLOTTED, M2 X 16mm LG      | SST      |         |
| 1        | 17  | 573185—001       | LABEL, CE                                      |          |         |
| 1        | 18  | 64153—001        | CABLE ASSEMBLY X 6.0 LG                        |          |         |
| 2        | 19  | 92053—001        | ULTRASONIC TRANSDUCER, 45 KHz                  |          |         |
| 2        | 20  | 67393—002        | TRANSDUCER GASKET                              |          |         |
| 1        | 21  | 212435—001       | LABEL, BAR CODE                                |          |         |
| 8        | 22  | 13655—010        | FLAT FIBER WASHER, #2                          |          |         |



|  |  |           |          |
|--|--|-----------|----------|
| REVISED NOTE 2, DELETED NOTE 5, P/N -002 WAS -001, ITEM 17 WAS 67391-001, ITEM 21 WAS 90958-001, ADDED ENGRAVED MODEL NO. AND ARROWS TO SIDE VIEWS |  | LZ        | JMP      |
| C  |  | 06/15/10  | 08/19/11 |
| ITEM 20 WAS P/N 67393-001 ADDED ITEM 22  |  | OLSON     | JB       |
| B  |  | 09/12/01  | 09/13/01 |
| ITEM 2 WAS P/N 90911-002 ITEM 8 WAS P/N 73784-008 ADDED ITEM 21 AND NOTE 5   |  | OLSON     | GS       |
| A  |  | 07/26/01  | 07/26/01 |
| SYM  |  | REVISION  |          |
| BY   |  | DATE      |          |
| DRAWN  |  | 04/01/01  |          |
| LEP  |  |           |          |
| CHECKED  |  | 04/13/01  |          |
| GS   |  |           |          |
| APPROVED   |  | 04/13/01  |          |
| HAQUE  |  |           |          |
| THIRD ANGLE PROJECTION   |  |           |          |
| DIMENSIONS ARE SHOWN IN INCHES (mm) UNLESS OTHERWISE NOTED   |  |           |          |
| TOLERANCES: UNLESS OTHERWISE SPECIFIED   |  |           |          |
| INCHES   |  | MM        |          |
| .X = ±.1   |  | X = ±2.5  |          |
| .XX = ±.03   |  | X = ±.8   |          |
| .XXX = ±.010   |  | XX = ±.2  |          |
| FRACTIONS = STOCK SIZE   |  |           |          |
| SURFACE FINISH   |  |           |          |
| EXPOSED  |  | MACHINED  |          |
| 250 AA   |  | 125 AA    |          |
| DE-BURR ALL EDGES  |  |           |          |
| 0.020 (0.5) MAX  |  |           |          |
| STANDARD SHOP PRACTICES AND STANDARD SHOP RUN TOLERANCES PER DRAWING 40400   |  |           |          |
| LOCATION   |  |           |          |
| OK   |  |           |          |
| SCALE  |  | SIZE      |          |
| FULL   |  | D         |          |
| DRAWING NO.  |  | SHEET NO. |          |
| 67386  |  | 1 OF 1    |          |
|  |  | REV       |          |
|  |  | C         |          |

