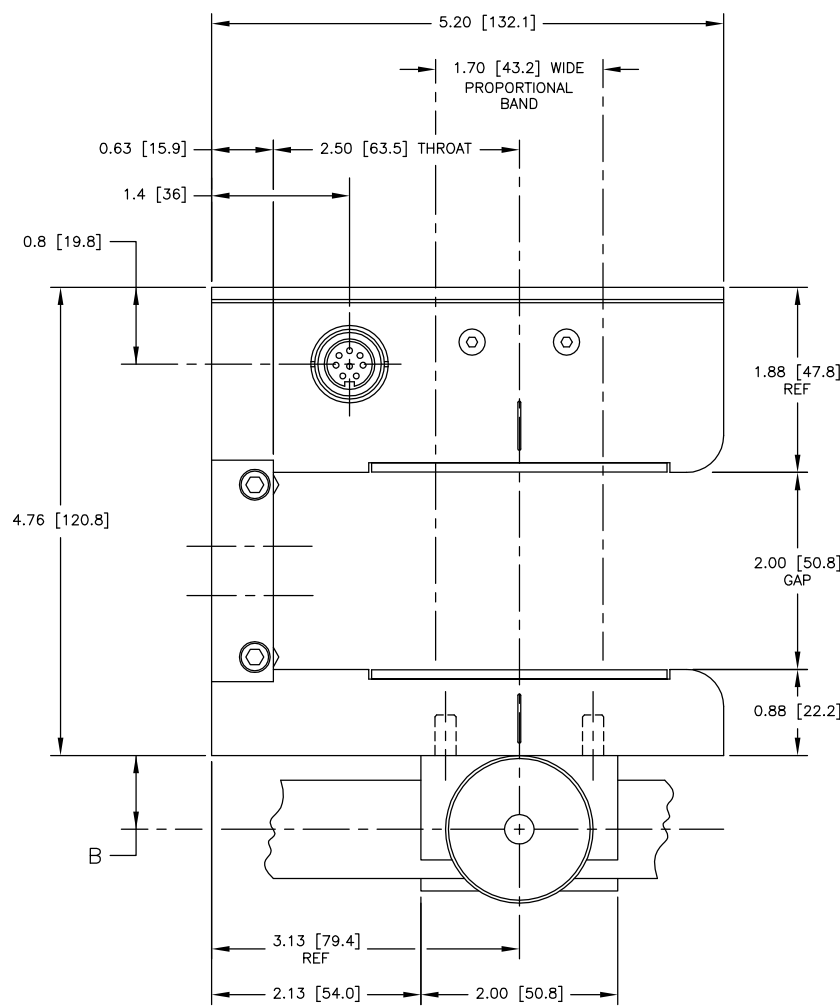
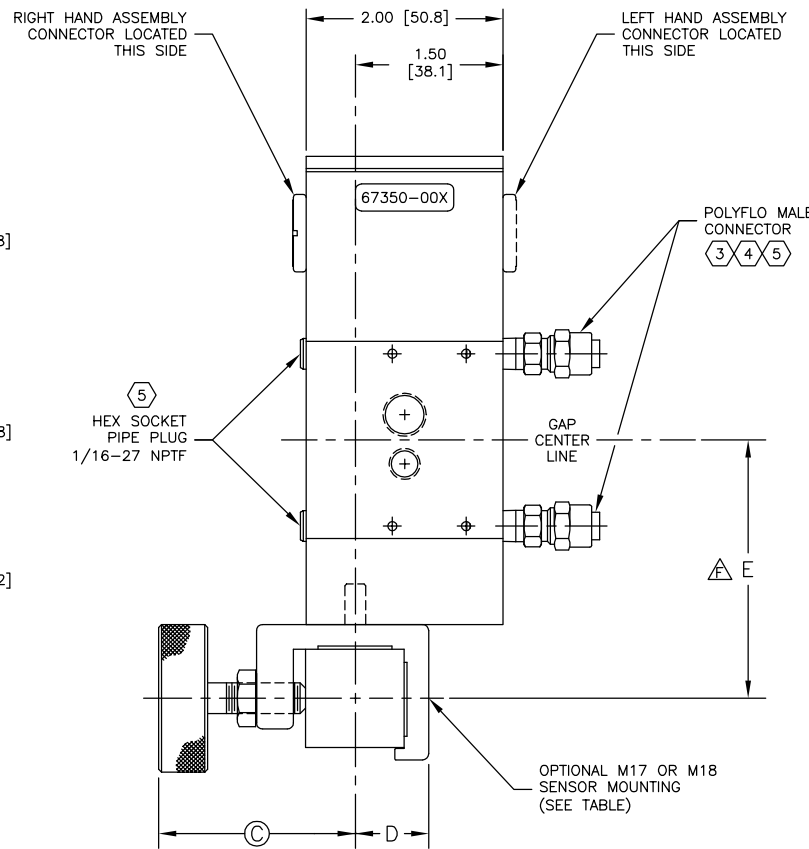


SE-38 SENSOR ASSEMBLY SHOWN
WITHOUT OPTIONAL MOUNTING BRACKET

SEE NOTE 2 6



SE-38 SENSOR ASSEMBLY SHOWN
WITH OPTIONAL M-18 MOUNTING BRACKET



NOTES:

- ALL DIMENSIONS ARE IN INCHES [mm].
- OPERATING TEMPERATURE RANGE:
0 TO +60°C [+32 TO +140°F].
- TO ENABLE AIR SWEEP, CONNECT 1/4" O.D. POLYFLO TUBING.
- REGULATED AIR SUPPLY, FREE OF OIL AND WATER TO BE SUPPLIED BY CUSTOMER. PRESSURE RANGE 5-60 PSI [34-414 KPa]. ESTIMATED CONSUMPTION 8 TO 34 CFM [227 TO 963 LPM] AT 80°F [27°C] WITH BOTH PORTS USED.
- SENSOR TO BE PROVIDED AS SHOWN. CUSTOMER TO ALTERNATE FITTINGS AND PLUGS TO THE RIGHT OR LEFT SIDE OF THE SENSOR AS NEEDED.
- SENSOR WEIGHT WIHOUT MOUNTING BRACKET 30.2 OZ [856 g]

| SENSOR MOUNTING | A SQ. BAR | B | C | D | E |
|-----------------|--------------|-------------|------------|-------------|-------------|
| M17 | 3/4 [19.1] | 0.63 [15.9] | 1.5 [38.1] | 0.63 [15.9] | 2.50 [63.5] |
| M18 | 1 [25.4] | 0.75 [19.1] | 2.0 [50.8] | 0.75 [18.9] | 2.63 [66.8] |

| SE-38 SENSOR ASSEMBLY | | 67350 |
|--|---|--------------------------|
| DRAWING REFERENCE | | NUMBER |
| DE-BURR ALL EDGES 0.020 [0.5] MAX | STANDARD SHOP PRACTICES AND STANDARD SHOP TOLERANCES PER DRAWING 40400 | |
| UNLESS OTHERWISE SPECIFIED: This drawing is the property of FIFE CORPORATION. It is loaned with the understanding that it may not be reproduced nor may the information contained herein be used for the making of drawings or for manufacturing purposes without the written consent of FIFE CORPORATION. | | |
| GENERAL TOLERANCES: ANSI Y14.5M | GEOMETRICAL SYMBOLS: ANSI Y14.5M | SURFACES: ANSI Y14.5M |

| | | | |
|--|---|--------------------------------------|-------------------|
| F | UPDATED VIEWS TO SHOW REVISED LOCATION FOR AIR FITTINGS AND PLUGS ADDED DUAL CONVERSION TO NOTE 4 ADDED NOTE 6 ADDED DIM E TO TABLE ADDED DIM E TO SENSOR ECR #79021 | JGR 03/26/13 | JMP 04/11/13 |
| E | REVISED NOTE 4. CHANGED SENSOR REQUIREMENTS FOR AIR SWEEP. ECR #70168 | DW 05/09/07 | RDF 05/09/07 |
| D | REVISED NOTE 3. ADDED AIR SWEEP FITTINGS ECR #67797 | RDF 10/25/06 | RP 10/25/06 |
| C | REVISED NOTE 4. ECR #67926 | PO 08/18/06 | RDF 08/18/06 |
| B | ADDED HOLES FOR AIR SWEEP ADDED NOTES 3 AND 4 ECR #60961 | JMM 10/17/01 | RDF 10/17/01 |
| A | PICTORIALLY CHANGED SENSOR LABEL RELOCATED SENSOR P/N LABEL ECR #60024 | OLSON 05/25/01 | DH 05/25/01 |
| ~ | PRODUCTION RELEASE | OLSON 04/12/01 | HAQUE 04/12/01 |
| SYM | | REVISION | BY DATE |
| BY | | DATE | APVD |
| DRAWN | OLSON | 04/06/01 | |
| CHECKED | DH | 04/09/01 | |
| APPROVED | HAQUE | 04/12/01 | |
| THIRD ANGLE PROJECTION | | TITLE | |
| DIMENSIONS ARE SHOWN IN INCHES (mm) UNLESS OTHERWISE NOTED | | FIFE INSTALLATION SE-38 SENSOR | |
| SCALE | SIZE | DRAWING NO. | SHEET NO. REV |
| FULL | D | 67351 | 1 OF 1 F |