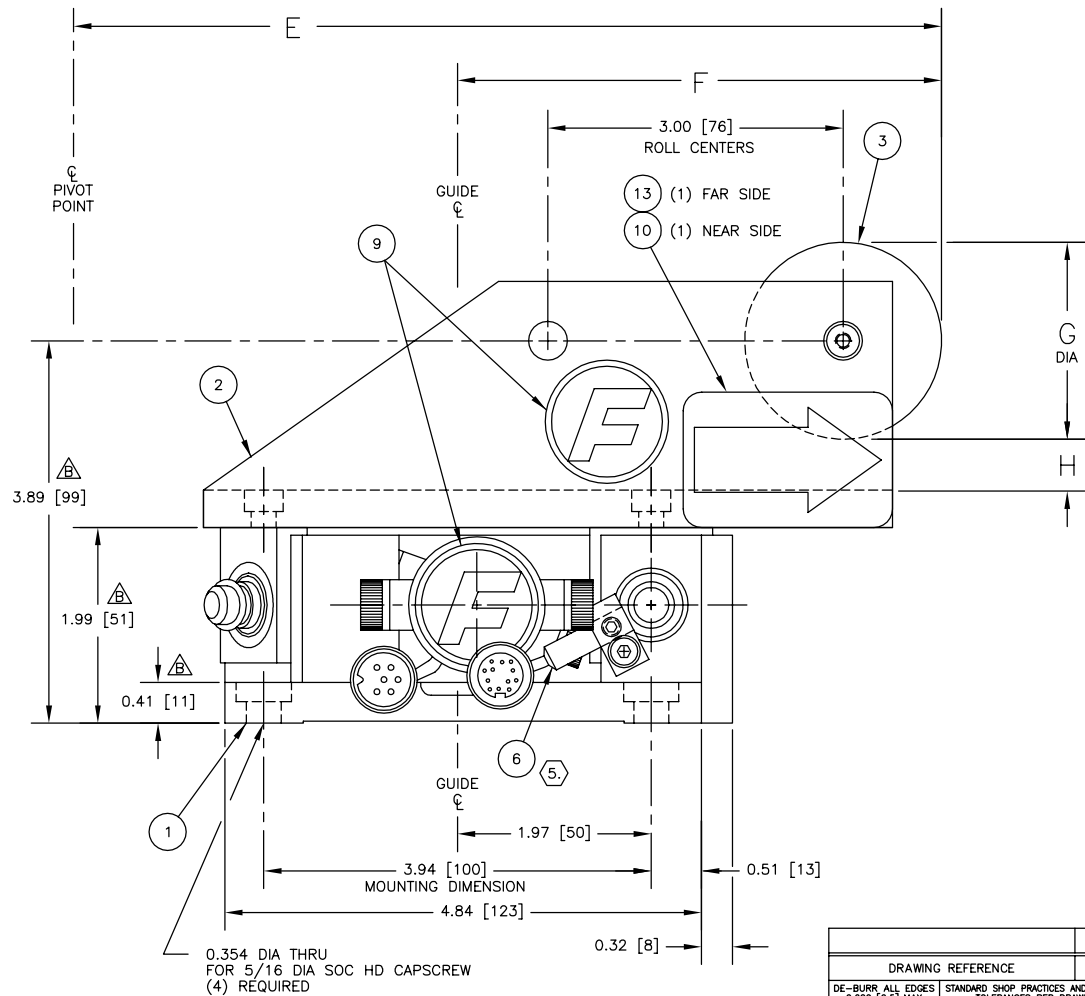
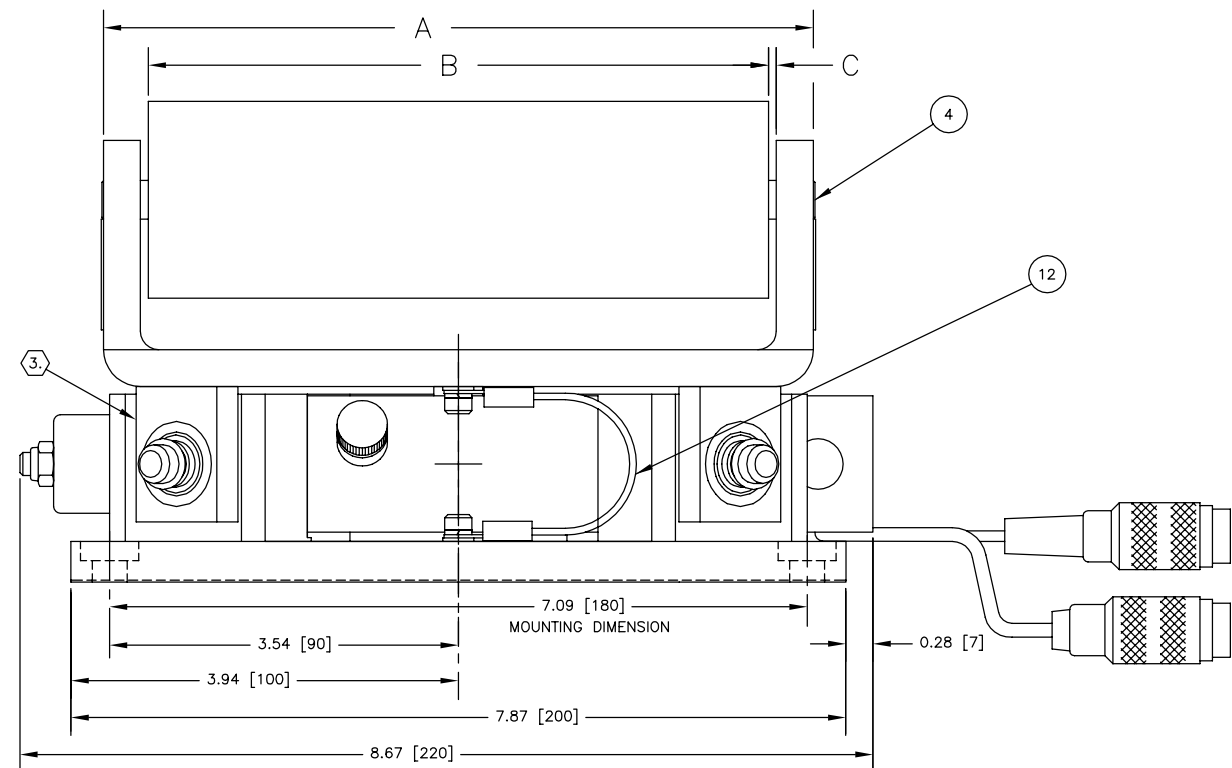


NOTES--

1. MAXIMUM ANGLE OF CORRECTION = $\pm 5.7^\circ$.
2. STANDARD FACTORY ALIGNMENT OF GUIDE ROLLERS TO EACH OTHER AND MOUNTING BASE TO BE WITHIN 0.010 TIR.
3. ALIGN THE CARRIER BLOCKS TO BE PERPENDICULAR TO THEIR RESPECTIVE RACERODS WHEN THE PIVOT CARRIER IS CENTERED AT MID-STROKE.
4. DIMENSIONS ARE INCHES [mm].
5. REFER TO SALES ORDER FOR SERVO CENTER REQUIREMENTS. IF REQUIRED, SEE SALES ORDER FOR CABLE LENGTH.
- 6.
7. NOTED DIMENSIONS APPLY WHEN ROLLER(S) HAVE RUBBER CORK TAPE WRAP.



NO. REQD																LIST OF MATERIAL					
29L61469XXX																ITEM NO.	M K	PART NO.	DESCRIPTION	MATERIAL	REMARKS
015	014	013	012	011	010	009	008	007	006	005	004	003	002	001				SYMAT 25 KANTIROLLER ASSEMBLY			
1	1	1	1	1	1	1	1	1	1	1	1	1	1	1	1		52M388221	RACEWAY BASE ASSEMBLY			
		1			1			1			1			1	2		29L82664003	PIVOT CARRIER			
	1			1			1			1				1			29L82664002	PIVOT CARRIER			
1			1			1			1			1					29L82664001	PIVOT CARRIER			
1	1	1	1	1	1	1	1	1	1	1	1	1	1	1	3		SEE TABLE	ROLLER, 2.0 DIA X 'B' FACE			
2	2	2	2	2	2	2	2	2	2	2	2	2	2	2	4		29L76882001	STUB SHAFT			
2	2	2	2	2	2	2	2	2	2	2	2	2	2	2	5		29L26704001	CUP PT SOC SET SCR, M4 X 4mm LG			
—	—	—	—	—	—	—	—	—	—	—	—	—	—	—	6		—	ISCT-03 SERVO CENTER KIT, W/CABLE		SEE NOTE 5.	
3	3	3	3	3	3	3	3	3	3	3	3	3	3	3	7		29L90907002	SOC HD CAP SCR (LOW HD), M6 X 12mm LG			
3	3	3	3	3	3	3	3	3	3	3	3	3	3	3	8		29L26715004	SPRING LOCKWASHER, M6			
3	3	3	3	3	3	3	3	3	3	3	3	3	3	3	9		29L16409001	FIFE LOGO, 1-1/4 DIA			
1	1	1	1	1	1	1	1	1	1	1	1	1	1	1	10		29L76938001	WEB DIRECTION LABEL			
1	1	1	1	1	1	1	1	1	1	1	1	1	1	1	11		29L12013001	KANTIROLLER NAMEPLATE			
1	1	1	1	1	1	1	1	1	1	1	1	1	1	1	12		29L46833005	GROUNDING STRAP KIT			
1	1	1	1	1	1	1	1	1	1	1	1	1	1	1	13		29L76938002	WEB DIRECTION LABEL			

FIFE PART NO. 29L61469XXX	A	B	C	D	E	F	G	H
001, 004, 007 010, 013	7.21 [183.1]	6.30 [160.0]	0.08 [2.0]	8.83 [224.3]	8.82 [224.0]	4.92 [124.9]	2.00 [50.8]	0.53 [13.5]
002, 005, 008 011, 014	8.79 [223.3]	7.88 [200.2]	0.08 [2.0]	10.41 [264.4]	8.95 [227.3]	5.05 [128.3]	2.25 [57.2]	0.40 [10.2]
003, 006, 009 012, 015	10.75 [273.1]	9.84 [249.9]	0.08 [2.0]	12.37 [314.2]	7	7	7	7

FIFE PART NO.	ROLLER P/N (ITEM 3)	ROLLER FINISH
29L61469001	29L76881001	STANDARD
29L61469002	29L76881002	
29L61469003	29L76881003	
29L61469004	29L76881006	
29L61469005	29L76881007	HARD COAT ANODIZE
29L61469006	29L76881008	
29L61469007	29L76881009	DE II PLASMA COAT
29L61469008	29L76881010	
29L61469009	29L76881011	RUBBER CORK TAPE
29L61469010	29L76881016	
29L61469011	29L76881017	
29L61469012	29L76881018	11036 PLASMA COAT
29L61469013	29L76881020	
29L61469014	29L76881021	
29L61469015	29L76881022	

D	ADDED P/N's -004 THRU -015. ECR #82741	CDN 02/03/16	PO 02/03/16
C	ITEM 1 P/N WAS 76943-015 ECR #80168	BP 05/12/14	PO 05/12/14
B	ITEM 1 P/N WAS 76943-010 3.89 DIM WAS 3.87 1.99 DIM WAS 1.97 0.41 DIM WAS 0.39 ECR #65515	PO 01/19/05	RDF 01/19/05
A	REVISED TO CURRENT ENG STANDARDS. ITEM 1 WAS P/N 76943-005. MOVED ITEM 10, P/N 76938-001 AND REVISED THE NOTES. ECR #63704	DW 06/10/04	RDF 06/10/04

SYM	REVISION	BY DATE	APVD
BY	DATE		
DRAWN CR	10/10/97		
CHECKED RDF	10/11/97		
APPROVED KIH	10/11/97		
TITLE			
FIFE SYMAT 25 KANTIROLLER ASSEMBLY (INSTALLATION) WITH SINGLE ROLLER			
DRAWING NO. 61469		SHEET NO. 1 OF 1	REV D

DRAWING REFERENCE		NUMBER
DE-BURR ALL EDGES 0.020 [0.5] MAX	STANDARD SHOP PRACTICES AND STANDARD SHOP TOLERANCES PER DRAWING 40400	
UNLESS OTHERWISE SPECIFIED: GENERAL TOLERANCES: AND Y14.5M GEOMETRICAL SYMBOLS: ANSI Y14.5M SURFACES: ANSI Y14.5M		
This drawing is the property of FIFE CORPORATION. It is loaned with the understanding that it may not be reproduced nor may the information contained herein be used for the making of drawings or for manufacturing purposes without the written consent of FIFE CORPORATION.		
THIRD ANGLE PROJECTION	SCALE	SIZE
	NONE	D