



NOTE—
 1. DIMENSIONS ARE IN INCHES. FOR MILLIMETERS
 MULTIPLY BY 25.4.

2. AN OPTIONAL SENSOR MOUNTING BAR IS
 AVAILABLE FOR USE WITH SOME SENSORS.
 SENSOR MOUNTING ONLY AVAILABLE FOR WRAP
 STYLE EXITING TOWARDS THE RACEWAY BASE.

F = 6.30, 7.88, 9.84

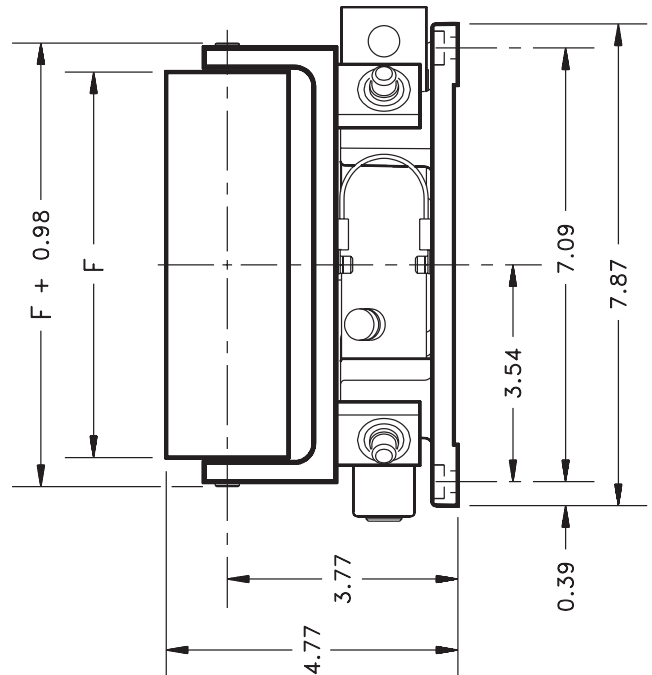
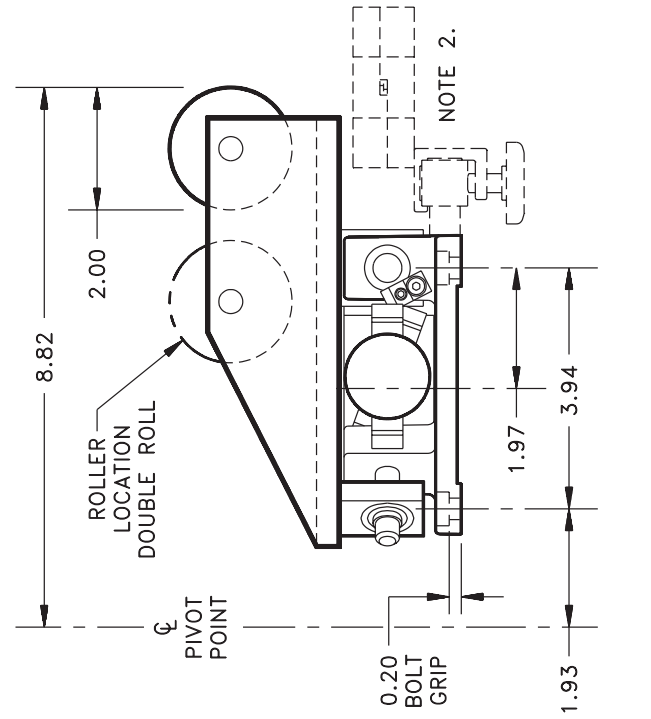
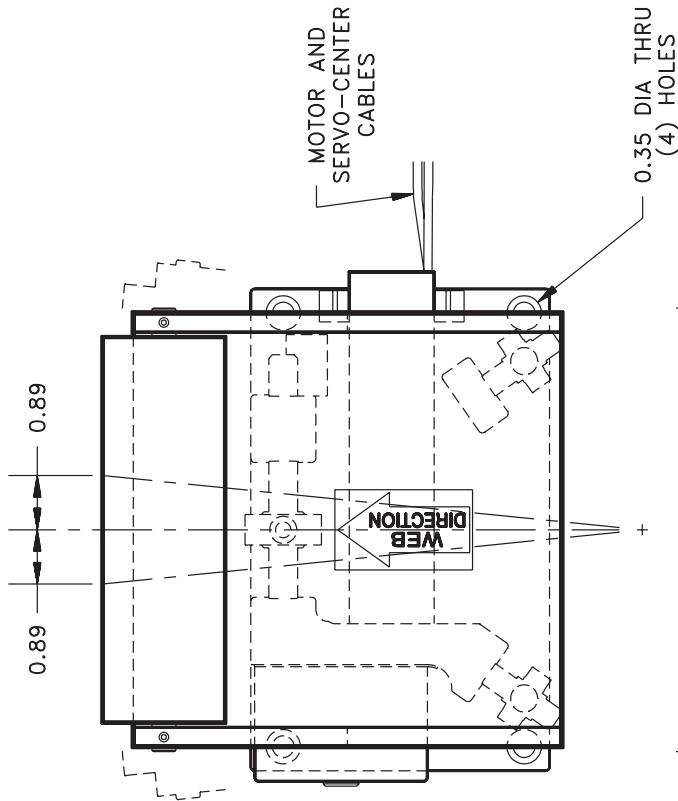
Tmax = 34.0 lbs FOR 'S' WRAP STYLES

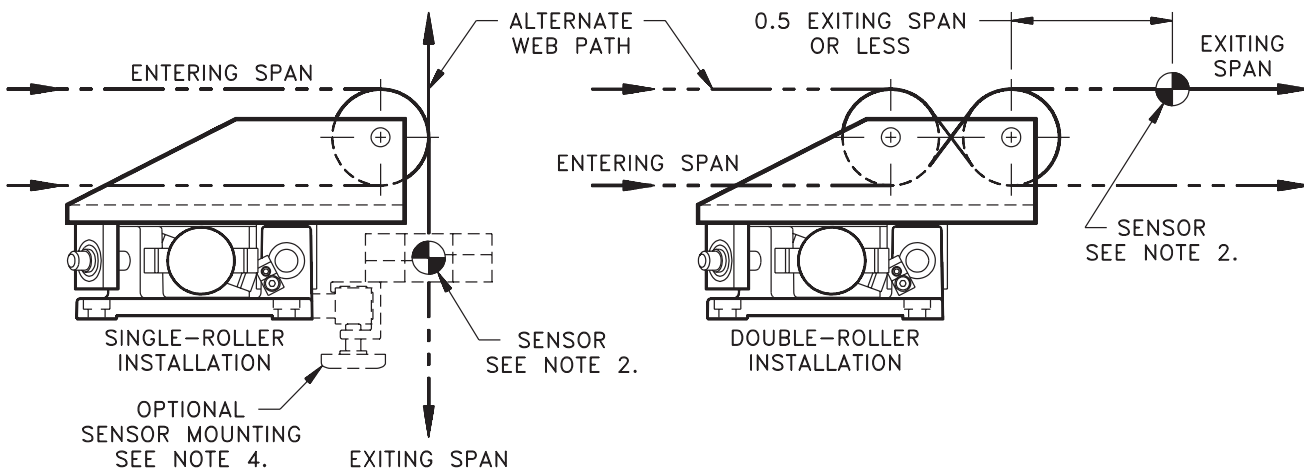
Tmax = 45.0 lbs FOR OTHER WRAP STYLES

Vmot = 1.77 (in/sec)

Vcorr = 2.67 (in/sec)

WEIGHT = max 11.0 lbs





NOTES:

1. For satisfactory guiding results, do not exceed a maximum of 20 inches in the free entering web span. The greater the error to be corrected, the greater the required free entering span must be. Also, stiff webs under high tension require long entering spans; flexible webs under low tension will require less.
2. Install the sensor downstream from the Symat 25 Kantiroller and as close to it as practical. The sensor

should never be farther from the guide roll than 0.5 of the exiting span.

3. Where it is needed, a roller or a deadbar should be used to hold the plane of the exiting web constant and stabilize the web edge at the sensor.
4. An optional sensor mounting bar can be installed for use with some sensors. This option is available for wrap styles that have a web exit towards the raceway base as shown.