



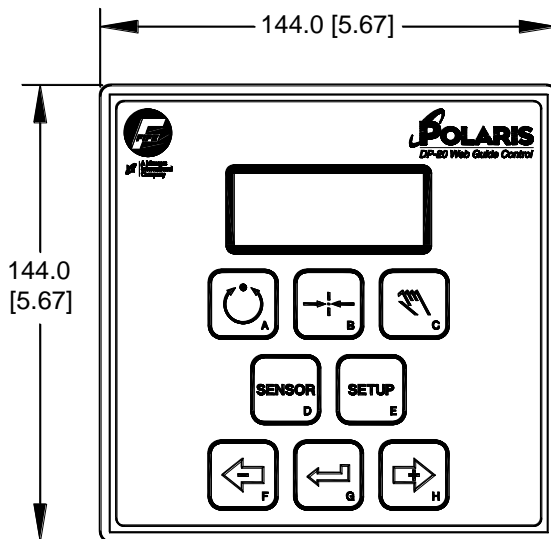
## Fife Corporation

P.O. Box 26508, Oklahoma City, OK 73126, USA  
Phone: 405.755.1600 / Fax: 405.755.8425  
www.fife.com / E-mail: fife@fife.com

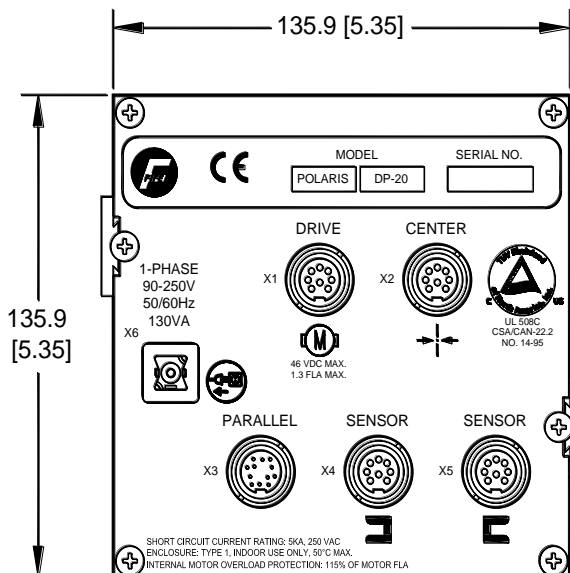
## INSTALLATION INSTRUCTIONS

### POLARIS DP-20 WEB GUIDE CONTROLLER

#### POLARIS DP-20 WEB GUIDE CONTROLLER



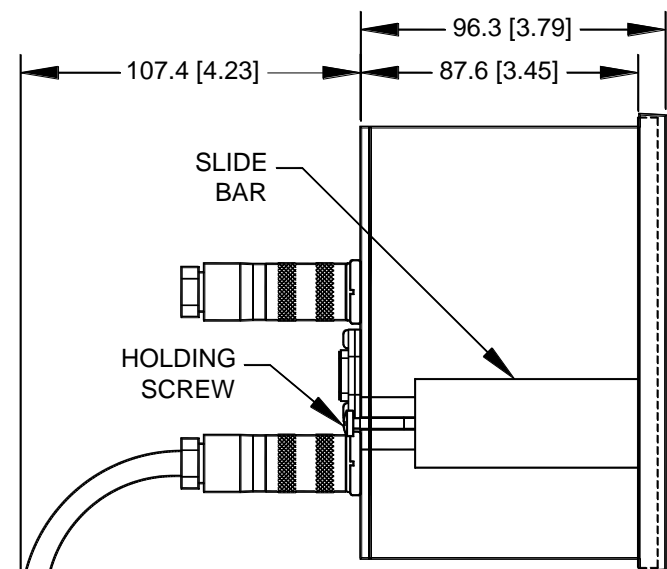
**Figure 1.**  
Front View



**Figure 2.**  
Rear View  
(shown without connectors)

#### DP-20 Panel Mount

- Prior to installing remove Holding Screws and Slide Bars and place DP-20 into metal cutout.
- After placement re-install Slide Bars and Holding Screws. Tighten Holding Screws until the DP-20 is secure in the panel.
- NOTE: All dimensions and specifications are in mm [inches] unless specified otherwise.



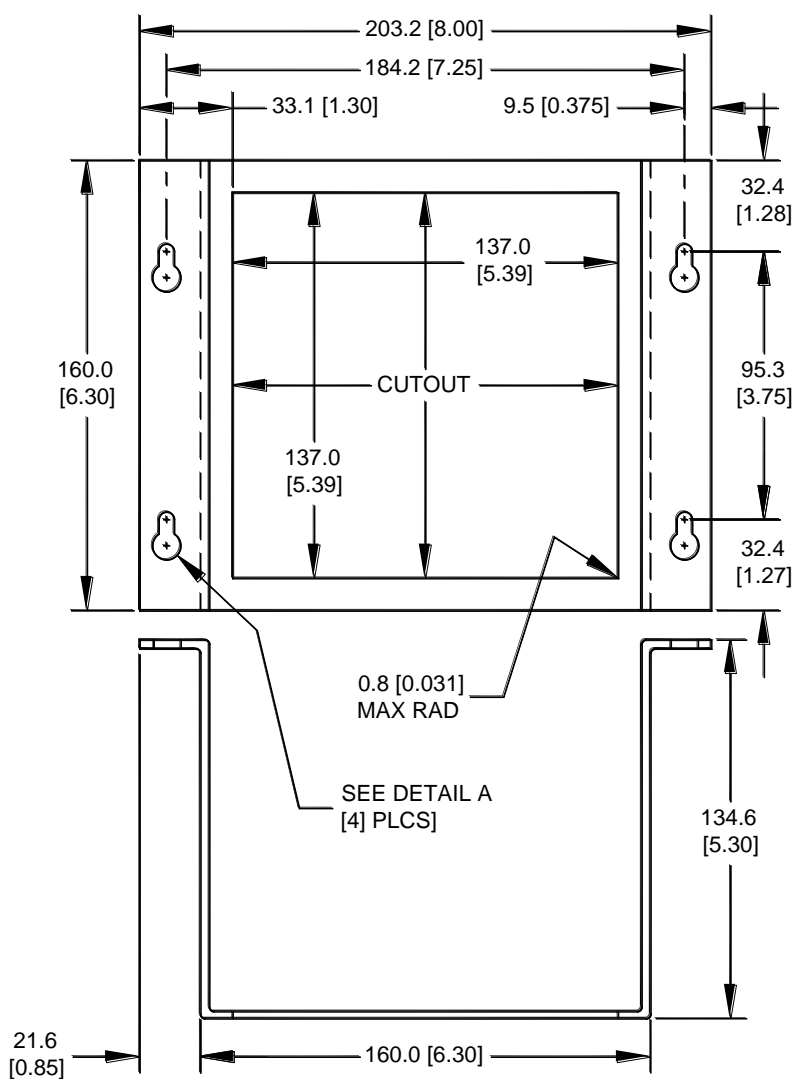
**Figure 3.**  
Side View  
(shown with cable max bend radius)



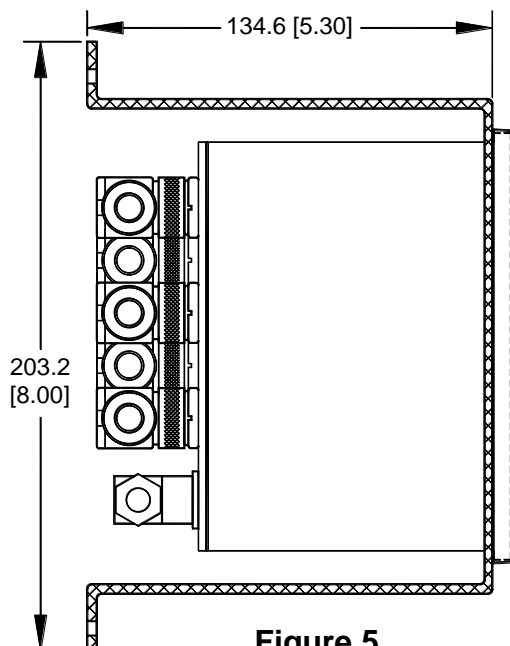
# INSTALLATION INSTRUCTIONS POLARIS DP-20 WEB GUIDE CONTROLLER

## DP-20 With Wall Mount Bracket

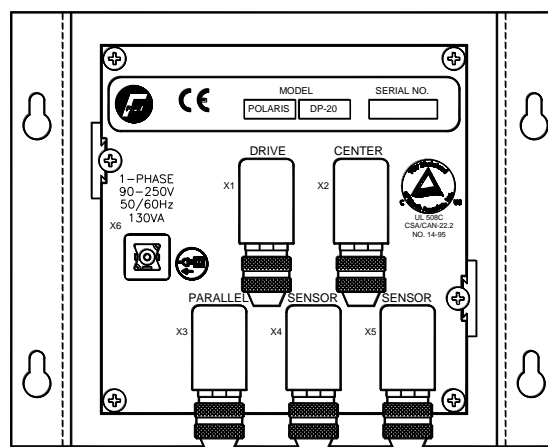
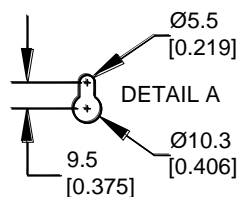
- Prior to installing remove Holding Screws and Slide Bars and place DP-20 into metal cutout.
- After placement re-install Slide Bars and Holding Screws. Tighten Holding Screws until the DP-20 is secure in the bracket.
- NOTE: All dimensions and specifications are in mm [inches] unless specified otherwise.



**Figure 4.**  
Wall Mount Bracket



**Figure 5.**  
Bottom View Bracket/DP-20 Assy  
(shown with 90 degree connectors)



**Figure 6.**  
Rear View Bracket/DP-20 Assy  
(shown with 90 degree connectors)



---

## General Information

---

### NOTES:

- 1) Serial Number, Model Number and power supply voltage of the web guide controller are shown on the back of the housing.
- 2) All dimension and specification are in mm [inches] unless specified otherwise.
- 3) The DP-20 Signal Processor can accommodate any of the following Fife Corporation motors:

Motor	Typical Use
0.6 amp	Symat 25 Sensor Positioner
1.3 amp	Symat 50/70 Sensor Positioner

The DP-20 can also be used with one hydraulic servo valve system with/without lockout valve, or one MPA.

---

## Product Specifications

---

<b>Universal Input Line Voltage Range</b>	100 VAC-10% to 240 VAC+10%	<b>Supply To Accessories</b>	+12V $\pm$ 5%, 400mA -12V $\pm$ 5%, 150mA
<b>Input Line Frequency</b>	47-63 Hz	<b>Parallel I/O</b>	Six digital inputs referenced to ground, (24V max, 6mA), and two open collector outputs, (30V max, 55mA).
<b>Power Consumption</b>	130 VA		
<b>Internal Fuse</b>	3.15 A		
<b>Maximum Actuator Output</b>	39W at 30V	<b>Servo Center</b>	Analog inductive type
<b>Maximum Lockout Valve Output</b>	39W at 24V or 48V	<b>Operating Ambient Temperature</b>	0 to 50°C (32 to 122°F)
<b>Current Source Output</b>	$\pm$ 50mA for hydraulic servo valve, or $\pm$ 10mA for MPA with MPA lockout signal	<b>Approximate Weight</b>	1.6Kg (3.5 lbs)
		<b>Protection Class</b>	IP 54
<b>Sensor Input (2) Individually Programmable</b>	Up to two edge sensors Max input $\pm$ 20mA, 0 to 10 mA (preferred) or one SE-26A line sensor Max input $\pm$ 20mA.	<b>Product Certification</b>	CE TUV Rheinland of North America to UL 508C and CSA/CAN-C22.2 No. 14-95



**INSTALLATION INSTRUCTIONS**  
**POLARIS DP-20**  
**WEB GUIDE CONTROLLER**

---