



## Reliable Slit Web Separation and Wrinkle Removal

Webex Bowed Rolls are built tough for years of continued use at all specified speeds. Available in permanent bow and adjustable bow models, they feature proven mounting solutions that ensure ease of installation and extended versatility in web control.

The even distribution of lateral tension and vibration-free operation provided by these rolls is ideal for the separation of slit webs, elimination of web wrinkles, slack edges and soft spots.



## GENERAL SPECIFICATIONS

DIAMETER	AJUSTA-BOW	PERMA-BOW
1 1/2 Inches		●
3 1/2 Inches	●	●
4 Inches	●	●
4 1/4 Inches	●	●
4 1/2 Inches	●	●
5 1/4 Inches	●	●
5 1/2 Inches	●	●
6 1/4 Inches	●	●
6 1/2 Inches	●	●
7 1/2 Inches		●

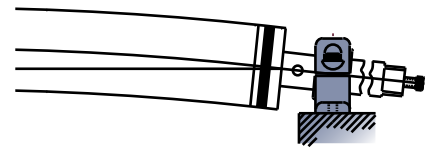
## KEY FEATURES

- Precision-engineered mounts and bearing housings simplify bowed roll installation and service
- Bowed roll coverings are available; from abrasion and heat resistant to high-release or dielectric properties
- Optional adjustable mounts let you rotate the roll apex while running at full line speeds to achieve optimal web engagement and control
- Optional outer sleeves made of highly durable synthetic rubber compounds and specified to each application
- Corded sleeves available for high operating speeds

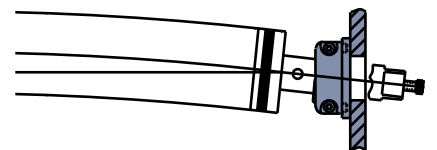
## MOUNTING OPTIONS



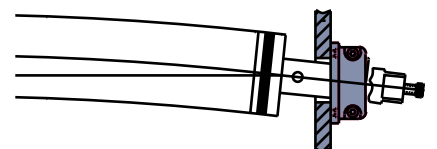
**Perma-Bow**  
Shown with adjustable bearing mounts and standard nitrile cover



Mount on top of frame



Mount inside of frame



Mount outside of frame



**Adjusta-Bow**  
Shown with standard pedestal mounts and optional hypalon cover

## RECOMMENDED WRAP AND BOW

APPLICATION	MATERIAL	WRAP ANGLE	BOW (% OF COVER LENGTH)
Slit Separation	Film	30° - 150°	0.5% - 0.75%
	Paper	30° - 150°	0.5% - 0.75%
Wrinkle Removal	Film	30° - 90°	1% - 1.125%
	Paper	20° - 90°	1.25% - 1.5%
	Textiles and Nonwovens	45° - 120°	2% - 2.5%
Increase Width	Textiles and Nonwovens	60° - 150°	5% - 7%

# MAXCESS

EUROPE, MIDDLE EAST  
AND AFRICA  
Tel +49.6195.7002.0  
Fax +49.6195.3018  
sales@maxcess.eu  
www.maxcess.eu

NORTH, CENTRAL  
AND SOUTH AMERICA  
Tel +1.405.755.1600  
Fax +1.405.755.8425  
sales@maxcessintl.com  
www.maxcessintl.com

CHINA  
Tel +86.756.881.9398  
Fax +86.756.881.9393  
info@maxcessintl.com.cn  
www.maxcessintl.com.cn

JAPAN  
Tel +81.43.421.1622  
Fax +81.43.421.2895  
japan@maxcessintl.com  
www.maxcess.jp

INDIA  
Tel +91.22.27602633  
Fax +91.22.27602634  
india@maxcessintl.com  
www.maxcess.in

