



Slitting Safety & Reliability?

TIDLANDS electrical knifeholder “Control” & “Control+” are the perfect tools for this goal. Reliable slitting results thanks to the calibrated, user-independent, adjustment of the cut parameters through the automatic knifeholder adjustment, incl. control of the slit parameters on a large LED display and the safe handling of the knifeholder, with the addition of the 360° blade protection, this is what the new TIDLAND e-Knifeholder “Control” stands for. Even a constant cutting force control with real-time monitoring is possible with the “Control +” e-Knifeholder.

With setups in seconds without operator intervention, TIDLANDS e-Knifeholder allows for most reliable and consistent results, while minimizing the setup times and cost between runs.

In addition to the simple LED backlit display, the knifeholder can also be operated via PLC control or through standard Windows-based systems. With the optional Wi-Fi capability, making even control with a smartphone or on a tablet possible.

GENERAL SPECIFICATIONS

	Class II	Classe III
min. slit width	50.8 mm / 2"	76.2 mm / 3"
max. speed*	1675 m/min	3000 m/min
Power supply	24 VDC	24 VDC
Blade diameter	Ø 150 mm (5.90")	Ø 200 mm (7.87")
automatic calibrate accuracy	+/- 0.226 kg / 0.5 lb side force	
	+/- 0.076 mm / 0.003" down stroke	

* dependant on material and application

KEY FEATURES

- Minimized operator intervention results in a safe, consistent and reliable slitting result
- Reduction of operator caused handling mistakes through auto-calibration and parameter set-up
- Lower slitting costs thanks to minimum set-up times and possible blade wear optimization
- Reliable slitting result through consistent cutting parameter
- LED-backlit display for easy handling and control
- Operation through knifeholder, PLC or standard windows based devices

Options

- e-Knifeholder „Control+“ with side force control and real-time monitoring
- Wireless operation from any Wi-Fi enabled device, such as smartphone or tablet

DESCRIPTION AND DIMENSIONS

Single Power and Communications Cable

Dust-Free, Water-Resistant Enclosure

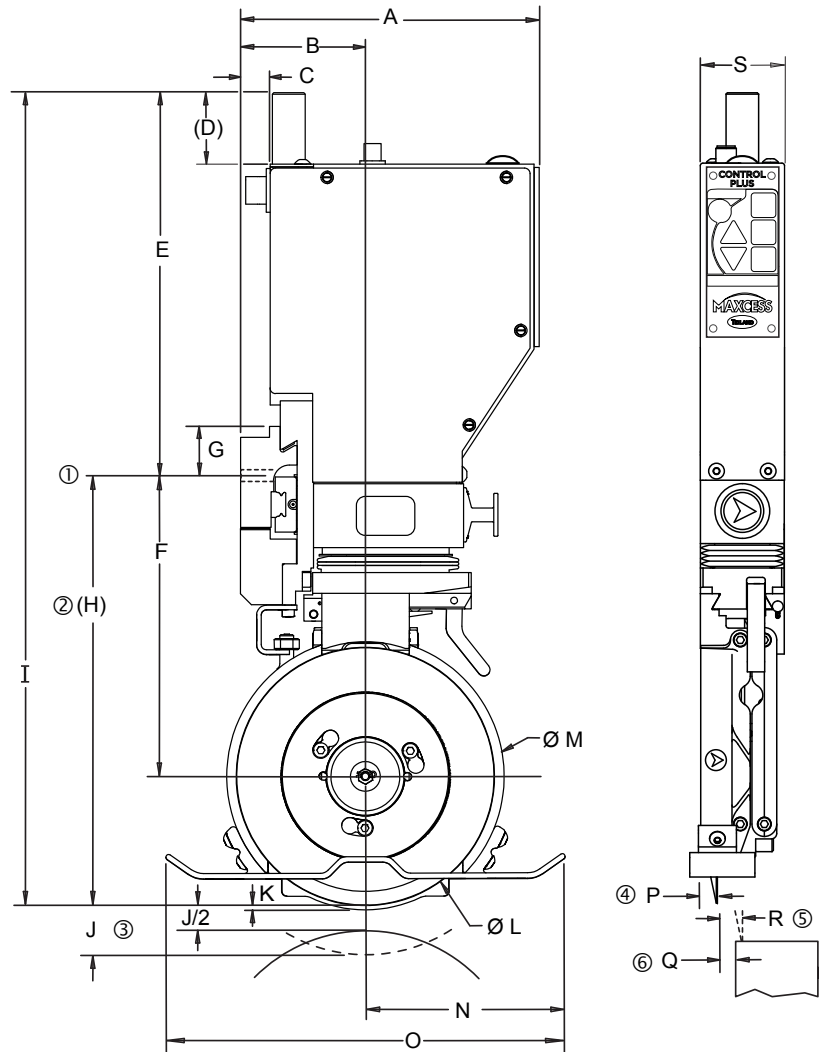
Status LED

LCD Touchscreen

Cant Key

Removable and Reversible Cartridge

360° Blade Guard



1	Centre of guide bar mounting holes	4	Retracted blade position
2	Retracted knifeholder	5	Maximum lateral stroke
3	Maximum vertical stroke	6	Half stroke position

e-KNIFEHOLDER CONTROL & CONTROL+

	A	B	C	D	E	F	G	H	I	J	K	L	M	N	O	P	Q	R	S
Class II	178.6	74.7	18.8	44.4	223.0	173.0	31.2	247.9	470.9	24.5	2.4	150.1	160.8	115.8	231.6	12.4	1.5	3.3	49.3
Class III	189.5	87.6	15.5	18.8	171.7	196.6	31.2	296.7	468.1	25.4	3.8	199.9	212.1	127.5	255.3	16.5	3.0	6.3	73.9



EUROPE, MIDDLE EAST AND AFRICA

Tel +49.6195.7002.0
Fax +49.6195.3018
sales@maxcess.eu
www.maxcess.eu

NORTH, CENTRAL AND SOUTH AMERICA

Tel +1.405.755.1600
Fax +1.405.755.8425
sales@maxcessintl.com
www.maxcessintl.com

CHINA

Tel +86.756.881.9398
Fax +86.756.881.9393
info@maxcessintl.com.cn
www.maxcessintl.com.cn

JAPAN

Tel +81.43.421.1622
Fax +81.43.421.2895
japan@maxcessintl.com
www.maxcess.jp

INDIA

Tel +91.22.27602633
Fax +91.22.27602634
india@maxcessintl.com
www.maxcess.in

