

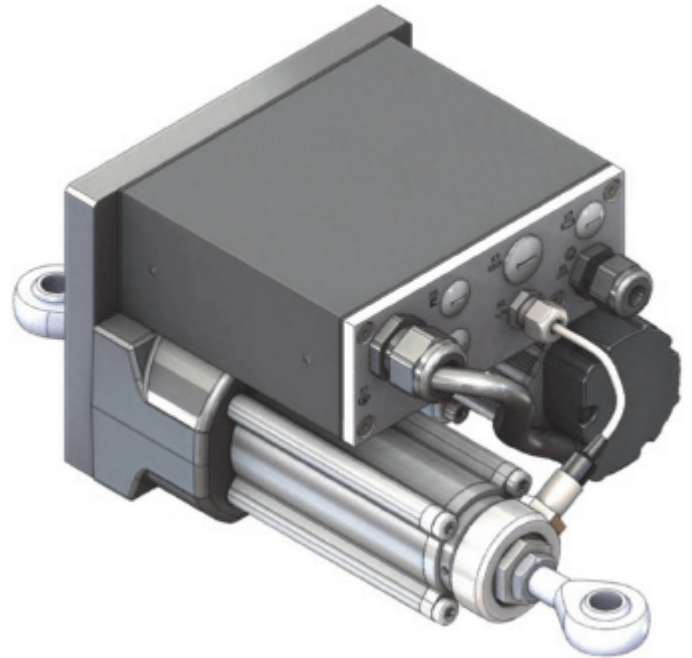
MAXCESS



The Fife GMA-BL linear actuator combines processor and mechanics in one single, compact unit, easy to install and integrate in any machine such as slitter rewinders. After installing the actuator, it is sufficient to mount the color touch screen control panel and the sensor.

This actuator family is also available on our OPG-type guiding systems, where it can be supplied completely preassembled and prewired, ensuring the quickest and easiest installation. This allows the color touch screen to be mounted in the desired position.

The color touch-screen panel can be wall- or panel-mounted and has a single cable connection to the actuator. It features an operator-friendly graphic and text interface, with 14 different languages.



GENERAL SPECIFICATIONS

Power Supply

24 VDC ($\pm 25\%$)
Current 7,3 A; max

Certifications

CE, CAN/CSA-C22.2, CB,
UL61010

Protection Class

IP-52

Temperature Range

0 – 50°C

Stroke

50 mm – 305 mm

Mounting Options

Rod End, Clevis, Flange, and
Rectangular

Inputs and Outputs

Six digital inputs,
two digital outputs

Sensors

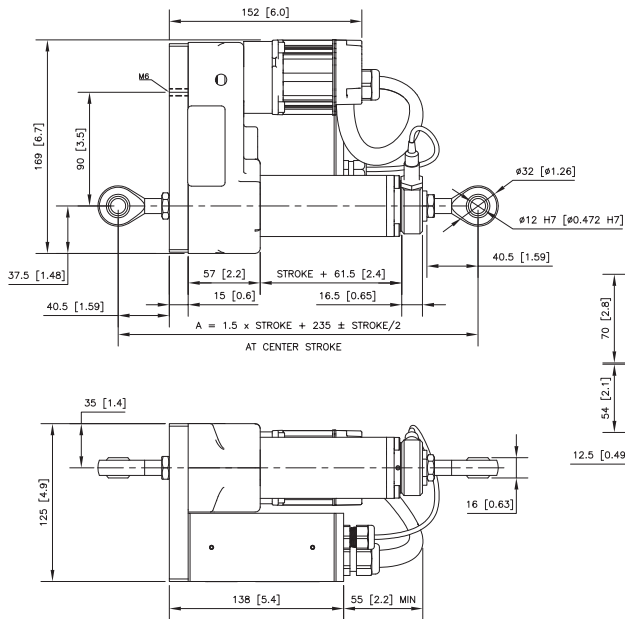
2 inputs,
+ / - 20 mA
individually programmable,
0 – 10 mA Fife standard

KEY FEATURES

- Integrated design for easy installation
- Brushless motor design means little to no maintenance
- Low inertia motor allows for faster actuator speeds
- Color Touch Screen is easy to learn and operate
- Operation in 14 standard languages improves operator understanding
- Geared actuator can be optimized for thrust or speed
- Optional wall mount and panel mount available for Operator Interface

LINEAR ELECTRO-MECHANICAL ACTUATOR

GMA-BL TOP MOUNT



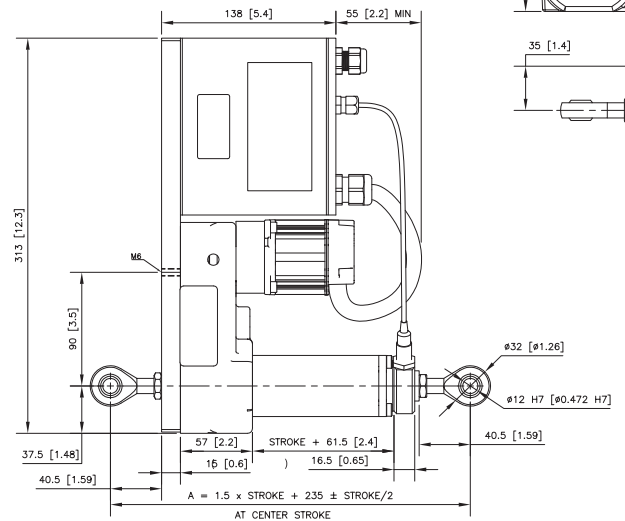
GMA-BL- a - b - ccc - d - 2 - ISCT - Z12

(a) = Motor Size
1 = Size 1
2 = Size 2

(b) = Gear Ratio
1 = 1.00
2 = 2.25
3 = 3.00
4 = 3.60
5 = 5.14
6 = 6.00
8 = 7.71

(CCC)	STROKE
050	50
076	76
100	100
127	127
152	152
160	160
178	178
203	203
229	229
254	254
279	279
305	305

GMA-BL SIDE MOUNT



Dimension shown in mm [inches].

(d) = Controller Orientation
0 = none

MODEL	MAXIMUM SHIFTABLE LOAD* [kg]	MAXIMUM DESIGN THRUST [N]	MAXIMUM ACTUATOR SPEED [mm/s]
GMA-BL-1-3	1,043	614	59.5
GMA-BL-1-6	2,000	1177	29.8
GMA-BL-1-8	2,570	1512	23.2
GMA-BL-2-3	1,328	781	51.0
GMA-BL-2-6	2,545	1497	25.5
GMA-BL-2-8	3,269	1924	19.8

*The standard coefficient of friction is 0.06 for rolling bearings.



EUROPE, MIDDLE EAST AND AFRICA

Tel +49.6195.7002.0
Fax +49.6195.7002.933
sales@maxcess.eu
www.maxcess.eu

INDIA

Tel +91.22.27602633
Fax +91.22.27602634
india@maxcessintl.com
www.maxcess.in

NORTH, CENTRAL AND SOUTH AMERICA

Tel +1.405.755.1600
Fax +1.405.755.8425
sales@maxcessintl.com
www.maxcessintl.com

JAPAN

Tel +81.43.421.1622
Fax +81.43.421.2895
japan@maxcessintl.com
www.maxcess.jp

CHINA

Tel +86.756.881.9398
Fax +86.756.881.9393
info@maxcessintl.com.cn
www.maxcessintl.com.cn

KOREA, TAIWAN AND SE ASIA

Tel +65.9620.3883
Fax +65.6235.4818
asia@maxcessintl.com