

## ACCURATE LOAD MEASUREMENT IN RUGGED ENVIRONMENTS

When installed at both ends of a sensing roll, MTS tension measuring units accurately measure the total strip tension force acting on the roll, independent of strip width or location. Built for extreme environments, the MTS family are ideal for applications ranging from 20 kN to 200 kN. IP67 Protection ensures reliable operation in applications where wash-downs are required.

MTS tension measuring units are easily added to an existing line. Customized top plates or top plate adapter kits are also available for special applications.

Standard MTS pillow block load cells consist of bottom plate, customized top plate and two load cells. Design with one dummy instead of load cell is possible.

Due to the cylindrical design of the load cells, the measuring direction can be exactly oriented to the strip tension resultant.

## TECHNICAL SPECIFICATION

**Gauge Resistance:**  
350  $\Omega$

**Excitation Voltage:**  
10VDC nominal

**Output Signal:**  
2.04 mV / V

**Operating Temperature:**  
-30 ° to 80 °C

**Accuracy error**  
**Repeatability:**  
< 0.1 % of full scale maximum  
< 0.5 % with one dummy

**Climate Class:**  
3K4 (EN60721)

**Protection Class:**  
IP67 (EN60529)

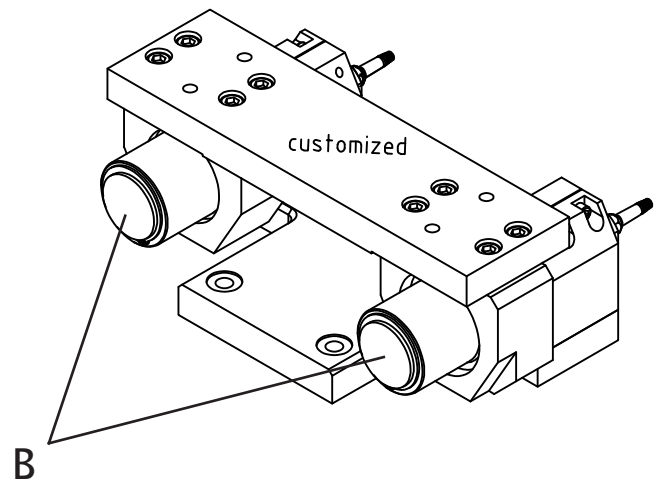
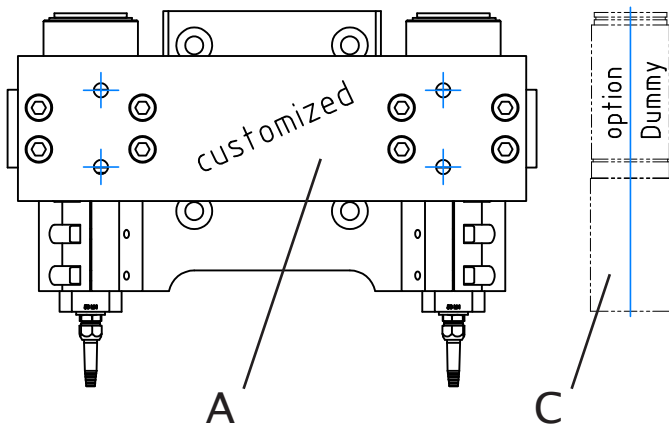
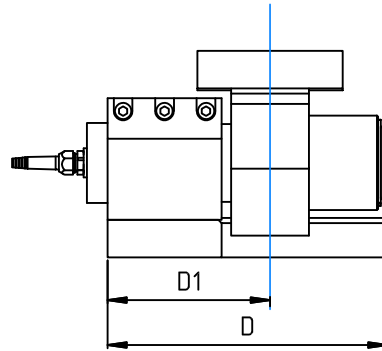
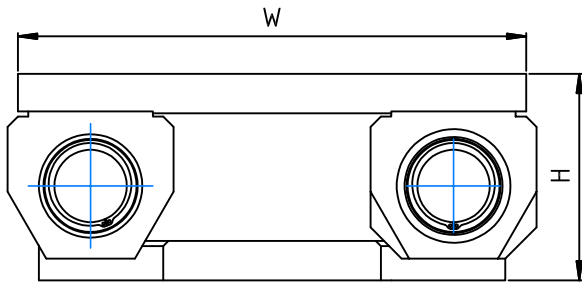
**Cable:**  
4-conductor cable included

## KEY FEATURES

- Three sizes with five sensing ranges from 20 kN to 200 kN
- Rugged construction and IP67 rating for harsh environments
- Full Wheatstone Bridge ensures the highest levels of accuracy to reduce scrap and increase efficiency
- Pre-drilled and tapped top plate for easy mounting to existing pillow block bearings
- Compatible with all MAGPOWR load cell amplifier of the series DLCA-NET to provide strip tension from left side, right side and sum over communication of EtherNet/IP, PROFINET, Modbus-TCP or EtherCAT

# MTS TENSION MEASURING UNIT

## DIMENSIONS



- A customized top plate for pillow block bearing
- B standard MTS pillow consisting of 2 load cells
- C optional design with 1 dummy instead of a load cell possible

Tension Range	Width	Height	Depth	
	W	H	D	D1
20 kN, 40 kN, 60 kN	350	165	190	110
100 kN	490	200	270	157
200 kN	570	219	293	167

Dimensions shown in mm



EUROPE, MIDDLE EAST  
AND AFRICA  
Tel +49.6195.7002.0  
sales@maxcess.eu  
www.maxcess.eu

NORTH, CENTRAL  
AND SOUTH AMERICA  
Tel +1.405.755.1600  
sales@maxcessintl.com  
www.maxcessintl.com

CHINA  
Tel +86.756.881.9398  
info@maxcessintl.com.cn  
www.maxcessintl.com.cn

JAPAN  
Tel +81.43.421.1622  
japan@maxcessintl.com  
www.maxcess.jp

INDIA  
Tel +91.22.27602633  
india@maxcessintl.com  
www.maxcess.in

