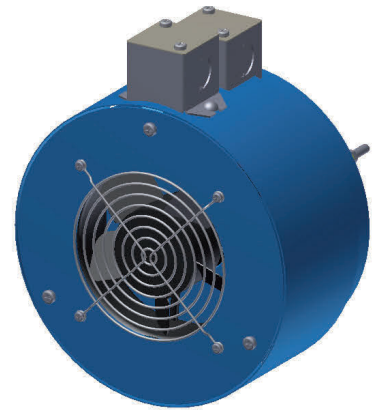




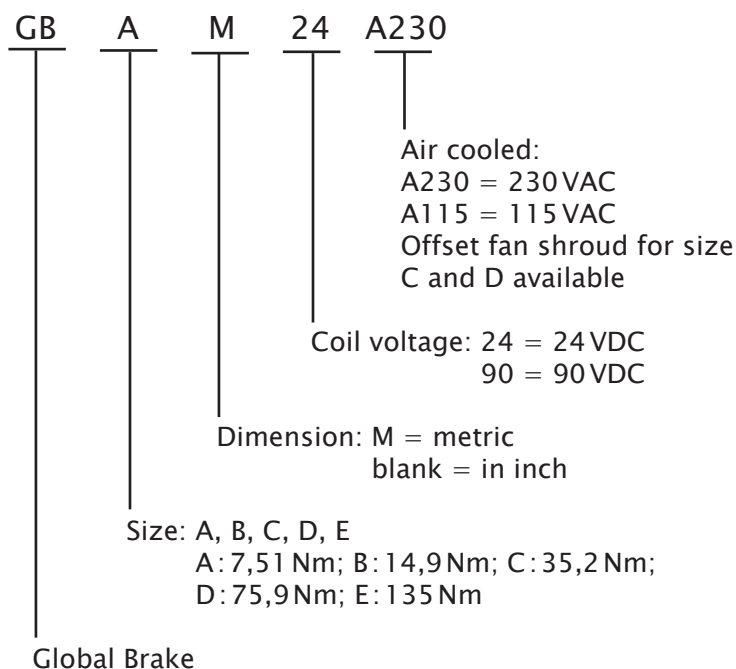
Global brakes represent the state-of-the-art in magnetic particle technology. The latest materials and components, modern CNC manufacturing techniques and a sleek design make these brakes the first choice of engineers designing machines or retrofits.

Smooth controllable torque, torque repeatability and torque independent of speed make these brakes suitable for many power transmission and tensioning applications.

Long life is assured by polished seal surfaces, high temperature materials and rugged construction. This line features compact size with through bores and all machined housings for ease of mounting.



## MODEL NUMBERS



## KEY FEATURES

- Compact size and through bores for easy mounting to existing machine frames or shafts
- Magnetic Particle technology provides smooth, repeatable torque independent of speed
- Global brakes provide clean and quiet operation in all load conditions
- Five sizes with true metric and imperial bores and keyways
- Fast delivery
- Rugged construction and no parts to wear out over time ensure long life
- Compatible with all MAGPOWR tension controls

# MAGPOWR GLOBAL BRAKE

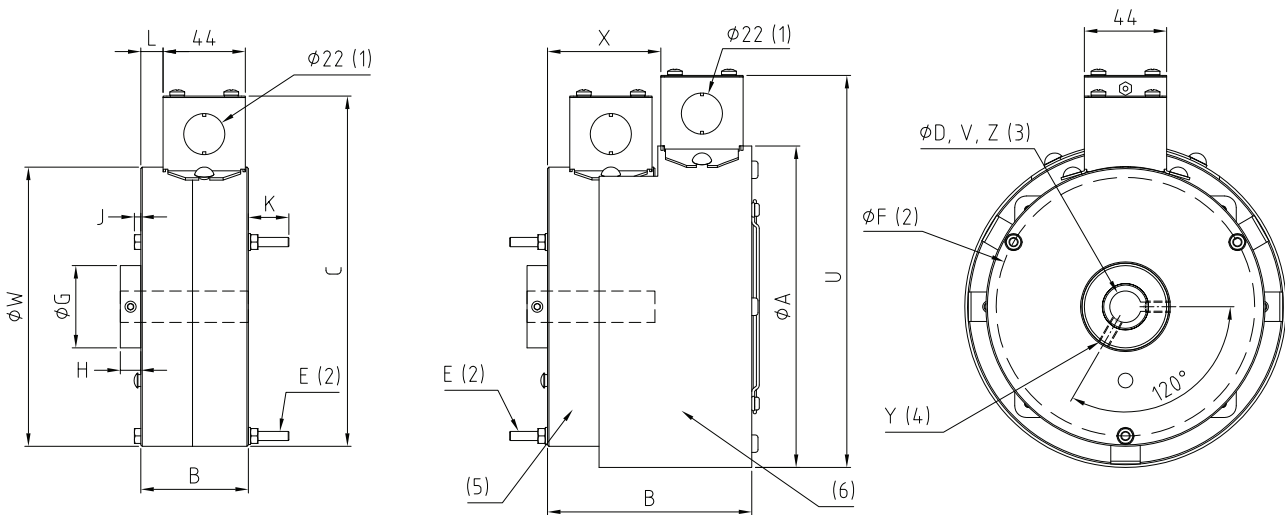
Model	Rated torque [Nm]	Non excited drag torque 1800 1/min [Nm]	Heat dis- sipation at 1800 1/min [W]	Inertia of rotating members [kgm <sup>2</sup> ]	Weight [kg]	24 V Coil data		Time constants**	
						Rated current* [A]	Ohms bei 20°C [Ω]	Current [s]	Torque [s]
GBAM24	7,5	0,09	88	0,00055	5	0,67	20,8	0,06	0,22
GBAM24A230			295		7				
GBBM24	14,9	0,09	85	0,0013	7	0,89	15,7	0,09	0,18
GBBM24A230			351		8				
GBCM24	35,2	0,31	155	0,0034	11	1,11	13,2	0,1	0,28
GBCM24A230			556		13				
GBDM24	75,9	0,76	195	0,013	17	1,42	10,2	0,16	0,36
GBDM24A230			657		19				
GBEM24	135	1,76	320	0,014	34	1,46	9,9	0,56	1,38
GBEM24A230			1230		39				

\* Rated current is the current which will occur from a 24VDC input to the brake when the unit is operated at its rated temperature (maximum heat dissipation).

\*\* The time for current or torque to reach 63% of the final value after step function voltage is applied.

Fan power requirements: 230 VAC, 0.09 A or 115 VAC, 0.19 A

Brake must be mounted on a shaft with "floating" torque arm, to prevent overloading bearings.



(1) Grommet with knockout on each side

(2) "E" bolts on "F" dia. bolt circle. 3 bolts on size A, B, C, D.

4 bolts on size E.

Bolts are reversed on fan cooled units.

(3) "D" bore, "V" deep with "Z" keyway

(4) 2 set screws "Y"

(5) Brake

(6) Fan shroud

Model	A	B	C	D	E	F	G	H	J	K	L	U	V	W	X	Y	Z
GBAM24	-	57	173	14H8	M5x0,8	122,2	35	9	4	23	12	-	67	135	-	M5x0,8	none
GBAM24A230	174	110								21		212			60		
GBBM24	-	58	189	17H8	M5x0,8	139,7	45	11	4	22	12	-	69	151	-	M6x1	5x2,5
GBBM24A230	174	110								20		212			61		
GBCM24	-	63	229	19H8	M6x1	176,2	48	11	4	27	15	-	75	190	-	M6x1	6x3
GBCM24A230	207	116								25		246			67		
GBDM24	-	71	265	25H8	M8x1,25	209,6	60	13	6	29	19	-	84	225	-	M8x1,25	8x3,5
GBDM24A230	241	123								27		282			75		
GBEM24	-	83	341	35H8	M8x1,25	282,6	70	22	6	37	25	-	111	301	-	M10x1,5	10x4
GBEM24A230	317	142								35		358			87		



Metric models, Dimensions in mm

EUROPE, MIDDLE EAST  
AND AFRICA

Tel +49.6195.7002.0  
sales@maxcess.eu  
www.maxcess.eu

NORTH, CENTRAL  
AND SOUTH AMERICA

Tel +1.405.755.1600  
sales@maxcessintl.com  
www.maxcessintl.com

CHINA

Tel +86.756.881.9398  
info@maxcessintl.com.cn  
www.maxcessintl.com.cn

JAPAN

Tel +81.43.421.1622  
japan@maxcessintl.com  
www.maxcess.jp

INDIA

Tel +91.22.27602633  
india@maxcessintl.com  
www.maxcess.in



©2017 Maxcess

M168710