

MAGPOWR TLCB THIN LOAD CELLS

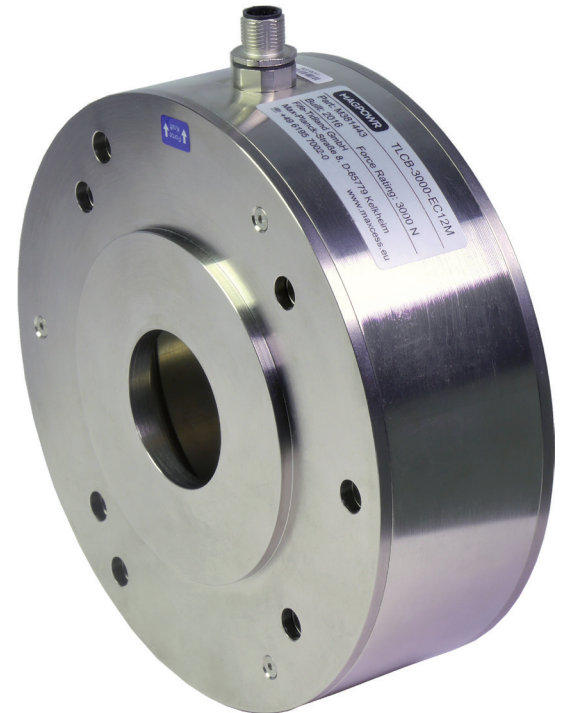


The MAGPOWR TLCB load cells are extremely accurate devices used to measure web tension in any unwind, rewind or intermediate web processing application.

The TLCB line of load cells deliver precise web tension with low temperature drift due to a full Wheatstone bridge construction. The load cells allow measurement and 10 times overload protection in both force directions.

With a low profile design, space between the machine frames dedicated to the load cell is minimized. The load cells can also be mounted on the outside of the machine frames, eliminating any space required for the load cells.

The TLCB can be flange mounted to any vertical machine surface or on top of horizontal surfaces utilizing the optional pillow block bracket.



GENERAL SPECIFICATIONS

Gage Resistance

350Ω nominal

Excitation Voltage

10VDC maximum

Output Signal

1.5 mV/V at rated force,
15 mVDC max.

Operating Temperature

-20°C to 80°C

Combined non-linearity and hysteresis

0.5% of full scale maximum

Temperature effect on zero

0.02% of rating per °C

Repeatability

0.2% of full scale maximum

Material

Beam: Nickel plated steel

Covers: Nickel plated aluminum

Overload Stops Engagement

105% to 150% of full load rating

Overload Protection

1000% of full load rating

Cable

MAGPOWR mating cable LCC series, or mating connector part #12B220-1

Climate Class

3K3 (EN60721)

Certifications

IP-54,

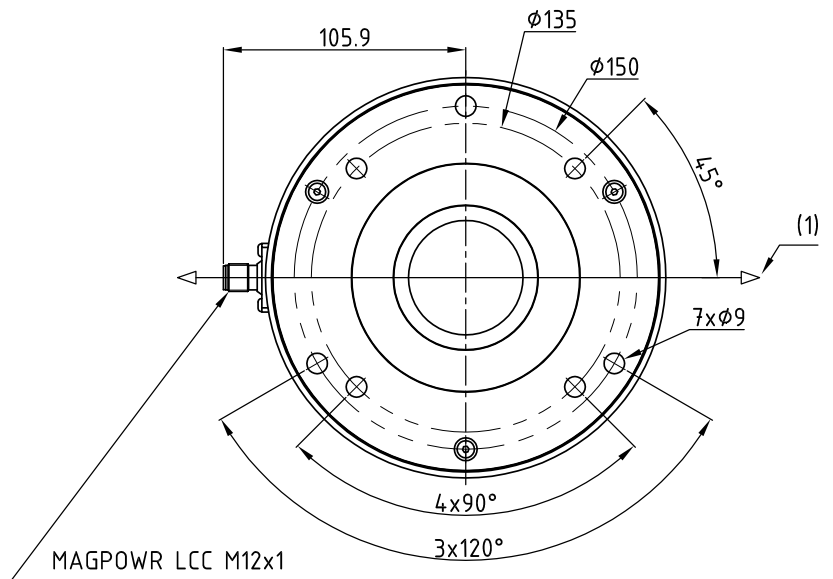
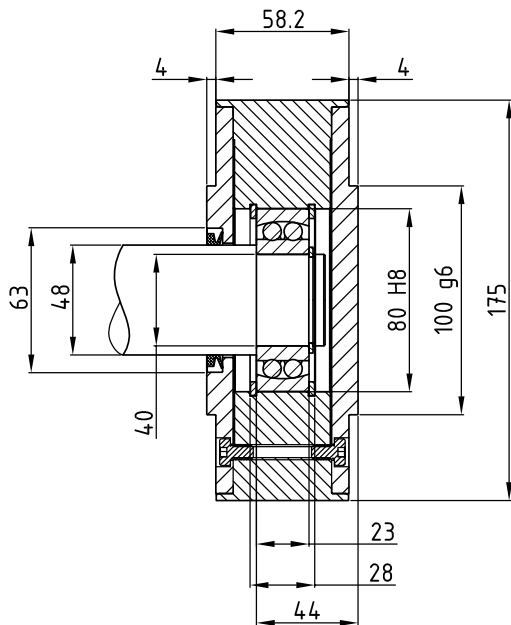
RoHS

KEY FEATURES

- Ruggedly constructed from steel for long life and dependability
- 10x mechanical overload protection
- Four load ratings from 500 to 3000N
- Full Wheatstone bridge design for measurement accuracy and low temperature drift
- Three or four hole bolt circle for mounting
- Flange mounting inside or outside of machine frame
- Additional mounting option with pillow block

DIMENSIONS

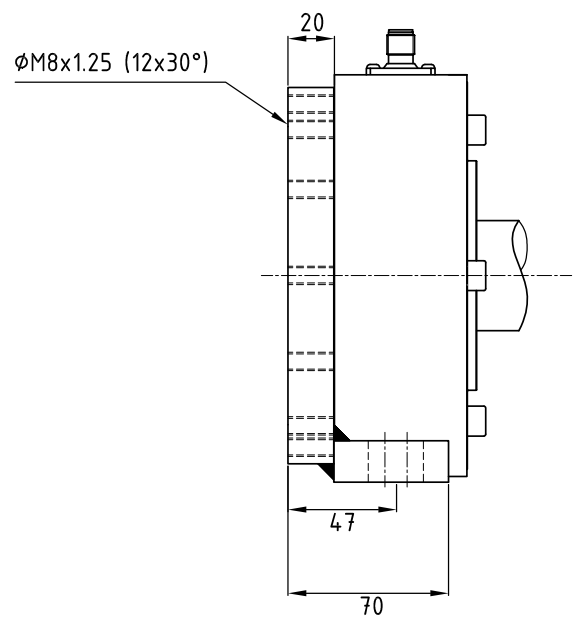
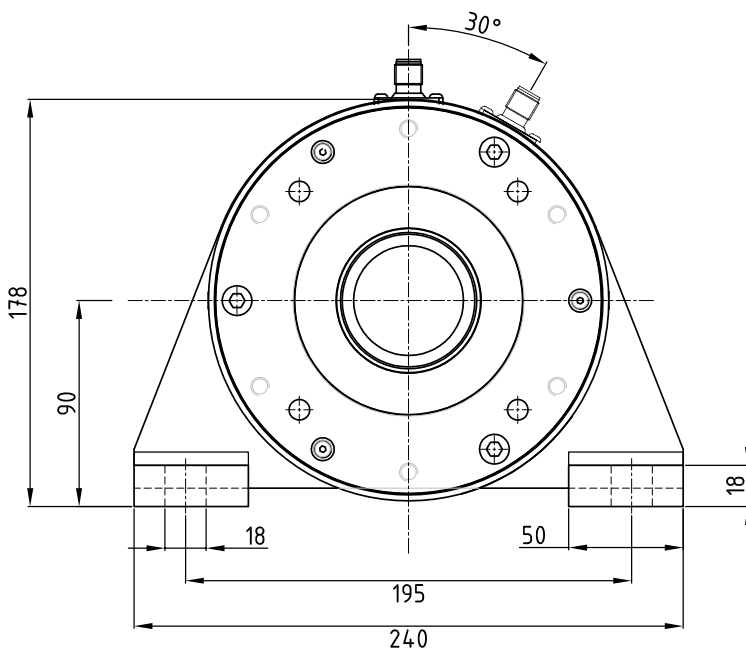
Dimensions in mm



1 Force can be measured toward connector or away from connector

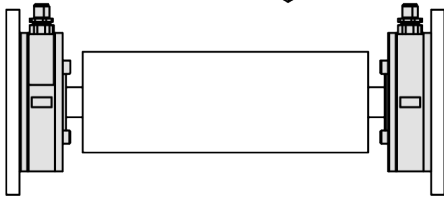
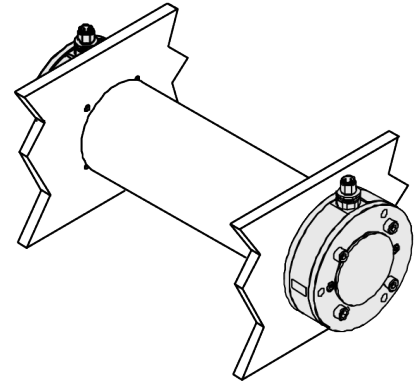
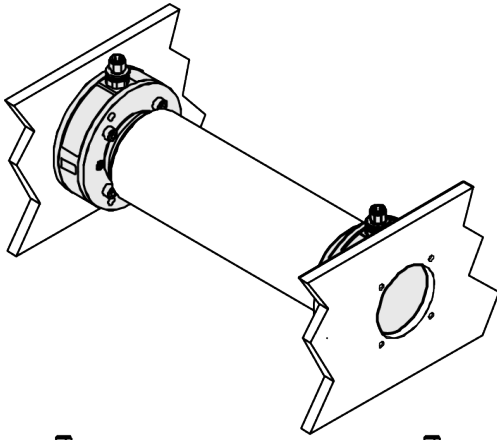
DIMENSIONS PILLOW BLOCK BRACKETS

TLCB load cell rotates in 30° steps
Dimensions in mm

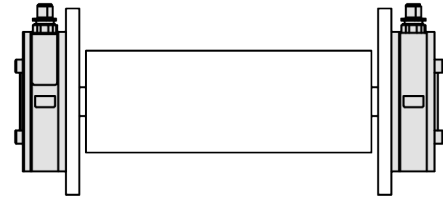


MOUNTING OPTIONS

Flange Mount on vertical machine frames

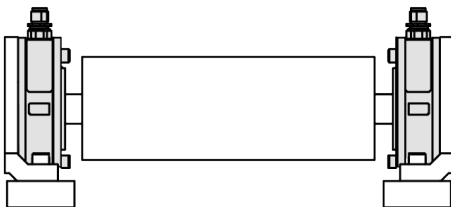
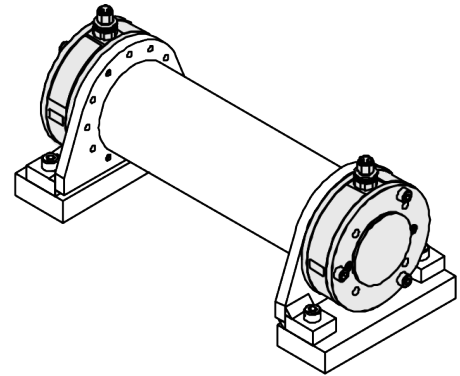
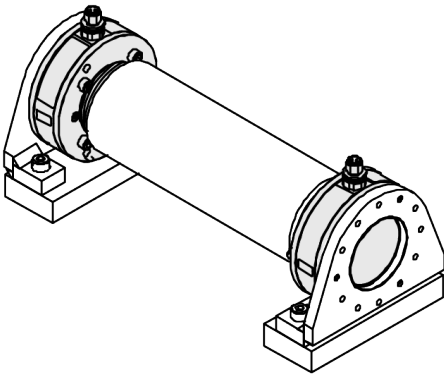


Inside frame

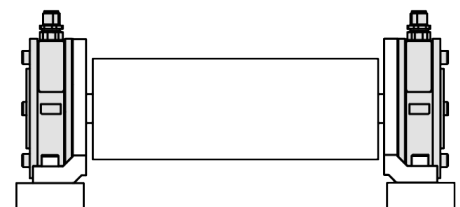


Outside frame

Pillow Block on horizontal machine frames



Inside brackets



Outside brackets

MAGPOWR TLCB THIN LOAD CELLS

MODEL NUMBER KEY



AVAILABLE MODELS

PART NUMBER	MODEL NUMBER	LOAD RATING [N]
M400437	TLCB-500-EC12M	500
M400122	TLCB-1000-EC12M	1000
M399482	TLCB-2000-EC12M	2000
M381443	TLCB-3000-EC12M	3000

OPTIONAL ACCESSORIES

- Self aligning bearings with 40 mm bore (one per load cell, M404505)
- Pillow block bracket for size B Load Cells (one per load cell, M404433)



EUROPE, MIDDLE EAST
AND AFRICA
Tel +49.6195.7002.0
Fax +49.6195.3018
sales@maxcess.eu
www.maxcess.eu

NORTH, CENTRAL
AND SOUTH AMERICA
Tel +1.405.755.1600
Fax +1.405.755.8425
sales@maxcessintl.com
www.maxcessintl.com

CHINA
Tel +86.756.881.9398
Fax +86.756.881.9393
info@maxcessintl.com.cn
www.maxcessintl.com.cn

JAPAN
Tel +81.43.421.1622
Fax +81.43.421.2895
japan@maxcessintl.com
www.maxcess.jp

INDIA
Tel +91.22.27602633
Fax +91.22.27602634
india@maxcessintl.com
www.maxcess.in

