

Web-Handling Solutions

Rotary Dies and Support Tooling, Guiding, Vision Systems,
Winding, Slitting, Tension Control and Precision Rolls

Our Experts Keep You Running Better, Faster and Smarter

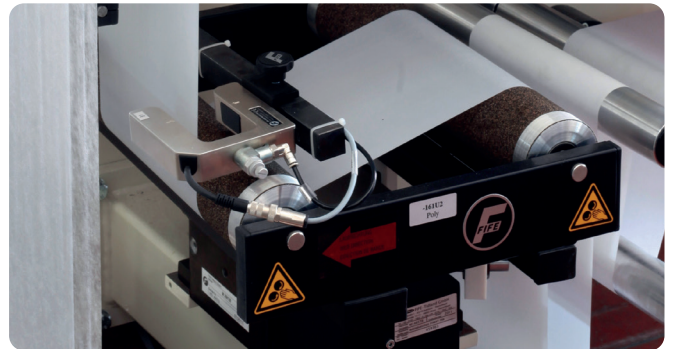
Expertise and Global Presence

Maxcess is a global leader in the manufacturing of industrial automation systems and components for handling a wide variety of web materials, e.g. paper, plastic, or non-woven.

Maxcess saves you time and money by optimizing and automating your converting line. We do this by leveraging our web handling brands, offering customized web handling solutions that help you work better, faster and smarter.

Maxcess customers appreciate the combination of over 80 years' experience, state-of-the-art technological know-how, the holistic approach and the wide product portfolio of renowned brands like Componex, Fife, MAGPOWR, RotoMetrics, Tidland, Valley Roller, and Webex. All to provide unmatched product integration, automation and precise positioning from unwind to rewind.

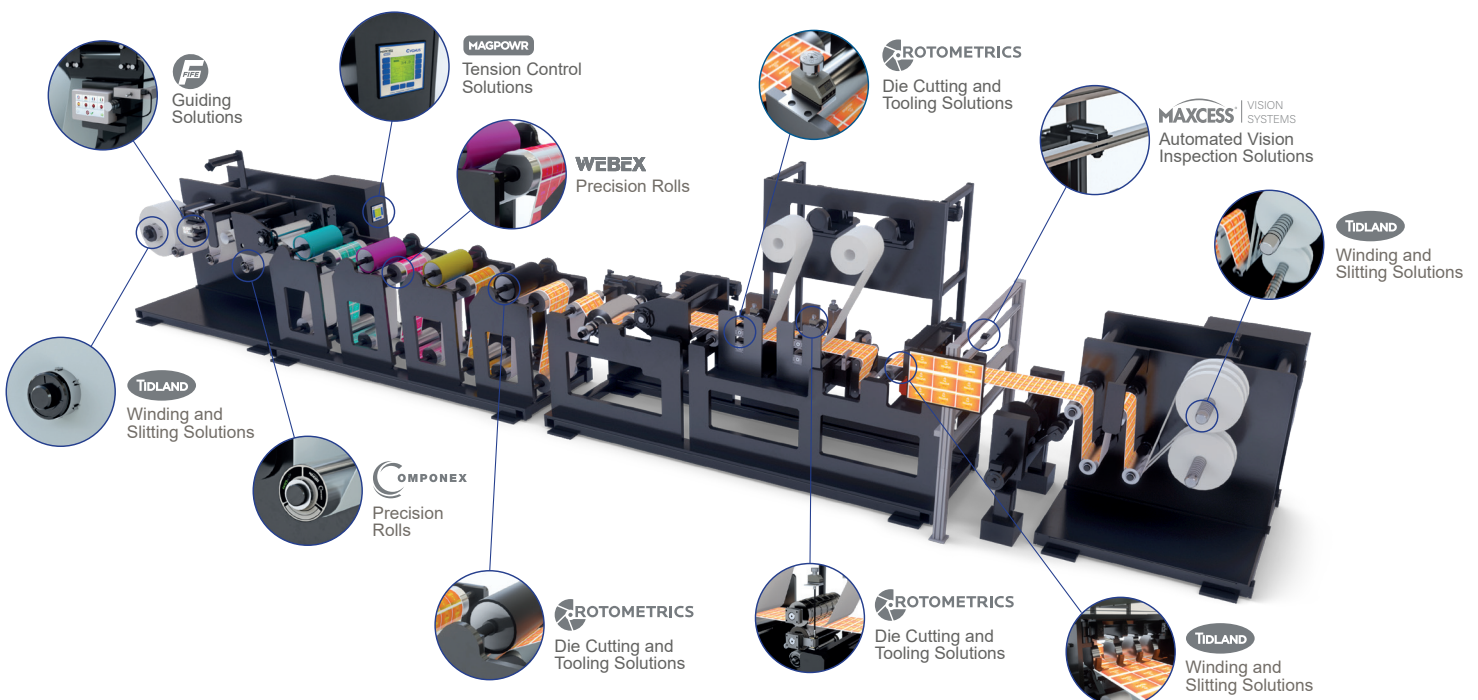
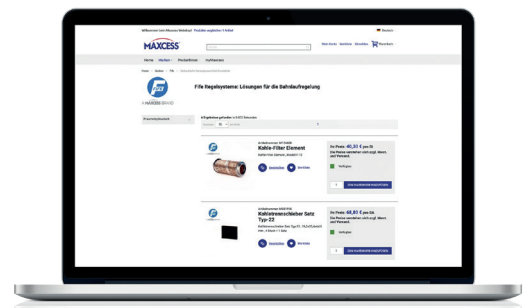
With 2200 staff and through its international locations and manufacturing sites plus its extended network of partners, Maxcess offers its customers sustainable distribution and service support in more than 90 countries worldwide.



Maxcess E-Commerce - 24/7

Our e-commerce platforms of MyMaxcess.eu and MyRoto.com bring you all of our industry-leading brands in an intuitive online portal.

With a few simple clicks you can view your account history, track your orders in real-time, review your invoices, re-order and online shop for our most-requested parts at your prices.

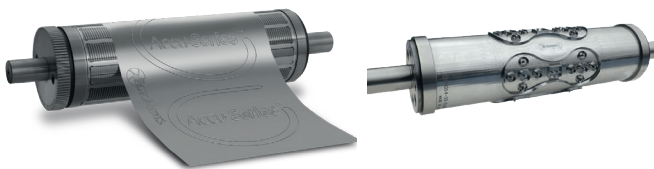




Unlock the Power of Precision.

Flexible and Solid Dies

Our **flexible and solid die** portfolio allows you to choose the product features that are most important to you. Every time. For many layouts, same day turnaround is available. Whether short run jobs, digital applications, abrasive materials, or thin film applications, we have a solution for all your die cutting requirements that works right out of the box.



Print Cylinders and Sleeves

Manufactured to exacting requirements and anodized in-house for consistency and increased life, our **print cylinders and sleeve portfolio** ensure the greatest accuracy and consistency. Our entry-level print sleeves are perfect for normal daily use and deliver reliable, maintenance-free performance. Our standard cylinders have the fastest turnaround times and offer maintenance-free performance at an affordable price. Our industry-leading **RotoGuard™** and **RotoGuard™ XT** cylinders have enhanced proprietary surface protection from scratches and corrosion.



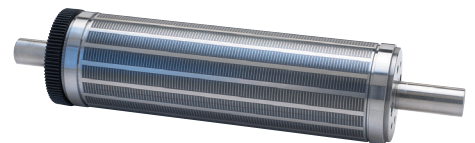
Anvils

Adjustable Anvils can be adjusted up/down in parallel or independently to change the cutting clearance. The infinite adjustability allows better control of the cut depth and allows the operator to easily adjust for any variability. Our new **AccuAdjust Dual Adjust** anvil unlocks tomorrow's automation today!



Magnetic Cylinders

True accuracy requires an integrated flexible die and a magnetic cylinder solution working as one. Our Magnetic Cylinder portfolio offers industry-leading price performance. Our **AccuBase™** magnetic cylinder or **AccuBase™ XT** with through-hardened D2 journals and bearers allow for increased durability. With industry-leading dimensional stability and the tightest tolerances, our Magnetic Cylinders offer increased accuracy and extended service life on every job.



Anti-Adhesive Coating

RotoRepel™ proprietary adhesive control coating also enhances overall press performance for operators, including:

- Industry-leading FDA-compliant formulation
- Reduced press downtime and higher output
- Easier die cleaning and storage
- Fewer missing labels and parts
- Reduction in blocking at rewind



Support Tooling

- Gears
- Specialty Flexible Dies for Folding Carton and Sheet-fed Applications
- Pressure Gauges
- Varitools

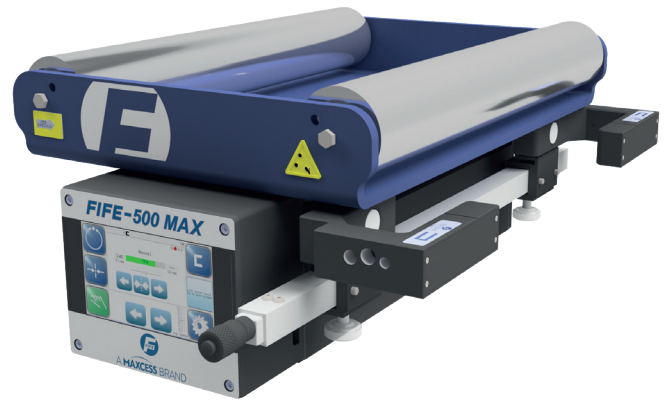
Advanced Guiding Systems and Components



Guiding

From the thinnest plastic film to the thickest steel strip, from the narrowest webs to the widest rolls, Fife delivers a full line of advanced guiding systems and products to reduce downtime and increase throughput.

Our latest web guiding system, the **FIFE-500 MAX**, gives you the latest networking capabilities in a compact enclosure, all at a competitive price point.



Advanced Sensor Technology

With our latest sensor technologies like the **DST-1 Object Recognition Sensor** and the series of various **digital sensors**, we give you powerful tools to properly guide your web. With our new wideband sensor, the **DSE-45**, you can guide multiple webs with one sensor, no positioners required!



Guiding

- Pre-wired, fully integrated Web Guiding Systems
- Web Guide Controllers optional with Embedded EtherNet and Profinet
- Power Units
- Sensors
- Actuators
- Positioners
- Offset Pivot Guides
- Steering Guides
- Unwind/Rewind Guides

High Performance Slitting and Winding Technology

Slitting

Tidland is the expert in slitting technology, offering advanced products and systems to fit virtually every application. From a single knifeholder to a fully automatic system, we deliver innovative slitting solutions designed to meet ever-increasing standards of quality, while helping you enter new, untapped markets.

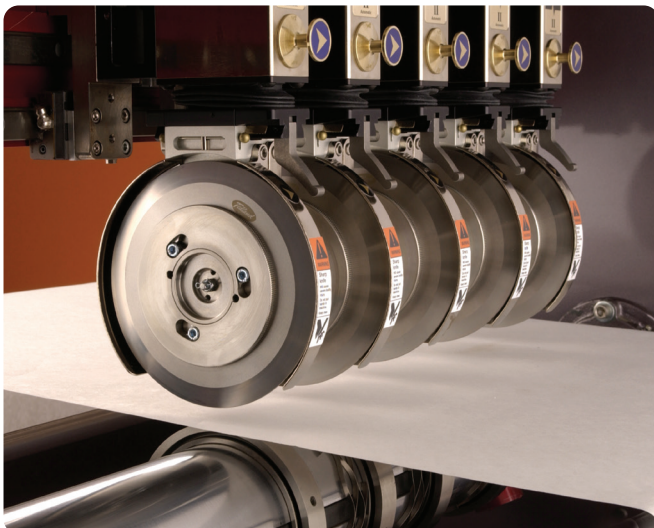
Slitting Products

- Electronic and Pneumatic Knifeholders
- Linked Slitting Accessories
- Manual and Motorized Slitter Positioning Systems
- Fully Automatic Slitter Systems
- Safety Options as 360° Blade and System Protection
- Dedicated Application System incl. Cross Product Functions (e.g. Sensor detected positioning, tension related slitting parameter, ...)



Winding

Our extensive line of shafts and chucks for unwind or rewind applications is unparalleled. And with more than 65 years of winding experience, our knowledge and expertise is unmatched.



Winding Products

- Core Shafts for unwind and rewind
- Great Expansion Shafts
- Pneumatic Brakes
- Pneumatic-mechanical and pneumatic chucks
- Crushed Core Restorers
- Industry 4.0 PressureMax Air Pressure
- Monitoring System

Find Defects Before They Become Costly



VisionMax and VisionConnect 100% Inspection

VisionMax helps your converting line run better, faster and smarter.

Better – no more returns and rework

Faster – reduce downtime and waste

Smarter – run faster while improving productivity through automated smart-converting

- Self-learning algorithms that automates setup
- Print and surface inspection from ONE system
- Easy-to-use software to store and recall jobs
- A wide variety of custom options

VisionConnect is an advanced workflow automation software suite, which allows operators to automatically control process lines and slitters to physically remove defects with as little waste as possible.



The Most Installed Tension Control Systems Worldwide

MAGPOWR

Tension Control

From our simplest sensor to our most advanced digital controls, MAGPOWR products are the result of hard-earned experience and unmatched application expertise. Our commitment to delivering the best possible control solution

for your application is a big reason why MAGPOWR has the largest installed base of tension control systems in the industry. Whether you're converting or printing, working with paper, film or wire, MAGPOWR provides the tools you need to get the job done right.



Products

- Load Cells
- Tension Controllers
- Tension Readouts
- Dancer Controllers
- Diameter-Based controllers
- Magnetic Particle Clutches and Brakes
- Pneumatic Brakes
- Permanent Magnet Brakes and Clutches
- Tension Sensing Idler Rolls

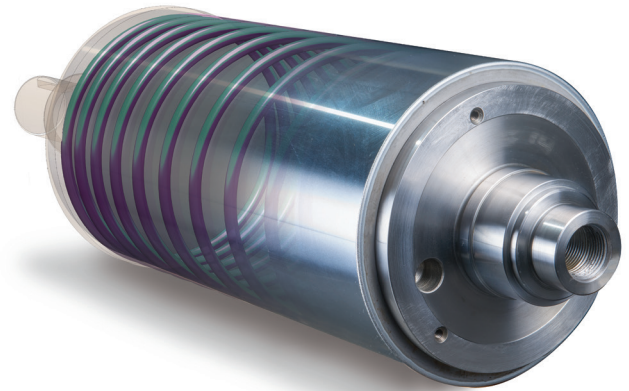
Wide Portfolio of Precision Rolls



Webex Heat Transfer and Vacuum Rolls

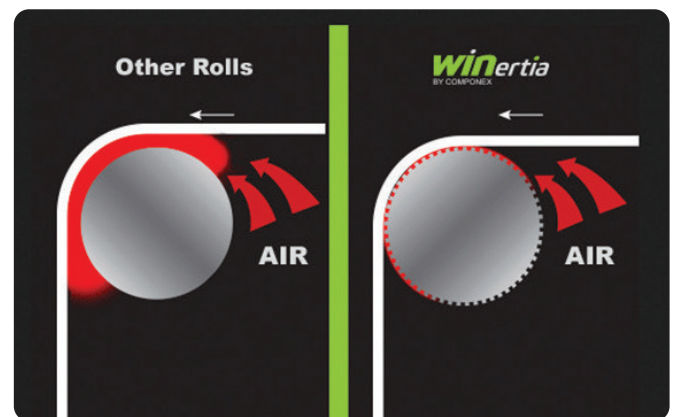
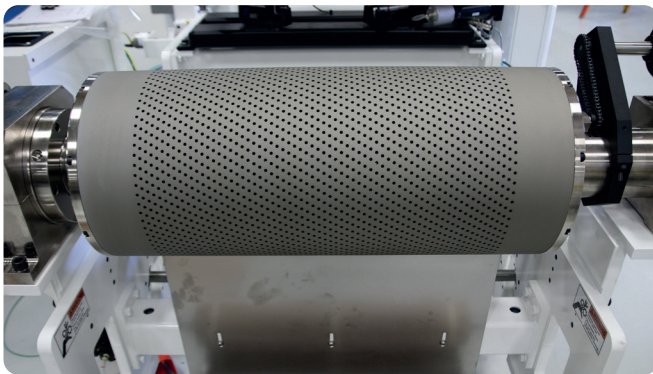
Webex has compiled a wide range of design options to manufacture the most efficient Heat Transfer and Chill Rolls. Our engineers evaluate roll size, internal geometry and fluid dynamics to develop the most precise roll for each application. In addition, we offer customized Vacuum rolls that offer:

- Vacuum zone angles configured to match the web wrap
- Adjustable vacuum zones for varying web widths
- Flame spray coatings for release and traction
- Clean room and cantilevered designs
- A wide variety of custom options



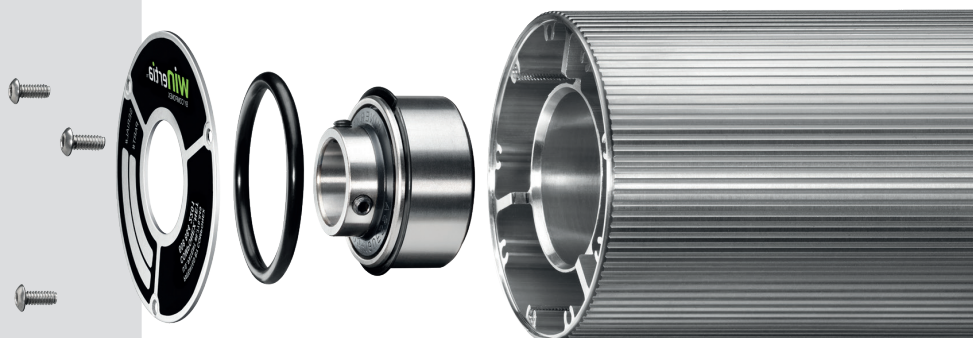
WINertia™ Idler Rolls by Componex. The fastest lead time in the industry

Componex Dead Shaft Idlers (smooth and air vent "AV") include built-in "air vents"- lateral grooves that remove trapped air. This maintains constant web traction at speeds up to 3400 FPM and prevents web scratching, slipping and sliding, allowing you to run up to 7.5 times faster.



Precision Roll Products

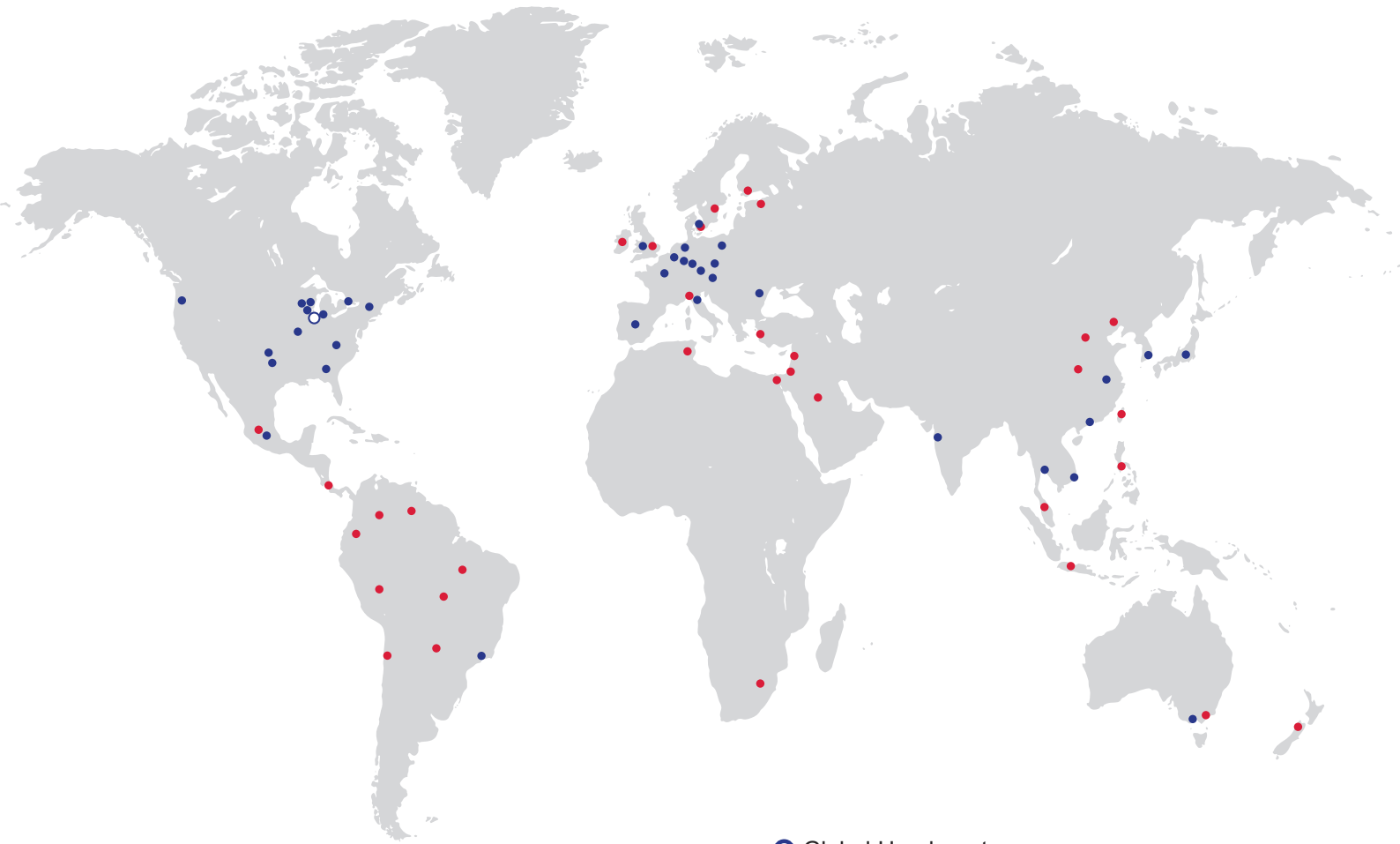
- Heat Transfer Rolls
- Vacuum Rolls
- Live Shaft and Dead Shaft Idler Rolls
- Bowed Rolls
- Carbon Fiber Rolls
- Custom Coatings



MAXCESS®

BETTER, FASTER, SMARTER

CONTACT US TODAY!



- Global Headquarters
- Manufacturing and Maxcess Representatives
- Sales and Service Agents

Global HQ & Americas

+1-844-MAXCESS

sales@maxcessintl.com

Maxcess Europe HQ
Fife-Tidland GmbH

+49-6195-7002-0
sales@maxcess.eu

Maxcess Germany
RotoMetrics Deutschland GmbH

+49 6134 7262 - 0
sales@rotometrics.de

Maxcess UK
RotoMetrics Intl. Ltd.

+44 1922 6100 00
uk.sales@maxcessintl.com

Web
maxcess.com

Shop
mymaxcess.eu
myroto.com

