



The SE-26B is a visible white LED light sensor that can be used to guide to the center of a line or an edge. The sensor is compact and easy to install.

This sensor is capable of operating reliably on smooth, rough, matt or shiny web surfaces. The SE-26B can be used in applications that have low color contrast between the background and the printed line. One of the key features of the Fife SE-26B sensor is its capability of detecting the edge of transparent plastic film.

Fife has a wide variety of sensor mounting brackets and positioning assemblies available for use with the SE-26B. The lens position may be altered to allow the sensor to operate at 90° from standard.

## GENERAL SPECIFICATIONS

### Supply Current

50 mA, +12 VDC  
40 mA, -12 VDC

### Temperature Range

Operating: -0° to 60°C  
Storage: -0° to 80°C

### Illumination

White LED

### Light Spot Size

1,2 x 4,2 mm

### Protection class

IP65

### Climate class

3K3 (EN60721)

### Relative Humidity

5% to 85%

### Pollution Degree

2 (IEC664-1)

### Sensor Output Range

Line guiding:  
-20 mA bis +20 mA  
Edge guiding:  
-20 mA bis +10 mA

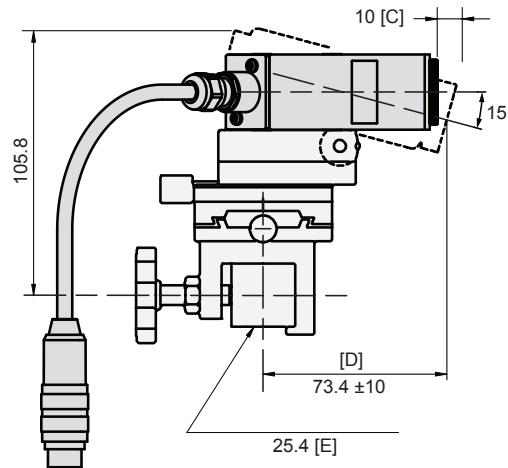
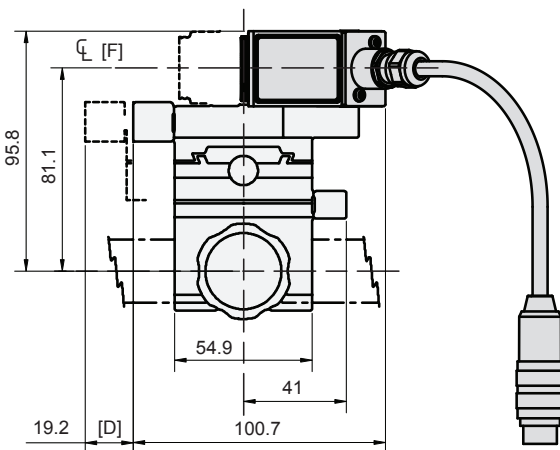
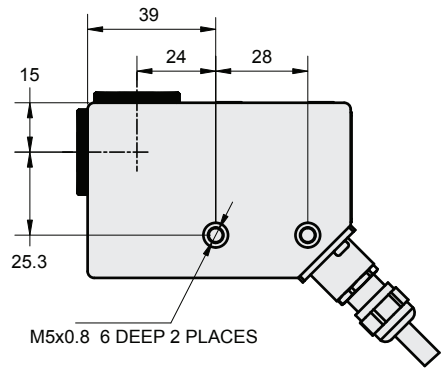
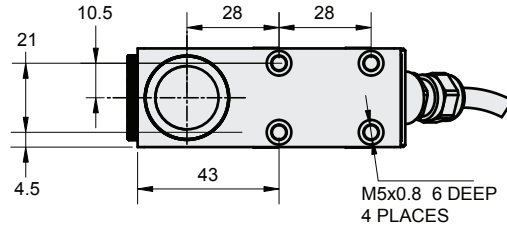
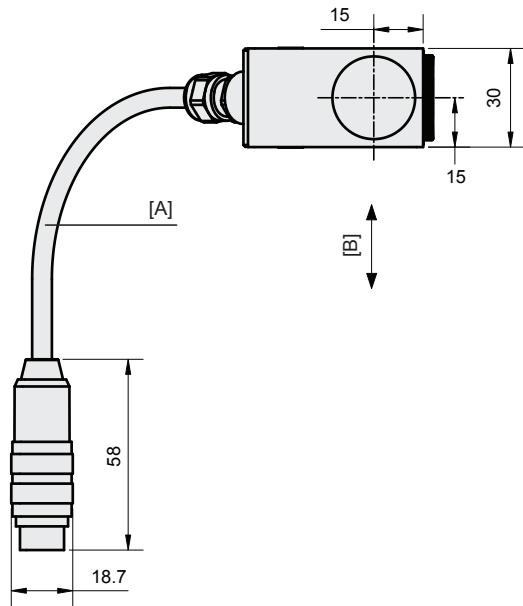
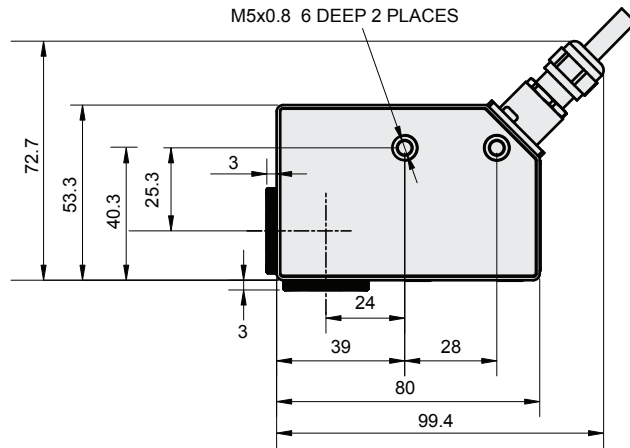
## KEY FEATURES

- Small, lightweight sensor for guiding to the center or edge of a line
- Especially good in applications where contrast between background and printed line is low
- Capable of detecting the edge of transparent plastic film
- Provides reliable operation for glossy, reflective, or shiny materials
- Lens position may be altered to allow the sensor to operate at 90° from standard
- Electrostatic discharge protected
- LED light source provides 100,000 lifetime hours

# FIFE SE-26B LINE GUIDE SENSOR

## DIMENSIONS

- A Cable length plus connector about 300mm
- B Material travel
- C Optimal focal length
- D Travel adjustment
- E Square bar
- F Lens



Dimensions in mm.



EUROPE, MIDDLE EAST  
AND AFRICA  
Tel +49.6195.7002.0  
sales@maxcess.eu  
www.maxcess.eu

NORTH, CENTRAL  
AND SOUTH AMERICA  
Tel +1.405.755.1600  
sales@maxcessintl.com  
www.maxcessintl.com

CHINA  
Tel +86.756.881.9398  
info@maxcessintl.com.cn  
www.maxcessintl.com.cn

JAPAN  
Tel +81.43.421.1622  
japan@maxcessintl.com  
www.maxcess.jp

INDIA  
Tel +91.22.27602633  
india@maxcessintl.com  
www.maxcess.in

